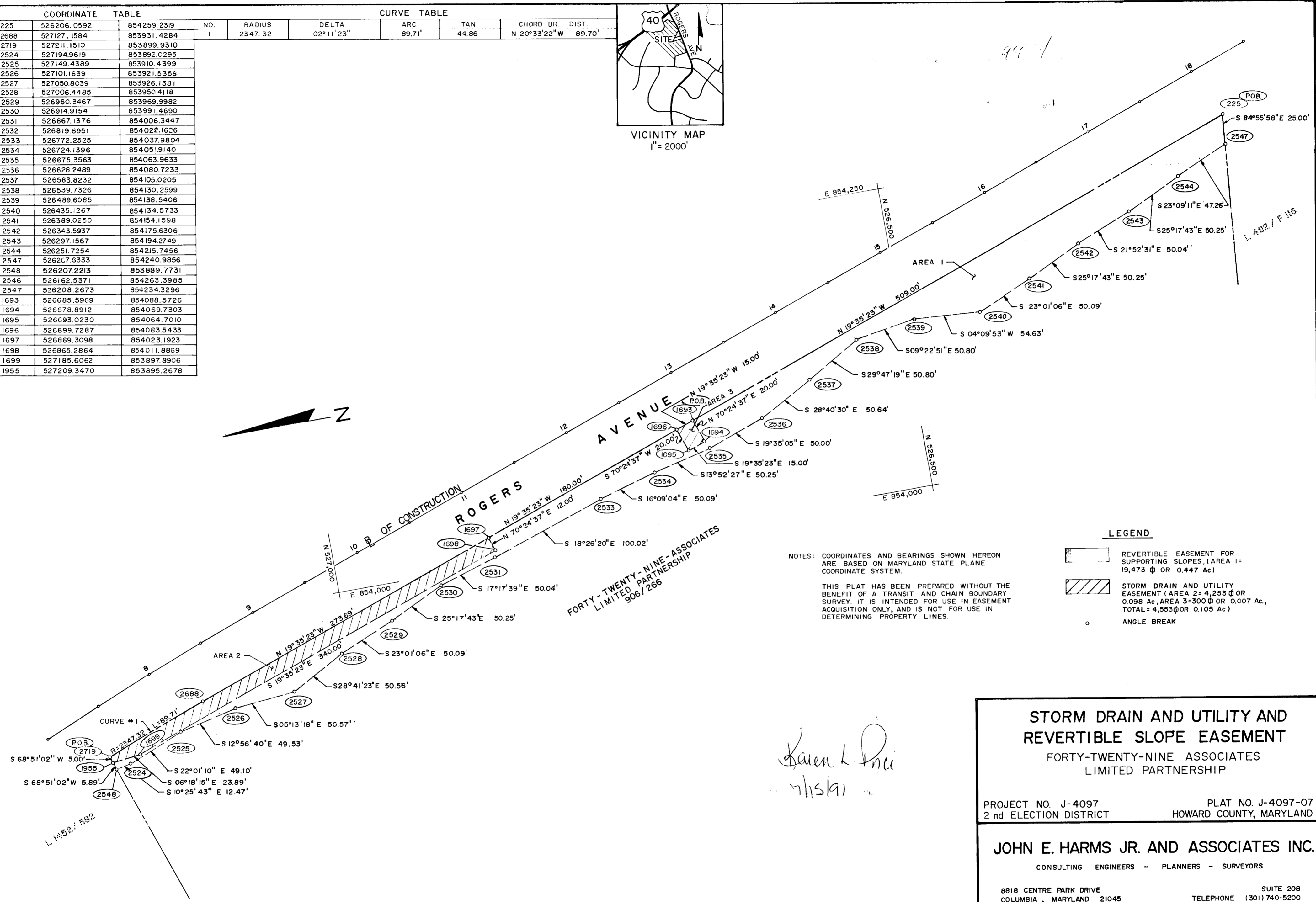
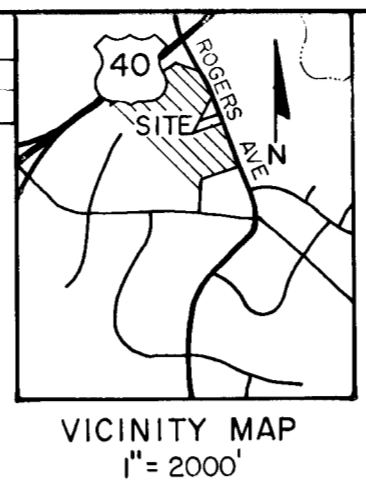


COORDINATE TABLE			CURVE TABLE				
NO.	RADIUS	DELTA	ARC	TAN	CHORD BR.	DIST.	
225	526206.0592	854259.2319					
2688	527127.1584	853931.4284					
2719	527211.1510	853899.9310					
2524	527194.9619	853892.0295					
2525	527149.4389	853910.4399					
2526	527101.1639	853921.5358					
2527	527050.8039	853926.1381					
2528	527006.4485	853950.4118					
2529	526960.3467	853969.9982					
2530	526914.9154	853991.4690					
2531	526867.1376	854006.3447					
2532	526819.6951	854022.1626					
2533	526772.2525	854037.9804					
2534	526724.1396	854051.9140					
2535	526675.3563	854063.9633					
2536	526628.2489	854080.7233					
2537	526583.8232	854105.0205					
2538	526539.7326	854130.2599					
2539	526489.6085	854139.5406					
2540	526435.1267	854134.5733					
2541	526389.0250	854154.1598					
2542	526343.5937	854175.6306					
2543	526297.1567	854194.2749					
2544	526251.7254	854215.7456					
2547	526207.6333	854240.9856					
2548	526207.2213	853889.7731					
2546	526162.5371	854263.3985					
2547	526208.2673	854234.3296					
1693	526685.5969	854088.5726					
1694	526678.8912	854069.7303					
1695	526693.0230	854064.7010					
1696	526699.7287	854083.5433					
1697	526869.3098	854023.1923					
1698	526865.2864	854011.8869					
1699	527185.6062	853897.8906					
1955	527209.3470	853895.2678					



NOTES: COORDINATES AND BEARINGS SHOWN HEREON ARE BASED ON MARYLAND STATE PLANE COORDINATE SYSTEM.

THIS PLAT HAS BEEN PREPARED WITHOUT THE BENEFIT OF A TRANSIT AND CHAIN BOUNDARY SURVEY. IT IS INTENDED FOR USE IN EASEMENT ACQUISITION ONLY, AND IS NOT FOR USE IN DETERMINING PROPERTY LINES.

	REVERTIBLE EASEMENT FOR SUPPORTING SLOPES (AREA 1 = 19,473 sq ft OR 0.447 Ac)
	STORM DRAIN AND UTILITY EASEMENT (AREA 2 = 4,253 sq ft OR 0.098 Ac, AREA 3 = 300 sq ft OR 0.007 Ac, TOTAL = 4,553 sq ft OR 0.105 Ac)
	ANGLE BREAK

Karen L. Price
mlsksl

STORM DRAIN AND UTILITY AND REVERTIBLE SLOPE EASEMENT
 FORTY-TWENTY-NINE ASSOCIATES LIMITED PARTNERSHIP

PROJECT NO. J-4097 PLAT NO. J-4097-07
 2nd ELECTION DISTRICT HOWARD COUNTY, MARYLAND

JOHN E. HARMS JR. AND ASSOCIATES INC.
 CONSULTING ENGINEERS - PLANNERS - SURVEYORS

8818 CENTRE PARK DRIVE SUITE 208
 COLUMBIA, MARYLAND 21045 TELEPHONE (301) 740-5200

APPROVED: LAND ACQUISITION <i>D. P. Kelly</i> DATE	NO. REVISION BY DATE	COMPUTED BY: M.D.M. DRAWN BY: D.G.H. CHECKED BY: W.H.N. DATE: 2/11/91 SCALE: 1" = 50'	SHEET OF
APPROVED: BUREAU OF ENGINEERING <i>Elizabeth Anderson Palcia</i> 5/11/91 DATE			