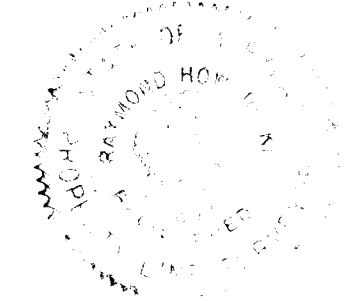
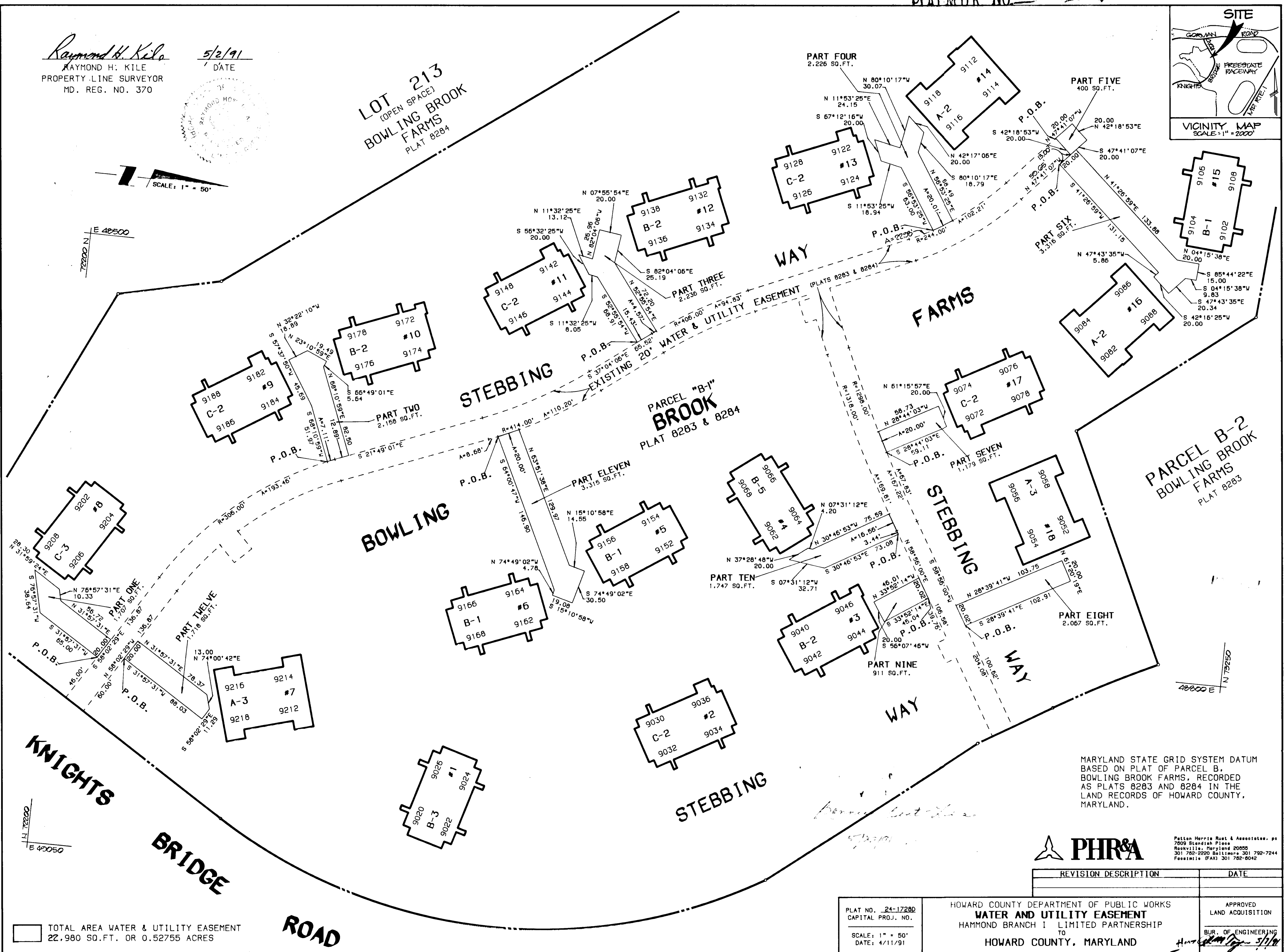
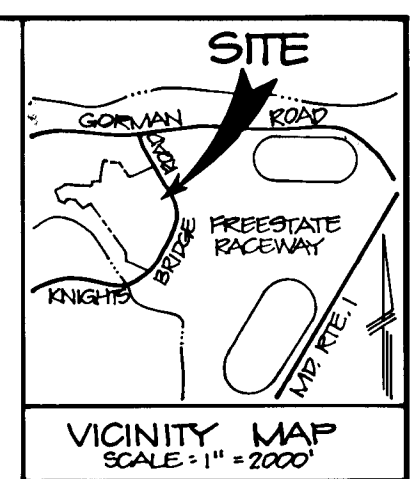


Raymond H. Kile  
 RAYMOND H. KILE  
 PROPERTY LINE SURVEYOR  
 MD. REG. NO. 370

5/2/91  
 DATE



LOT 213  
 (OPEN SPACE)  
 BOWLING BROOK  
 FARMS  
 PLAT 8284



MARYLAND STATE GRID SYSTEM DATUM  
 BASED ON PLAT OF PARCEL B,  
 BOWLING BROOK FARMS, RECORDED  
 AS PLATS 8283 AND 8284 IN THE  
 LAND RECORDS OF HOWARD COUNTY,  
 MARYLAND.

**PHR&A**  
 Patten Morris Rust & Associates, PC  
 7609 Stoddard Place  
 Rockville, Maryland 20855  
 301-782-2220 Baltimore 301-792-7244  
 Fossomite (FAX) 301-782-8042

REVISION DESCRIPTION	DATE

PLAT NO. 24-17280  
 CAPITAL PROJ. NO.  
 SCALE: 1" = 50'  
 DATE: 4/11/91

HOWARD COUNTY DEPARTMENT OF PUBLIC WORKS  
**WATER AND UTILITY EASEMENT**  
 HAMMOND BRANCH I LIMITED PARTNERSHIP  
 TO  
 HOWARD COUNTY, MARYLAND

APPROVED  
 LAND ACQUISITION  
 BUR. OF ENGINEERING  
 5/1/91

TOTAL AREA WATER & UTILITY EASEMENT  
 22,980 SQ.FT. OR 0.52755 ACRES