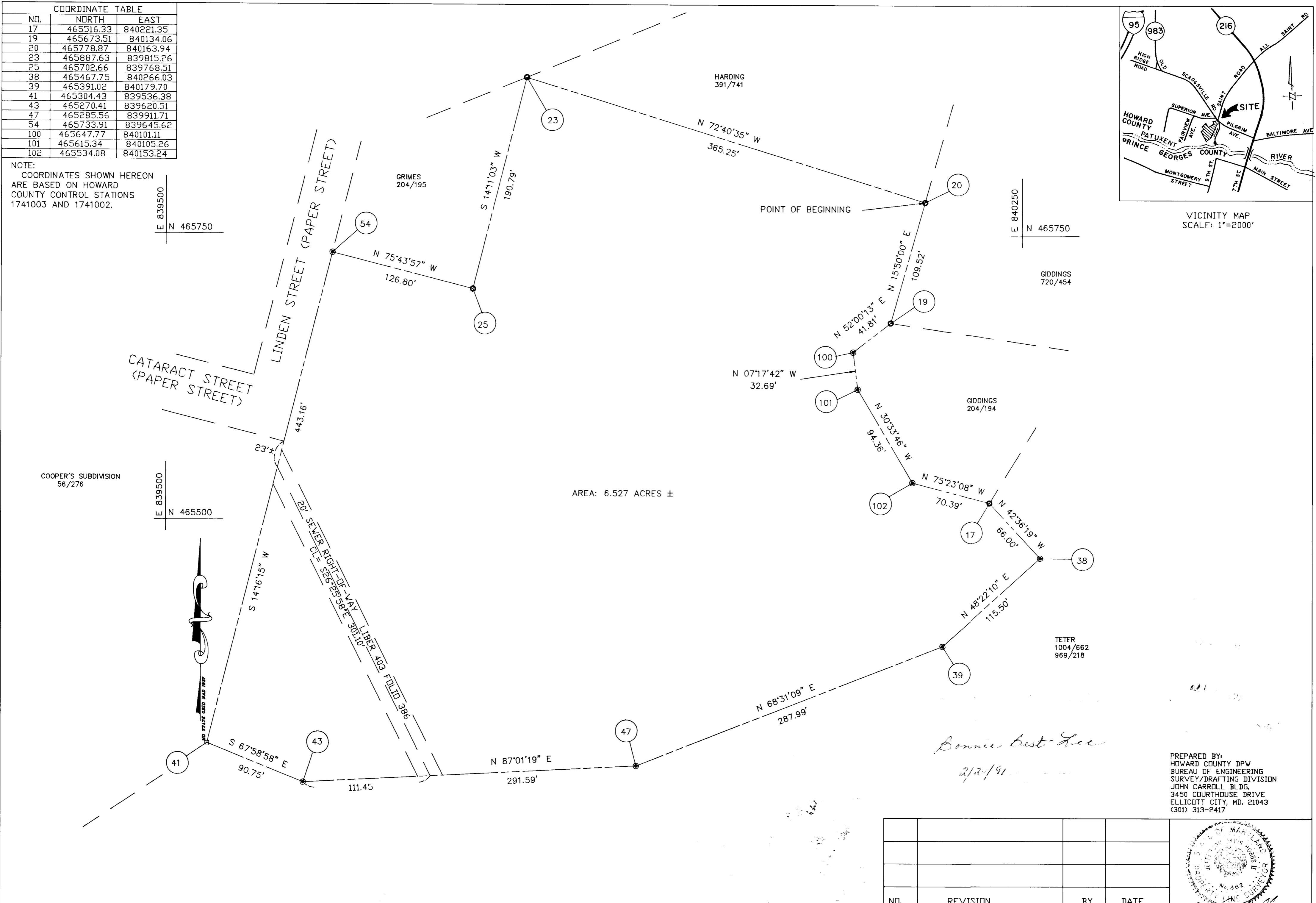
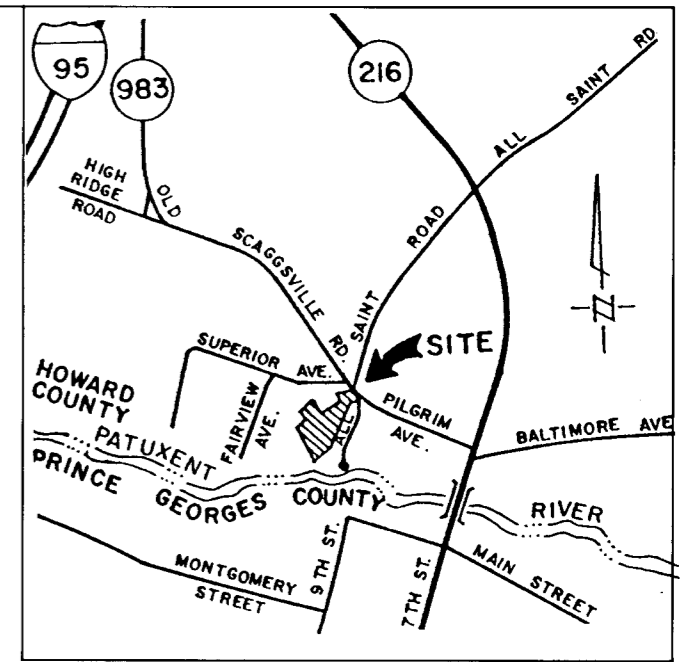


COORDINATE TABLE		
NO.	NORTH	EAST
17	465516.33	840221.35
19	465673.51	840134.06
20	465778.87	840163.94
23	465887.63	839815.26
25	465702.66	839768.51
38	465467.75	840266.03
39	465391.02	840179.70
41	465304.43	839536.38
43	465270.41	839620.51
47	465285.56	839911.71
54	465733.91	839645.62
100	465647.77	840101.11
101	465615.34	840105.26
102	465534.08	840153.24

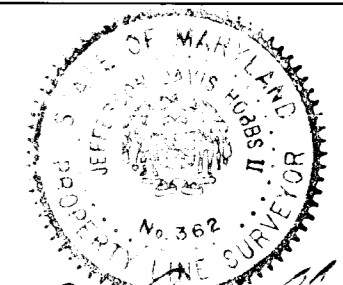
NOTE:
 COORDINATES SHOWN HEREON
 ARE BASED ON HOWARD
 COUNTY CONTROL STATIONS
 1741003 AND 1741002.



AREA: 6.527 ACRES ±

Bonnie Best-Gee
 2/23/91

PREPARED BY:
 HOWARD COUNTY DPW
 BUREAU OF ENGINEERING
 SURVEY/DRAFTING DIVISION
 JOHN CARROLL BLDG.
 3450 COURTHOUSE DRIVE
 ELLICOTT CITY, MD. 21043
 (301) 313-2417



NO.	REVISION	BY	DATE

APPROVED:
William E. Ryan
 BUREAU OF ENGINEERING
 DATE: 1-23-91
Jefferson D. Hobbs II
 REAL ESTATE SERVICES
 DATE: 1/23/91

PLAT NUMBER: N-3005-2
 CAP. PROJECT NO.: N-3005
 SCALE: 1"=50'
 DATE: DEC. 3, 1990
 COMPUTED BY: AMB
 DRAWN BY: CAD
 CHECKED BY: JDH

HOWARD COUNTY DEPARTMENT OF PUBLIC WORKS
FEE SIMPLE ACQUISITION
 FROM
HELEN E. GIDDINGS
 6TH. ELECTION DISTRICT HOWARD COUNTY, MD. TAX MAP 50 PARCEL 97