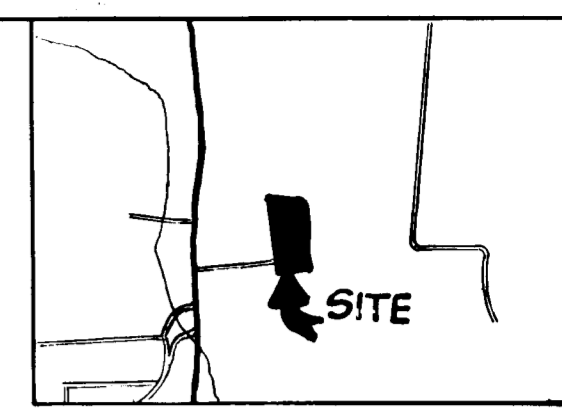


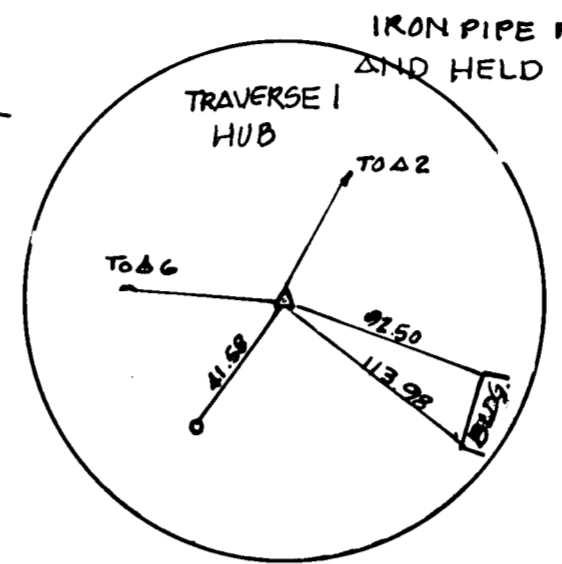
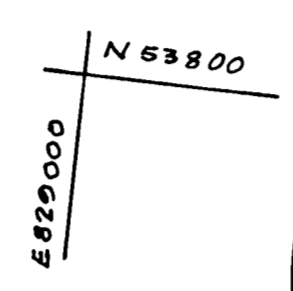
STATE DEPT. OF ASSESSMENTS & TAXATION
 HOWARD COUNTY
B. J. Lee
 DATE: 9/15/89 PLAT:

LARRY REALTY CO.
 LIBER 424 FOLIO 206

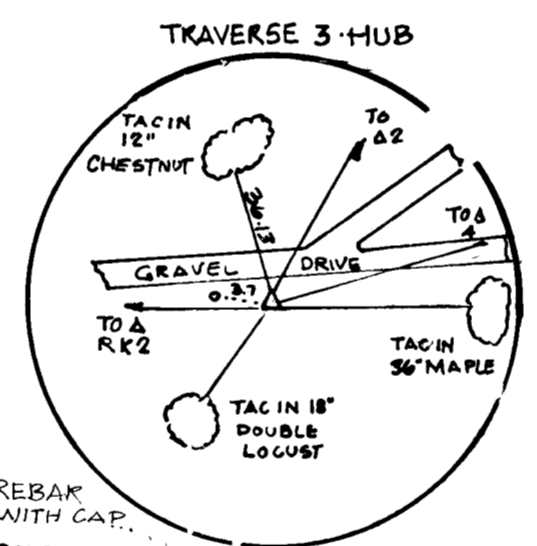
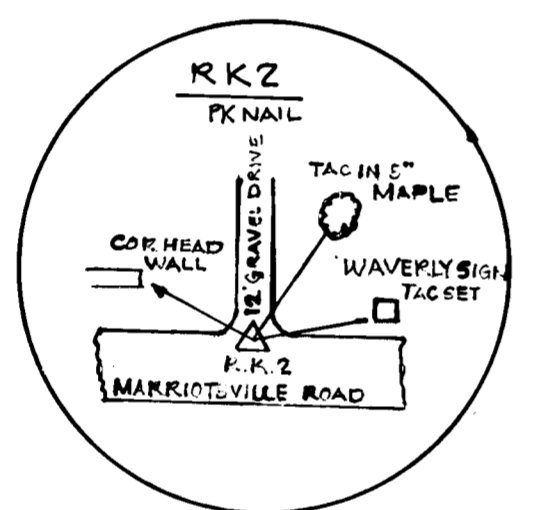
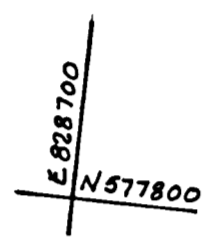


COORDINATE TABLE		
NO.	NORTH	EAST
①	538033.95	829535.62
②	537534.96	829523.27
③	537541.94	829223.71
④	538041.60	829235.83
⑤	537574.58	829112.36
⑥	537591.06	828588.68
⑦	537550.99	828587.02
⑧	537594.43	829109.74

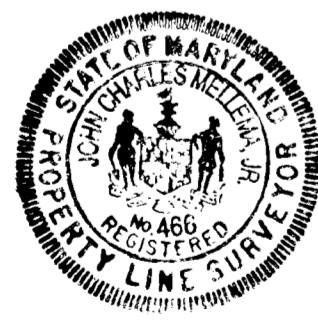
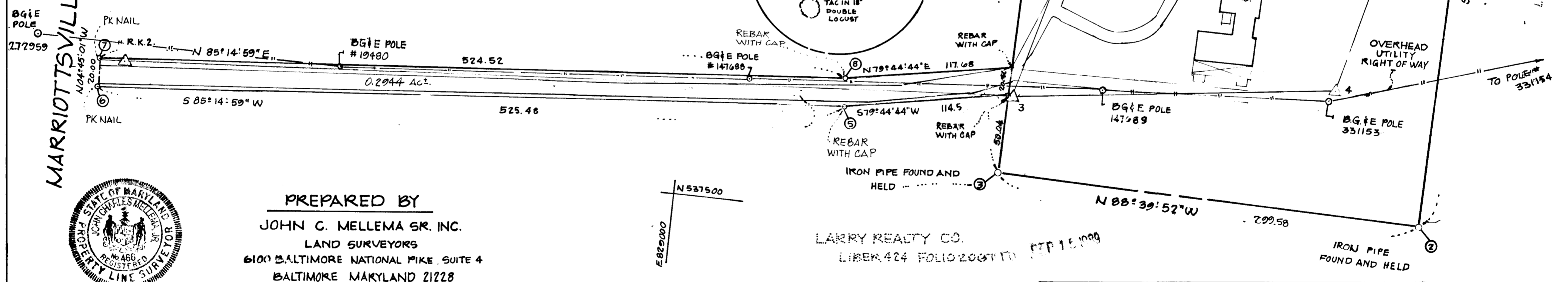
TRAVERSE'S COORDINATE		
NO.	NORTH	EAST
1	538062.22	829271.84
2	537916.20	829313.41
3	537594.72	829228.80
4	537623.38	829454.86
5	537885.41	829493.95
6	538023.94	829471.31
R.K.2	537549.95	828606.83



LARRY REALTY CO.
 LIBER 424 FOLIO 206



MARRIOTTSVILLE ROAD



PREPARED BY
JOHN C. MELLEMA SR. INC.
 LAND SURVEYORS
 6100 BALTIMORE NATIONAL PIKE, SUITE 4
 BALTIMORE, MARYLAND 21228
 (701) 744-8880

LARRY REALTY CO.
 LIBER 424 FOLIO 206

COMPUTED BY: J.M.JR
 DRAWN BY: J.M.G
 CHECKED BY: J.C.M. SR.

LEGEND	REVISIONS
○ = UTILITY POLE	
△ = TRAVERSE STATION	
□ = STONE DRIVE	

APPROVED: BUREAU OF ENGINEERING
William S. [Signature] 9-11-89
 CHIEF - BUREAU OF ENGINEERING DATE

APPROVED: LAND ACQUISITION
[Signature] 9-15-89
 CHIEF - LAND ACQUISITION DATE

HOWARD COUNTY, MARYLAND
 DEPARTMENT OF PUBLIC WORKS
FEE SIMPLE ACQUISITION

"THE SOCIETY FOR THE PRESERVATION OF MARYLAND ANTIQUITIES, INC."
 PROJECT NO: C-0217
 DATE: 9-8-89
 SCALE: 1" = 50'
 SHEET 1 OF 1
 PLAT NO: C-0217-1