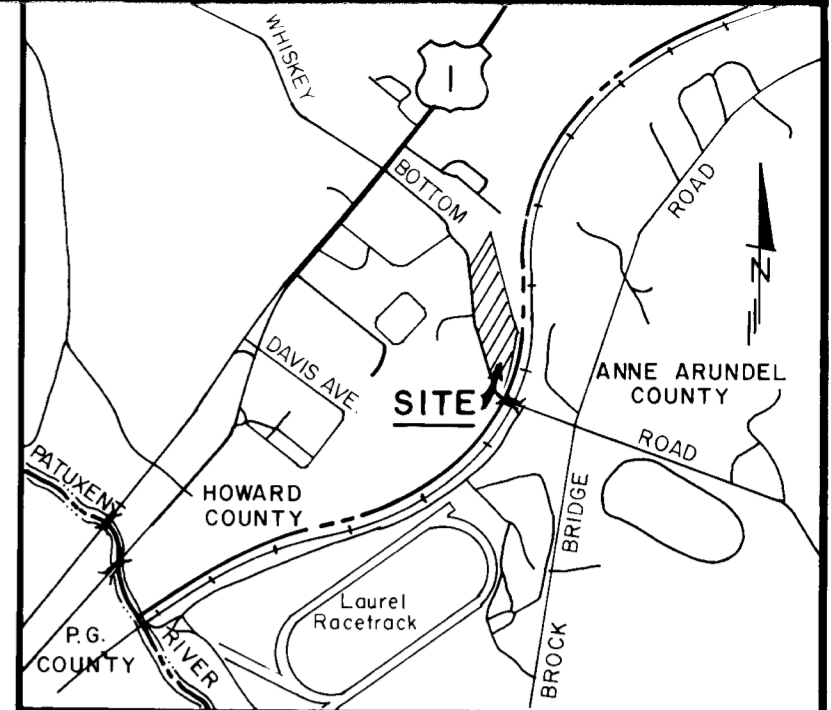
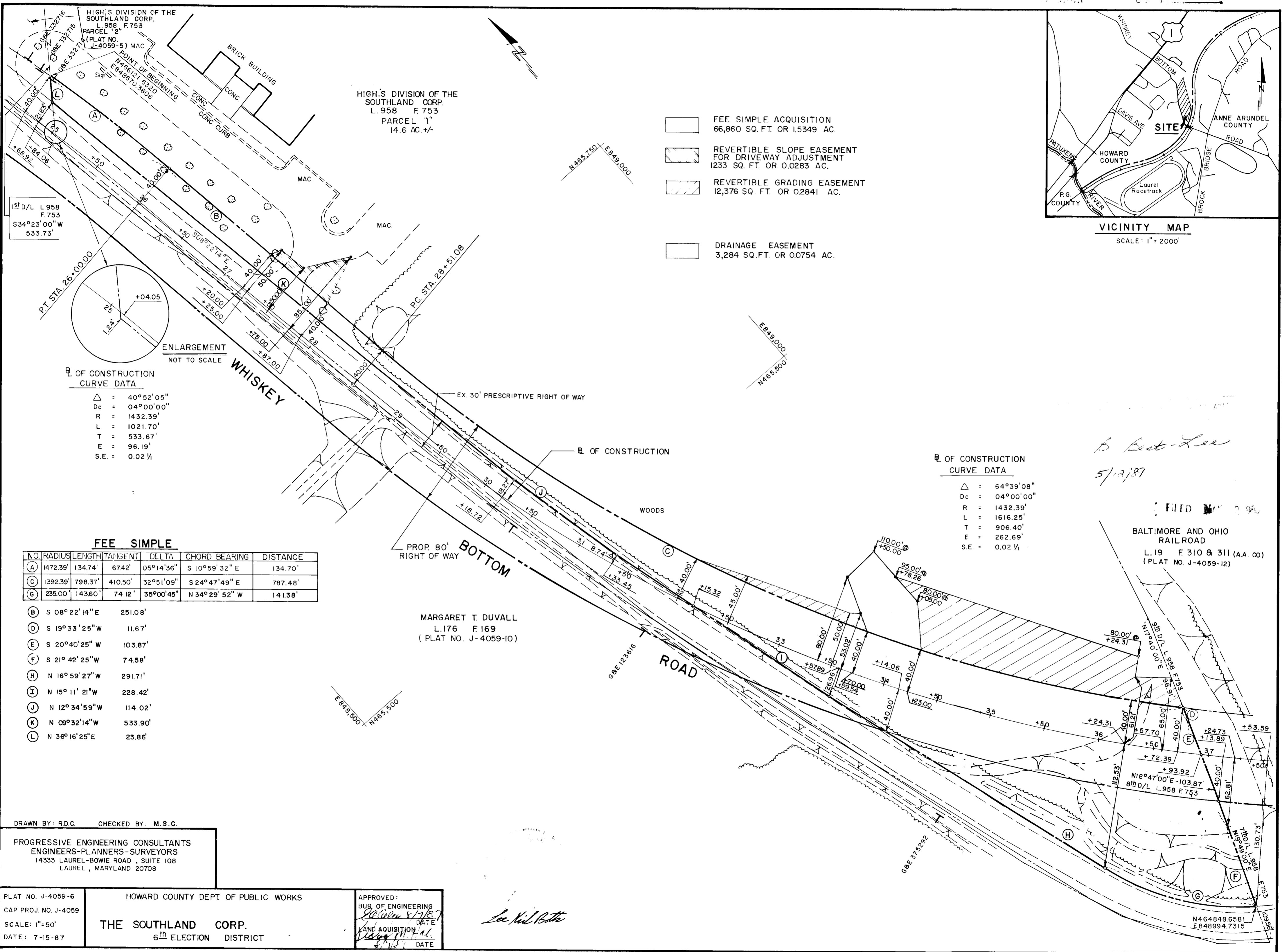


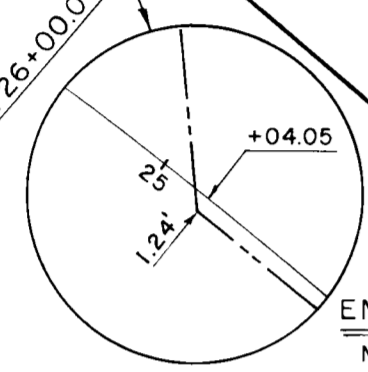
PATCH 8572



VICINITY MAP
SCALE: 1" = 2000'

- FEE SIMPLE ACQUISITION
66,860 SQ. FT. OR 1.5349 AC.
- REVERTIBLE SLOPE EASEMENT
FOR DRIVEWAY ADJUSTMENT
1233 SQ. FT. OR 0.0283 AC.
- REVERTIBLE GRADING EASEMENT
12,376 SQ. FT. OR 0.2841 AC.
- DRAINAGE EASEMENT
3,284 SQ. FT. OR 0.0754 AC.

1st D/L L 958
F 753
S34°23'00"W
533.73'



ENLARGEMENT
NOT TO SCALE

E OF CONSTRUCTION
CURVE DATA

- Δ = 40°52'05"
- Dc = 04°00'00"
- R = 1432.39'
- L = 1021.70'
- T = 533.67'
- E = 96.19'
- S.E. = 0.02 1/4

B. Best-Lee
5/12/87

E OF CONSTRUCTION
CURVE DATA

- Δ = 64°39'08"
- Dc = 04°00'00"
- R = 1432.39'
- L = 1616.25'
- T = 906.40'
- E = 262.69'
- S.E. = 0.02 1/4

FILED MAY 2 1987
BALTIMORE AND OHIO
RAILROAD
L.19 F.310 & 311 (AA CO.)
(PLAT NO. J-4059-12)

FEE SIMPLE

NO.	RADIUS	LENGTH	TANGENT	DELTA	CHORD BEARING	DISTANCE
(A)	1472.39'	134.74'	67.42'	05°14'36"	S 10°59'32" E	134.70'
(C)	1392.39'	798.37'	410.50'	32°51'09"	S 24°47'49" E	787.48'
(G)	235.00'	1436.0'	74.12'	35°00'45"	N 34°29'52" W	141.38'

- (B) S 08°22'14" E 251.08'
- (D) S 19°33'25" W 116.7'
- (E) S 20°40'25" W 103.87'
- (F) S 21°42'25" W 74.58'
- (H) N 16°59'27" W 291.71'
- (I) N 15°11'21" W 228.42'
- (J) N 12°34'59" W 114.02'
- (K) N 09°32'14" W 533.90'
- (L) N 36°16'25" E 23.86'

MARGARET T. DUVAL
L.176 F.169
(PLAT NO. J-4059-10)

DRAWN BY: R.D.C. CHECKED BY: M.S.G.

PROGRESSIVE ENGINEERING CONSULTANTS
ENGINEERS-PLANNERS-SURVEYORS
14333 LAUREL-BOWIE ROAD, SUITE 108
LAUREL, MARYLAND 20708

PLAT NO. J-4059-6
CAP PROJ. NO. J-4059
SCALE: 1"=50'
DATE: 7-15-87

HOWARD COUNTY DEPT. OF PUBLIC WORKS

THE SOUTHLAND CORP.
6th ELECTION DISTRICT

APPROVED:
BUB. OF ENGINEERING
[Signature]
DATE
LAND ACQUISITION
[Signature]
DATE

See Kil Botta

N464848.6581
E848994.7315