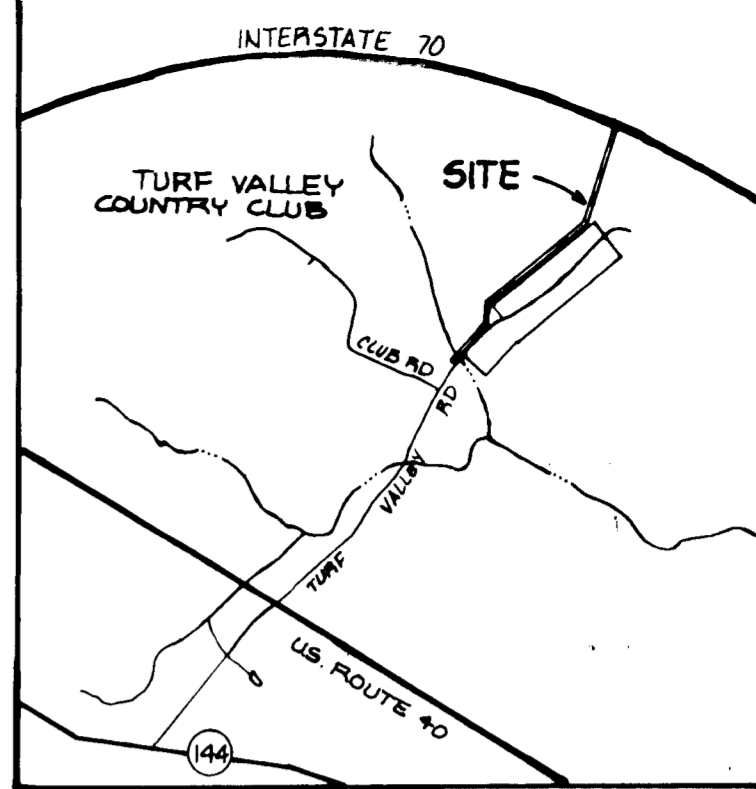
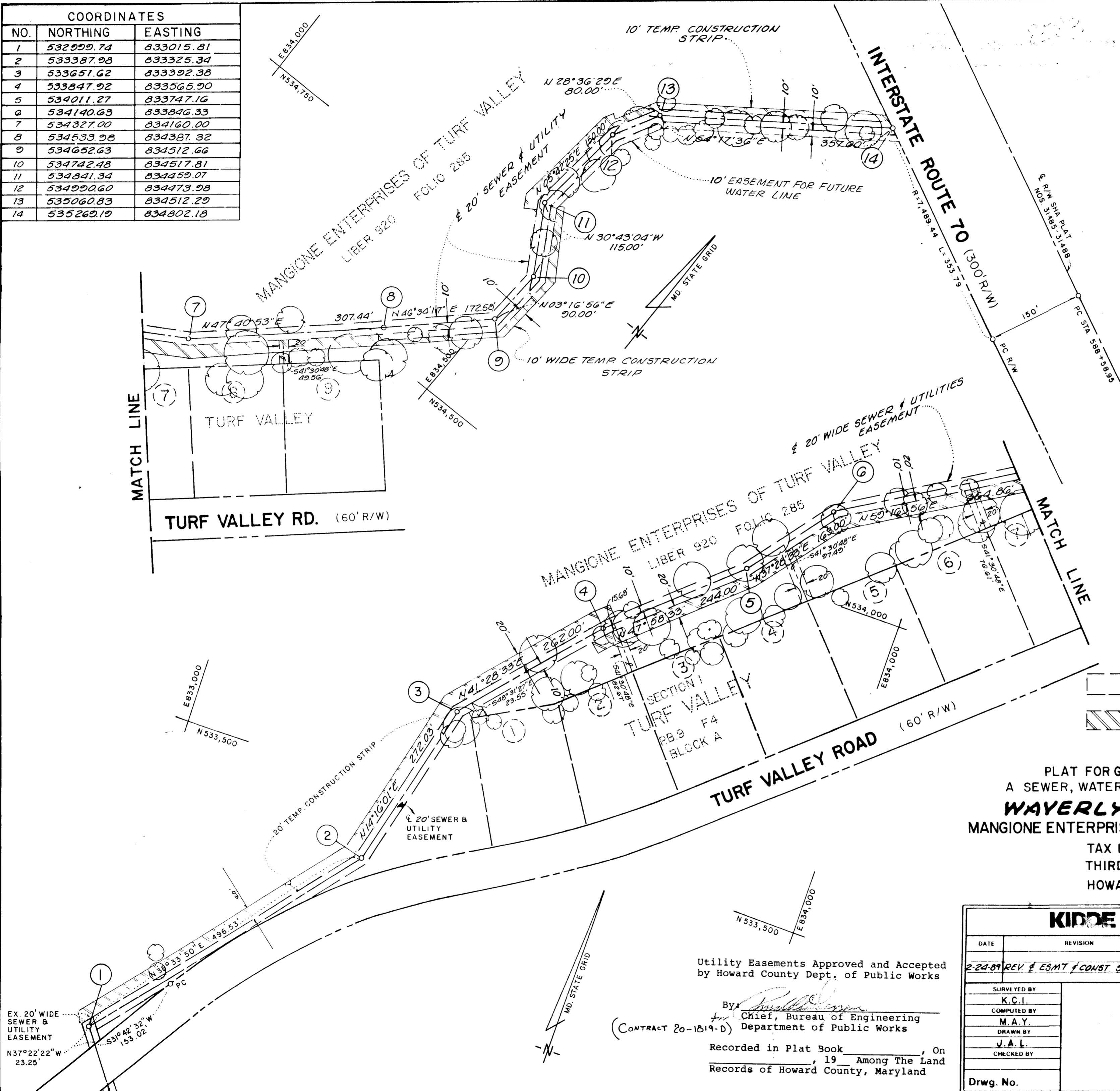


COORDINATES		
NO.	NORTHING	EASTING
1	532999.74	833015.81
2	533387.98	833325.34
3	533651.62	833392.38
4	533847.92	833565.90
5	534011.27	833747.16
6	534140.63	833846.33
7	534327.00	834160.00
8	534533.98	834387.32
9	534652.63	834512.66
10	534742.48	834517.81
11	534841.34	834459.07
12	534990.60	834473.98
13	535060.83	834512.29
14	535269.19	834802.18



VICINITY MAP  
SCALE: 1" = 2000'

This plat and the coordinates shown hereon are based upon Howard County, geodetic control traverses which is based upon the Maryland State Plane Coordinate System.

SEWER, WATER & UTILITY EASEMENT AREA: 74,970<sup>sq</sup> ft OR 1.721 AC.  
 TEMPORARY CONSTRUCTION STRIP AREA: 58,733<sup>sq</sup> ft OR 1.348 AC.

PLAT FOR GRANT OF EASEMENTS FOR  
 A SEWER, WATER MAIN AND APPURTENANCES  
**WAYERLY INTERCEPTOR**  
 MANGIONE ENTERPRISES OF TURF VALLEY (OWNERS)  
 TAX MAP 16, PARCEL 226  
 THIRD ELECTION DISTRICT  
 HOWARD COUNTY, MARYLAND

EX. 20' WIDE SEWER & UTILITY EASEMENT  
 N37°22'22"W 23.25'

Utility Easements Approved and Accepted by Howard County Dept. of Public Works  
 By: *[Signature]*  
 Chief, Bureau of Engineering  
 Department of Public Works  
 (CONTRACT 20-1519-D)  
 Recorded in Plat Book \_\_\_\_\_, On \_\_\_\_\_, 19\_\_\_\_ Among The Land Records of Howard County, Maryland

KIDDE CONSULTANTS, INC.		
DATE	REVISION	BY
2-24-89	REV. E. ESMT & CONST. STRIP	J.A.L.
SURVEYED BY	ENGINEERS • PLANNERS • SURVEYORS	
K.C.I.	1100 WEST STREET / SUITE 100 / LAUREL, MD 20707	
COMPUTED BY	(Wash.) (301) 953-1821 / 792-8086 (Balt.)	
M.A.Y.	<i>[Signature]</i>	
DRAWN BY		
J.A.L.		
CHECKED BY	DATE <b>FEB., 89</b> SCALE 1" = 100'	
Drwg. No.		