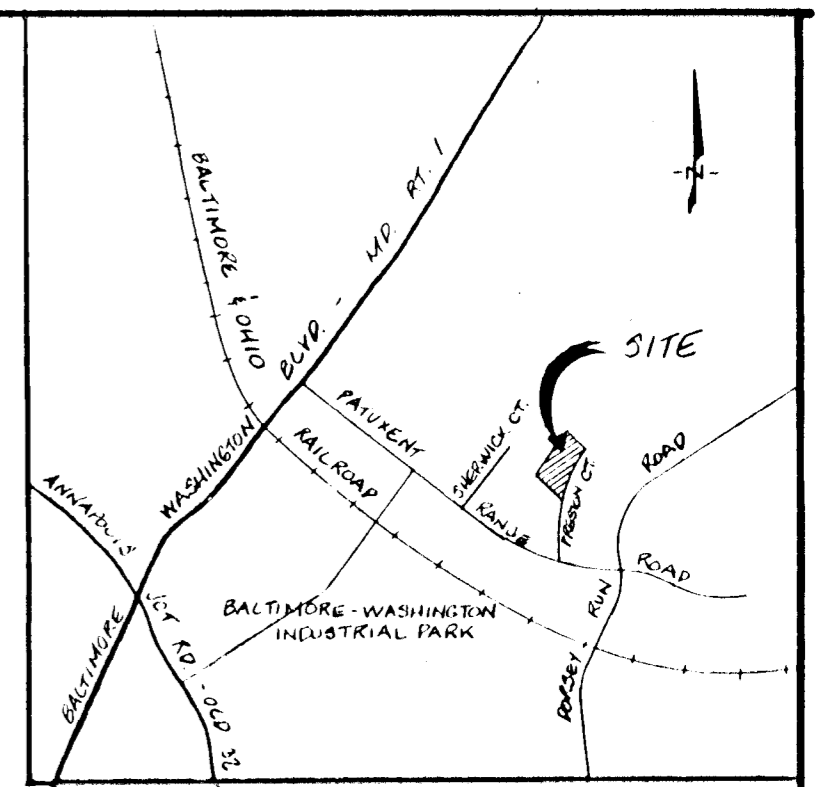
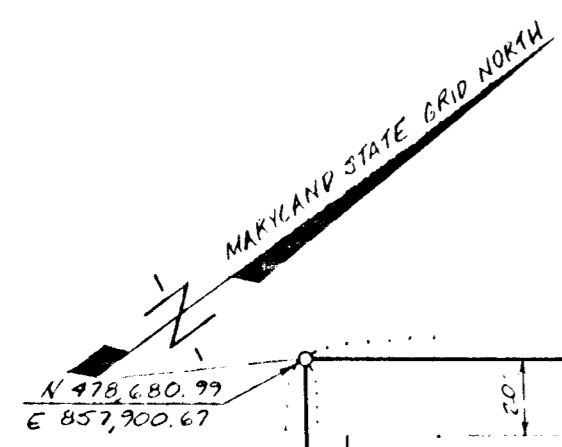


6449
 THIS PLAT AND THE COORDINATES SHOWN HEREON ARE BASED UPON HOWARD COUNTY GEODETIC CONTROL TRAVERSE WHICH IS BASED UPON THE MARYLAND STATE PLANE COORDINATE SYSTEM.

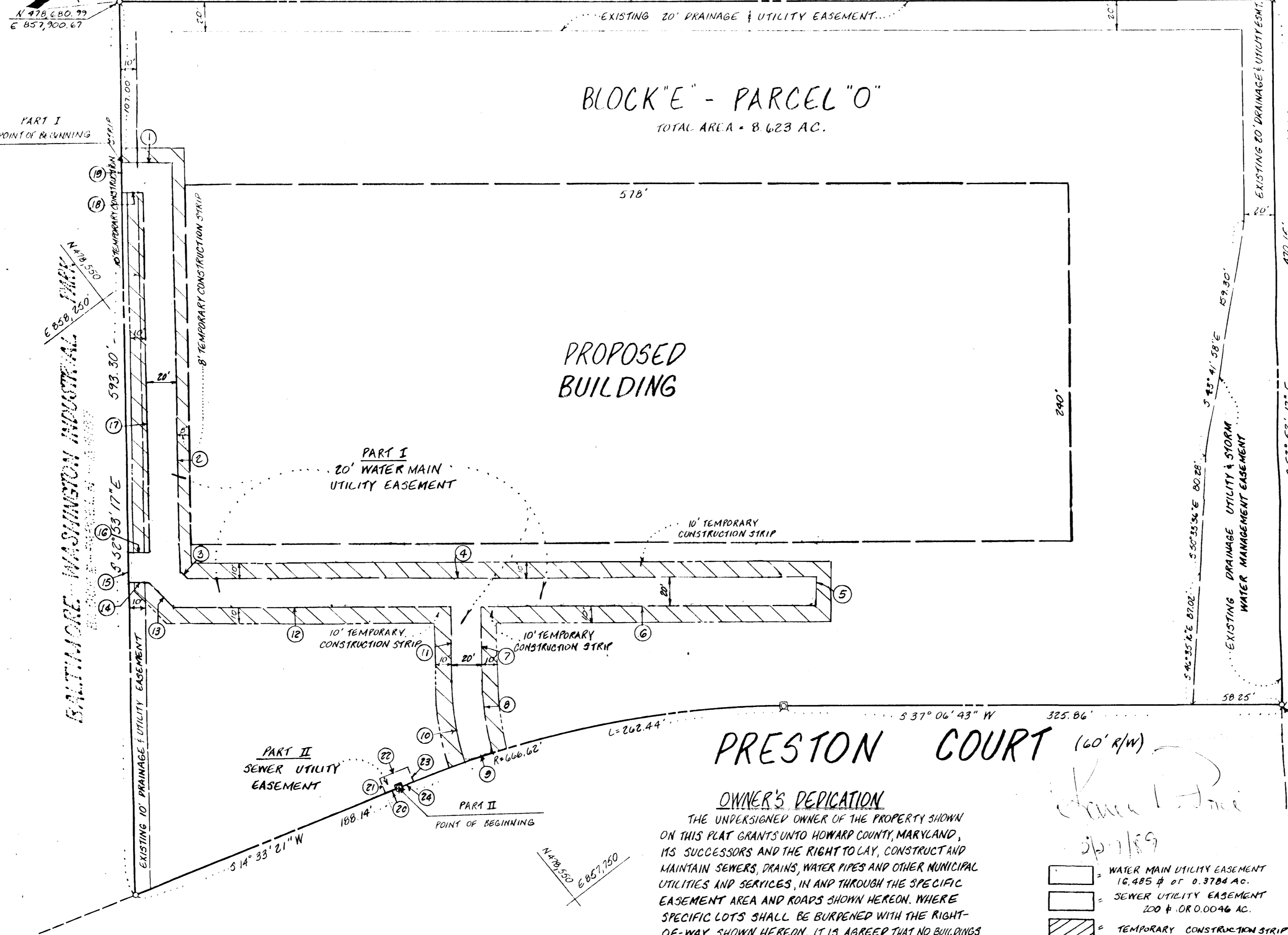
BALTIMORE-WASHINGTON INDUSTRIAL PARK

BLOCK "E" PARCEL "O" - PLAT 25 - FOLIO 25 N 37° 06' 43" E 755.34' PARCEL "O" - PLAT 25 - FOLIO 25



VICINITY MAP
 SCALE: 1" = 2000'

BLOCK "E" - PARCEL "O"
 TOTAL AREA = 8.623 AC.



WATER MAIN UTILITY EASEMENT LEGEND	
No.	Bearing & Distance
1	N 37° 06' 43" E 33.00'
2	S 52° 53' 17" E 271.72'
3	N 82° 06' 43" E 8.89'
4	N 37° 06' 43" E 409.72'
5	S 52° 53' 17" E 20.00'
6	S 37° 06' 43" W 220.00'
7	S 52° 53' 17" E 52.00'
8	R=185.00 L=36.61 CH=358°32'21"E 36.55'
9	R=666.62 L=20.06 CH=520°58'17"W 20.06'
10	R=205.00 L=42.25 CH=N58°47'32"W 42.17'
11	N 52° 53' 17" W 52.00'
12	S 37° 06' 43" W 178.00'
13	S 82° 06' 43" W 25.46'
14	S 37° 06' 43" W 13.00'
15	N 52° 53' 17" W 20.00'
16	N 37° 06' 43" E 13.00'
17	N 52° 53' 17" W 240.00'
18	S 37° 06' 43" W 13.00'
19	N 52° 53' 17" W 20.00'

PRESTON COURT (60' R/W)

OWNER'S DEDICATION

THE UNDERSIGNED OWNER OF THE PROPERTY SHOWN ON THIS PLAT GRANTS UNTO HOWARD COUNTY, MARYLAND, ITS SUCCESSORS AND THE RIGHT TO LAY, CONSTRUCT AND MAINTAIN SEWERS, DRAINS, WATER PIPES AND OTHER MUNICIPAL UTILITIES AND SERVICES, IN AND THROUGH THE SPECIFIC EASEMENT AREA AND ROADS SHOWN HEREON. WHERE SPECIFIC LOTS SHALL BE BURDENED WITH THE RIGHT-OF-WAY SHOWN HEREON, IT IS AGREED THAT NO BUILDINGS OR SIMILAR STRUCTURES OF ANY KIND SHALL BE ERRECTED IN, ON OR OVER THE SAID RIGHT-OF-WAY BY THE GRANTOR, ITS SUCCESSORS AND ASSIGNS, OR BY HOWARD COUNTY, MARYLAND.

BY: Neal Ruchman Partner
 WITNESS: Richard Jones
 DATE: _____

- WATER MAIN UTILITY EASEMENT 16,485 # OF 0.3784 AC.
- SEWER UTILITY EASEMENT 200 # OF 0.0046 AC.
- TEMPORARY CONSTRUCTION STRIP

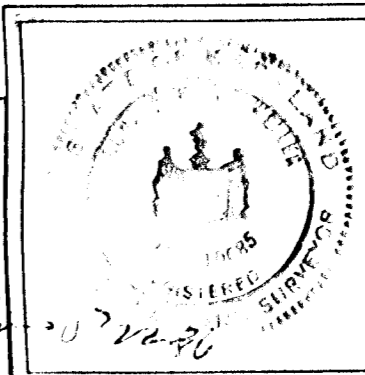
RECORDED IN PLAT BOOK _____, ON _____, 19____ AMONG THE LAND RECORDS OF HOWARD COUNTY, MD.

UTILITY EASEMENTS APPROVED AND ACCEPTED BY HOWARD COUNTY DEPARTMENT OF PUBLIC WORKS
 BY: Richard Jones Chief, Bureau of Engineering
 DEPARTMENT OF PUBLIC WORKS

BALTIMORE-WASHINGTON INDUSTRIAL PARK

BLOCK "E", PARCEL "O"
 TAX MAP 48, PARCEL 9
 6TH ELECTION DISTRICT
 HOWARD COUNTY, MARYLAND
 RECORDED DEC. 16, 1985 IN PLAT BOOK 6525

KIDDE CONSULTANTS, INC.
 ENGINEERS • PLANNERS • SURVEYORS
 1100 WEST STREET / SUITE 100 / LAUREL, MD 20707
 (Wash.) (301) 953-1821 / 792-8086 (Balt.)



DATE: MAY, 1986 SCALE: 1" = 50'

PLAT NO.: 24-1502-WS-1
 CONTRACT NO.: 24-1502 D
 SCALE: 1" = 50'
 DATE: 5-19-86

SEWER UTILITY EASEMENT LEGEND

NO.	BEARING & DISTANCE
20	S 14° 33' 21" W 10.00'
21	N 75° 26' 59" W 10.00'
22	N 14° 53' 21" E 20.00'
23	S 75° 26' 37" E 10.08'
24	RADIUS = 666.62' LENGTH = 10.00' CHORD = S 14° 59' 09" W 10.00'