

VICINITY MAP
SCALE: 1" = 2000'

OF CONSTRUCTION
CURVE DATA

Δ = 64°39'02"
Dc = 04°00'00"
R = 1432.39'
L = 1616.26'
T = 906.40'
E = 262.69'
S.E. = 0.02 1/2

OF CONSTRUCTION
CURVE DATA

Δ = 40°52'05"
Dc = 04°00'00"
R = 1432.39'
L = 1021.70'
T = 533.67'
E = 19.19'
S.E. = 0.02 1/2

FEE SIMPLE

NO	RADIUS	LENGTH	TANGENT	DELTA	CHORD BEARING	DISTANCE
(B)	485.00'	128.01'	64.38'	15°07'20"	S17°05'54" E	127.64'
(F)	1472.39'	438.89'	221.08'	17°04'43"	N16°54'36" W	437.26'
(H)	1392.39'	299.13'	150.14'	12°18'33"	N14°31'31" W	298.56'

- (A) N35°16'39"E 54.79'
- (C) S09°32'14"E 628.07'
- (D) S12°34'59"E 115.50'
- (E) S15°21'47"E 151.83'
- (G) N08°22'14"W 251.08'

- ACQUIRED PRESCRIPTIVE RIGHT OF WAY
15420 SQ. FT. OR 0.354 AC.
- FEE SIMPLE ACQUISITION
29788 SQ. FT. OR 0.6838 AC.
- REVERTIBLE GRADING EASEMENT
31,376 SQ. FT. OR 0.7203 AC.
- TEMPORARY CONSTRUCTION EASEMENT
5677 SQ. FT. OR 0.1303 AC.

DRAWN BY: R.D.C. CHECKED BY: M.S.C.

PROGRESSIVE ENGINEERING CONSULTANTS
ENGINEERS-PLANNERS-SURVEYORS
14333 LAUREL-BOWIE ROAD, SUITE 108
LAUREL, MARYLAND 20708

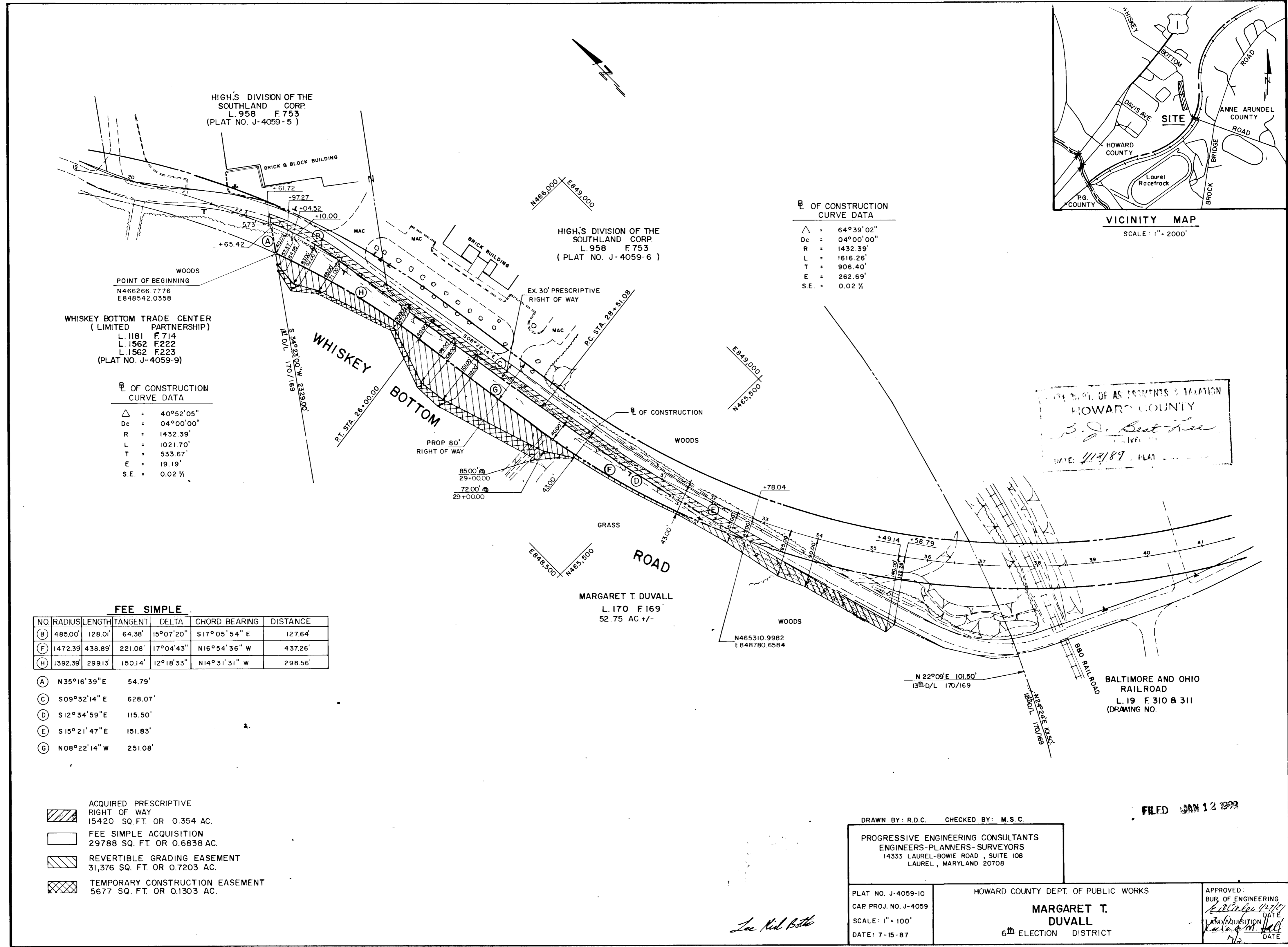
PLAT NO. J-4059-10
CAP PROJ. NO. J-4059
SCALE: 1" = 100'
DATE: 7-15-87

HOWARD COUNTY DEPT. OF PUBLIC WORKS
MARGARET T. DUVALL
6th ELECTION DISTRICT

APPROVED:
BUR. OF ENGINEERING
[Signature]
DATE: 1/12/89
BY: *[Signature]*
DATE: 1/12/89

FILED JAN 12 1989

Lee Neil Bette



HIGH'S DIVISION OF THE
SOUTHLAND CORP.
L. 958 F. 753
(PLAT NO. J-4059-5)

HIGH'S DIVISION OF THE
SOUTHLAND CORP.
L. 958 F. 753
(PLAT NO. J-4059-6)

WHISKEY BOTTOM TRADE CENTER
(LIMITED PARTNERSHIP)
L. 1181 F. 714
L. 1562 F. 222
L. 1562 F. 223
(PLAT NO. J-4059-9)

POINT OF BEGINNING
N466266.7776
E848542.0358

MARGARET T. DUVALL
L. 170 F. 169
52.75 AC +/-

DEPT. OF ASSESSMENTS & TAXATION
HOWARD COUNTY
B. J. Best Tree
DATE: 1/12/89

BALTIMORE AND OHIO
RAILROAD
L. 19 F. 310 & 311
(DRAWING NO.)