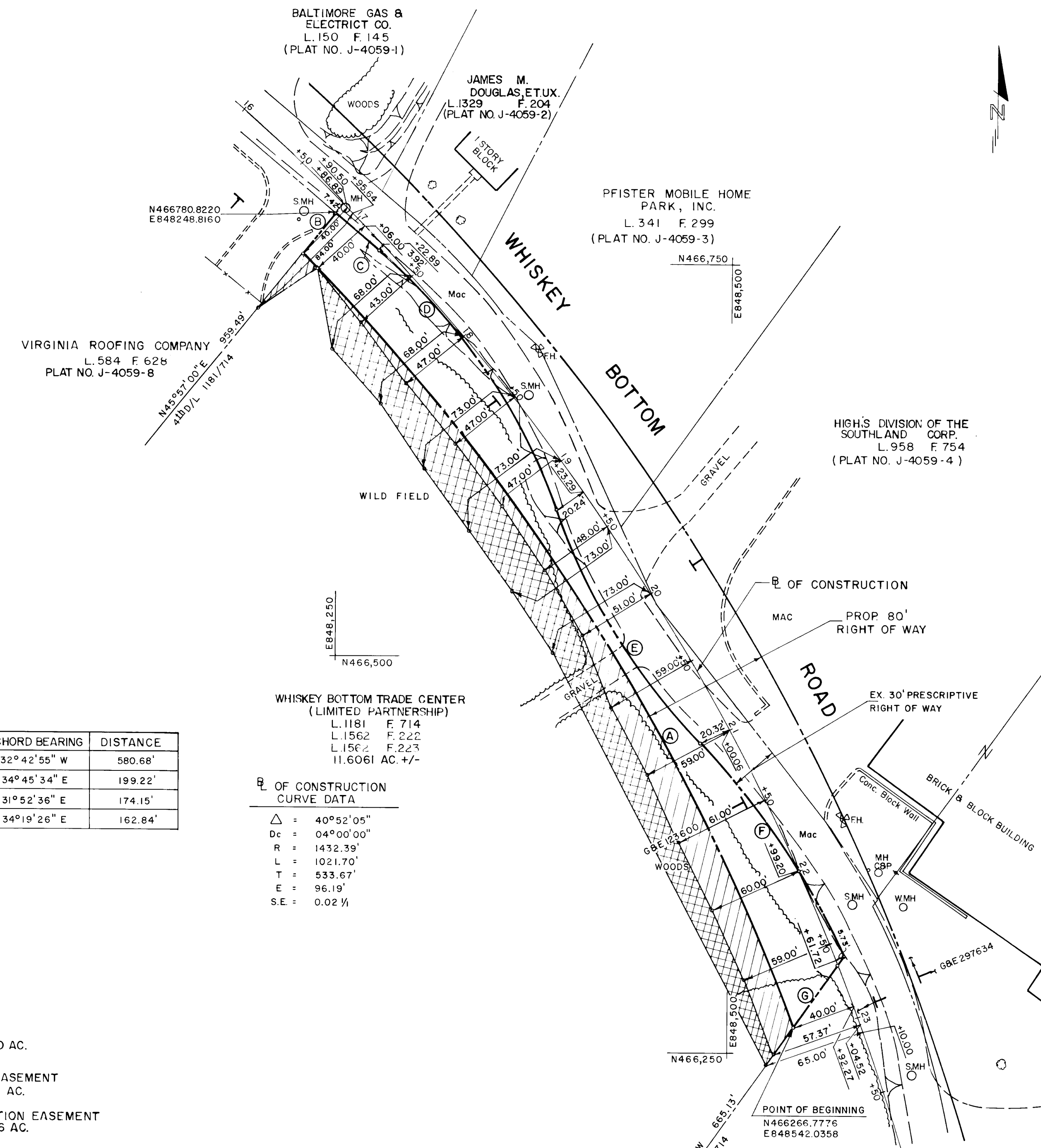


VICINITY MAP  
SCALE: 1" = 2000'



**FEE SIMPLE**

NO.	RADIUS	LENGTH	TANGENT	DELTA	CHORD BEARING	DISTANCE
(A)	1392.39'	584.97'	296.86'	24°04'16"	N32°42'55" W	580.68'
(D)	385.00'	201.51'	103.12'	29°59'21"	S34°45'34" E	199.22'
(E)	415.00'	175.45'	89.06'	24°13'25"	S31°52'36" E	174.15'
(F)	485.00'	163.62'	82.59'	19°19'44"	S34°19'26" E	162.84'

- (B) N 79° 56' 46" E 32.78'
- (C) S 49° 45' 14" E 36.02'
- (G) S 35° 16' 39" W 54.79'

WHISKEY BOTTOM TRADE CENTER  
(LIMITED PARTNERSHIP)  
L. 1181 F. 714  
L. 1562 F. 222  
L. 1562 F. 223  
11.6061 AC. +/-

℄ OF CONSTRUCTION  
CURVE DATA  
 $\Delta = 40^{\circ}52'05''$   
 $D_c = 04^{\circ}00'00''$   
 $R = 1432.39'$   
 $L = 1021.70'$   
 $T = 533.67'$   
 $E = 96.19'$   
 $S.E. = 0.02 \frac{1}{2}$

- FEE SIMPLE ACQUISITION  
16334 SQ. FT. OR 0.3750 AC.
- REVERTIBLE GRADING EASEMENT  
7845 SQ. FT. OR 0.1801 AC.
- TEMPORARY CONSTRUCTION EASEMENT  
11744 SQ. FT. OR 0.2696 AC.

MARGARET T. DUVALL  
L. 170 F. 169  
(PLAT NO. J-4059-10)

PROGRESSIVE ENGINEERING CONSULTANTS  
ENGINEERS-PLANNERS-SURVEYORS  
14333 LAUREL-BOWIE ROAD, SUITE 108  
LAUREL, MARYLAND 20708

PLAT NO. J-4059-9  
CAP PROJ. NO. J-4059  
SCALE: 1" = 50'  
DATE: 7-15-87

HOWARD COUNTY DEPT. OF PUBLIC WORKS  
**WHISKEY BOTTOM TRADE CENTER  
LIMITED PARTNERSHIP**  
6<sup>th</sup> ELECTION DISTRICT

APPROVED:  
BUR. OF ENGINEERING  
DATE  
LAND ACQUISITION  
DATE



*10/7/88*