

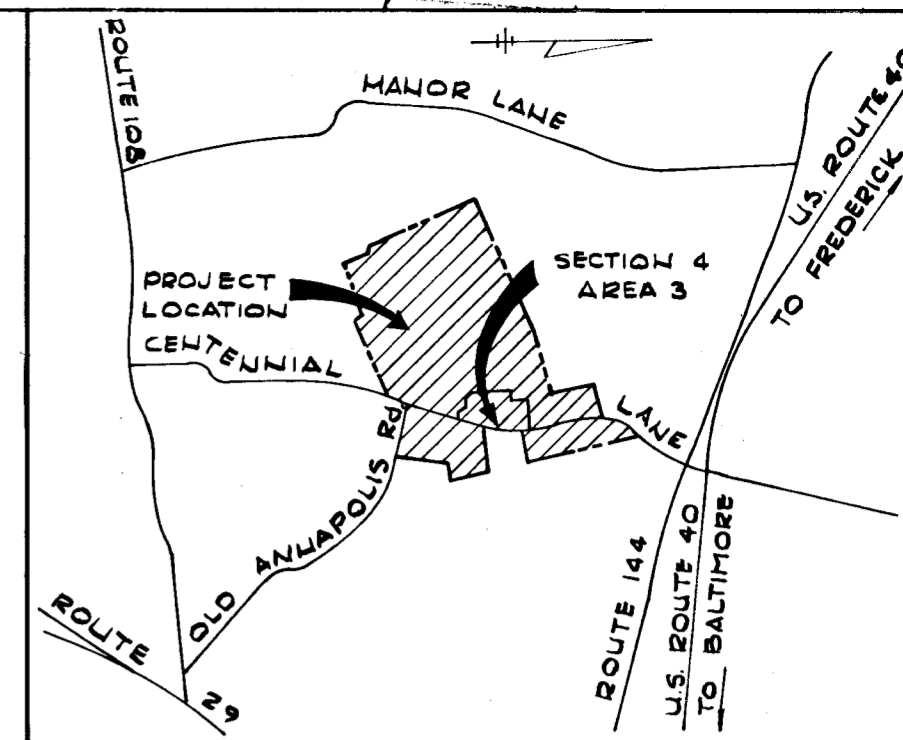
7697

COORDINATE SCHEDULE					
No.	North	East	No.	North	East
1304	520699.12	838 583.94	1300	520902.03	838 156.57
1309	520618.00	838 596.00	1303	520892.48	838 502.81
1306	520438.69	838 714.40			
1307	520435.31	838 723.82			
1245	520992.03	838 248.74			

COORDINATES SHOWN ARE EXTENSIONS MADE FROM THE MARYLAND STATE PLANE COORDINATE SYSTEM. BEARINGS REFER TO TRUE NORTH AND ARE BASED ON HOWARD COUNTY GEODETIC SURVEY POINTS NOS. 3140002 AND NO. 3140003

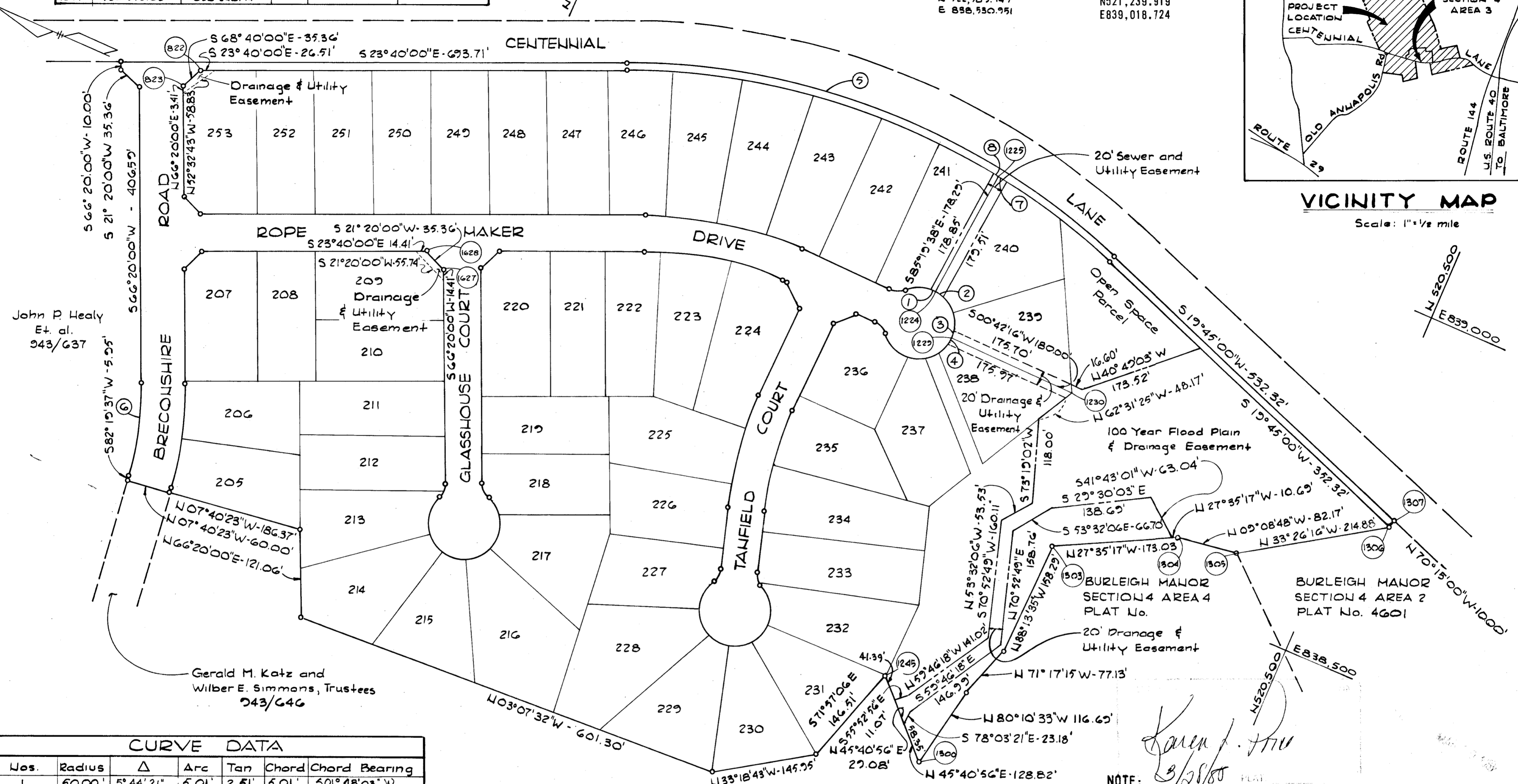
NO. 3140002  
N 522,589.749  
E 838,550.951

NO. 3140003  
N 521,239.919  
E 839,018.724



VICINITY MAP

Scale: 1" = 1/2 mile



John P. Healy Et. al. 943/637

Gerald M. Katz and Wilber E. Simmons, Trustees 943/646

John P. Healy, George J. Sybert Pamela J. Cala, Trustees and Costain Washington 943/637

*Karen J. Hill*  
3/28/80

NOTE: THE UNDERSIGNED, OWNERS OF THE PROPERTY SHOWN ON THIS PLAT, GRANT UNTO HOWARD COUNTY, MARYLAND, ITS SUCCESSORS AND ASSIGNS THE RIGHT TO LAY, CONSTRUCT AND MAINTAIN SEWERS, DRAINS, WATER PIPES, AND OTHER MUNICIPAL UTILITIES AND SERVICES IN AND THROUGH THE SPECIFIC EASEMENT AREAS SHOWN HEREON, TO THE END THAT THE SPECIFIC LOTS SHALL BE THEREBY BURDENED WITH THE RIGHT OF WAY SHOWN HEREON, AND IT IS AGREED THAT NO BUILDING OR SIMILAR STRUCTURES OF ANY KIND SHALL BE ERRECTED IN, ON, OR OVER THE SAID RIGHT OF WAY BY THE GRANTOR, ITS SUCCESSORS AND ASSIGNS, OR HOWARD COUNTY, MARYLAND.

DAVID ADLER, TRUSTEE  
*John P. Healy*  
JOHN P. HEALY, TRUSTEE

COSTAIN WASHINGTON INC.  
*David Adler*  
DAVID ADLER  
*Joseph E. Link*  
JOSEPH E. LINK

CURVE DATA						
Nos.	Radius	Δ	Arc	Tan	Chord	Chord Bearing
1	50.00'	5° 44' 21"	5.01'	2.51'	5.01'	S 01° 48' 03" W
2	50.00'	17° 27' 27"	15.24'	7.68'	15.18'	S 13° 24' 07" W
3	50.00'	11° 32' 13"	10.07'	5.05'	10.05'	N 84° 56' 15" E
4	50.00'	11° 32' 13"	10.07'	5.05'	10.05'	S 83° 31' 41" E
5	970.00'	43° 25' 00"	735.03'	386.17'	717.57'	S 01° 57' 30" E
6	470.00'	15° 59' 37"	131.20'	66.03'	130.77'	N 74° 19' 49" E
7	960.00'	0° 53' 51"	15.04'	7.52'	15.04'	S 08° 48' 43" W
8	960.00'	0° 17' 56"	5.01'	2.51'	5.01'	S 08° 13' 41" W

NOTE: EASEMENTS AND RIGHT OF WAY APPROVED AND ACCEPTED BY HOWARD COUNTY DEPARTMENT OF PUBLIC WORKS.

BY: *William E. Kelly* 10/21/80  
(C. 2872 - D. 1445)

BY: *Kenneth A. McCord*  
KENNETH A. McCORD, P.E. & L.S. NO. 1974  
WHITMAN, REQUARDT AND ASSOCIATES  
1111 NORTH CHARLES STREET  
BALTIMORE, MARYLAND 21201

COORDINATE SCHEDULE					
No.	North	East	No.	North	East
822	522,184.07	838,635.70	823	522,196.93	838,602.77
1627	521,767.60	838,517.10	1628	521,802.53	838,527.96
1224	521,138.93	838,762.83	1229	521,093.00	838,712.39
1225	521,124.40	838,940.53	1230	520,913.02	838,710.17

PLAT FOR GRANT OF EASEMENTS TO HOWARD COUNTY, MARYLAND  
BURLEIGH MANOR  
SECTION 4 AREA 3  
(SHEET 1 OF 1)

2ND. ELECTION DISTRICT OF HOWARD COUNTY, MARYLAND

SCALE: 1" = 100'

DATE: 10-10-80

RECORDED IN PLAT BOOK \_\_\_\_\_  
ON \_\_\_\_\_ 1980, AMONG THE  
LAND RECORDS OF HOWARD COUNTY, MARYLAND