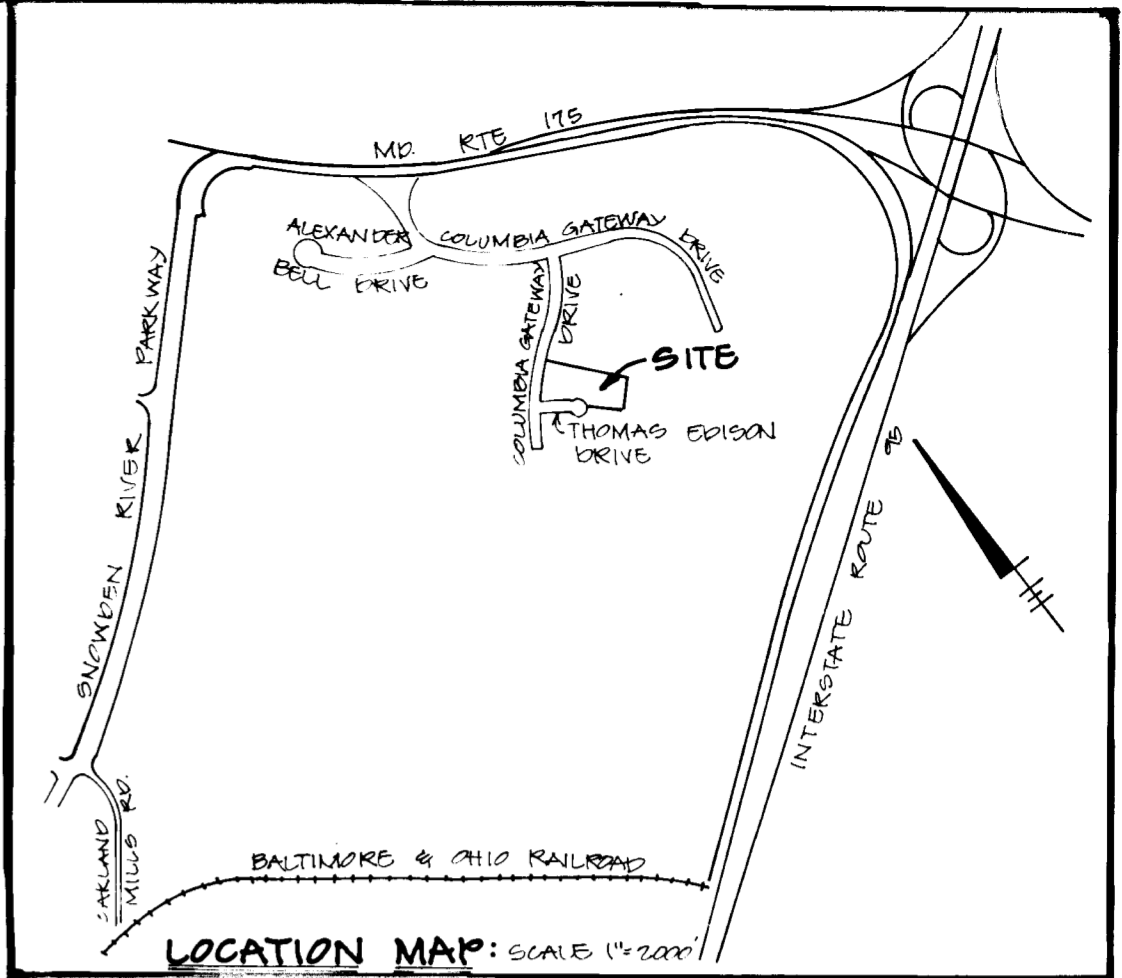
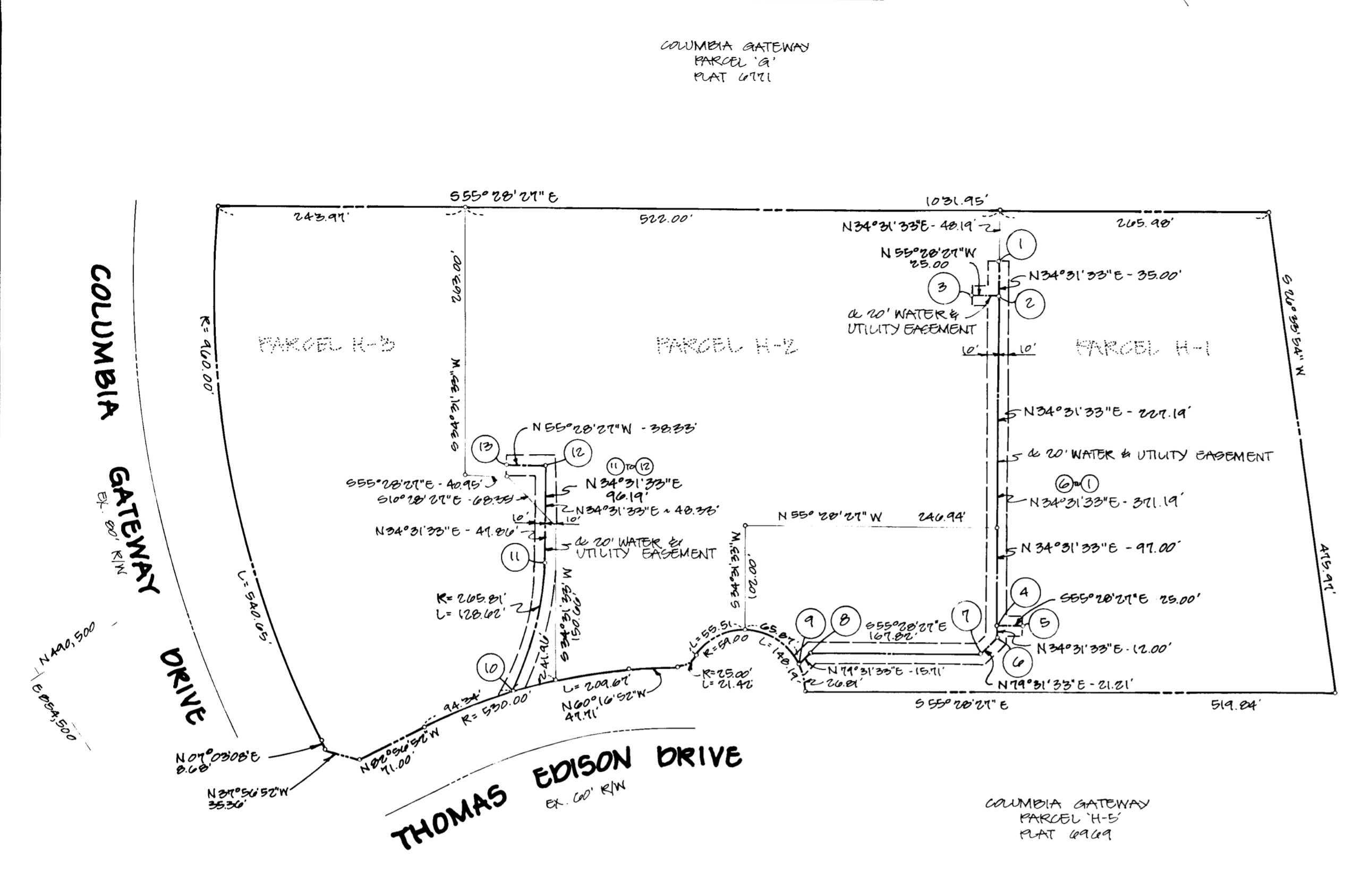


FROM	TO	RA. 'US	LF LGTH	Δ	TANGENT	CHORD
10	11	265.81'	128.62'	27°43'30"	65.60	N48°23'14"E - 127.37'



GRANT OF EASEMENT RESERVATION

THE UNDERSIGNED OWNER OF THE PROPERTY SHOWN AND DESCRIBED IN THE PLAT HEREBY GRANTED IN HOWARD COUNTY, MARYLAND, ITS SUCCESSIONS AND ASSIGNS, THE RIGHT TO LAY, CONSTRUCT AND MAINTAIN TRENCHES, WATER MAINS, UTILITY LINES, AND OTHER MUNICIPAL UTILITIES AND SERVICE LINES THROUGH THE SPECIFIC RESERVED EASEMENT AREAS AND ALIAS AREAS SHOWN HEREON. IT IS AGREED THAT NO BUILDING OR SIMILAR STRUCTURE OF ANY KIND SHALL BE ERECTED OR PLACED OVER THE SAID RIGHT-OF-WAY AND EASEMENTS BY THE GRANTEE, ITS SUCCESSORS AND ASSIGNS, OR THE GRANTEE, ITS ASSIGNS, THAT HOWARD COUNTY, MARYLAND, OR THE GRANTEE, SHALL BY THE RECORDING OF THIS PLAT TO THE OWNERSHIP OF THESE EASEMENT AREAS, UNTIL SUCH TIME AS THE PUBLIC FACILITIES LOCATED WITHIN THE EASEMENT AREAS ARE ACCEPTED INTO THE PUBLIC SYSTEM BY HOWARD COUNTY, MARYLAND AND THE GRANTEE OF EASEMENT AND AGREEMENT, SIGNED BY THE GRANTEE HEREIN, IS RECORDED AMONG THE LAND RECORDS OF HOWARD COUNTY, MARYLAND. NOTWITHSTANDING, GRANTEE HEREBY EXPRESSLY AGREES, THAT ANY AND ALL SALES OF THE PROPERTY OR PROPERTIES DESCRIBED ON THIS PLAT PRIOR TO THE RECORDATION OF THE DEED OF EASEMENT AND AGREEMENT SHALL BE MADE SPECIFICALLY REFER TO THIS PLAT AND SHALL BE MADE SUBJECT TO THE RESERVED EASEMENT GRANTED HEREIN.

BY: Thomas Edison Limited Partnership DATE: 4-1-87
 WITNESSES: Isabella Chagnon DATE: 4-1-87

UTILITY EASEMENTS APPROVED AND ACCEPTED BY HOWARD COUNTY DEPARTMENT OF PUBLIC WORKS

BY: George W. Stevens Jr. DATE: 4-9-87
 CHIEF, BUREAU OF ENGINEERING
 DEPARTMENT OF PUBLIC WORKS

RECORDED AS PLAT _____ ON _____, 19____,
 AMONG THE LAND RECORDS OF HOWARD COUNTY, MARYLAND.

LEGEND:
 AREA OF WATER AND UTILITY EASEMENT
 (1,391) S.F. OR 0.0319 ACRES

Cheryl C. Lopez
4/24/87

PLAT FOR GRANT OF EASEMENT FOR WATER & UTILITY "COLUMBIA GATEWAY"

PARCELS H-1, H-2, & H-3
 PLAT 0969

HOWARD COUNTY, MARYLAND ELECT. DISTRICT 6
 SCALE: 1"=100' APRIL 1, 1987

PUBLIC WATER CONTRACT 44-1640-D 609-07-154

NO.	NORTH	EAST
1	490,308.94	855,507.50
2	490,280.10	855,487.67
3	490,294.27	855,467.07
4	490,013.21	855,303.92
5	489,958.84	855,324.52
6	490,003.13	855,291.12
7	489,999.77	855,176.26
8	490,014.39	855,130.00
9	490,091.53	855,122.56
10	490,227.30	854,876.93
11	490,311.88	854,972.16
12	490,391.13	855,026.68
13	490,412.85	854,095.10

ENGINEER
 GEORGE WM. STEPHENS JR.
 AND ASSOCIATES, INC.
 307 ALFPHENY AVENUE
 TOWSON, MARYLAND 21204
 (301) 825-8120

PROFESSIONAL LAND SURVEYORS

BY: George W. Stevens Jr. REG. NO. 105570 DATE 4/1/87



THE PLAT AND COORDINATES SHOWN HEREON ARE BASED UPON HOWARD COUNTY GEODETIC CONTROL TRAVERSE WHICH IS BASED UPON THE MARYLAND STATE PLANE COORDINATE SYSTEM. HOWARD COUNTY MONUMENTS NO. 22A2002, 22A2003, 22A4002