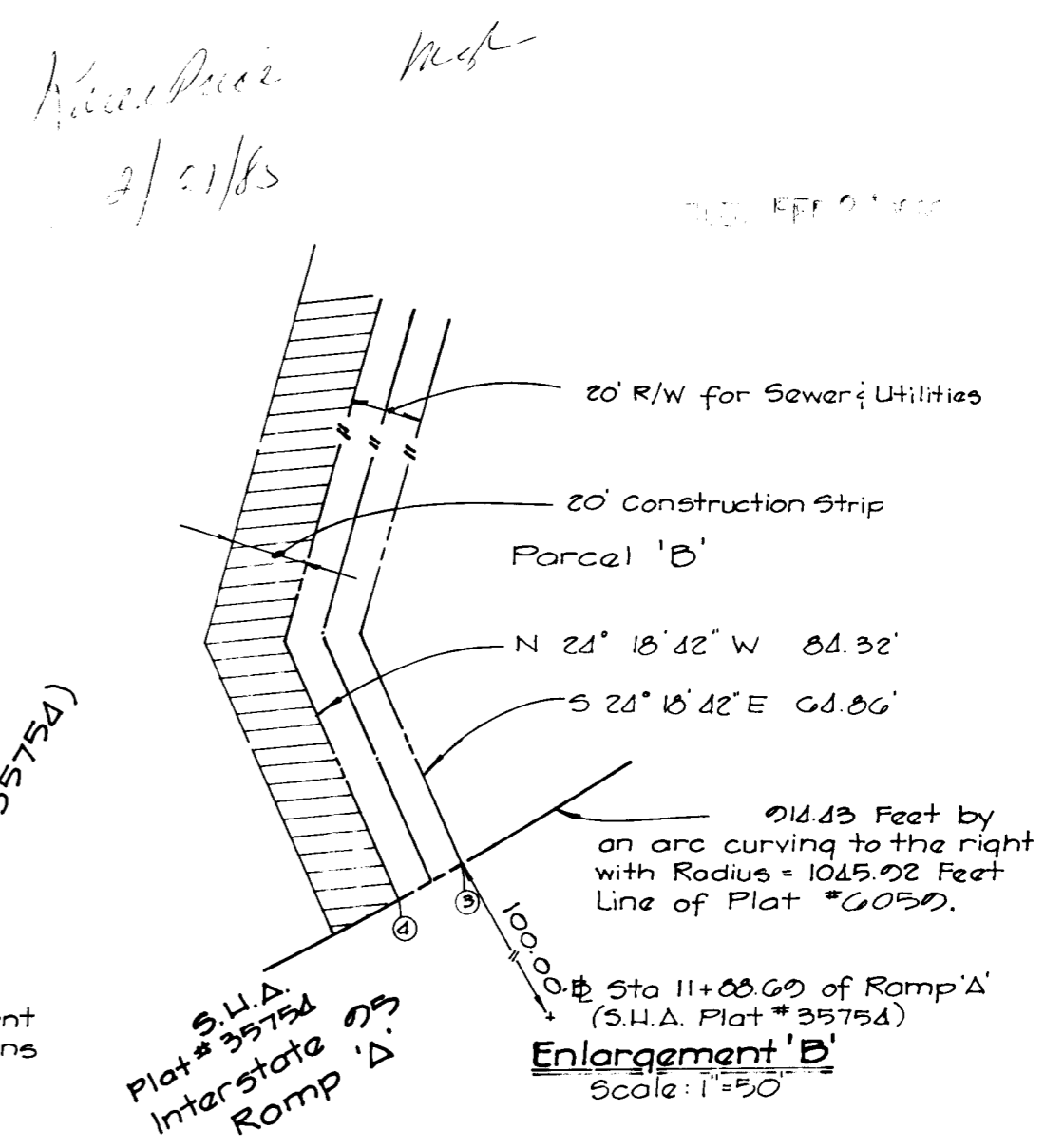
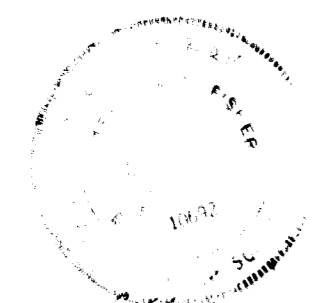


**Curve Data**

Point #'s	Radius	Arc Length	Δ	Tangent	Chord
1-2	11309.16	20.01'	00° 00' 05"	10.00'	5 63° 19' 58" E 20.01'
3-4	1045.92	23.41'	01° 16' 56"	11.71'	5 34° 22' 37" W 23.41'



Recorded as Plat \_\_\_\_\_ on \_\_\_\_\_, 1984 among the Land Records of Howard County, Maryland.



Terrill A. Fisher #10692

- Sewer & Utility Easements = 79,031 ft<sup>2</sup> or 1.814 Ac.±
- Temporary Construction Strip = 78,996 ft<sup>2</sup> or 1.813 Ac.±

**FISHER, COLLINS AND CARTER, INC.**  
 CONSULTING ENGINEERS AND LAND SURVEYORS  
 8388 COURT AVENUE  
 ELLICOTT CITY, MARYLAND 21043  
 TELEPHONE: (301) 461-2855

PLAT NO: 20-1264-S-3A	HOWARD COUNTY DEPARTMENT OF PUBLIC WORKS	APPROVED:
CAP. PROJ. NO: S-6053	SEWER AND UTILITY EASEMENT	<i>[Signature]</i> 2/18/85
SCALE: 1" = 200'	PROPERTY OF:	BUREAU OF ENGR. DATE
DATE: AUGUST 3, 1984	HOWARD RESEARCH & DEVELOPMENT CORPORATION	<i>[Signature]</i> 2/18/85
REV: JANUARY 11, 1985	6TH ELECTION DISTRICT	LAND ACQUISITION DATE
	HOWARD COUNTY, MARYLAND	