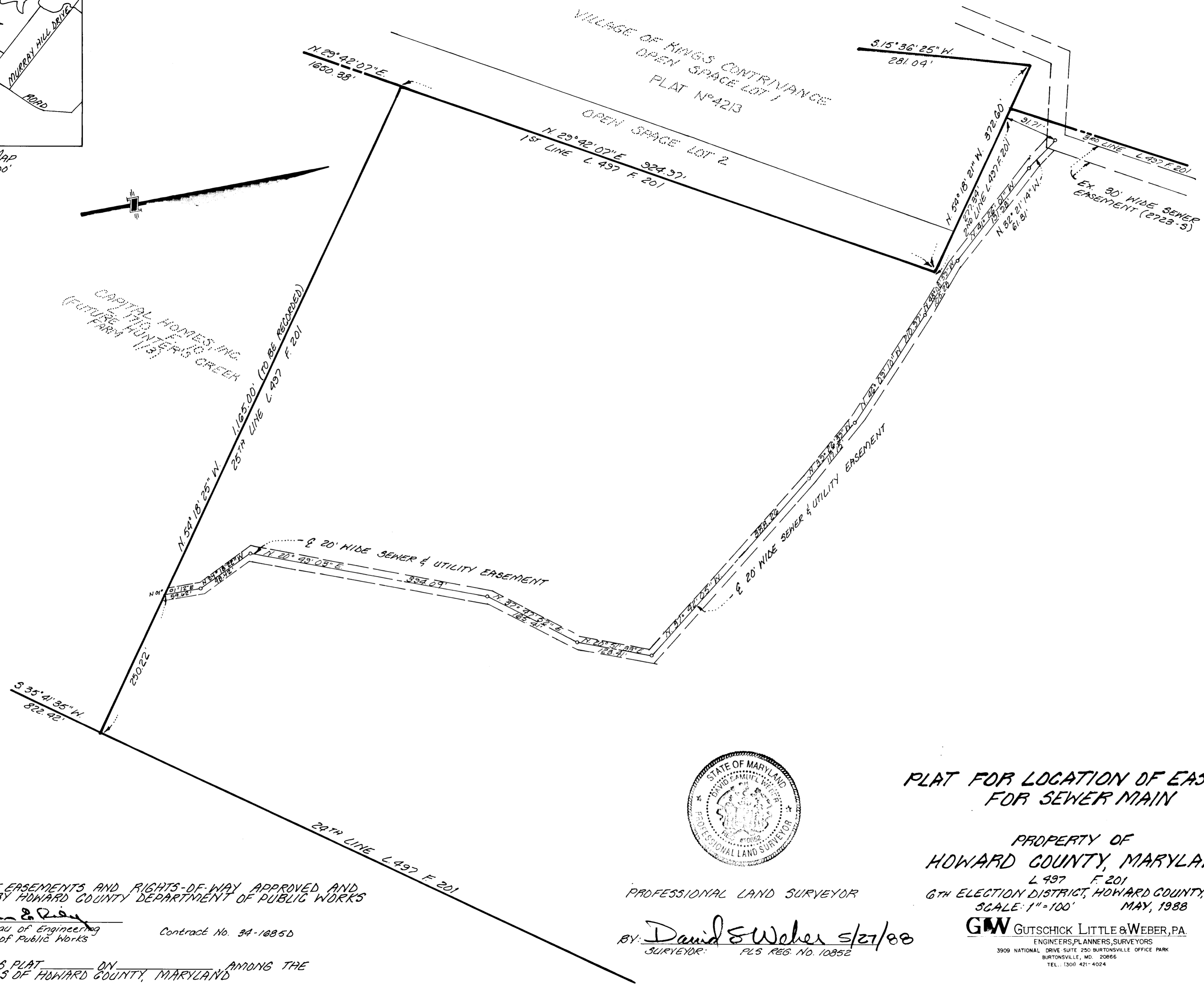


VICINITY MAP
SCALE: 1" = 2600'

CAPITAL HOMES, INC.
FUTURE HUNTERS GREEN
(FUTURE PHASE 1/13)



LOCATION OF EASEMENTS AND RIGHTS-OF-WAY APPROVED AND ACCEPTED BY HOWARD COUNTY DEPARTMENT OF PUBLIC WORKS
BY: W. Sweeney & P. R. ...
Chief, Bureau of Engineering
Department of Public Works
Contract No. 34-1685D

RECORDED AS PLAT _____ ON _____ AMONG THE
LAND RECORDS OF HOWARD COUNTY, MARYLAND



PROFESSIONAL LAND SURVEYOR
BY: David S. Weber 5/27/88
SURVEYOR: PLS REG. NO. 10852

PLAT FOR LOCATION OF EASEMENT FOR SEWER MAIN

PROPERTY OF
HOWARD COUNTY, MARYLAND
L. 497 F. 201
6TH ELECTION DISTRICT, HOWARD COUNTY, MARYLAND
SCALE: 1" = 100' MAY, 1988

GLW GUTSCHICK LITTLE & WEBER, P.A.
ENGINEERS, PLANNERS, SURVEYORS
3909 NATIONAL DRIVE SUITE 250 BURTONSVILLE OFFICE PARK
BURTONSVILLE, MD. 20866
TEL.: (301) 421-4024