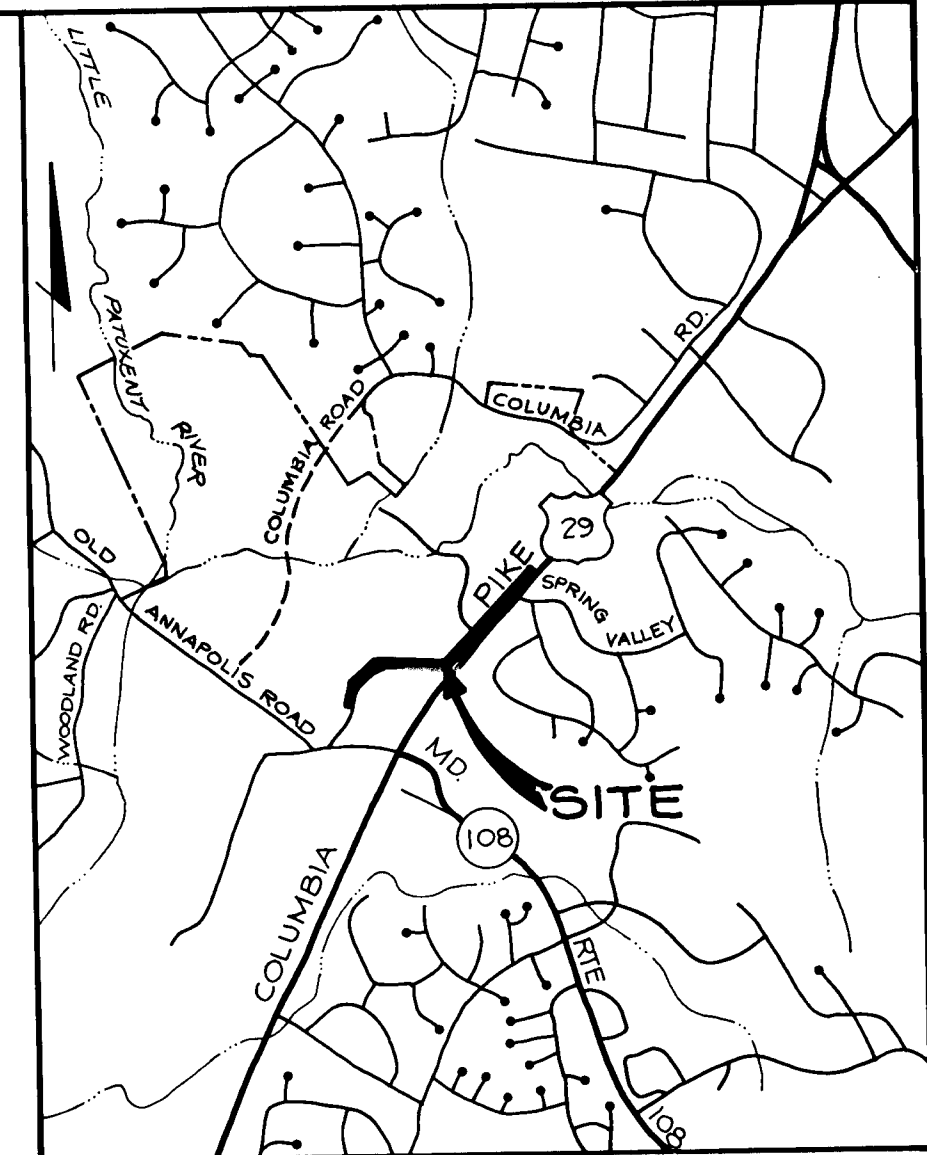
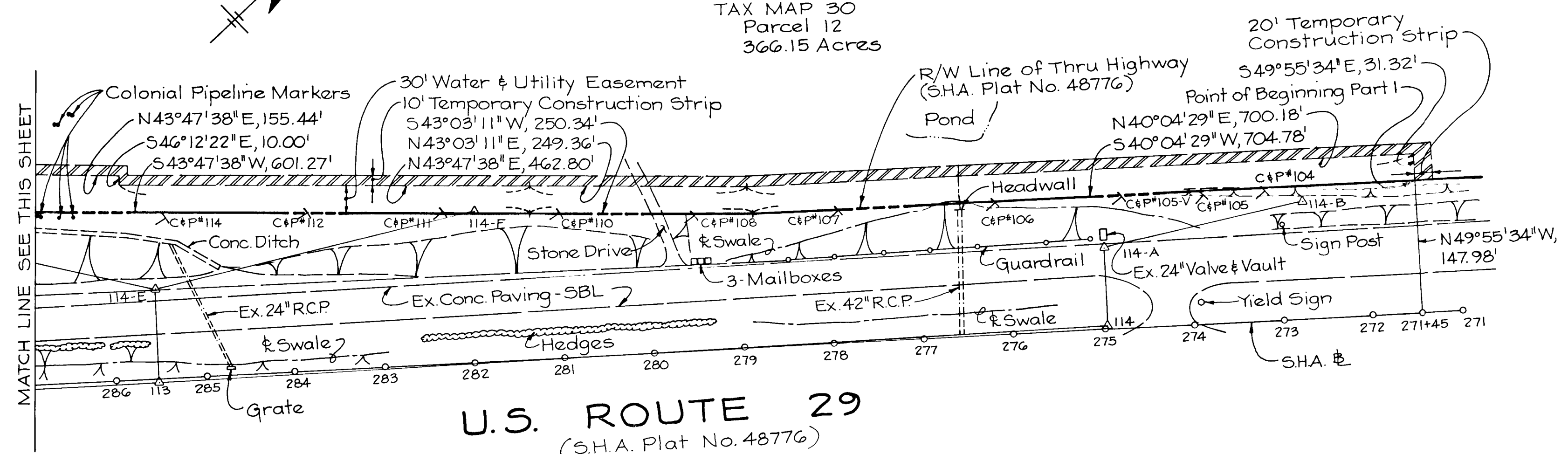


Property Of
 HOWARD RESEARCH AND
 DEVELOPMENT LAND COMPANY
 Liber 493, Folio 602
 TAX MAP 30
 Parcel 12
 366.15 Acres

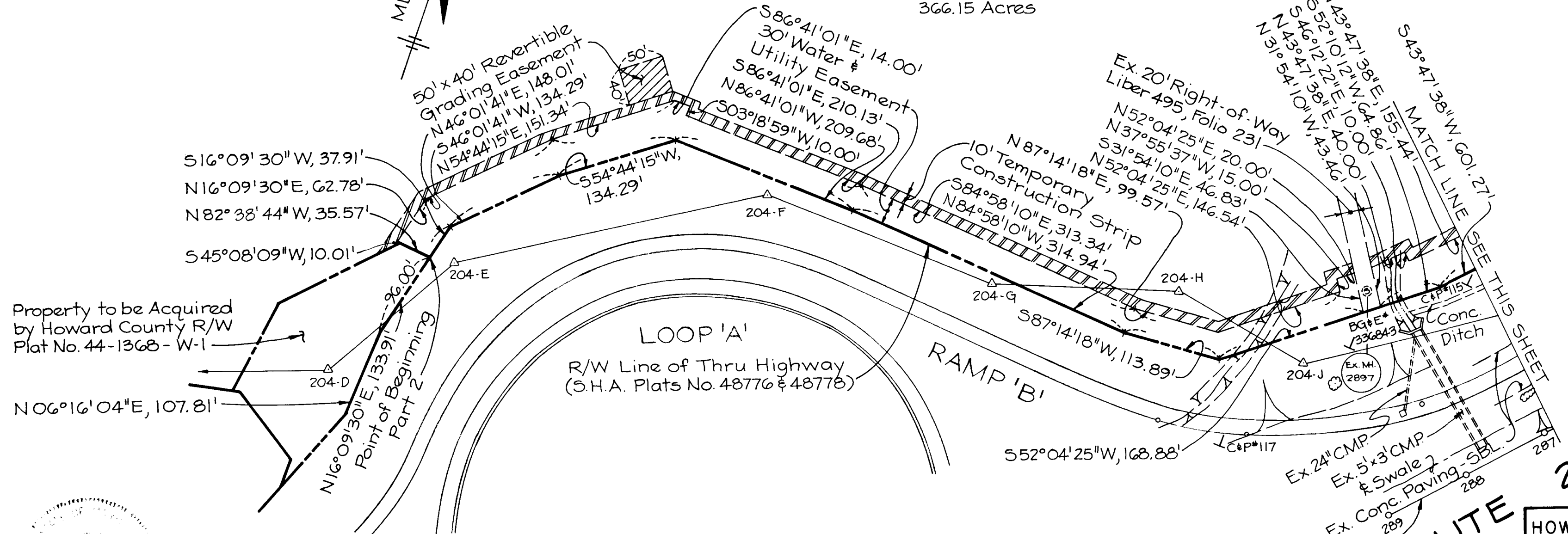


LOCATION MAP
 Scale: 1" = 2,000'

- WATER & UTILITY EASEMENT
 PART 1 : 52,973.20 SQ. FT. or 1.216 AC. ±
 PART 2 : 37,990.31 SQ. FT. or 0.872 AC. ±
- TEMPORARY CONSTRUCTION STRIP
 PART 1 : 27,281.50 SQ. FT. or 0.626 AC. ±
 PART 2 : 12,320.50 SQ. FT. or 0.283 AC. ±
- REVERTIBLE GRADING EASEMENT
 2,000 SQ. FT. or 0.046 AC. ±



Property Of
 HOWARD RESEARCH AND
 DEVELOPMENT LAND COMPANY
 Liber 493, Folio 602
 TAX MAP 30
 Parcel 12
 366.15 Acres



Property to be Acquired
 by Howard County R/W
 Plat No. 44-1368 - W-1

Recorded as Plat _____ on _____
 1986 among the Land Records of
 Howard County, Maryland.



KIDDE CONSULTANTS, INC.
 1020 CROMWELL BRIDGE ROAD
 BALTIMORE, MARYLAND 21204

HOWARD COUNTY DEPARTMENT OF PUBLIC WORKS	
WATER AND UTILITY EASEMENT	
HOWARD RESEARCH AND DEVELOPMENT LAND COMPANY 2ND ELECTION DISTRICT	
PLAT NO. 14-1374-W&S-1-A	APPROVED LAND ACQUISITION <i>John M. Bell</i> 3/2/87
CAP. PROJ. W-8117	SCALE: 1" = 100'
DATE: JUNE 2, 1986	BUREAU OF ENGINEERING <i>Donald W. Boyles</i> 3/2/87

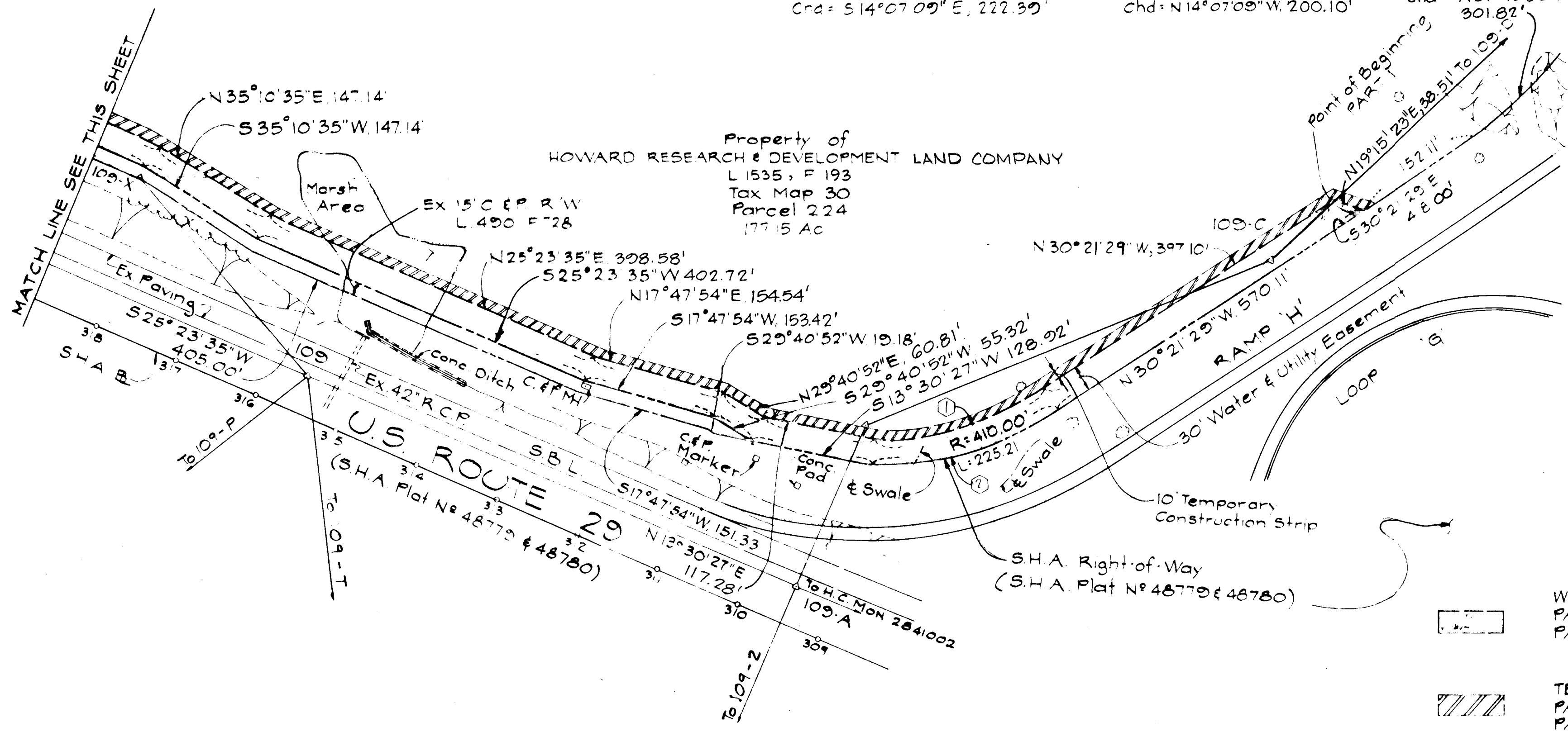
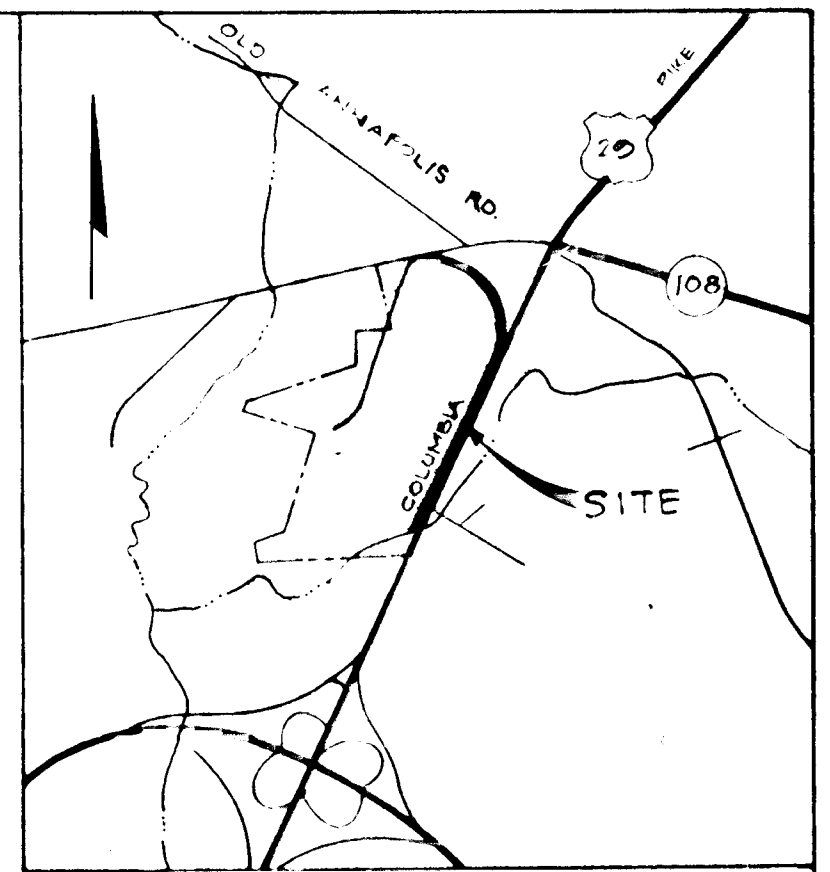
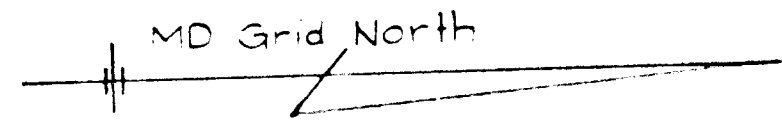
CURVE DATA ②

CURVE DATA ①

Δ = 31°28'20"
 R = 410.00'
 L = 225.21'
 T = 115.52'
 Chd = S14°07'09" E, 222.39'

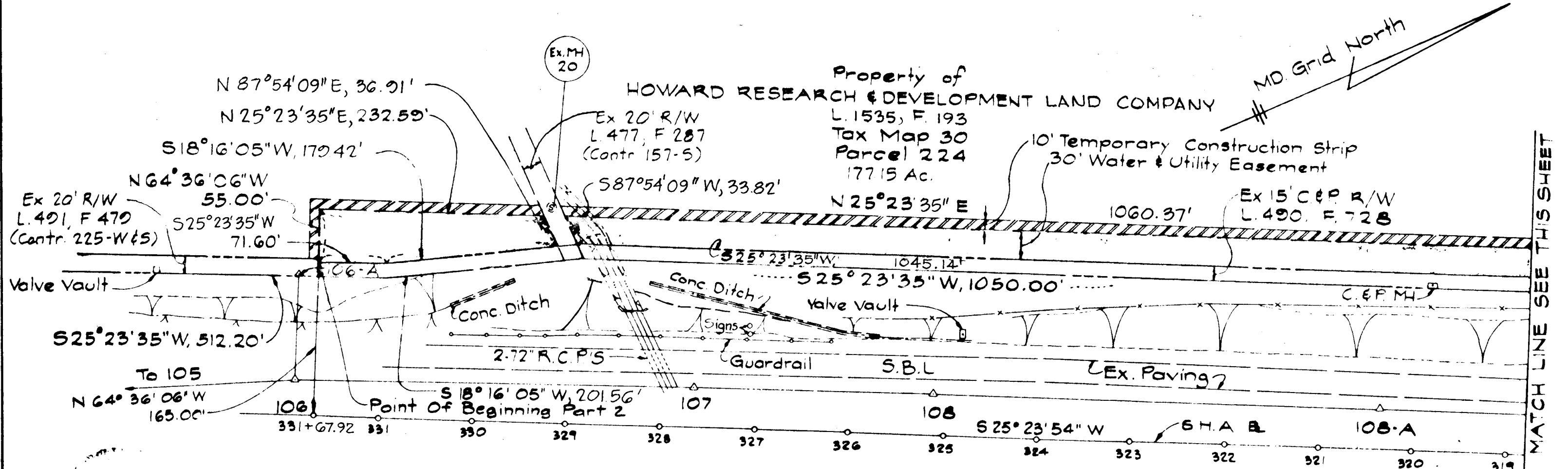
Δ = 30°31'50"
 R = 380.00'
 L = 202.49'
 T = 103.71'
 Chd = N14°07'09" W, 200.10'

R = 405.00'
 L = 309.28
 Chd = N51°43'58" W, 301.82'



Water & UTILITY EASEMENT
 PART 1: 75,540.245 SQ FT or 1.734 AC ±
 PART 2: 11,469.335 SQ FT or 0.263 AC ±

TEMPORARY CONSTRUCTION STRIP
 PART 1: 26,205.065 SQ FT or 0.602 AC ±
 PART 2: 2,972.16 SQ FT or 0.068 AC ±



U.S. ROUTE 29
 (SHA Plats N° 48780 & 48782)

Recorded as Plat _____ on _____, 1986
 among the Land Records of Howard County,
 Maryland.

HOWARD COUNTY DEPARTMENT OF PUBLIC WORKS
WATER AND UTILITY EASEMENT
 HOWARD RESEARCH AND DEVELOPMENT LAND CO.
5TH ELECTION DISTRICT

PLAT N° 14-1374-W45-2A
 CAP PROJ. W-8117
 SCALE: 1"=100'
 REV: MARCH 19, 1986
 REV: AUGUST 15, 1985
 DATE: JULY 30, 1985

LAND ACQUISITION
Edmund M. Hall
 BUREAU OF ENGINEERING
Small
 DATE: 3/2/87