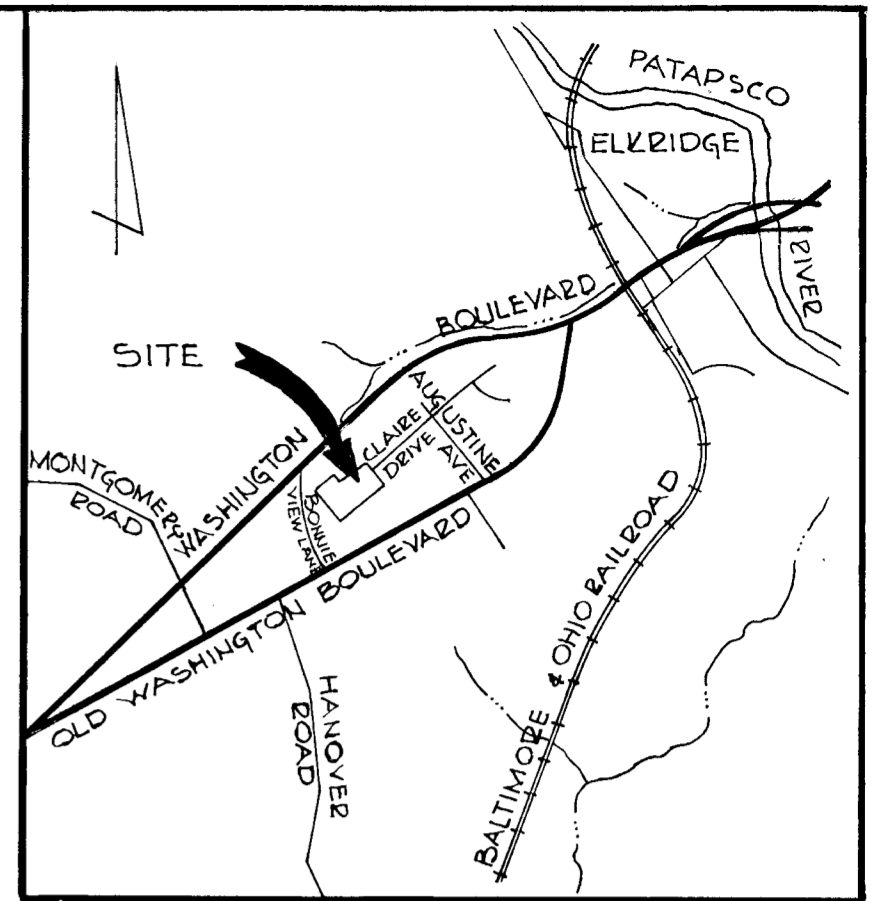


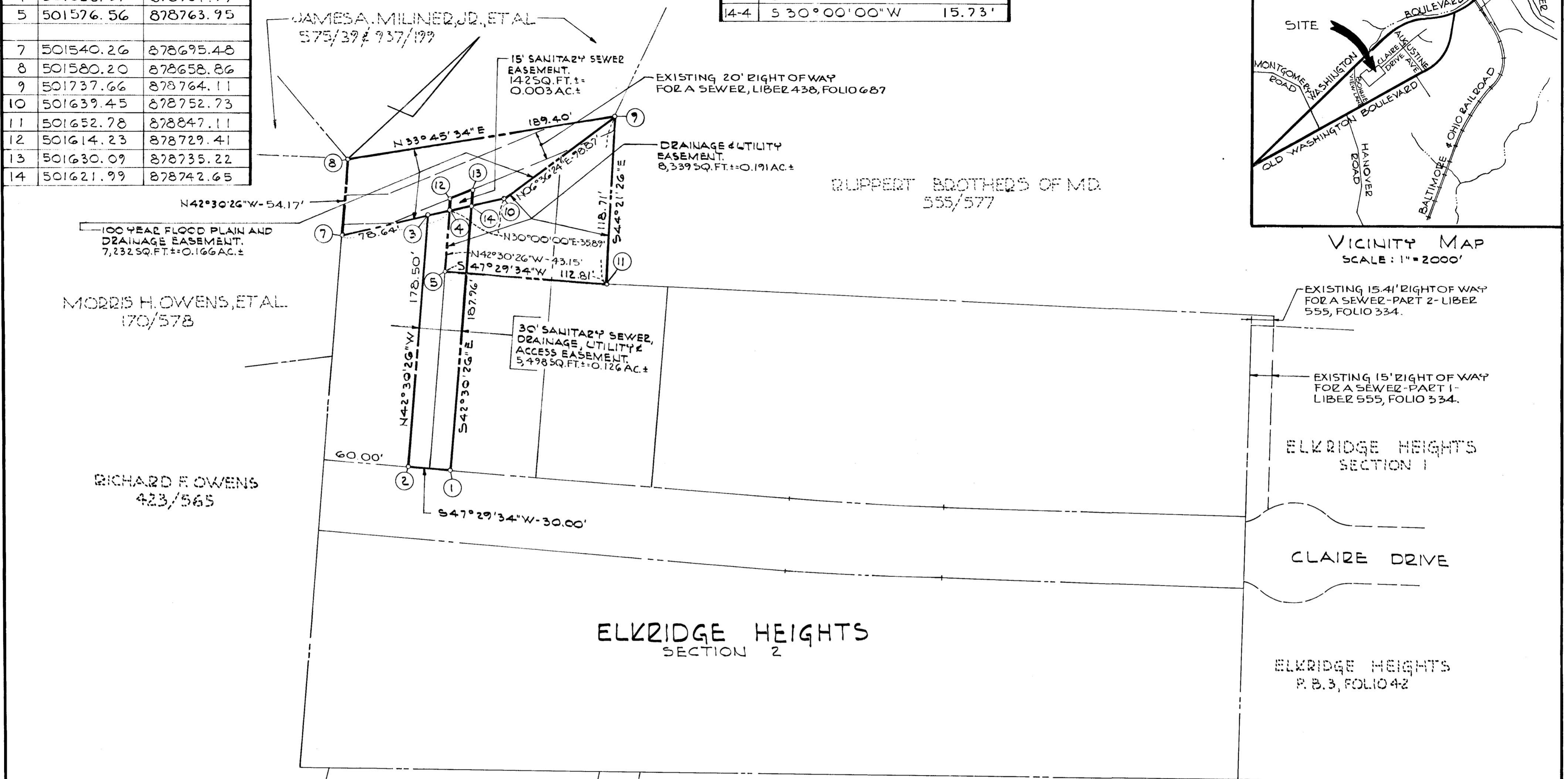
COORDINATE TABLE		
No.	NORTH	EAST
1	501483.43	878869.65
2	501463.16	878847.53
3	501594.75	878726.92
4	501608.37	878734.79
5	501576.56	878763.95
7	501540.26	878695.48
8	501580.20	878658.86
9	501737.66	878764.11
10	501639.45	878752.73
11	501652.78	878847.11
12	501614.23	878729.41
13	501630.09	878735.22
14	501621.99	878742.65

COORDINATES SHOWN HEREON ARE BASED ON THE MARYLAND STATE GRID SYSTEM.

Nº-Nº	METES & BOUNDS
3-14	N 30°00'00" E 31.46'
10-7	S 30°00'00" W 114.53'
4-12	N 42°30'26" W 7.95'
12-13	N 20°07'44" E 16.89'
13-14	S 42°30'26" E 10.99'
14-4	S 30°00'00" W 15.73'



VICINITY MAP  
SCALE: 1" = 2000'



EASEMENTS APPROVED AND ACCEPTED BY HOWARD COUNTY DEPARTMENT OF PUBLIC WORKS.

(By) *Frederick B. Raley*  
(CONTACT 14-0943-D) *11-7-80*

RECORDED IN PLAT BOOK ON AMONG THE LAND RECORDS OF HOWARD COUNTY, MARYLAND.

A. GUS MASTACCI, ETAL  
840/715

STEWART M. WILDERSON  
232/491

SAMUEL E. SOMERS, ETAL  
128/232

PROFESSIONAL LAND SURVEYOR  
(By) *William G. Raley #4575*  
PURDUM & WESCHKE  
1023 N. CALVERT ST. BALTIMORE, MD. 21202

The undersigned owners of the property shown on this plat grant unto Howard County, Maryland, its successors and assigns, the right to lay, construct and maintain sewers, drains, water pipes and other municipal utilities and services in and through the specific easement areas shown hereon, to the end that the specific lot shall be thereby burdened with the easements shown hereon, and it is agreed that no building or similar structures of any kind shall be erected on, or over the said easement areas by the grantor, its successors and assigns, or Howard County, Maryland. The right to use additional strips or parcels of land adjacent, contiguous, concentric and parallel to all easement areas as shown on the plat are hereby granted unto Howard County, Maryland, during the period of original construction only.

(By) *Donald E. Souder*  
(OWNER)

PLAT FOR GRANT OF EASEMENTS FOR SANITARY SEWER, DRAINAGE, UTILITY, 100 YEAR FLOOD PLAIN AND ACCESS.  
**ELK RIDGE HEIGHTS**  
1<sup>ST</sup> ELECTION DISTRICT  
OCTOBER 2, 1980  
HOWARD COUNTY, MARYLAND  
SCALE: 1" = 50'