

REVISION DESCRIPTION	DATE	DRAINAGE + UTILITY EASEMENT

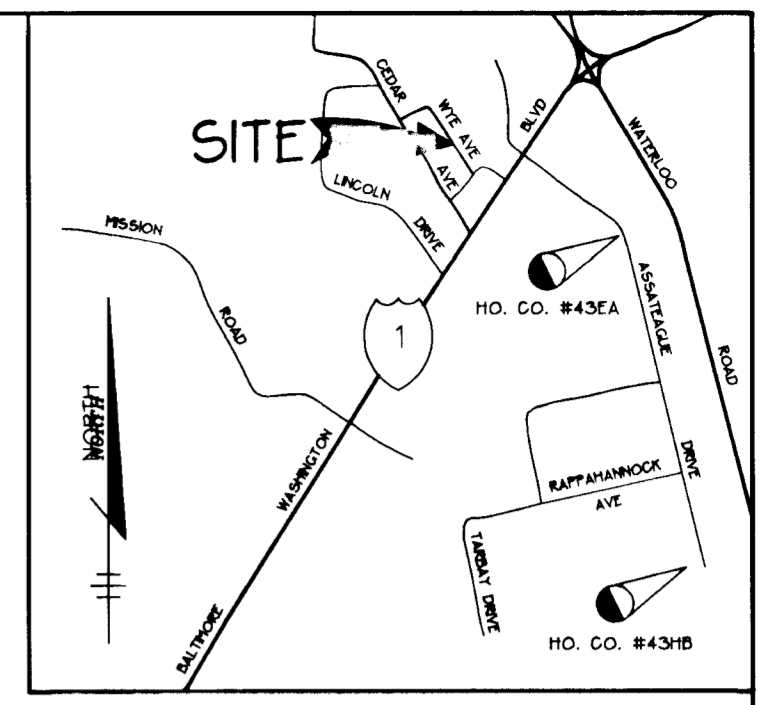
COORDINATE LIST

NO.	NORTH	EAST
A	547402.977	1371883.488
B	547481.673	1372011.186
C	547279.363	1371759.978
D	547355.562	1371883.625
E	547424.174	1371840.606

ITEM 'B'
TAX MAP 43, PARCEL 452
MARION R. FIELD (CL.201, F.598)

LINE	DIRECTION	DISTANCE
①	N 58°21'22" E	17.30'
②	S 31°27'59" E	14.00'
③	S 58°21'22" W	17.26'
④	N 31°38'38" W	14.00'

AREA=242 sq. ft. OR 0.006 Ac.



ITEM 'A'
TAX MAP 43, PARCEL 452
TIMOTHY I. FRENCH (CL. 1974, F. 489)

LINE	DIRECTION	DISTANCE
①	N 31°38'38" W	6.00'
②	N 58°21'22" E	17.32'
③	S 31°27'59" E	6.00'
④	S 58°21'22" W	17.30'

AREA=104 sq. ft. OR 0.002 Ac.

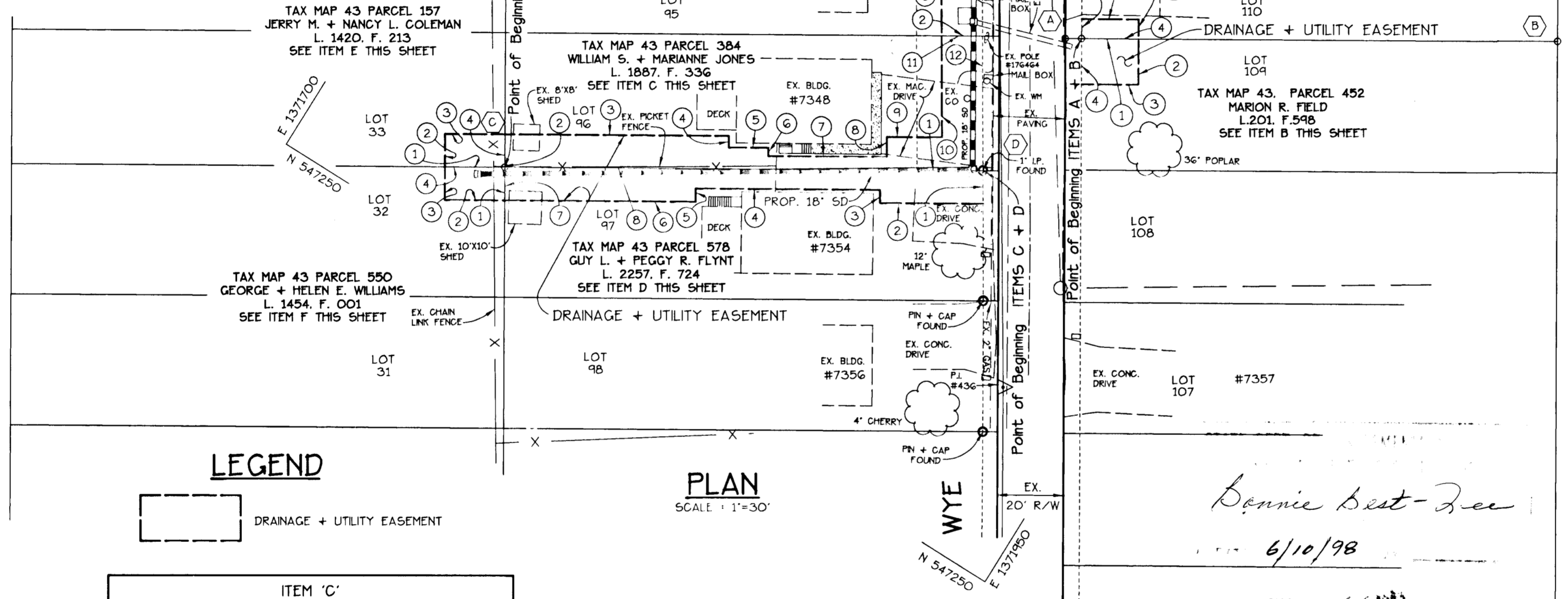
ITEM 'J'
TAX MAP 43, PARCEL 483
LESILIE B. + MARIE ANN THOMPSON (CL.3447, F.621)

LINE	DIRECTION	DISTANCE
①	S 58°21'22" W	12.89'
②	N 32°05'13" W	16.31'
③	N 57°54'47" E	13.09'
④	S 31°24'19" E	16.41'

AREA=213 sq. ft. OR 0.005 Ac.

GENERAL NOTES

- BEARING ANGLES SHOWN HEREON ARE BASED ON NAD 83 MARYLAND COORDINATE SYSTEM AS PROJECTED BY THE FOLLOWING HOWARD CO. GEODETIC CONTROL STATIONS:
43EA N 166.602.1832 m E 418.680.7467 m
43HB N 166.557.5612 m E 418.925.5891 m
- THESE PLATS ARE BASED ON A FIELD RUN AND MONUMENTED BOUNDARY SURVEY PERFORMED ON OR ABOUT JULY, 1995 BY RIEMER MUEGGE + ASSOCIATES, INC.



ITEM 'G'
TAX MAP 43, PARCEL 384
PAUL T. + VICKI M. ZELENKA (CL. 1949, F. 644)

LINE	DIRECTION	DISTANCE
①	S 32°05'13" E	40.00'
②	S 58°21'22" W	12.42'
③	N 32°05'13" W	40.00'
④	N 58°21'22" E	12.42'

AREA = 497 sq. ft. OR 0.011 Ac.

ITEM 'H'
TAX MAP 43, PARCEL 483
KENNETH C. LAPE (CL. 3094, F. 402)

LINE	DIRECTION	DISTANCE
①	S 58°21'22" W	12.42'
②	N 32°05'13" W	40.00'
③	N 57°54'47" E	12.89'
④	S 31°24'19" E	40.00'

AREA = 506 sq. ft. OR 0.012 Ac.

ITEM 'C'
TAX MAP 43, PARCEL 384
WILLIAM S. + MARIANNE JONES (CL. 1887, F. 336)

LINE	DIRECTION	DISTANCE
①	S 58°21'22" W	145.00'
②	N 31°38'38" W	10.00'
③	N 58°21'22" E	68.00'
④	S 31°38'38" E	3.50'
⑤	N 58°21'22" E	12.00'
⑥	S 31°38'38" E	2.50'
⑦	N 58°21'22" E	36.00'
⑧	N 31°38'38" W	6.00'
⑨	N 58°21'22" E	16.74'
⑩	N 32°05'13" W	30.98'
⑪	N 58°21'22" E	12.42'
⑫	S 32°05'13" E	40.98'

AREA = 1,579 sq. ft. OR 0.036 Ac.

ITEM 'D'
TAX MAP 43, PARCEL 578
GUY L. + PEGGY R. FLYNT (CL. 2257, F. 724)

LINE	DIRECTION	DISTANCE
①	S 32°04'00" E	10.00'
②	S 58°21'22" W	31.31'
③	N 31°38'38" W	4.00'
④	S 58°21'22" W	56.00'
⑤	S 31°38'38" E	4.00'
⑥	S 58°21'22" W	58.00'
⑦	N 31°38'38" W	10.00'
⑧	N 58°21'22" E	145.00'

AREA=1,229 sq. ft. OR 0.028 Ac.

ITEM 'E'
TAX MAP 43, PARCEL 157
JERRY M. + NANCY L. COLEMAN (CL. 1420, F. 213)

LINE	DIRECTION	DISTANCE
①	S 58°21'22" W	18.24'
②	N 31°38'38" W	10.00'
③	N 58°21'22" E	18.24'
④	S 31°38'38" E	10.00'

AREA=182 sq. ft. OR 0.004 Ac.

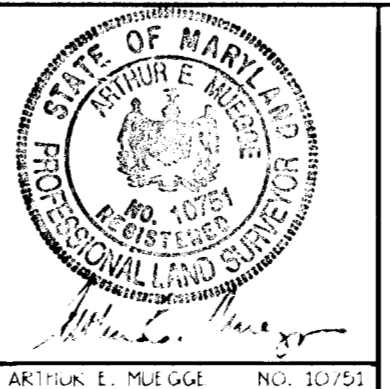
ITEM 'F'
TAX MAP 43, PARCEL 550
GEORGE + HELEN WILLIAMS (CL. 1454, F. 001)

LINE	DIRECTION	DISTANCE
①	S 31°38'38" E	10.00'
②	S 58°21'22" W	18.24'
③	N 31°38'38" W	10.00'
④	N 58°21'22" E	18.24'

AREA=182 sq. ft. OR 0.004 Ac.

RIEMER MUEGGE & ASSOCIATES, INC.
Planners • Engineers • Surveyors
8818 Centre Park Drive • Suite 200 • Columbia, MD 21045
410-997-8900 FAX: 410-997-9282
M:\PROJECT\SURVEYS\05H10470_EASPL11A.DWG

APPROVED:
REAL ESTATE SERVICES
Tina D. Hockett 6/5/98
BUREAU OF ENGINEERING
E. A. L. L. L. 4/1/98



HOWARD COUNTY DEPARTMENT OF PUBLIC WORKS
DRAINAGE + UTILITY EASEMENTS FOR WYE AVENUE
6TH ELECTION DISTRICT, HOWARD COUNTY, MARYLAND

DRAWN BY: L.J.D.
CHECKED BY: L.J.D.
PLAT NO. D-1058M-1
CAP. PROJ. NO. D-1058
SCALE: AS SHOWN
DATE: 04-09-98