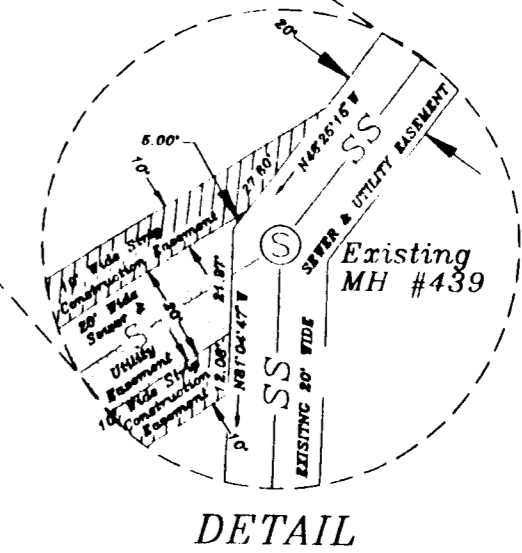
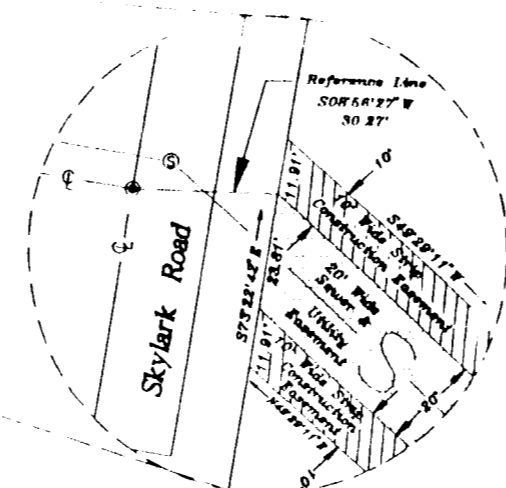


VICINITY MAP
SCALE: 1" = 1200'



DETAIL



DETAIL

HOWARD COUNTY DEPARTMENT OF PUBLIC WORKS
SEWER AND UTILITY EASEMENT
PROPERTY OF
Norman M. Heslop
20/10/97

FILED JUN 16 1997

LEGEND

- ⊙ Proposed Sewer Manhole
- S— Proposed Sewer Line
- SS— Existing Sewer Line
- ⊙ Existing Sewer Manhole
- 20' Wide Sewer & Utility Easement
Area = 1.283 Acres ± (55,881 Sq. Ft. ±)
- ▨ 10' Temporary Strip Construction Easement
Area = 1.286 Acres ± (56,008 Sq. Ft. ±)

NOTE: Coordinates shown hereon are based on values established by Howard County, Md. for the following Geodetic Control Stations (NAD83):
STA: 42EA N 547,603.6748 E 1,355,440.3193
STA: 47AB N 540,058.257 E 1,350,005.064

Match Line A

Match Line A

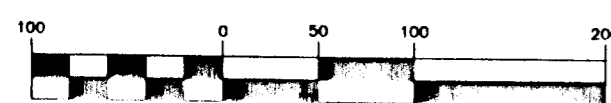
The Howard Research and Development Corporation
liber 572 folio 430

The Howard Research and Development Corporation
liber 572 folio 430

Norman E. & Miriam S. Heslop Pessin
liber 1250 folio 526

Howard Research & Development Land Company
liber 1870 folio 61

GRAPHIC SCALE



(IN FEET)
1 inch = 100 ft.

William A. Carroll
Professional Surveyor Seal

TO THE BEST OF MY KNOWLEDGE AND BELIEF I CERTIFY THIS PLAT TO BE CORRECT AS SHOWN.

William A. Carroll
WILLIAM A. CARROLL
PROPERTY LINE SURVEYOR NO. 000

DRAWN BY: Wm. Carroll

SCALE: 1" = 100'

PLAT NO. 20-3516-S1
CAPITAL PROJ. NO. S-6204
DATE: September 20, 1996
SURVEYED: April 4, 1996

HOWARD COUNTY DEPARTMENT OF PUBLIC WORKS
SEWER AND UTILITY EASEMENT
PROPERTY OF
THE HOWARD RESEARCH AND DEVELOPMENT CORPORATION
liber 572, folio 430
ELECTION DISTRICT GULFORD No. 6
HOWARD COUNTY, MARYLAND

APPROVED:
BUREAU OF ENGINEERING
Butler DATE *10/16/96*
LAND ACQUISITION
Butler DATE *10/16/96*