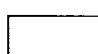
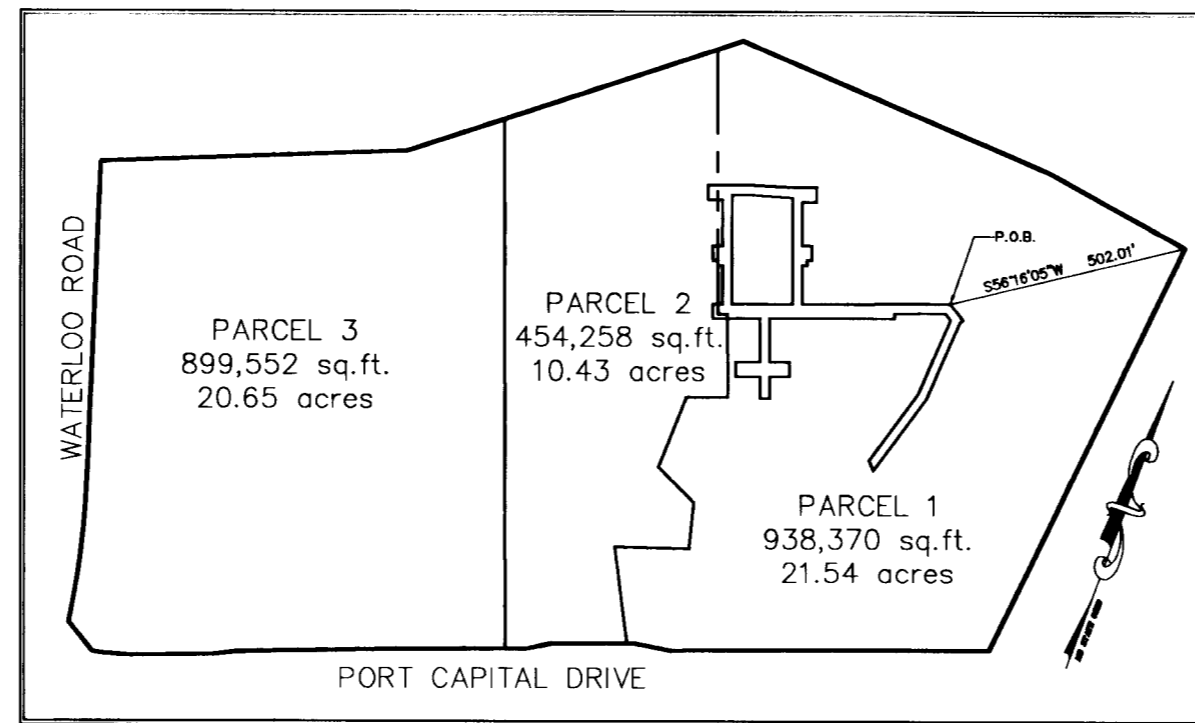
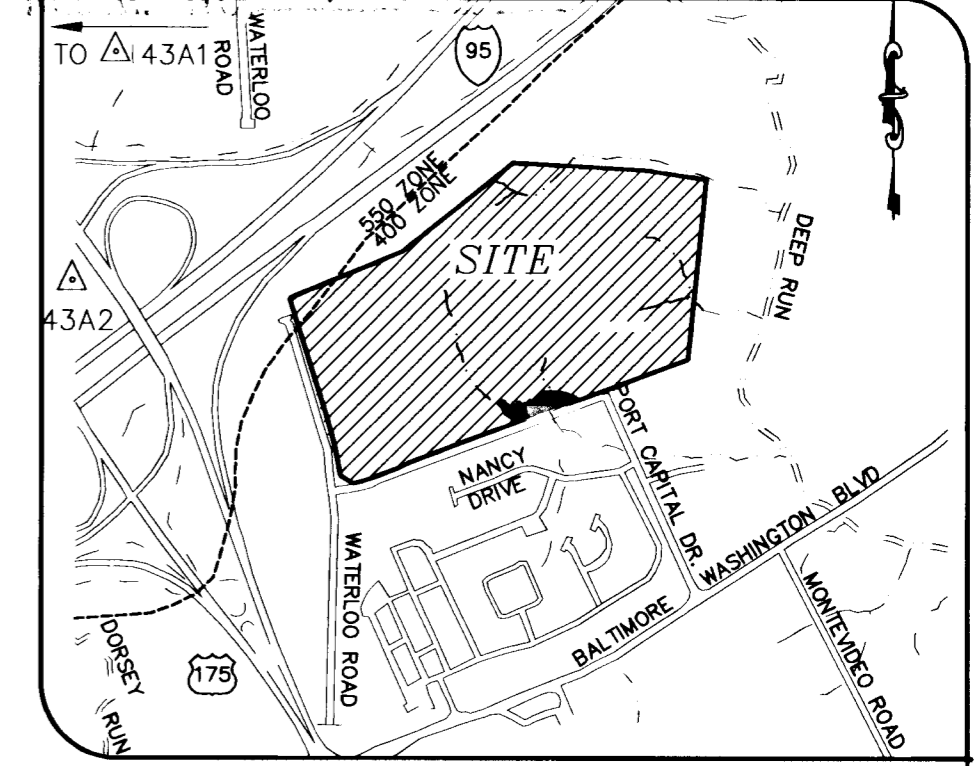


GENERAL NOTES

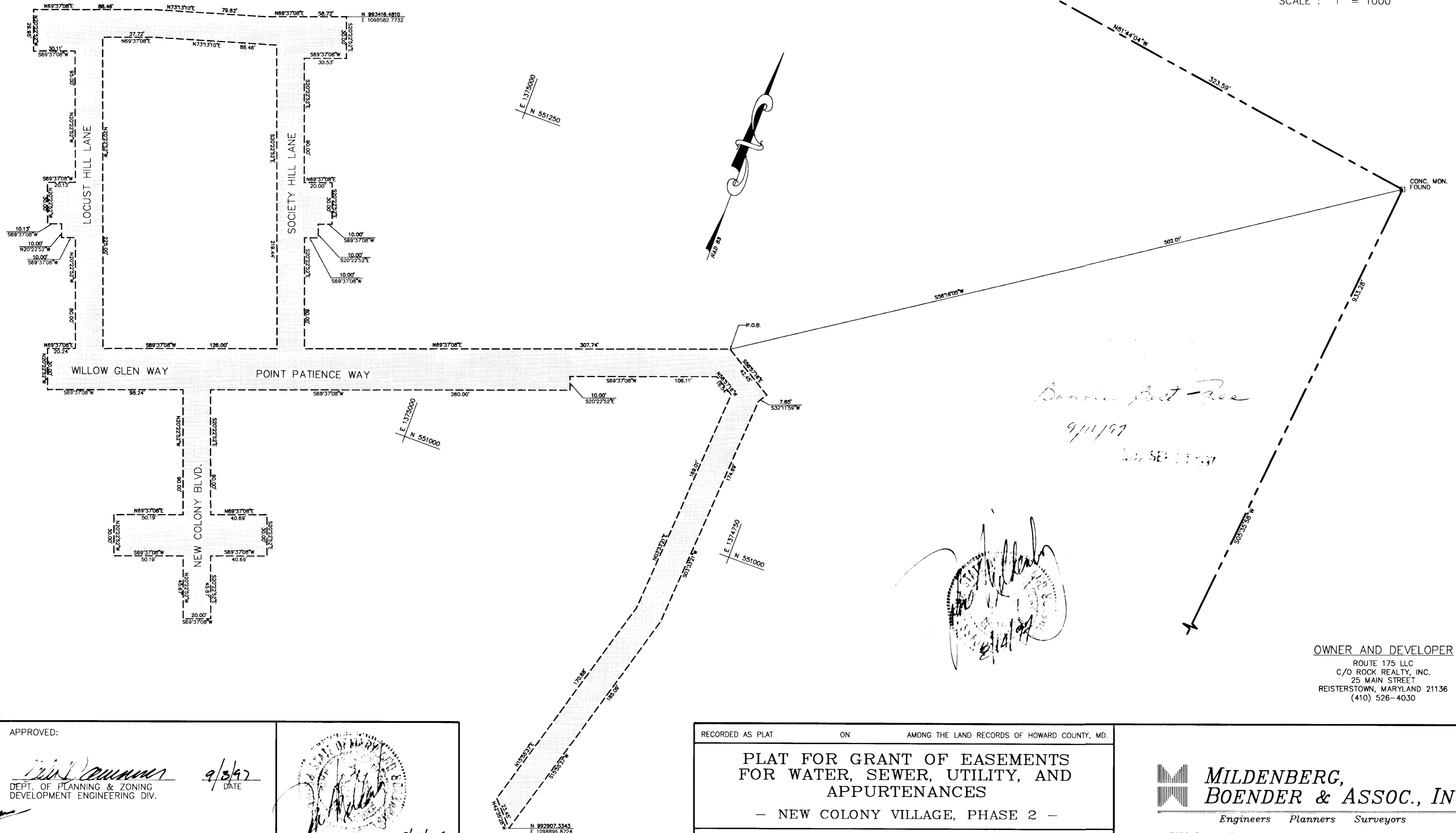
- BOUNDARY SHOWN HEREON IS BASED ON A FIELD RUN & MONUMENTED SURVEY ON OR ABOUT MARCH 1995 BY MILDENBERG, BOENDER & ASSOCIATES, INC., AND ON APPROVED SDP-96-20.
- HORIZONTAL AND VERTICAL DATUMS ARE RELATED TO THE MARYLAND STATE PLANE COORDINATE SYSTEM AS PROJECTED FROM HOWARD COUNTY CONTROL STATIONS NO. 43A1 AND 43A2.
 STATION 43A2 STATION 43A1
 NORTHING 550784.342654 NORTHING 552081.810532
 EASTING 1372040.182420 EASTING 1370625.809590
 ELEVATION 292.55 ELEVATION 306.79
-  DENOTES A WATER, SEWER, & UTILITY EASEMENT (42,693 SQ. FT. OR 0.98 ACRES).



OVERALL PARCEL CONFIGURATION PER LIBER 3769 FOLIO 305
SCALE: 1" = 400'



VICINITY MAP
SCALE: 1" = 1000'




OWNER AND DEVELOPER
 ROUTE 175 LLC
 C/O ROCK REALTY, INC.
 25 MAIN STREET
 REISTERSTOWN, MARYLAND 21136
 (410) 526-4030

94044/DWG/PHASE2/WS/EASEMENT

APPROVED:

[Signature] 9/3/97
 DEPT. OF PLANNING & ZONING
 DEVELOPMENT ENGINEERING DIV.
 DATE

[Signature] 9/9/97
 REAL ESTATE SER. DIV.
 DATE


 JOHN B. MILDENBERG
 PROFESSIONAL LAND SURVEYOR
 NO. 10718
 8/11/97

RECORDED AS PLAT ON AMONG THE LAND RECORDS OF HOWARD COUNTY, MD.

**PLAT FOR GRANT OF EASEMENTS
 FOR WATER, SEWER, UTILITY, AND
 APPURTENANCES**

— NEW COLONY VILLAGE, PHASE 2 —

TAX MAP 43 PARCEL NO. P/O 4 BLOCK 3 LOT N/A	ELECTION DISTRICT FIRST HOWARD COUNTY, MARYLAND EX. ZONING R-MH	SCALE: 1"=50' DATE: AUGUST 1997 DPZ FILE NOS. S-94-39; SDP-96-20; SDP-97-88; CONTRACT # 14-3627-D
--	---	---

**MILDENBERG,
 BOENDER & ASSOC., INC.**
 Engineers Planners Surveyors

5072 Dorsey Hall Drive, Suite 202, Ellicott City, Maryland 21042
 (410) 997-0296 Balt. (301) 621-5521 Wash. (410) 997-0298 Fax.