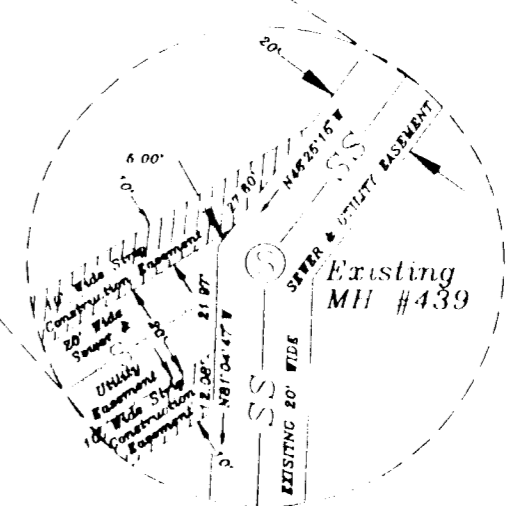
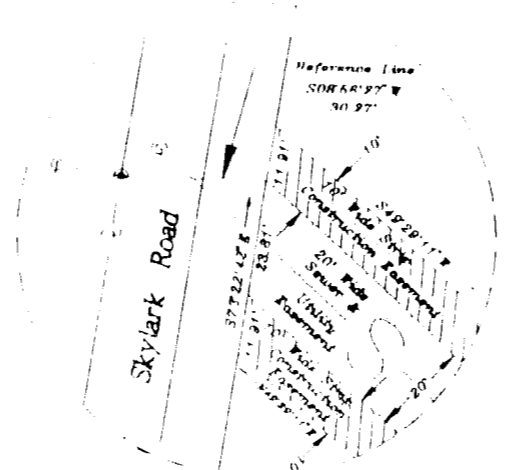


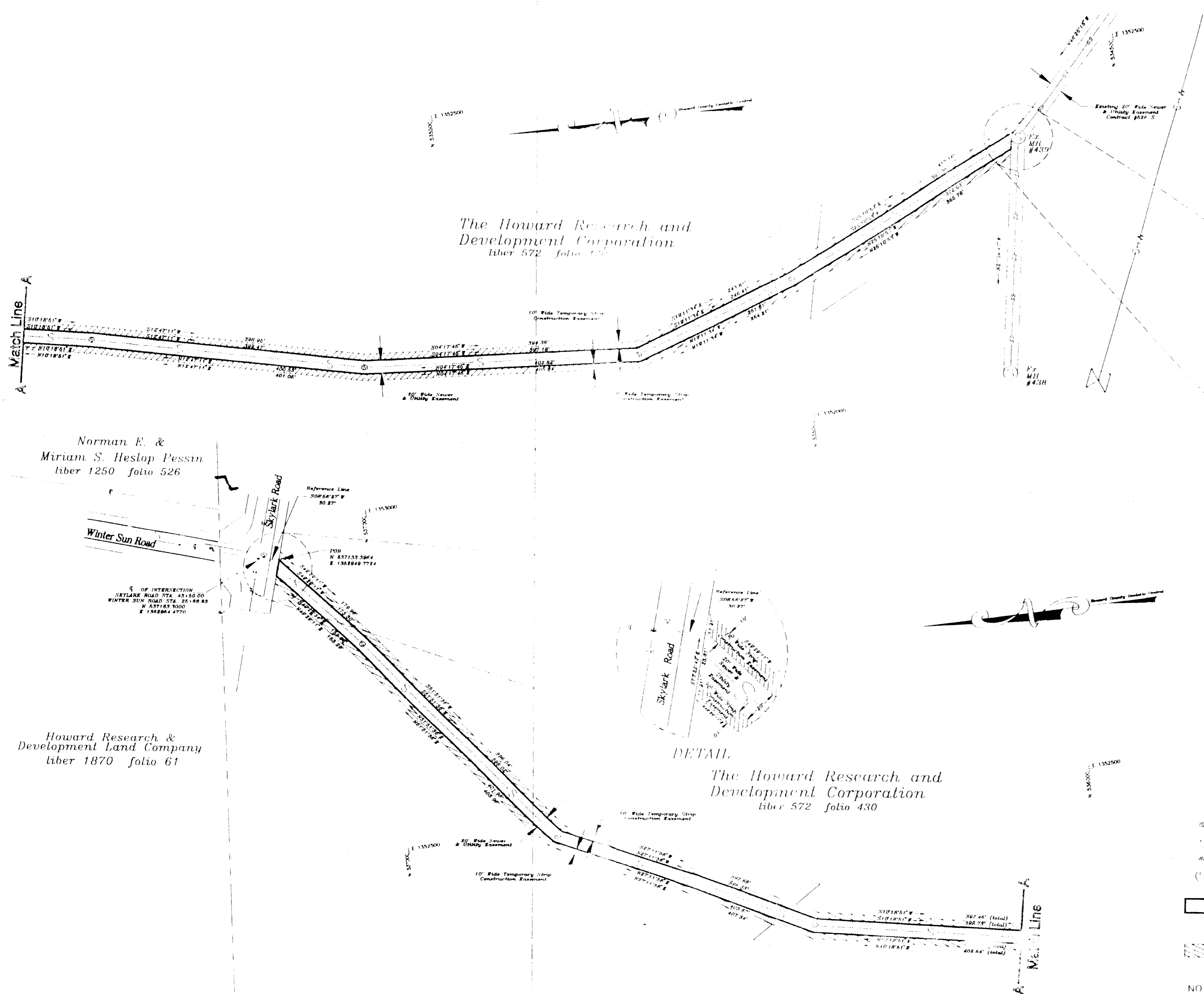
VICINITY MAP
SCALE: 1" = 1200'



DETAIL



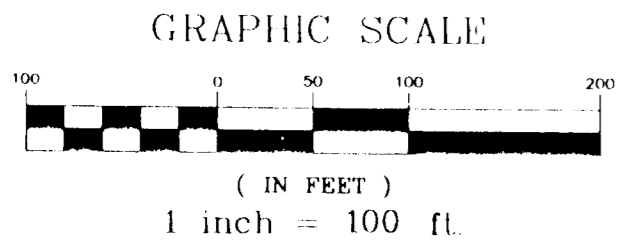
DETAIL



LEGEND

- ⊕ Proposed Sewer Manhole
- Proposed Sewer Line
- - - Existing Sewer Line
- ⊙ Existing Sewer Manhole
- ▭ 20' Wide Sewer & Utility Easement
Area = 1.283 Acres ± (55,881 Sq. Ft. ±)
- ▨ 10' Temporary Strip Construction Easement
Area = 1.286 Acres ± (56,008 Sq. Ft. ±)

NOTE: Coordinates shown hereon are based on values established by Howard County, Md. for the following Geodetic Control Stations (NAD83):
 STA: 42FA N 547,603.6748 E 1,355,440.3193
 STA: 47AB N 540,058.257 E 1,350,005.064



William A. Carroll
 WILLIAM A. CARROLL
 PROPERTY LINE SURVEYOR NO. 100

TO THE BEST OF MY KNOWLEDGE AND BELIEF I CERTIFY THIS PLAT TO BE CORRECT AS SHOWN.
William A. Carroll
 WILLIAM A. CARROLL
 PROPERTY LINE SURVEYOR NO. 100

DRAWN BY: Wm. Carroll
 SCALE: 1" = 100'

PLAT NO. 20-3516-S1
 CAPITAL PROJ. NO. 5-6204
 DATE: September 20, 1996
 SURVEYED: April 4, 1996

HOWARD COUNTY DEPARTMENT OF PUBLIC WORKS
 SEWER AND UTILITY EASEMENT
 PROPERTY OF
THE HOWARD RESEARCH AND DEVELOPMENT CORPORATION
 liber 572, folio 430
 ELECTION DISTRICT GUILFORD No. 6
 HOWARD COUNTY, MARYLAND

APPROVED:
 BUREAU OF ENGINEERING
Butler DATE *10/16/96*
 LAND ACQUISITION
 DATE *10/16/96*

C:\DWG\5664\025\1225