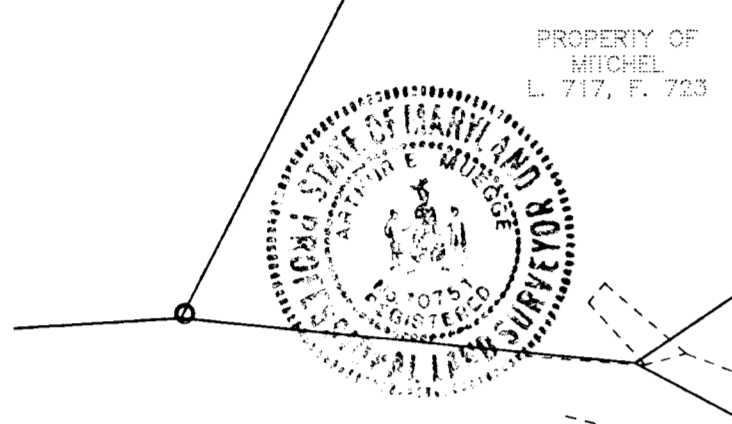
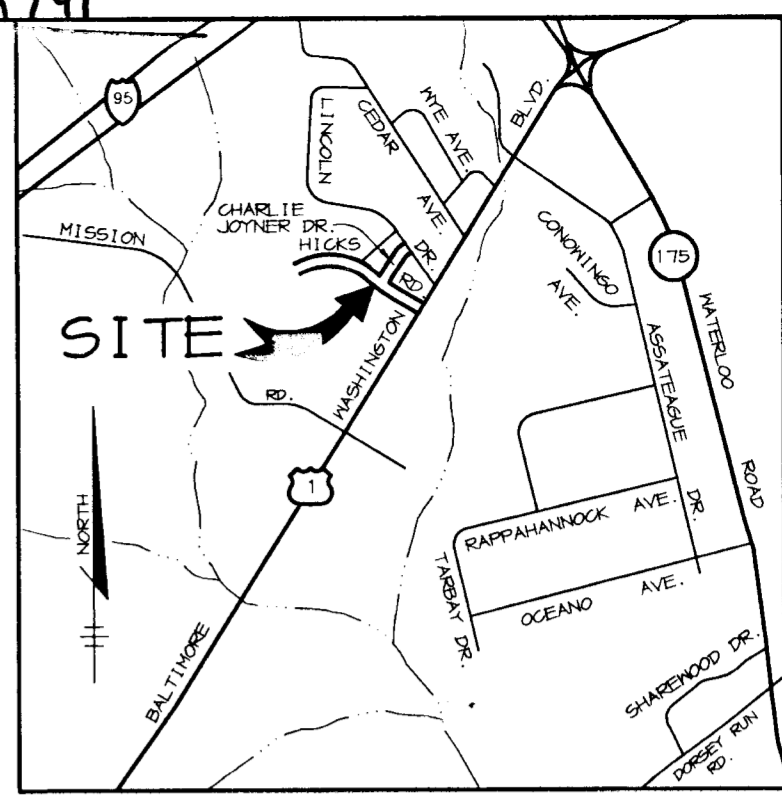


CURVE DATA

CURVE	RADIUS	LENGTH	TANGENT	CHORD	BEARING	DELTA
101-100	20.00'	31.28'	19.86'	28.14'	N 05°32'55" E	84°36'30"
103-102	265.00'	209.04'	106.83'	198.16'	N 28°23'54" E	43°54'40"
104-103	185.00'	56.80'	28.62'	56.80'	N 15°14'14" E	13°35'28"
105-104	20.00'	35.24'	24.24'	32.85'	N 34°30'23" E	100°56'42"
112-111	20.00'	28.31'	17.11'	26.01'	S 14°28'08" E	81°06'26"
113-112	215.00'	73.71'	37.22'	73.35'	S 16°15'52" E	14°38'35"
114-113	235.00'	180.10'	44.73'	175.73'	S 28°23'54" E	43°54'40"
116-115	20.00'	31.55'	20.14'	28.38'	N 64°21'08" E	40°23'22"

COORDINATE LIST

NO.	NORTH	EAST
100	546463.433	1371452.142
101	546435.377	1371444.417
102	546365.559	1371365.159
103	546191.246	1371270.914
104	546136.659	1371256.044
105	546128.417	1371226.312
107	546275.924	1370975.429
108	546266.048	1370968.547
109	545873.023	1371530.286
110	545894.048	1371562.864
111	546092.283	1371286.679
112	546117.465	1371280.182
113	546187.879	1371300.725
114	546342.459	1371384.300
115	546411.974	1371468.192
116	546409.230	1371496.439
120	546188.984	1371099.207
121	546209.350	1371110.638



THE REQUIREMENTS OF SECTION 3-108, THE REAL PROPERTY ARTICLE, ANNOTATED CODE OF MARYLAND, 1988 REPLACEMENT VOLUME (AS SUPPLEMENTED) AS FAR AS THEY RELATE TO THE MAKING OF THIS PLAT AND THE SETTING OF MARKERS HAVE BEEN COMPLIED WITH.

ARTHUR E. MUEGGE #10751 DATE

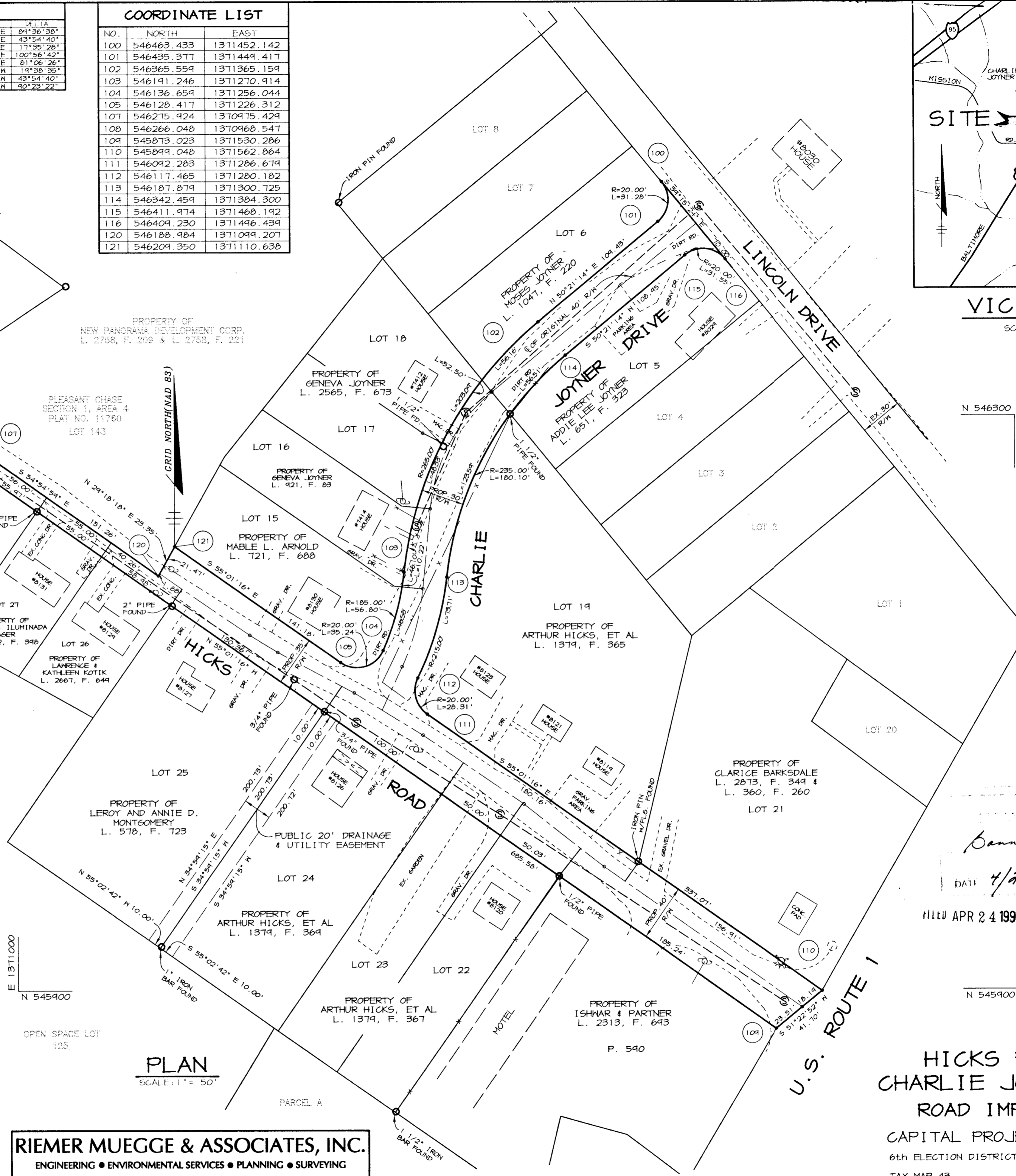
OPEN SPACE LOT 125

PLEASANT CHASE SECTION 1, PHASE 3, LOT 125, PARCEL A RESUBDIVISION OF ONE SPOT HEIGHTS, P.B. 3, FOLIO 36, LOT 9-12, 14 AND A RESUBDIVISION OF VILLA HEIGHTS, P.B. 3, FOLIO 45, BLK. 4, LOTS 4-8, BLK. D LOTS 608, BLK. E LOTS 1-8, BLK. F LOTS 1-4

LAND ACQUISITIONS FOR HICKS ROAD AND CHARLIE JOYNER DRIVE ROAD IMPROVEMENTS

OWNERS	LOT/PARCEL	AREA
ADDIE LEE JOYNER L. 651, F. 323	LOT 5	2,545 SQ. FT. OR 0.058 Ac.
MOSES JOYNER L. 1047, F. 220	LOT 6	3,192 SQ. FT. OR 0.073 Ac.
MABLE L. ARNOLD L. 721, F. 608	LOT 15	4,615 SQ. FT. OR 0.106 Ac.
GENEVA JOYNER L. 921, F. 83	LOT 16	715 SQ. FT. OR 0.016 Ac.
GENEVA JOYNER L. 2565, F. 673	LOT 17	294 SQ. FT. OR 0.007 Ac.
GENEVA JOYNER L. 2565, F. 673	LOT 18	348 SQ. FT. OR 0.008 Ac.
ARTHUR HICKS, ET AL L. 1379, F. 365	LOT 19	7,109 SQ. FT. OR 0.163 Ac.
CLARICE BARKSDALE L. 360, F. 260 & L. 2873, F. 340	LOT 21	2,635 SQ. FT. OR 0.061 Ac.
ARTHUR HICKS, ET AL L. 1379, F. 367	LOT 22	1,319 SQ. FT. OR 0.030 Ac.
ARTHUR HICKS, ET AL L. 1379, F. 367	LOT 23	1,351 SQ. FT. OR 0.031 Ac.
ARTHUR HICKS, ET AL L. 1379, F. 364	LOT 24	2,499 SQ. FT. OR 0.057 Ac.
LEROT AND ANNIE D. MONTGOMERY L. 578, F. 723	LOT 25	2,085 SQ. FT. OR 0.048 Ac.
LAWRENCE & KATHLEEN KOTIK L. 2667, F. 649	LOT 26	733 SQ. FT. OR 0.017 Ac.
MICHAEL & ILLUMINDA SAGER L. 2992, F. 398	LOT 27	655 SQ. FT. OR 0.015 Ac.
MARCUS & ROSIA PAGE L. 2742, F. 139	LOT 28	671 SQ. FT. OR 0.015 Ac.
ISHWAR & PARTNER L. 2313, F. 693	PARCEL 590	4,341 SQ. FT. OR 0.100 Ac.

* INCLUDES AREA OF PUBLIC DRAINAGE & UTILITY EASEMENT



PLAN
SCALE: 1" = 50'

RIEMER MUEGGE & ASSOCIATES, INC.
ENGINEERING • ENVIRONMENTAL SERVICES • PLANNING • SURVEYING
8818 Centre Park Drive, Columbia, Maryland 21045
tel 410.997.8900 fax 410.997.9282

ASSESSMENTS & TAXATION
HICKS ROAD AND CHARLIE JOYNER DRIVE
Bonnie Best-Jee
DATE 4/24/99 PLAT

FILED APR 24 1997

HICKS ROAD AND CHARLIE JOYNER DRIVE ROAD IMPROVEMENTS
CAPITAL PROJECT NO. J-4129.
6th ELECTION DISTRICT HOWARD COUNTY, MARYLAND
TAX MAP 43 BLOCK 14
SCALE: AS SHOWN DATE: 4/18/97 SHEET 1 OF 1
(M:\PROJECT\SURVEY\2\95H11350\EBASEREV.DWG)