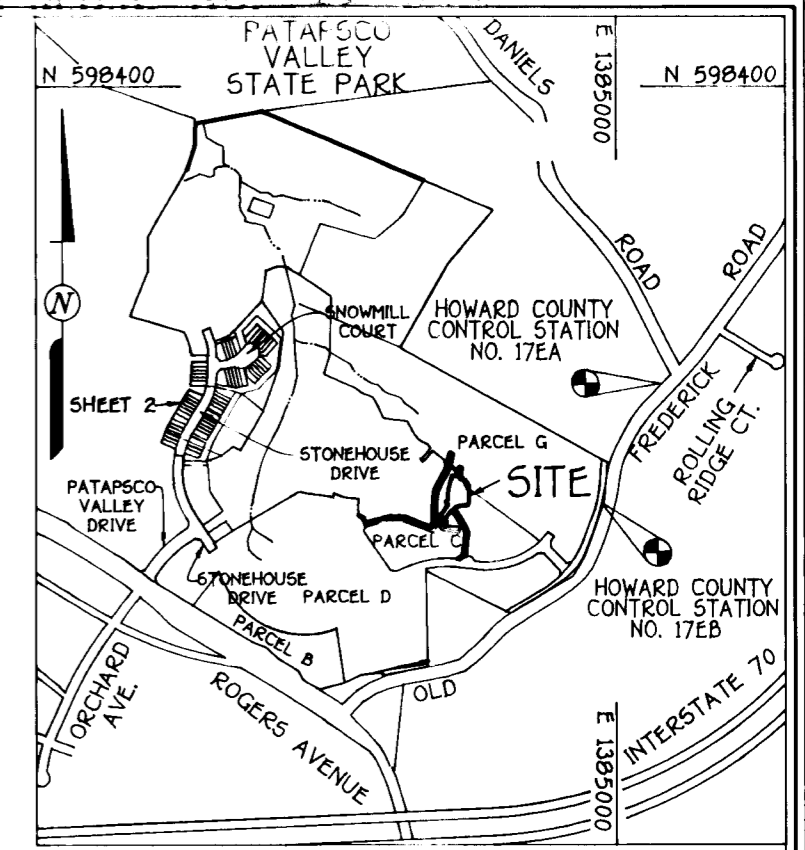
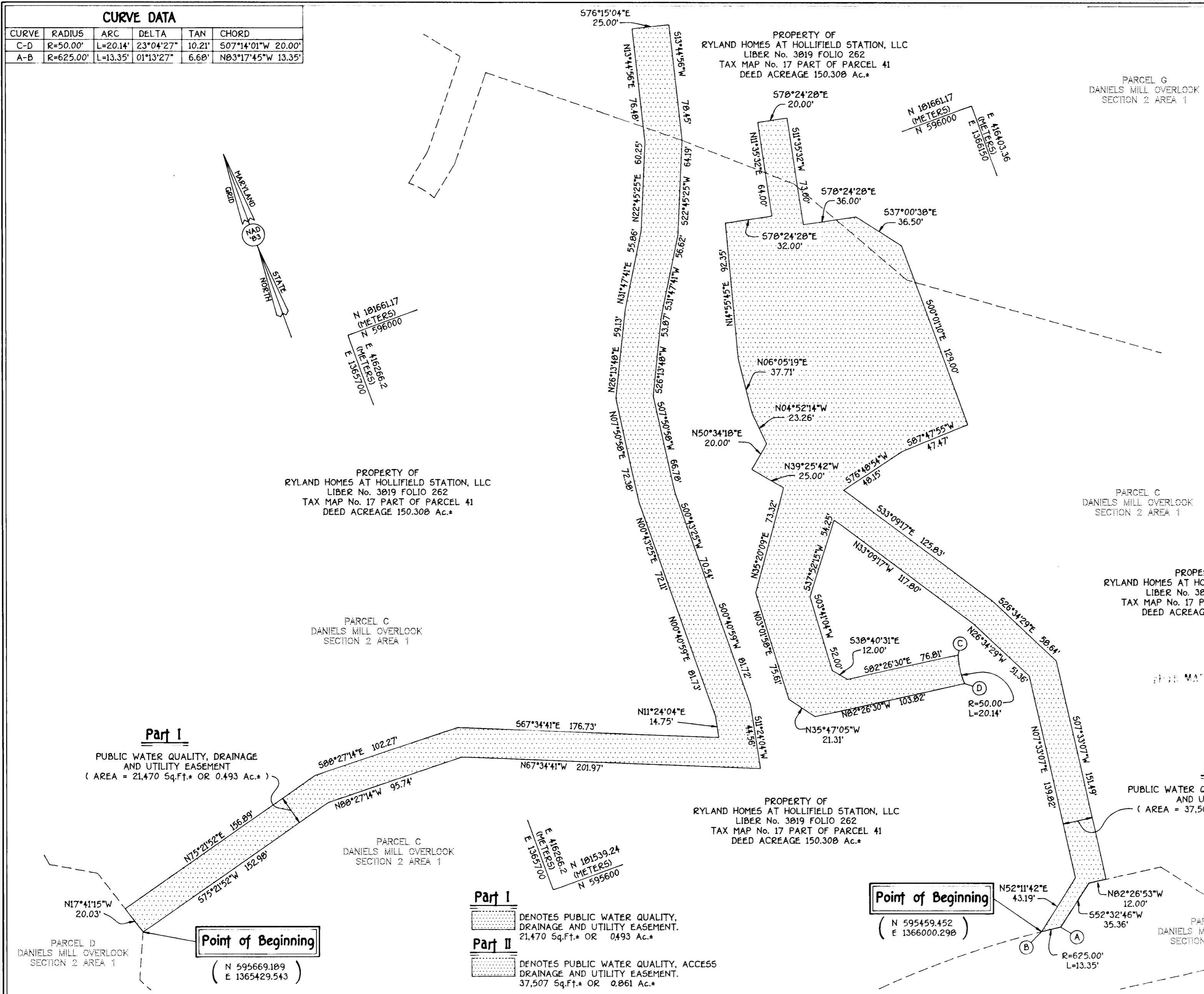


CURVE DATA					
CURVE	RADIUS	ARC	DELTA	TAN	CHORD
C-D	R=50.00'	L=20.14'	23°04'27"	10.21'	507°14'01"W 20.00'
A-B	R=625.00'	L=13.35'	01°13'27"	6.60'	N03°17'45"W 13.35'



VICINITY MAP
SCALE: 1" = 1200'



Part I
PUBLIC WATER QUALITY, DRAINAGE AND UTILITY EASEMENT
(AREA = 21,470 Sq.Ft. OR 0.493 Ac.*)

Part II
PUBLIC WATER QUALITY, ACCESS, DRAINAGE AND UTILITY EASEMENT
(AREA = 37,507 Sq.Ft. OR 0.861 Ac.*)

Point of Beginning
(N 595669.189
E 1365429.543)

Point of Beginning
(N 595459.452
E 1366000.290)

- Part I**
DENOTES PUBLIC WATER QUALITY, DRAINAGE AND UTILITY EASEMENT.
21,470 Sq.Ft.* OR 0.493 Ac.*
- Part II**
DENOTES PUBLIC WATER QUALITY, ACCESS DRAINAGE AND UTILITY EASEMENT.
37,507 Sq.Ft.* OR 0.861 Ac.*

Terrell A. Fisher 3/13/97
TERRELL A. FISHER, PROFESSIONAL LAND SURVEYOR No. 10692 DATE

FISHER, COLLINS & CARTER, INC.
CIVIL ENGINEERING CONSULTANTS & LAND SURVEYORS
CENTENNIAL SQUARE OFFICE PARK - 10272 BALTIMORE NATIONAL PIKE
ELLCOTT CITY, MARYLAND 21042
(410) 461-2855

PLAT NUMBER: F97-42-D-2
CONTRACT NUMBER: F97-42
SCALE: 1"=50'
DATE: MARCH 12, 1997
SHEET 1 OF 1

GRANT OF EASEMENT
THE UNDERSIGNED OWNER OF THE PROPERTY SHOWN AND DESCRIBED ON THE PLAT HEREBY GRANTS UNTO HOWARD COUNTY, MARYLAND, ITS SUCCESSORS AND ASSIGNS, THE RIGHT TO LAY, CONSTRUCT AND MAINTAIN SEWERS, DRAINS, WATER PIPES AND OTHER MUNICIPAL UTILITIES AND SERVICES, IN AND THROUGH THE SPECIFIC RESERVED EASEMENT AREAS AND ROADS SHOWN HEREON. IT IS AGREED THAT NO BUILDINGS OR SIMILAR STRUCTURES OF ANY KIND SHALL BE ERRECTED IN, ON OR OVER THE SAID RIGHT-OF-WAY AND EASEMENTS BY THE GRANTOR, ITS SUCCESSORS AND ASSIGNS, OR THE GRANTEE. IT IS AGREED THAT HOWARD COUNTY, MARYLAND IS IN NO WAY BOUND BY THE RECORDING OF THIS PLAT TO THE OWNERSHIP OF THE EASEMENT AREAS UNTIL SUCH TIME AS THE PUBLIC FACILITIES LOCATED WITHIN THE EASEMENT AREAS ARE ACCEPTED INTO THE PUBLIC SYSTEM BY HOWARD COUNTY, MARYLAND AND THE DEED OF EASEMENT AND AGREEMENT SIGNED BY THE GRANTOR HEREIN, IS RECORDED AMONG THE LAND RECORDS OF HOWARD COUNTY, MARYLAND. NEVERTHELESS GRANTOR HEREBY EXPRESSLY AGREES THAT ANY AND ALL SALES OF THE PROPERTY OR PROPERTIES DESCRIBED ON THIS PLAT PRIOR TO THE RECORDATION OF THE DEED OF EASEMENT AND AGREEMENT SHALL SPECIFICALLY REFER TO THIS PLAT AND SHALL BE MADE SUBJECT TO THE RESERVED EASEMENT GRANTED HEREIN.
BY: *James E. Joyce* DATE: 3-13-97
RYLAND HOMES AT HOLLIFIELD STATION, LLC
BY: JAMES E. JOYCE, VICE PRESIDENT
RYLAND HOMES AT HOLLIFIELD STATION, INC., MANAGING MEMBER
Wanda Brown
WITNESS DATE: 3-13-97

PLAT FOR GRANT OF EASEMENTS TO
HOWARD COUNTY MARYLAND
HOWARD COUNTY DEPARTMENT OF PUBLIC WORKS
PUBLIC WATER QUALITY, DRAINAGE AND UTILITY EASEMENT
AND
PUBLIC WATER QUALITY, ACCESS, DRAINAGE AND UTILITY EASEMENT
PROPERTY OF
RYLAND HOMES AT HOLLIFIELD STATION, LLC
SECOND ELECTION DISTRICT
HOWARD COUNTY, MARYLAND

RECORDED AS PLAT No. _____ ON _____
AMONG THE LAND RECORDS OF HOWARD COUNTY, MARYLAND
APPROVED: *Wanda Brown* 3/19/97
DEVELOPMENT ENGINEERING DIVISION DATE
APPROVED: *Tina D. Hackett* 3/18/97
LAND ACQUISITION DATE
DRAWN BY: _____
CHECKED BY: _____