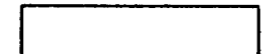
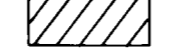
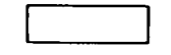
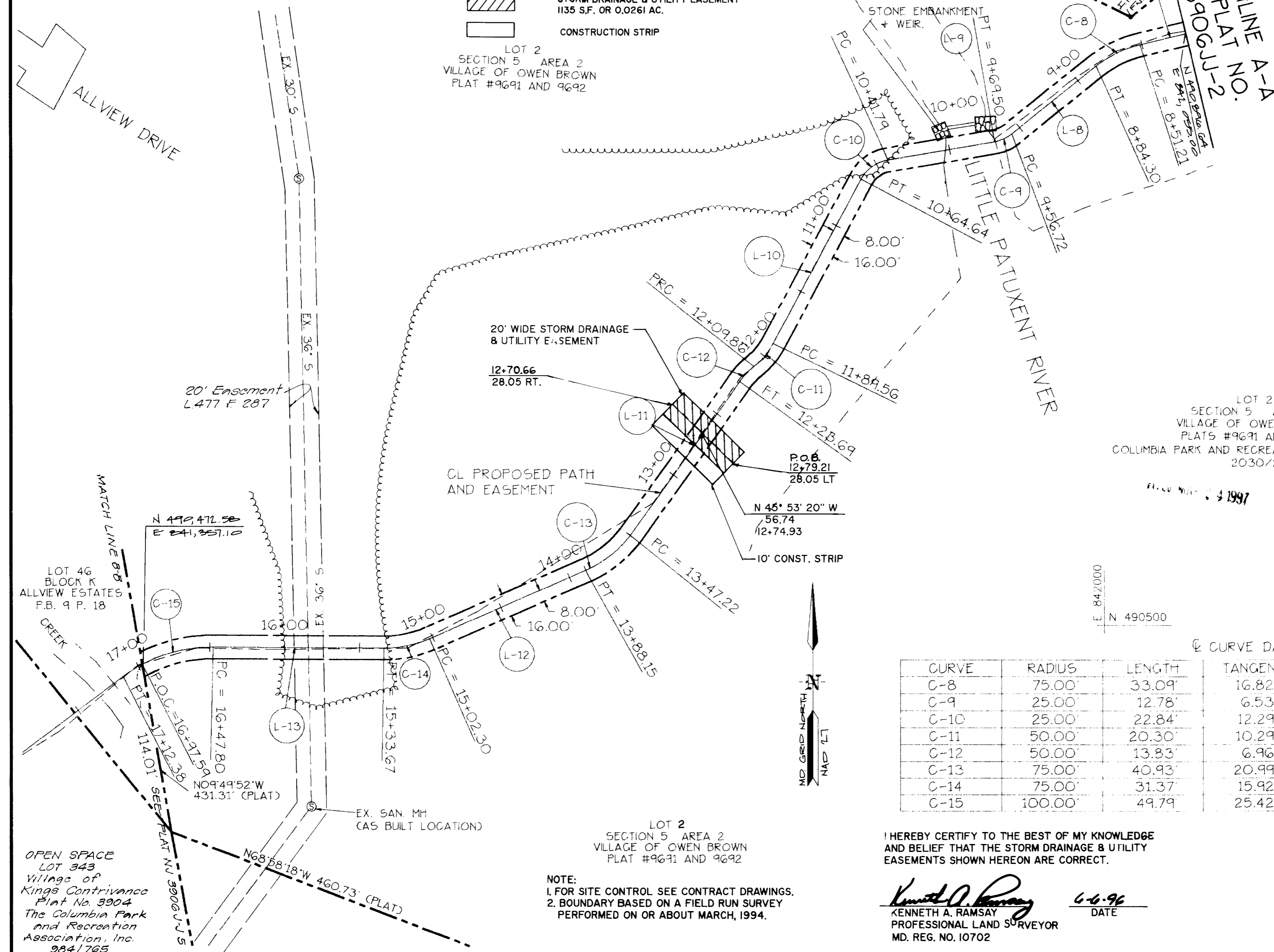
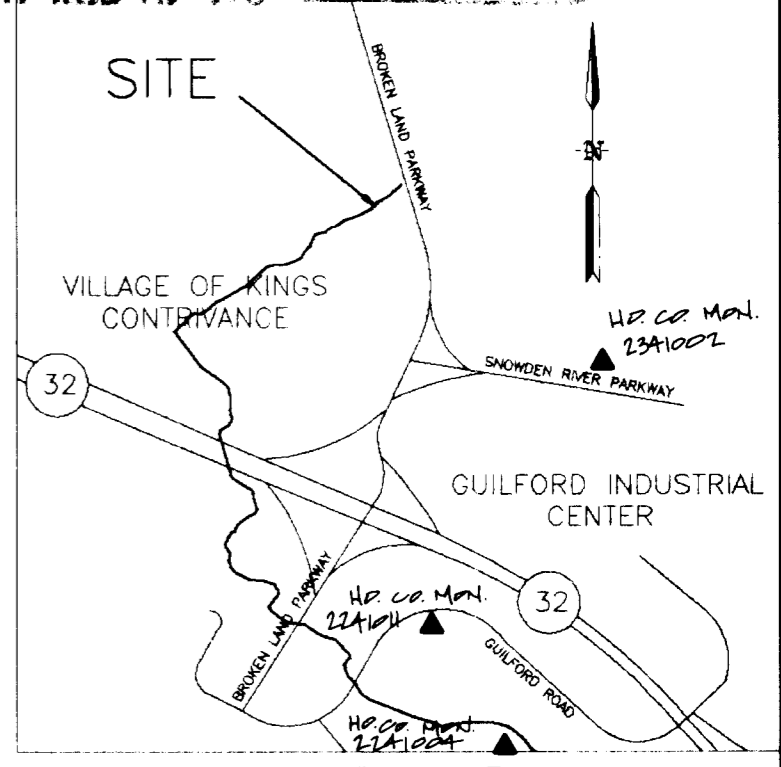


NOTE: COORDINATES SHOWN HEREON ARE BASED ON HOWARD COUNTY GEODETIC SYSTEM POINT NOS. 2341002 & 2241011, NAD 27 DATUM.

- LEGEND**
-  PATHWAY EASEMENT
27,162 S.F. OR 0.6235 AC. MORE OR LESS
TOTAL EASEMENT PLATS NO. N-3906JJ-2 & 3.
 -  STORM DRAINAGE & UTILITY EASEMENT
1135 S.F. OR 0.0261 AC.
 -  CONSTRUCTION STRIP
- LOT 2
SECTION 5 AREA 2
VILLAGE OF OWEN BROWN
PLAT #9691 AND 9692



LOT 2
SECTION 5 AREA 2
VILLAGE OF OWEN BROWN
PLATS #9691 AND 9692
COLUMBIA PARK AND RECREATION ASSOCIATION INC.
2030/247

LINE DATA

LINE	DIRECTION	DISTANCE
L-7	S76°21'24"W	31.63'
L-8	S51°04'42"W	72.42'
L-9	S80°22'28"W	72.29'
L-10	S28°01'26"W	124.92'
L-11	S35°26'24"W	123.53'
L-12	S66°10'39"W	114.15'
L-13	N89°51'19"W	114.13'

CURVE DATA

CURVE	RADIUS	LENGTH	TANGENT	CHORD	BEARING	DELTA
C-8	75.00'	33.09'	16.82'	32.82'	S63°43'03"W	25°16'42"
C-9	25.00'	12.78'	6.53'	12.64'	S65°43'35"W	29°17'46"
C-10	25.00'	22.84'	12.29'	22.06'	S54°11'57"W	52°21'03"
C-11	50.00'	20.30'	10.29'	20.16'	S39°39'25"W	23°15'58"
C-12	50.00'	13.83'	6.96'	13.79'	S43°21'54"W	15°51'01"
C-13	75.00'	40.93'	20.99'	40.42'	S50°32'42"W	31°15'53"
C-14	75.00'	31.37'	15.92'	31.14'	S78°09'40"W	23°58'02"
C-15	100.00'	49.79'	25.42'	49.28'	S75°52'47"W	28°31'47"

NOTE:
1. FOR SITE CONTROL SEE CONTRACT DRAWINGS.
2. BOUNDARY BASED ON A FIELD RUN SURVEY PERFORMED ON OR ABOUT MARCH, 1994.

I HEREBY CERTIFY TO THE BEST OF MY KNOWLEDGE AND BELIEF THAT THE STORM DRAINAGE & UTILITY EASEMENTS SHOWN HEREON ARE CORRECT.

Kenneth A. Ramsay
KENNETH A. RAMSAY
PROFESSIONAL LAND SURVEYOR
MD. REG. NO. 10702

6-6-96
DATE

TO THE BEST OF MY KNOWLEDGE AND BELIEF I CERTIFY:

Warren W. Sorrell
WARREN W. SORRELL
PROFESSIONAL LAND SURVEYOR MD. NO. 10858

3/21/94
DATE

OPEN SPACE
LOT 343
Village of Kings Contrivance
Plat No. 3904
The Columbia Park and Recreation Association, Inc.
984/765

No.	REVISION	BY	DATE
#1	ADD STORM DRAINAGE EASEMENT	G.W.D.	05-96
#2	REVISE LOT NOS. & PATHWAY STATIONING	C.W.D.	07-96

PLAT NO. N-3906JJ-3
CAPITAL PROJ. NO. N-3906JJ
SCALE: 1"=50'
DATE: FEB., 1994

HOWARD COUNTY DEPARTMENT OF PUBLIC WORKS
PATHWAY EASEMENT
COLUMBIA ASSOCIATION, INC.
LOT 2 SECTION 5 AREA 2
VILLAGE OF OWEN BROWN
TAX MAP 36 PARCEL 402 LIBER 2030 FOLIO 247
6TH. ELECTION DISTRICT HOWARD COUNTY, MARYLAND

APPROVED
REAL ESTATE SER. DIV.
Jana D. Hackett 3/12/97
BUR. OF ENGINEERING
Kenneth E. Chas 4/4/97

PREPARED BY:
gpi
GREENMAN-PEDERSEN INC.
ENGINEERS/ARCHITECTS/PLANNERS/SURVEYORS
14504 GREENVIEW DRIVE, SUITE 100
LAUREL, MD. 20708
WASH. (301) 470-2772 BALT. (410) 880-3055
DRAWN BY: NB & C.L.I.
CHECKED BY: W.W.S.