

VICINITY MAP  
SCALE: 1" = 2000'

N 490,500  
E 840,500

LINE DATA

LINE	DIRECTION	DISTANCE
L-1	S53°08'50"W	47.00'
L-2	S45°38'00"W	161.29'
L-3	S60°03'00"W	268.22'
L-4	S71°57'39"W	34.47'
L-5	S48°14'10"W	92.77'
L-6	S85°01'20"W	33.95'
L-7	S43°54'17"W	123.71'
L-8	S56°17'21"W	60.89'
L-9	S41°59'03"W	50.05'

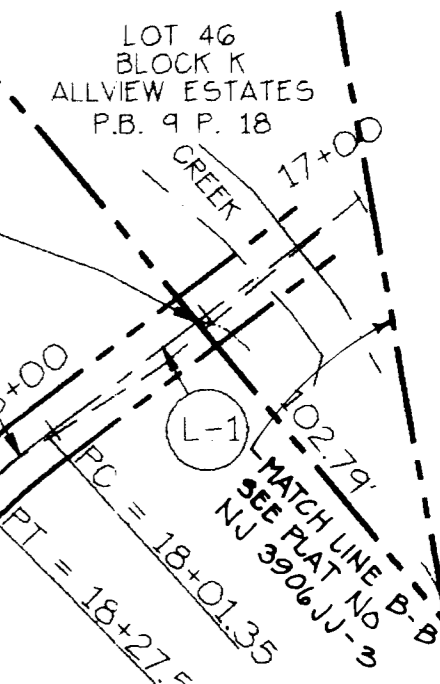
CURVE DATA

CURVE	RADIUS	LENGTH	TANGENT	CHORD	BEARING	DELTA
C-1	200.00'	26.23'	13.13'	26.21'	S49°23'25"W	07°30'51"
C-2	175.00'	44.03'	22.13'	43.92'	S52°50'30"W	14°25'00"
C-3	100.00'	20.79'	10.43'	20.75'	S66°00'19"W	11°54'39"
C-4	50.00'	20.70'	10.50'	20.56'	S60°05'54"W	23°43'29"
C-5	200.00'	128.41'	66.50'	126.21'	S66°37'45"W	36°47'11"
C-6	50.00'	35.88'	18.75'	35.12'	S64°27'49"W	41°07'03"
C-7	50.00'	10.81'	5.42'	10.79'	S50°05'49"W	12°23'04"
C-8	75.00'	18.73'	9.41'	18.68'	S49°08'12"W	14°18'17"
C-9	30.00'	46.71'	29.59'	42.13'	S11°40'57"W	89°12'47"

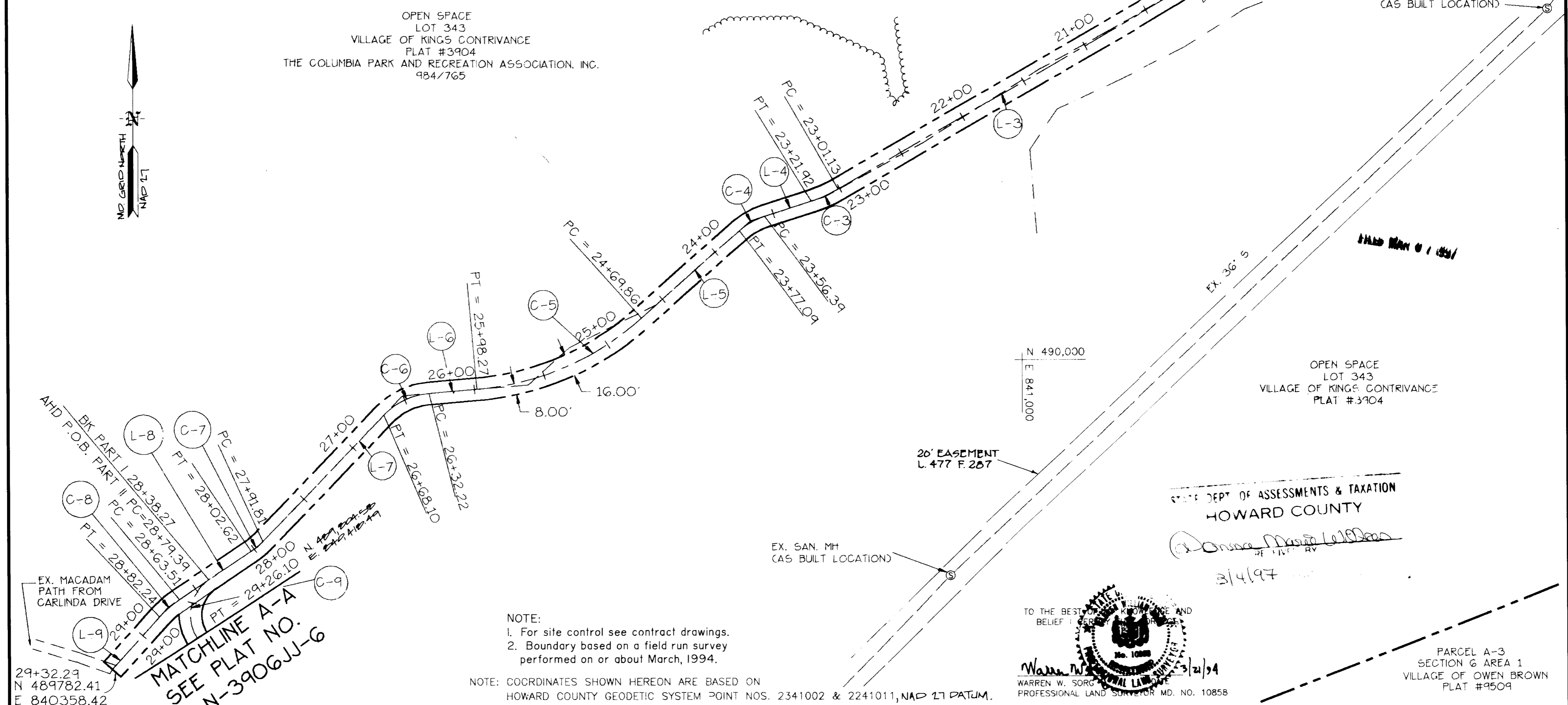
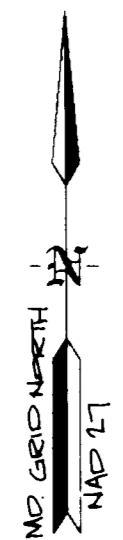
N 490,500  
E 841,000

LEGEND

PATHWAY EASEMENT:  
PART I  
18,847 S.F. OR 0.4327 AC. MORE OR LESS  
PART II  
19,708 S.F. OR 0.4524 AC. MORE OR LESS



OPEN SPACE  
LOT 343  
VILLAGE OF KINGS CONTRIVANCE  
PLAT #3904  
THE COLUMBIA PARK AND RECREATION ASSOCIATION, INC.  
9847765



N 490,000  
E 841,000

OPEN SPACE  
LOT 343  
VILLAGE OF KINGS CONTRIVANCE  
PLAT #3904

STATE DEPT. OF ASSESSMENTS & TAXATION  
HOWARD COUNTY

*Donna Marie Wilson*  
3/4/97

TO THE BEST OF MY KNOWLEDGE AND BELIEF I AM A  
WARREN W. SORG  
PROFESSIONAL LAND SURVEYOR MD. NO. 10858  
3/21/97

PARCEL A-3  
SECTION 6 AREA 1  
VILLAGE OF OWEN BROWN  
PLAT #9509

NOTE:  
1. For site control see contract drawings.  
2. Boundary based on a field run survey performed on or about March, 1994.

NOTE: COORDINATES SHOWN HEREON ARE BASED ON HOWARD COUNTY GEODETIC SYSTEM POINT NOS. 2341002 & 2241011, NAD 27 DATUM.

29+32.29  
N 489782.41  
E 840358.42

MATCHLINE A-A  
SEE PLAT NO.  
N-3906JJ-6

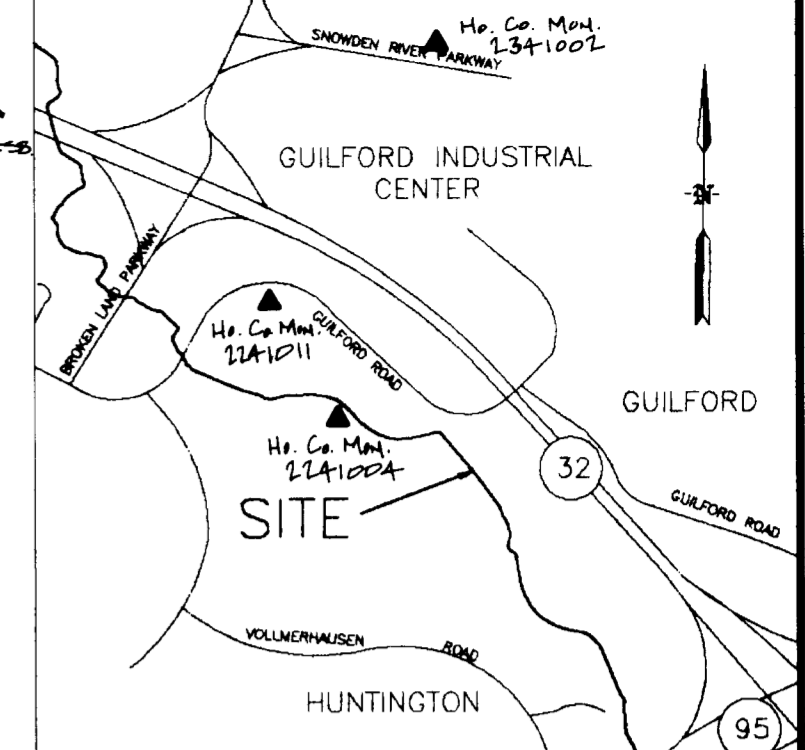
No.	REVISION	BY	DATE	PLAT NO. N-3906JJ-5	HOWARD COUNTY DEPARTMENT OF PUBLIC WORKS PATHWAY EASEMENT	APPROVED REAL ESTATE SER. DIV. <i>Tina D. Hackett</i> 3/21/97 DATE	PREPARED BY:
				CAPITAL PROJ. NO. N-3906JJ	COLUMBIA ASSOCIATION, INC. LOT 343 VILLAGE OF KINGS CONTRIVANCE SECTION 1 AREA1 TAX MAP 42 PARCEL 402 LIBER 984 FOLIO 765 6TH. ELECTION DISTRICT	BUR. OF ENGINEERING <i>Warren W. Sorg</i> 3/21/97 DATE	GREENMAN-PEDERSEN INC. ENGINEERS/ARCHITECTS/PLANNERS/SURVEYORS 14504 GREENVIEW DRIVE, SUITE 100 LAUREL, MD. 20708 WASH. (301) 470-2772 BALT. (410) 880-3055
				SCALE: 1"=50'			DRAWN BY: NB & C.L.I.
				DATE: FEB., 1994			CHECKED BY: W.W.S.

NOTE: COORDINATES SHOWN HEREON ARE BASED ON HOWARD COUNTY GEODETIC SYSTEM POINT NOS. 2341002 & 2241011, NAD 27 DATUM.

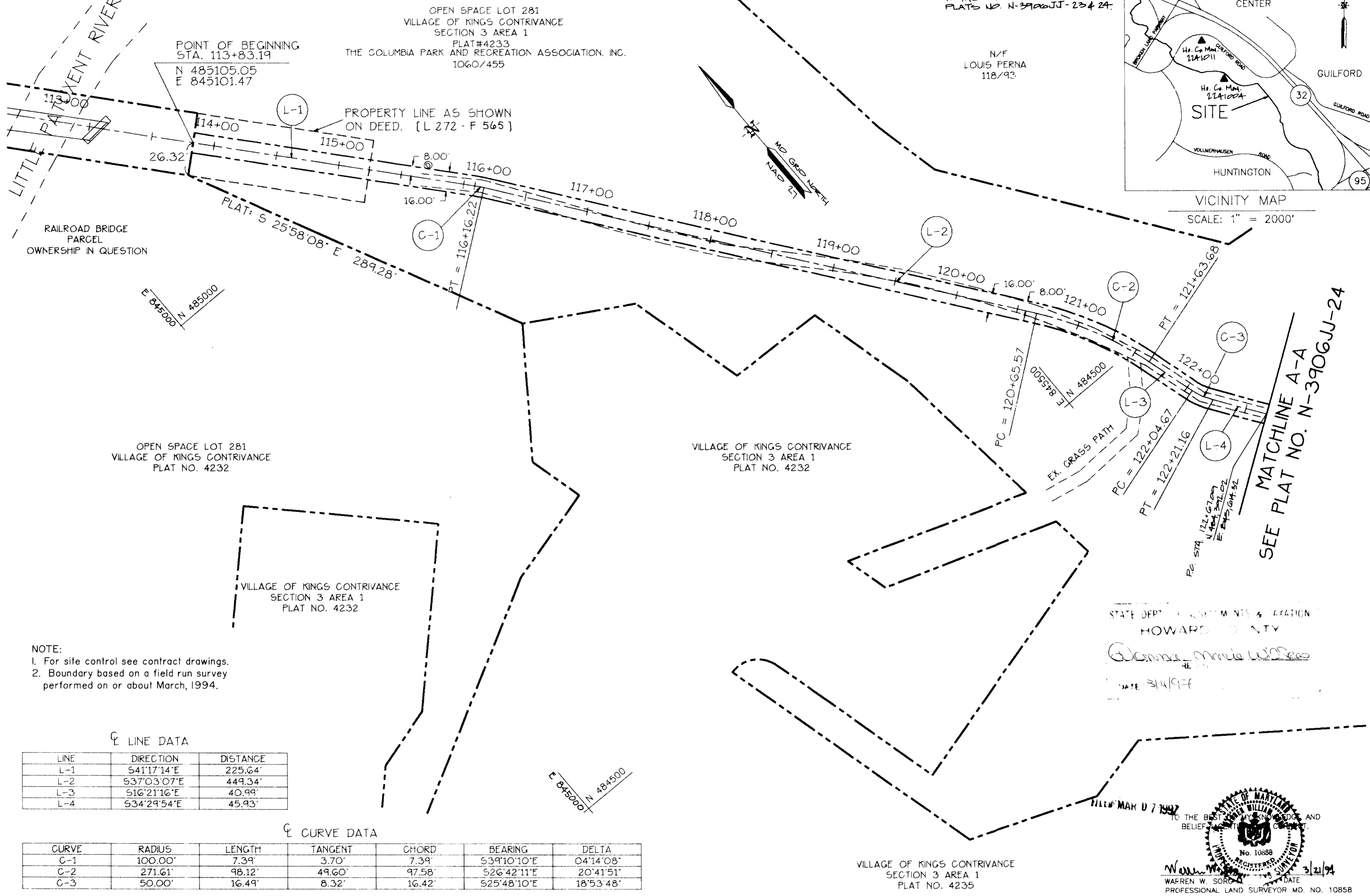
LEGEND

PATHWAY EASEMENT:  
26,049 S.F. OR 0.5980 AC. MORE OR LESS  
TOTAL EASEMENT  
PLATS NO. N-3906JJ-23 & 24.

N/F  
LOUIS PERNA  
118/92.



VICINITY MAP  
SCALE: 1" = 2000'



NOTE:  
1. For site control see contract drawings.  
2. Boundary based on a field run survey performed on or about March, 1994.

LINE DATA

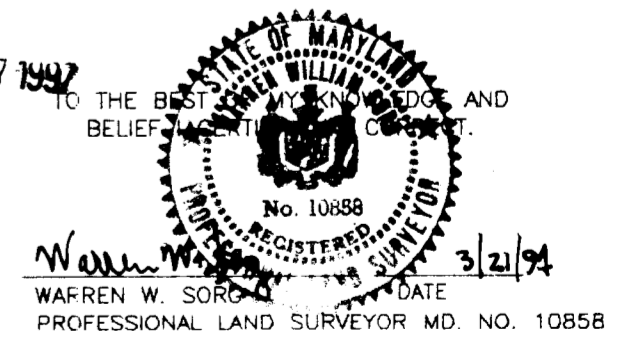
LINE	DIRECTION	DISTANCE
L-1	S41°17'14"E	225.64'
L-2	S37°03'07"E	449.34'
L-3	S16°21'16"E	40.99'
L-4	S34°29'54"E	45.93'

CURVE DATA

CURVE	RADIUS	LENGTH	TANGENT	CHORD	BEARING	DELTA
C-1	100.00'	7.39'	3.70'	7.39'	S39°10'10"E	04°14'08"
C-2	271.61'	98.12'	49.60'	97.58'	S26°42'11"E	20°41'51"
C-3	50.00'	16.49'	8.32'	16.42'	S25°48'10"E	18°53'48"

STATE DEPT. OF PUBLIC WORKS & TAXATION  
HOWARD COUNTY



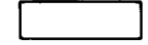
*Warren W. Soroka*  
DATE 3/14/94

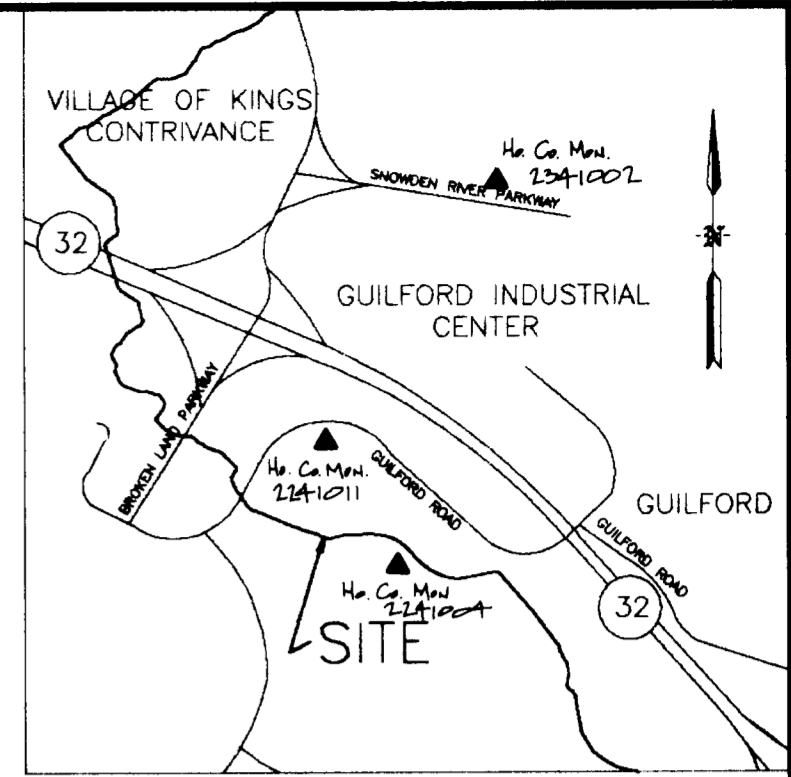


VILLAGE OF KINGS CONTRIVANCE  
SECTION 3 AREA 1  
PLAT NO. 4235

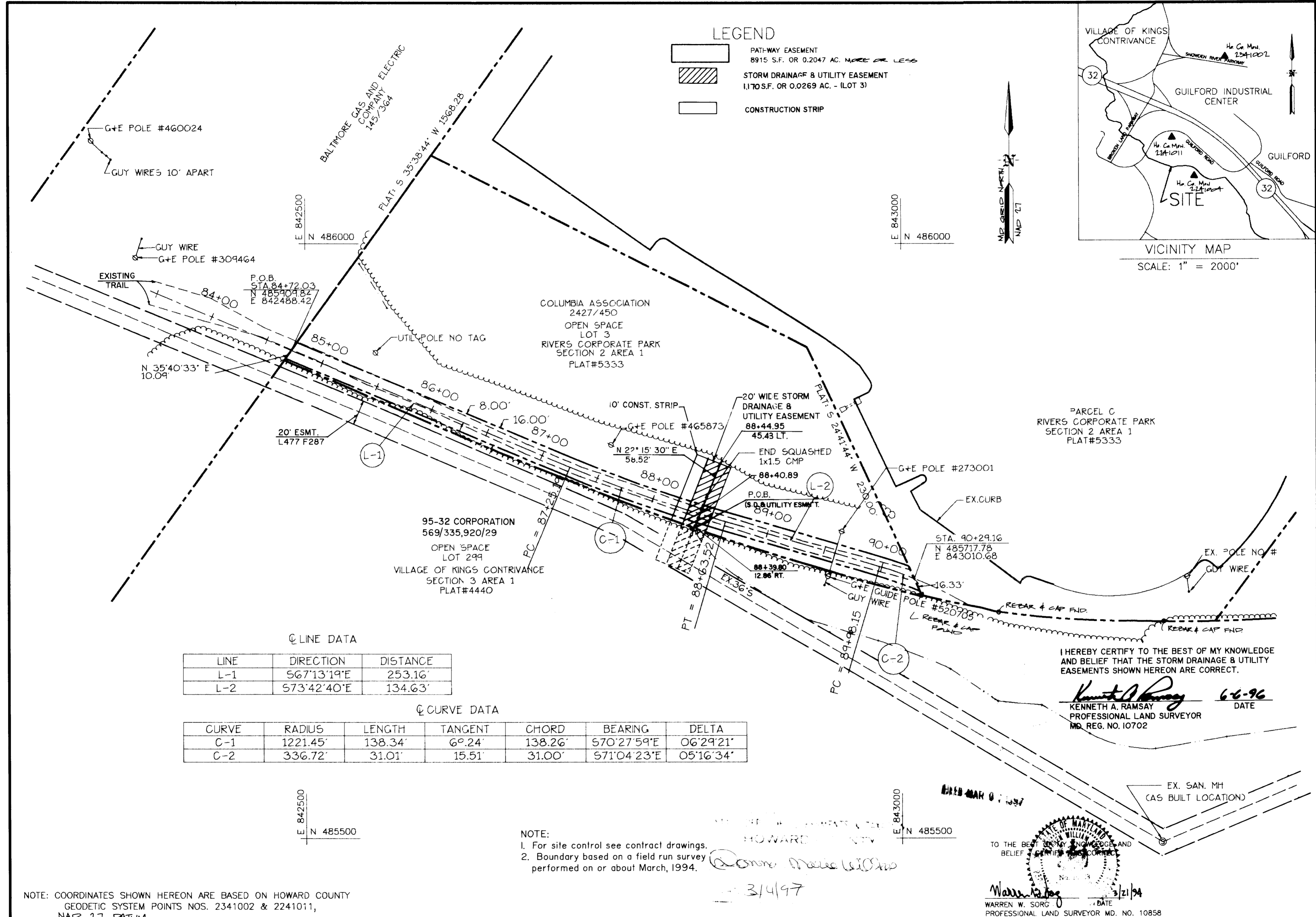
No.	REVISION	BY	DATE	PLAT NO. N-3906JJ-23	HOWARD COUNTY DEPARTMENT OF PUBLIC WORKS PATHWAY EASEMENT	APPROVED REAL ESTATE SER. DIV. <i>Tina D. Hackett 2/21/97</i> DATE	PREPARED BY: <b>gpi</b>	GREENMAN-PEDERSEN INC. ENGINEERS/ARCHITECTS/PLANNERS/SURVEYORS 14504 GREENVIEW DRIVE, SUITE 100 LAUREL, MD. 20708 WASH. (301) 470-2772 BALT. (410) 880-3055
				CAPITAL PROJ. NO. N-3906JJ	THE COLUMBIA PARK AND RECREATION ASSOCIATION, INC. LOT 28 VILLAGE OF KINGS CONTRIVANCE SECTION 3 AREA 1 TAX MAP 43 PARCEL 437 LIBER 1060 FOLIO 455	<i>Kenneth Church 2/21/97</i> DATE		DRAWN BY: NB & C.L.i. CHECKED BY: W.W.S.
				SCALE: 1" = 50' DATE: FEB., 1994	6TH. ELECTION DISTRICT			FILE=3906JJ23 P. 154

LEGEND

-  PATH-WAY EASEMENT  
8915 S.F. OR 0.2047 AC. MORE OR LESS
-  STORM DRAINAGE & UTILITY EASEMENT  
11,705 S.F. OR 0.269 AC. - (LOT 3)
-  CONSTRUCTION STRIP



VICINITY MAP  
SCALE: 1" = 2000'



LINE DATA

LINE	DIRECTION	DISTANCE
L-1	S67°13'19"E	253.16'
L-2	S73°42'40"E	134.63'

CURVE DATA

CURVE	RADIUS	LENGTH	TANGENT	CHORD	BEARING	DELTA
C-1	1221.45'	138.34'	6°24'	138.26'	S70°27'59"E	06°29'21"
C-2	336.72'	31.01'	15.51'	31.00'	S71°04'23"E	05°16'34"

I HEREBY CERTIFY TO THE BEST OF MY KNOWLEDGE AND BELIEF THAT THE STORM DRAINAGE & UTILITY EASEMENTS SHOWN HEREON ARE CORRECT.

*Kenneth A. Ramsay* 6-6-96  
KENNETH A. RAMSAY  
PROFESSIONAL LAND SURVEYOR  
MD. REG. NO. 10702

NOTE:  
1. For site control see contract drawings.  
2. Boundary based on a field run survey performed on or about March, 1994.

WARREN W. SORG  
PROFESSIONAL LAND SURVEYOR MD. NO. 10858  
DATE 3/21/94

NOTE: COORDINATES SHOWN HEREON ARE BASED ON HOWARD COUNTY GEODETIC SYSTEM POINTS NOS. 2341002 & 2241011, NAD 87 DATUM.

No.	REVISION	BY	DATE	PLAT NO. N-3906JJ-15 CAPITAL PROJ. NO. N-3906JJ SCALE: 1"=50' DATE: MARCH, 1994	HOWARD COUNTY DEPARTMENT OF PUBLIC WORKS PATHWAY EASEMENT COLUMBIA ASSOCIATION, INC. LOT 3 RIVERS CORPORATE PARK SECTION 2 AREA 1 TAX MAP 42 PARCEL 67 LIBER 2427 FOLIO 450 6TH. ELECTION DISTRICT HOWARD COUNTY, MARYLAND	APPROVED REAL ESTATE SER. DIV. <i>Tom D. Hackett</i> 2/21/97 DATE BUR. OF ENGINEERING <i>Kenneth A. Ramsay</i> 2/21/97 DATE	PREPARED BY: <b>gpi</b> GREENMAN-PEDERSEN INC. ENGINEERS/ARCHITECTS/PLANNERS/SURVEYORS 14504 GREENVIEW DRIVE, SUITE 100 LAUREL, MD. 20708 WASH. (301) 470-2772 BALT. (410) 880-3055 DRAWN BY: NB & C.L.I. CHECKED BY: W.W.S.
#1	ADD STORM DRAINAGE EASEMENT	G.W.D.	05-96				