

NOTE: COORDINATES SHOWN HEREON ARE BASED ON HOWARD COUNTY GEODETIC SYSTEM POINT NOS. 2341002 & 2241011, NAD 27 DATUM.


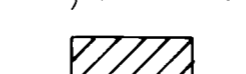
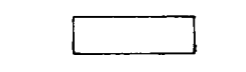

LINE DATA

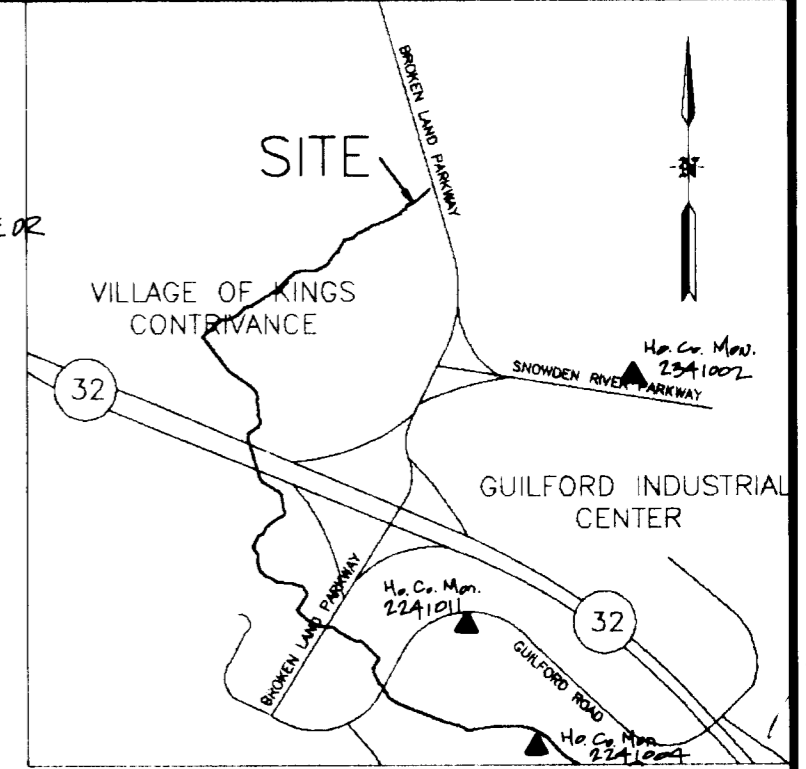
LINE	DIRECTION	DISTANCE
L-1	S47°44'05"W	155.39'
L-2	S64°09'44"W	71.48'
L-3	S49°06'34"W	32.99'
L-4	S63°19'05"W	82.60'
L-5	S71°13'17"W	106.81'
L-6	S57°56'29"W	76.16'

CURVE DATA

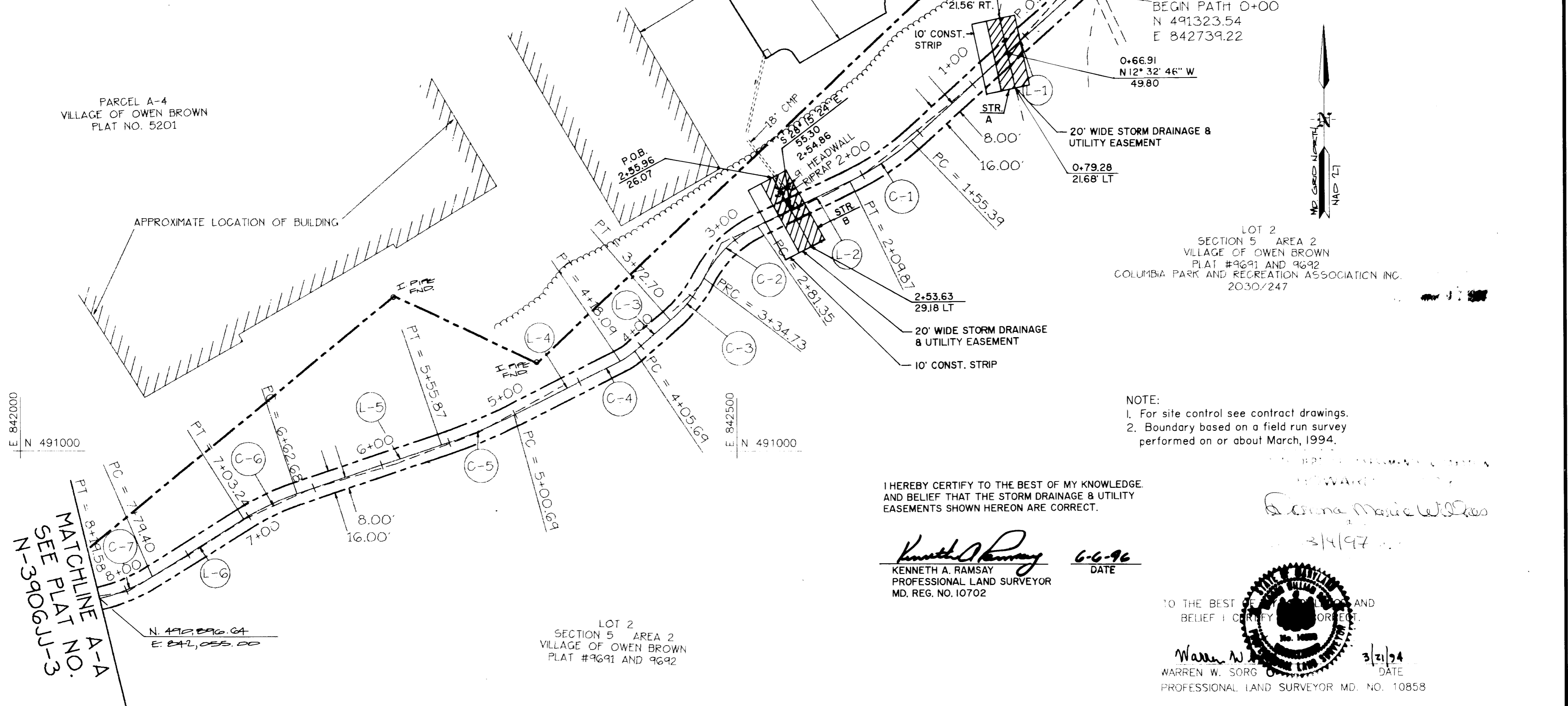
CURVE	RADIUS	LENGTH	TANGENT	CHORD	BEARING	DELTA
C-1	190.00'	54.48'	27.43'	54.29'	S55°56'55"W	16°25'39"
C-2	83.10'	53.38'	27.65'	52.47'	S45°45'34"W	36°48'20"
C-3	100.00'	37.97'	19.21'	37.74'	S38°13'59"W	21°45'10"
C-4	50.00'	12.40'	6.23'	12.37'	S56°12'50"W	14°12'31"
C-5	400.00'	55.18'	27.63'	55.13'	S67°16'11"W	07°54'12"
C-6	175.00'	40.56'	20.37'	40.47'	S64°34'53"W	13°16'48"
C-7	125.00'	40.18'	20.26'	40.00'	S67°08'56"W	18°24'55"

LEGEND

-  PATHWAY EASEMENT  
2,7162 S.F. OR 0.6235 AC. MORE OR LESS, TOTAL EASEMENT
-  PLATS NO. N-3906JJ-2 & 3.
-  STORM DRAINAGE & UTILITY EASEMENT  
996 S.F. OR 0.0229 AC. - STR.-A  
1106 S.F. OR 0.0254 AC. - STR.-B
-  CONSTRUCTION STRIP



VICINITY MAP  
SCALE: 1" = 2000'



- NOTE:
1. For site control see contract drawings.
  2. Boundary based on a field run survey performed on or about March, 1994.

I HEREBY CERTIFY TO THE BEST OF MY KNOWLEDGE AND BELIEF THAT THE STORM DRAINAGE & UTILITY EASEMENTS SHOWN HEREON ARE CORRECT.

*Kenneth A. Ramsay* 6-6-96  
 KENNETH A. RAMSAY  
 PROFESSIONAL LAND SURVEYOR  
 MD. REG. NO. 10702

TO THE BEST OF MY KNOWLEDGE AND BELIEF I CERTIFY THIS IS CORRECT.  
*Warren W. Sorg* 3/21/94  
 WARREN W. SORG  
 PROFESSIONAL LAND SURVEYOR MD. NO. 10858

No.	REVISION	BY	DATE
1	ADD STORM DRAINAGE EASEMENT	G.W.D.	05-96

PLAT NO. N-3906JJ-2  
 CAPITAL PROJ. NO. N-3906JJ  
 SCALE: 1"=50'  
 DATE: FEB., 1994

HOWARD COUNTY DEPARTMENT OF PUBLIC WORKS  
 PATHWAY EASEMENT  
 COLUMBIA ASSOCIATION, INC.  
 LOT 2 SECTION 5 AREA 2  
 VILLAGE OF OWEN BROWN  
 TAX MAP 36 PARCEL 402 LIBER 2030 FOLIO 247  
 6TH. ELECTION DISTRICT HOWARD COUNTY, MARYLAND

APPROVED  
 REAL ESTATE SER. DIV.  
*Tina D. Hackett* 2/21/97  
 BUR. OF ENGINEERING  
*Kenneth A. Ramsay* 2/21/97

PREPARED BY:  
**gpi**  
 GREENMAN-PEDERSEN INC.  
 ENGINEERS/ARCHITECTS/PLANNERS/SURVEYORS  
 14504 GREENVIEW DRIVE, SUITE 100  
 LAUREL, MD. 20708  
 WASH. (301) 470-2772 BALT. (410) 880-3055  
 DRAWN BY: NB & C.L.I.  
 CHECKED BY: W.W.S.

NOTE: COORDINATES SHOWN HEREON ARE BASED ON HOWARD COUNTY GEODETIC SYSTEM POINT NOS. 2341002 & 2241011, NAD 27 DATUM.

LINE DATA

LINE	DIRECTION	DISTANCE
L-2	S22°19'04"E	473.97'
L-3	S31°22'18"E	50.39'
L-4	S01°20'50"E	235.05'
L-5	S1C°08'12"E	72.61'

CURVE DATA

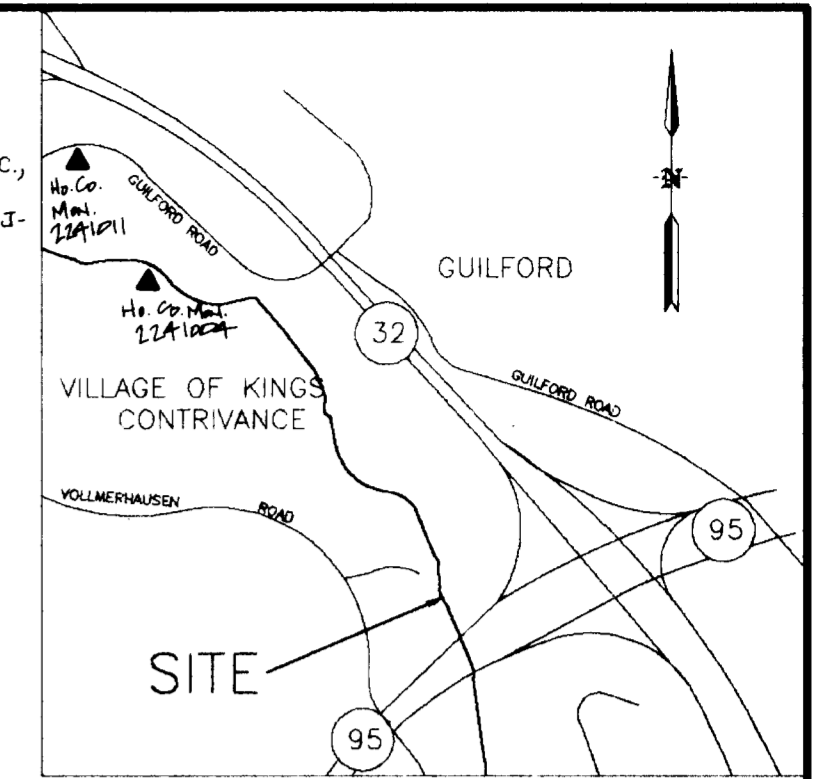
CURVE	RADIUS	LENGTH	TANGENT	CHORD	BEARING	DELTA
C-3	175.00'	27.65'	13.86'	27.63'	S26°50'41"E	09°03'15"
C-4	25.00'	13.10'	6.70'	12.95'	S16°21'34"E	30°01'28"
C-5	100.00'	15.34'	7.69'	15.33'	S05°44'31"E	08°47'22"
C-6	175.00'	29.34'	14.70'	29.31'	S14°56'23"E	09°36'22"

OPEN SPACE LOT 281  
VILLAGE OF KINGS CONTRIVANCE  
PLAT NO. 4238

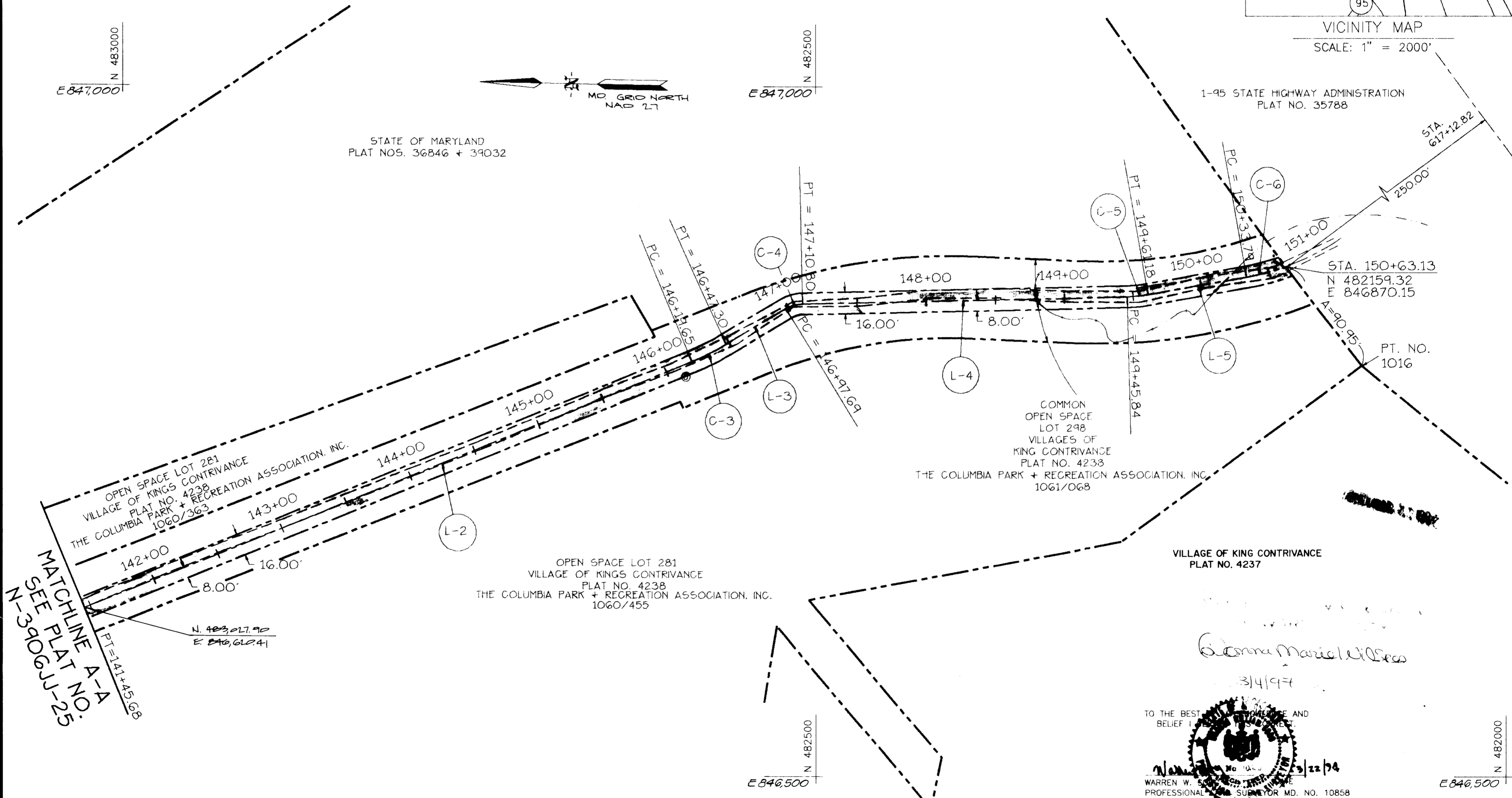
LEGEND

PATHWAY EASEMENT:  
32,830 S.F. OR 0.7537 AC.,  
MORE OR LESS. TOTAL EASEMENT  
PLATS NO. N-3906JJ-  
25 & 26.

- NOTE:  
1. For site control see contract drawings.  
2. Boundary based on a field run survey performed on or about March, 1994.



VICINITY MAP  
SCALE: 1" = 2000'



MATCHLINE A-A  
SEE PLAT NO. N-3906JJ-25

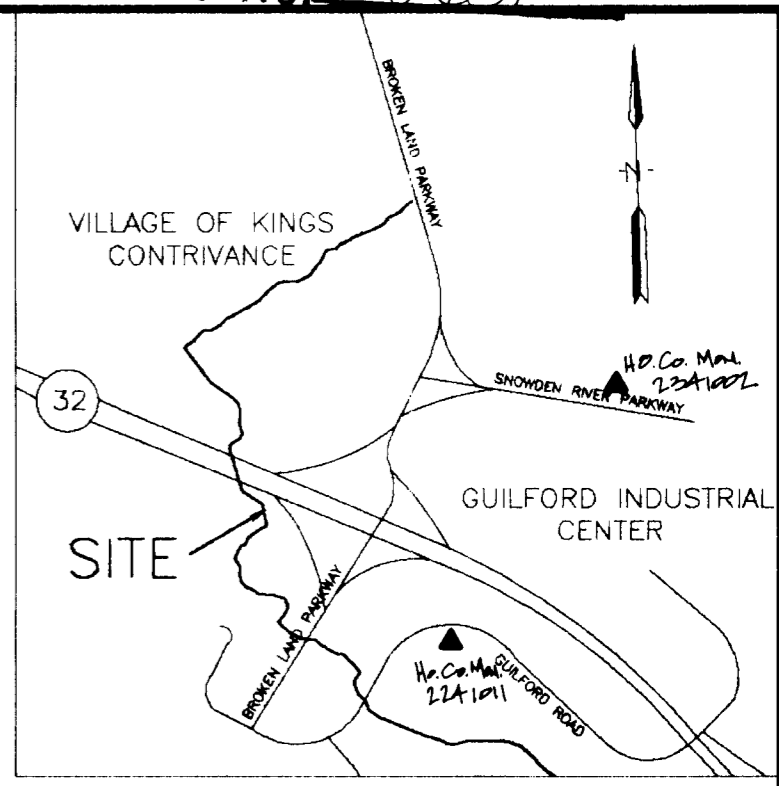
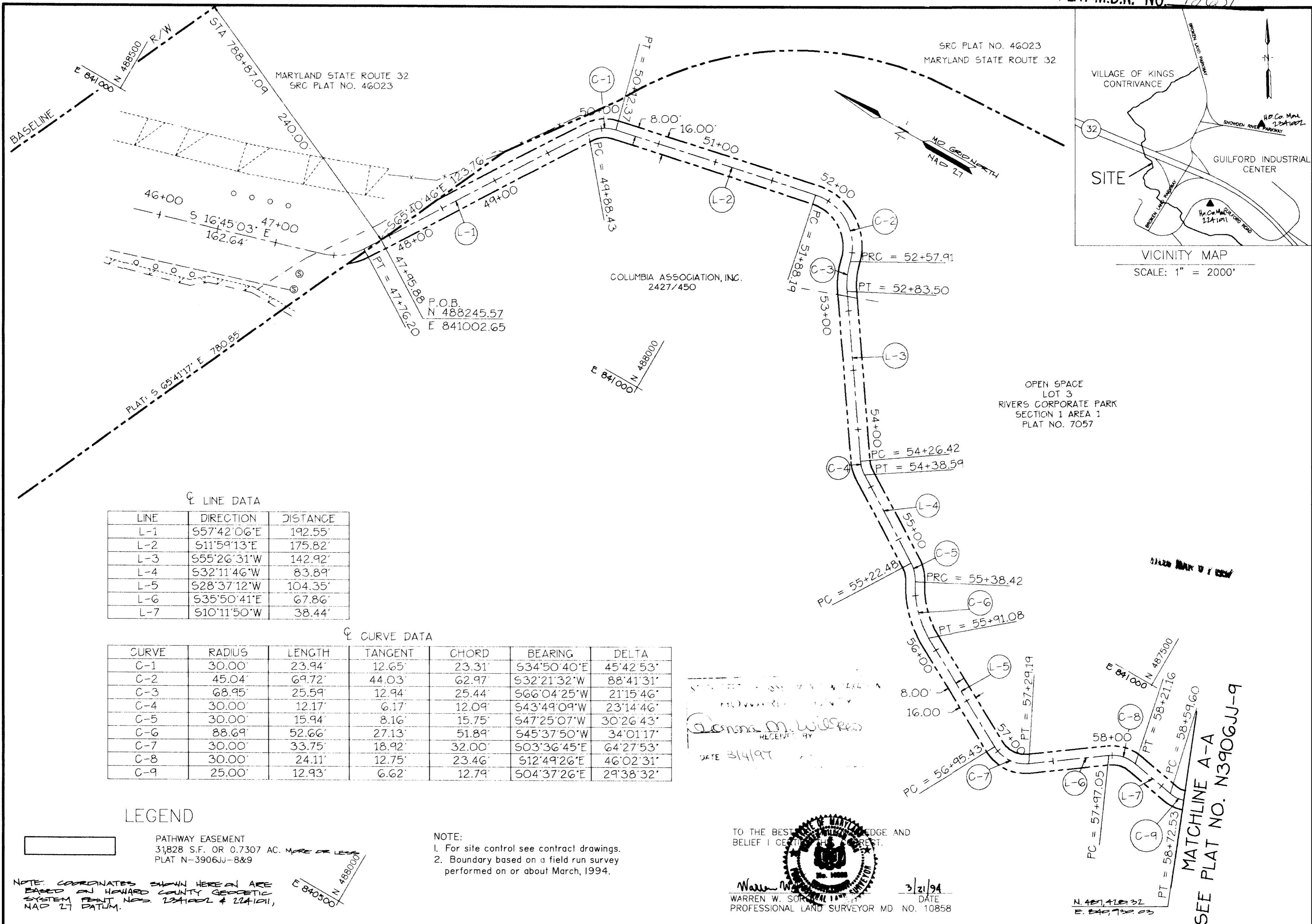
TO THE BEST OF MY BELIEF AND KNOWLEDGE I AM A LICENSED PROFESSIONAL SURVEYOR FOR MD. NO. 10858  
WARREN W. ...  
3/14/97

No.	REVISION	BY	DATE

PLAT NO. N-3906JJ-26  
CAPITAL PROJ. NO. N-3906JJ  
SCALE: 1"=50'  
DATE: FEB., 1994  
HOWARD COUNTY DEPARTMENT OF PUBLIC WORKS  
PATHWAY EASEMENT  
COLUMBIA ASSOCIATION, INC.  
LOT 298 VILLAGE OF KINGS CONTRIVANCE SECTION 3 AREA 1  
TAX MAP 42 PARCEL 437 LIBER 1061 FOLIO 068  
6TH. ELECTION DISTRICT HOWARD COUNTY, MARYLAND

APPROVED REAL ESTATE SER. DIV.  
Tina D. Hackett 2/21/97  
BUR. OF ENGINEERING  
Bennett 2/21/97

PREPARED BY:  
gpi  
GREENMAN-PEDERSEN INC.  
ENGINEERS/ARCHITECTS/PLANNERS/SURVEYORS  
14504 GREENVIEW DRIVE, SUITE 100  
LAUREL, MD. 20708  
WASH. (301) 470-2772 BALT. (410) 880-3055  
DRAWN BY: NB & C.L.I.  
CHECKED BY: W.W.S.



VICINITY MAP  
SCALE: 1" = 2000'

LINE DATA

LINE	DIRECTION	DISTANCE
L-1	S57°42'06"E	192.55'
L-2	S11°59'13"E	175.82'
L-3	S55°26'31"W	142.92'
L-4	S32°11'46"W	83.89'
L-5	S28°37'12"W	104.35'
L-6	S35°50'41"E	67.86'
L-7	S10°11'50"W	38.44'

CURVE DATA

CURVE	RADIUS	LENGTH	TANGENT	CHORD	BEARING	DELTA
C-1	30.00'	23.94'	12.65'	23.31'	S34°50'40"E	45°42'53"
C-2	45.04'	69.72'	44.03'	62.97'	S32°21'32"W	88°41'31"
C-3	68.95'	25.59'	12.94'	25.44'	S66°04'25"W	21°15'46"
C-4	30.00'	12.17'	6.17'	12.09'	S43°49'09"W	23°14'46"
C-5	30.00'	15.94'	8.16'	15.75'	S47°25'07"W	30°26'43"
C-6	88.69'	52.66'	27.13'	51.89'	S45°37'50"W	34°01'17"
C-7	30.00'	33.75'	18.92'	32.00'	S03°36'45"E	64°27'53"
C-8	30.00'	24.11'	12.75'	23.46'	S12°49'26"E	46°02'31"
C-9	25.00'	12.93'	6.62'	12.79'	S04°37'26"E	29°38'32"

LEGEND

PATHWAY EASEMENT  
31828 S.F. OR 0.7307 AC. MORE OR LESS  
PLAT N-3906JJ-8&9

NOTE: COORDINATES SHOWN HEREIN ARE BASED ON HOWARD COUNTY GEODETIC SYSTEM POINT NOS. 224100L & 224101L, NAD 27 DATUM.

NOTE:  
1. For site control see contract drawings.  
2. Boundary based on a field run survey performed on or about March, 1994.

Warren W. Soriano  
RECEIVED BY  
DATE 3/14/94

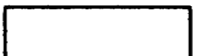
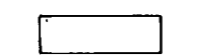
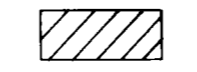
TO THE BEST OF MY KNOWLEDGE AND BELIEF I CERTIFY THAT THE FOREGOING IS A TRUE AND CORRECT REPRESENTATION OF THE FACTS.  
Warren W. Soriano  
WARREN W. SORIANO  
PROFESSIONAL LAND SURVEYOR MD NO. 10858  
DATE 3/31/94

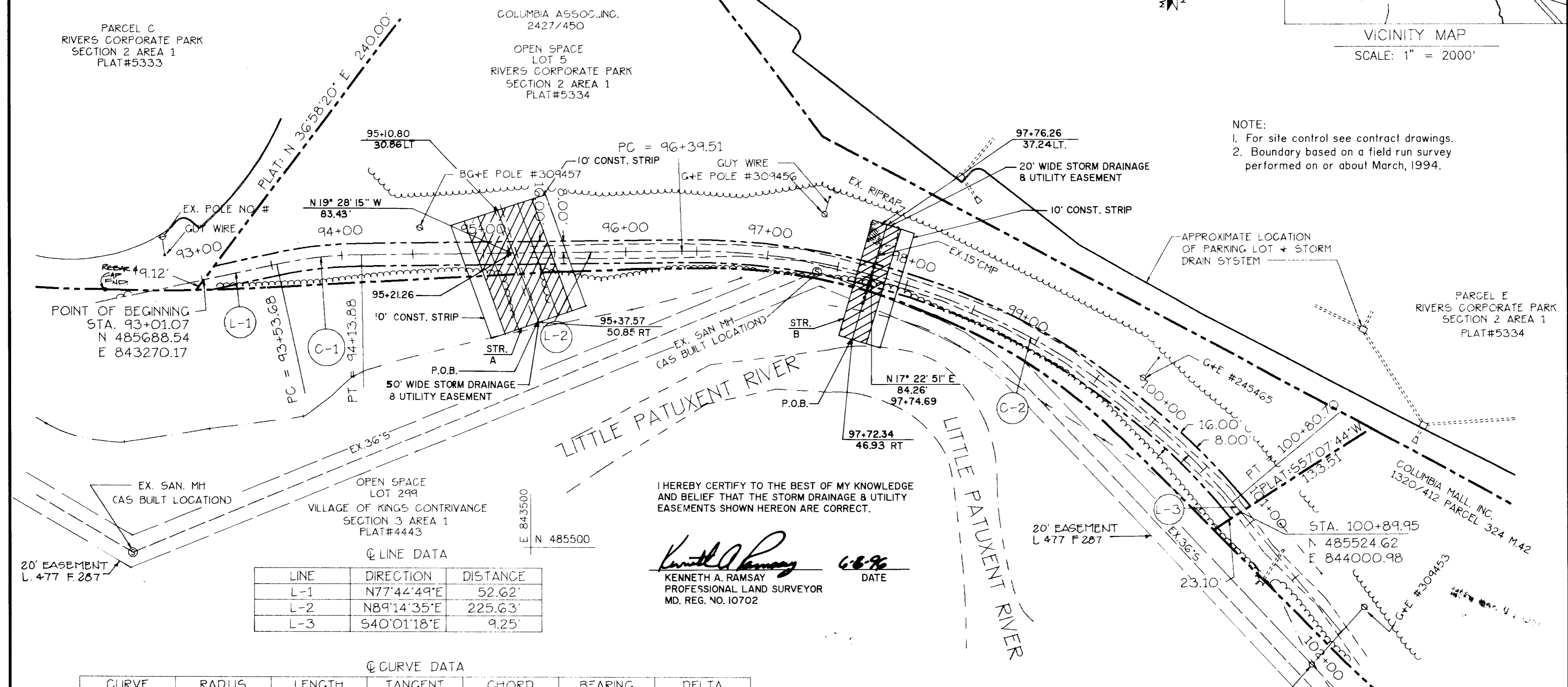
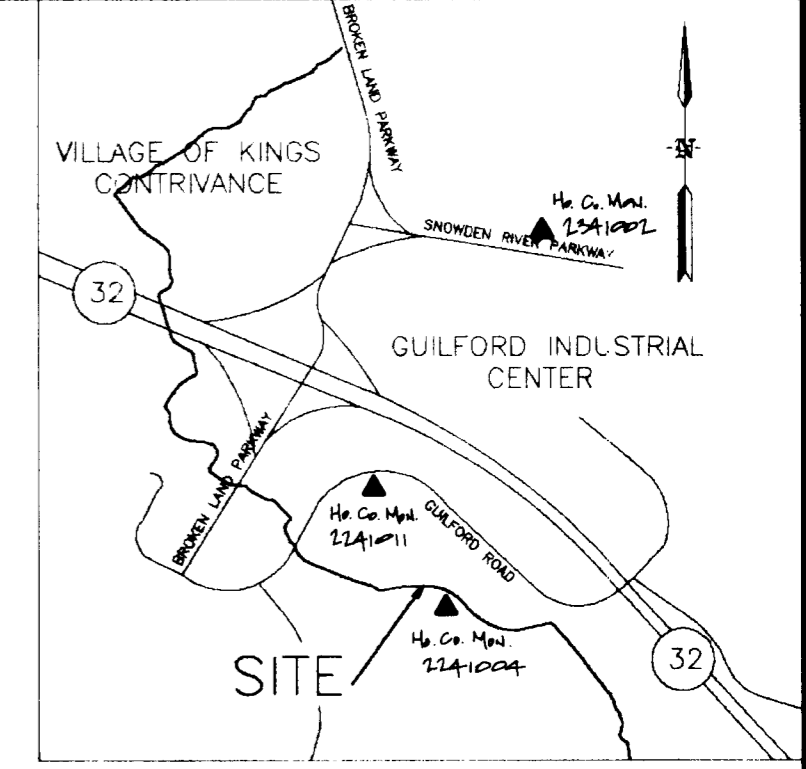
MATCHLINE A-A  
SEE PLAT NO. N3906JJ-9

NO.	REVISION	BY	DATE	PLAT NO. N-3906JJ-8	HOWARD COUNTY DEPARTMENT OF PUBLIC WORKS PATHWAY EASEMENT COLUMBIA ASSOCIATION, INC. LOT 3 RIVERS CORPORATE PARK SECTION 1 AREA 1 TAX MAP 42 PARCEL 322 LIBER 2427 FOLIO 450 6TH. ELECTION DISTRICT HOWARD COUNTY, MARYLAND	APPROVED REAL ESTATE SER. DIV. Tina D. Blackett 2/2/94 BUR. OF ENGINEERING Kenneth Edwards 2/21/97	PREPARED BY: gpi GREENMAN-PEDERSEN INC. ENGINEERS/ARCHITECTS/PLANNERS/SURVEYORS 14504 GREENVIEW DRIVE, SUITE 100 LAUREL, MD. 20708 WASH. (301) 470-2772 BALT. (410) 880-3055 DRAWN BY: N.B. & C.L.I. CHECKED BY: W.W.S.

NOTE: COORDINATES SHOWN HEREON ARE BASED ON HOWARD COUNTY GEODETIC SYSTEM POINT NOS. 2341002 & 2241011. NAD 27 DATUM.

LEGEND

-  PATHWAY EASEMENT  
12609 S.F. OR 0.2895 AC. MORE OR LESS
-  10' CONSTRUCTION STRIP
-  STORM DRAINAGE & UTILITY EASEMENT  
4,172 S.F. OR 0.0957 AC. (STR. A)  
1,685 S.F. OR 0.0387 AC. (STR. B)



NOTE:  
1. For site control see contract drawings.  
2. Boundary based on a field run survey performed on or about March, 1994.

POINT OF BEGINNING  
STA. 93+01.07  
N 485688.54  
E 843270.17

I HEREBY CERTIFY TO THE BEST OF MY KNOWLEDGE AND BELIEF THAT THE STORM DRAINAGE & UTILITY EASEMENTS SHOWN HEREON ARE CORRECT.

*Kenneth A. Ramsay*  
KENNETH A. RAMSAY  
PROFESSIONAL LAND SURVEYOR  
MD. REG. NO. 10702  
DATE 6-8-96

LINE DATA

LINE	DIRECTION	DISTANCE
L-1	N77°44'49"E	52.62'
L-2	N89°14'35"E	225.63'
L-3	S40°01'18"E	9.25'

CURVE DATA

CURVE	RADUS	LENGTH	TANGENT	CHORD	BEARING	DELTA
C-1	300.00'	60.19'	30.20'	60.09'	N83°29'42"E	11°29'47"
C-2	498.24'	441.19'	236.24'	426.92'	S65°23'21"E	50°44'07"

WARREN W. SORP  
PROFESSIONAL LAND SURVEYOR MD. NO. 10858  
DATE 3/21/94

No.	REVISION	BY	DATE
1	ADD STORM DRAINAGE EASEMENT	G.W.D.	05-96
2	REVISED AREA (STR. A)	KAS	06-96

PLAT NO. N-3906JJ-18 HOWARD COUNTY DEPARTMENT OF PUBLIC WORKS  
CAPITAL PROJ. NO. N-3906JJ PATHWAY EASEMENT  
SCALE: 1"=50' COLUMBIA ASSOCIATION, INC.  
DATE: FEB., 1994 LOT 5 SECTION 2 AREA 1  
RIVERS CORPORATE PARK  
TAX MAP 42 PARCEL 57 LIBER 2427 FOLIO 45C  
6TH. ELECTION DISTRICT HOWARD COUNTY, MARYLAND

APPROVED REAL ESTATE SER. DIV.  
*Traci Hackett* 2/21/97  
BUR. OF ENGINEERING  
*Kenneth A. Ramsay* 2/21/97

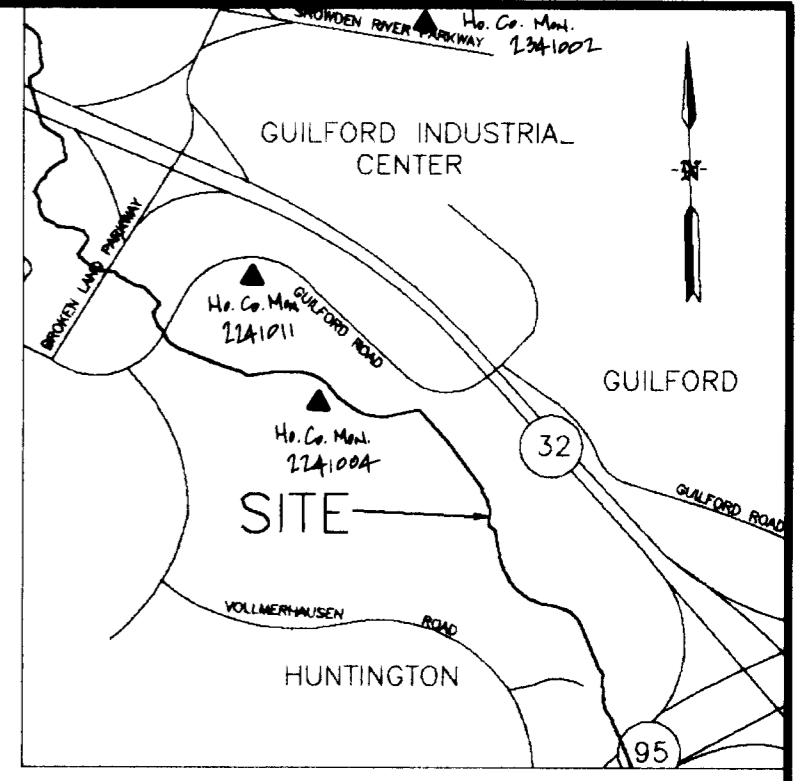
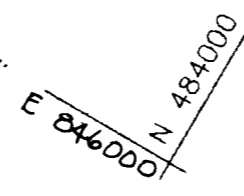
PREPARED BY: GREENMAN-PEDERSEN INC.  
ENGINEERS/ARCHITECTS/PLANNERS/SURVEYORS  
14504 GREENVIEW DRIVE, SUITE 100  
LAUREL, MD. 20708  
WASH. (301) 470-2772 BALT. (410) 880-3055  
DRAWN BY: NB & C.L.I.  
CHECKED BY: W.W.S.

NOTE: COORDINATES SHOWN HEREON ARE BASED ON HOWARD COUNTY GEODETIC SYSTEM POINT NOS. 2341002 & 2241011. NAD 27 DATUM.

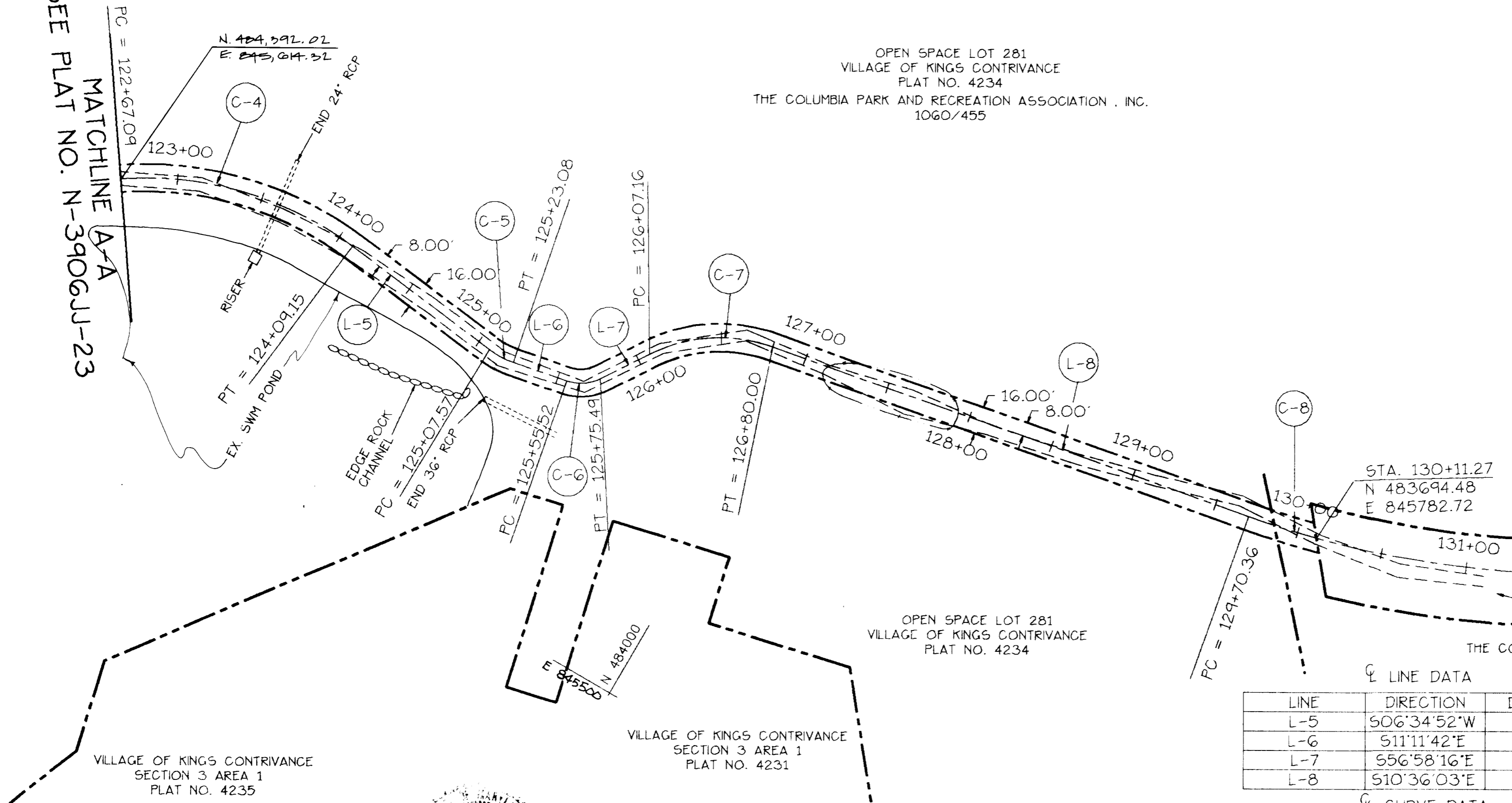
NOTE:  
1. For site control see contract drawings.  
2. Boundary based on a field run survey performed on or about March, 1994.

LEGEND

PATHWAY EASEMENT:  
26,049 S.F. OR 0.5980 AC. MORE OR LESS.  
TOTAL EASEMENT  
PLATS N. N-3906JJ-23 & 24.



SEE PLAT NO. N-3906JJ-23  
MATCHLINE A-A



OPEN SPACE LOT 281  
VILLAGE OF KINGS CONTRIVANCE  
PLAT NO. 4234  
THE COLUMBIA PARK AND RECREATION ASSOCIATION, INC.  
1060/455

OPEN SPACE LOT 281  
VILLAGE OF KINGS CONTRIVANCE  
PLAT NO. 4234

VILLAGE OF KINGS CONTRIVANCE  
SECTION 3 AREA 1  
PLAT NO. 4235

VILLAGE OF KINGS CONTRIVANCE  
SECTION 3 AREA 1  
PLAT NO. 4231

STA. 130+11.27  
N 483694.48  
E 845782.72

RECORDS & TAXATION  
HOWARD COUNTY  
Dennis M. ...  
3/4/94

COMMON OPEN SPACE  
LOT 298  
PLAT NO. 4236  
THE COLUMBIA PARK AND RECREATION ASSOCIATION, INC.  
1061/068

LINE DATA

LINE	DIRECTION	DISTANCE
L-5	S06°34'52"W	98.42'
L-6	S11°11'42"E	32.44'
L-7	S56°58'16"E	31.67'
L-8	S10°36'03"E	290.36'

CURVE DATA

CURVE	RADIUS	LENGTH	TANGENT	CHORD	BEARING	DELTA
C-4	198.14'	142.06'	74.24'	139.04'	S13°57'31"E	41°04'46"
C-5	50.00'	15.51'	7.82'	15.45'	S02°18'25"E	17°46'34"
C-6	25.00'	19.97'	10.55'	19.45'	S34°04'59"E	45°46'34"
C-7	90.00'	72.84'	38.55'	70.87'	S33°47'10"E	46°22'12"
C-8	575.00'	40.91'	20.47'	40.90'	S12°38'21"E	04°04'36"

TO THE BEST OF MY KNOWLEDGE AND BELIEF I CERTIFY THIS IS CORRECT.  
Warren W. Sorger  
WARREN W. SORGER  
PROFESSIONAL LAND SURVEYOR MD. NO. 10858  
3/21/94

No.	REVISION	BY	DATE


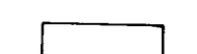
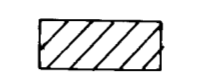

PLAT NO. N-3906JJ-24  
CAPITAL PROJ. NO. N-3906JJ  
SCALE: 1"=50'  
DATE: FEB., 1994  
HOWARD COUNTY DEPARTMENT OF PUBLIC WORKS  
PATHWAY EASEMENT  
THE COLUMBIA PARK AND RECREATION ASSOCIATION, INC.  
LOT 281 VILLAGE OF KINGS CONTRIVANCE SECTION 3 AREA 1  
TAX MAP 43 PARCEL 437 LIBER 1060 FOLIO 455  
6TH. ELECTION DISTRICT  
HOWARD COUNTY, MARYLAND

APPROVED  
REAL ESTATE SER. DIV.  
Tina D. ... 2/21/97  
BUR. OF ENGINEERING  
Kenneth ... 2/21/97

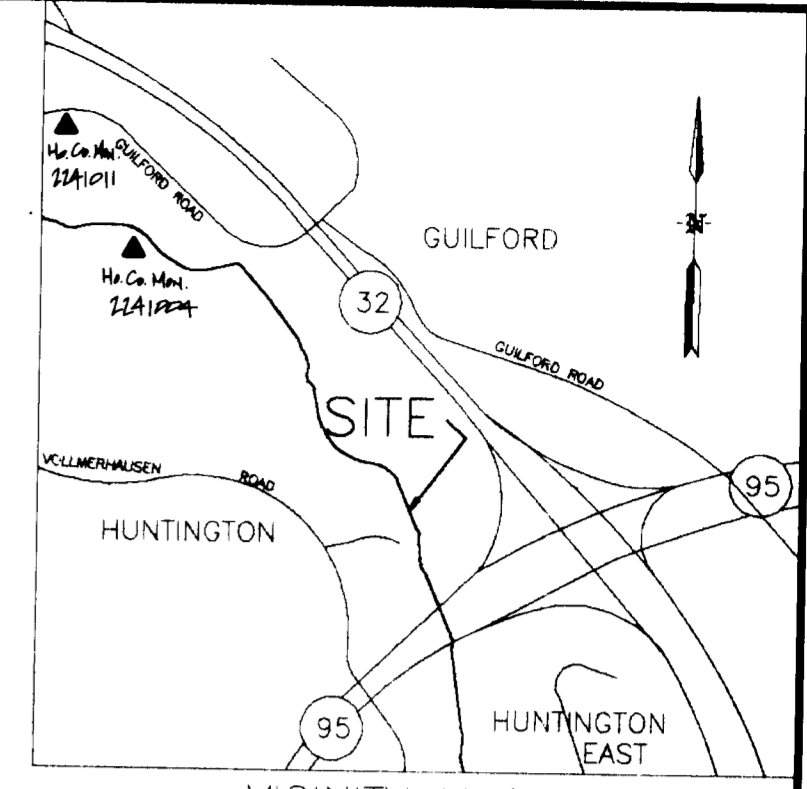
PREPARED BY:  
gpi  
GREENMAN-PEDERSEN INC.  
ENGINEERS/ARCHITECTS/PLANNERS/SURVEYORS  
14504 GREENVIEW DRIVE, SUITE 100  
LAUREL, MD. 20708  
WASH. (301) 470-2772 BALT. (410) 880-3055  
DRAWN BY: NB & C.L.I.  
CHECKED BY: W.W.S.  
FILE=3906JJ24

NOTE: COORDINATES SHOWN HEREON ARE BASED ON HOWARD COUNTY GEODETIC SYSTEM POINT NOS. 2341001 & 2241011, NAD 27 DATUM.

LEGEND

-  PATHWAY EASEMENT: 32,830 S.F. OR 0.7537 AC., MORE OR LESS.
-  TOTAL EASEMENT PLATS No. N-3906JJ-25 & 26.
-  CONSTRUCTION STRIP
-  STORM DRAINAGE & UTILITY EASEMENT 1,220 S.F. OR 0.0280 AC. - (STR. A) 1,255 S.F. OR 0.0288 AC. - (STR. B)

NOTE:  
1. For site control see contract drawings.  
2. Boundary based on a field run survey performed on or about March, 1994.



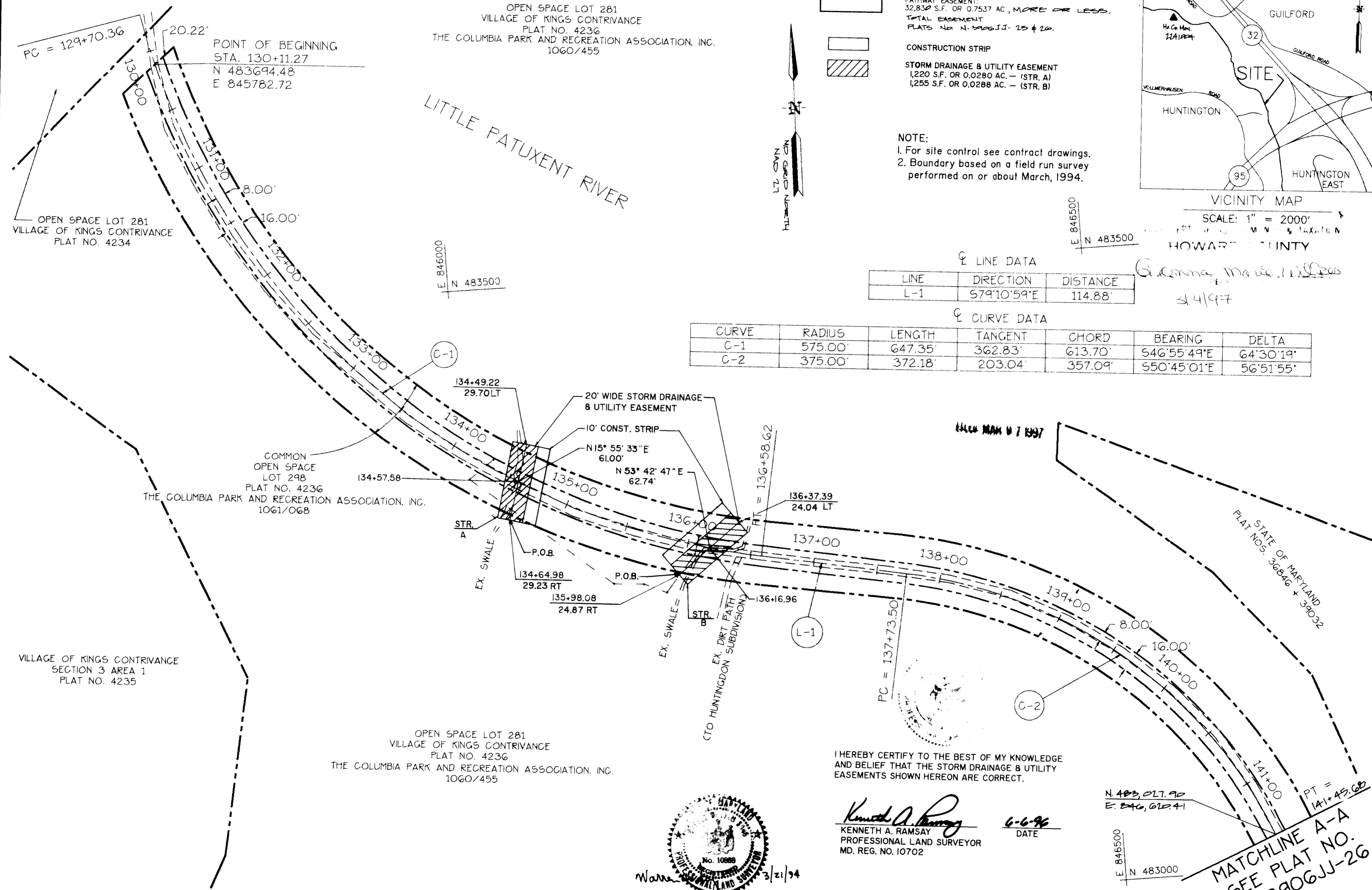
VICINITY MAP  
SCALE: 1" = 2000'  
HOWARD COUNTY

LINE DATA

LINE	DIRECTION	DISTANCE
L-1	S79°10'59"E	114.88'

CURVE DATA

CURVE	RADIUS	LENGTH	TANGENT	CHORD	BEARING	DELTA
C-1	575.00'	647.35'	362.83'	613.70'	S46°55'49"E	64°30'19"
C-2	375.00'	372.18'	203.04'	357.09'	S50°45'01"E	56°51'55"



I HEREBY CERTIFY TO THE BEST OF MY KNOWLEDGE AND BELIEF THAT THE STORM DRAINAGE & UTILITY EASEMENTS SHOWN HEREON ARE CORRECT.

*Kenneth A. Ramsay*  
KENNETH A. RAMSAY  
PROFESSIONAL LAND SURVEYOR  
MD. REG. NO. 10702  
6-6-96  
DATE



MATCHLINE A-A  
SEE PLAT NO.  
N-3906JJ-26

No.	REVISION	BY	DATE	PLAT NO. N-3906JJ-25	HOWARD COUNTY DEPARTMENT OF PUBLIC WORKS PATHWAY EASEMENT	APPROVED REAL ESTATE SER. DIV. <i>Tina D. Hackett</i> 2/21/97 DATE	PREPARED BY:
#1	ADD STORM DRAINAGE EASEMENT	G.W.D.	05-96	CAPITAL PROJ. NO. N-3906JJ	COLUMBIA ASSOCIATION, INC. LOT 298 VILLAGE OF KINGS CONTRIVANCE TAX MAP 42 PARCEL 437 LIBER 1061 FOLIO 068 6TH. ELECTION DISTRICT HOWARD COUNTY, MARYLAND	BUR. OF ENGINEERING <i>Benjamin</i> 2/21/97 DATE	GREENMAN-PEDERSEN INC. ENGINEERS/ARCHITECTS/PLANNERS/SURVEYORS 14504 GREENVIEW DRIVE, SUITE 100 LAUREL, MD. 20708 WASH. (301) 470-2772 BALT. (410) 880-3055
				SCALE: 1"=50' DATE: FEB., 1994			DRAWN BY: NB & C.L.I. CHECKED BY: W.W.S.