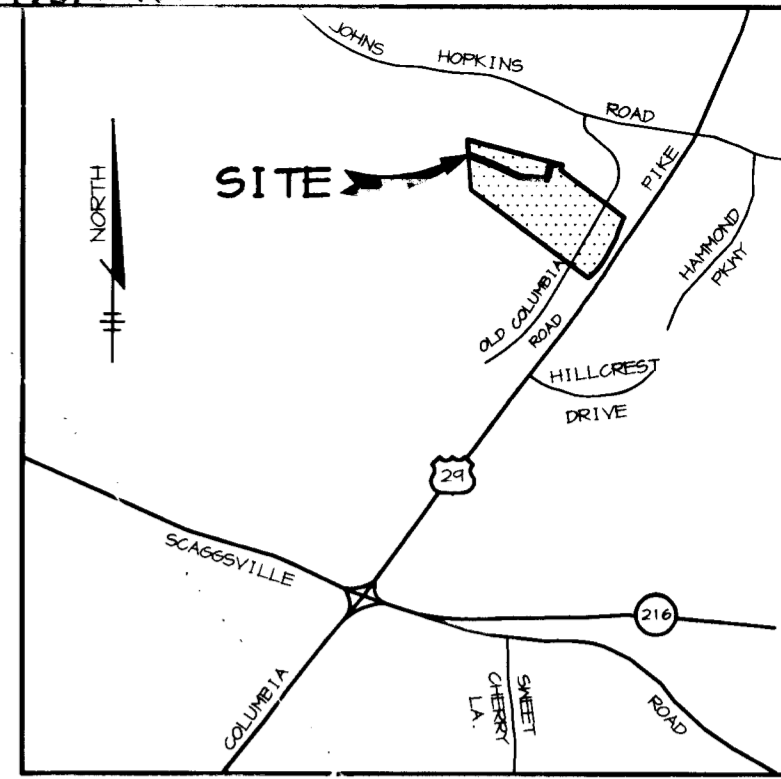


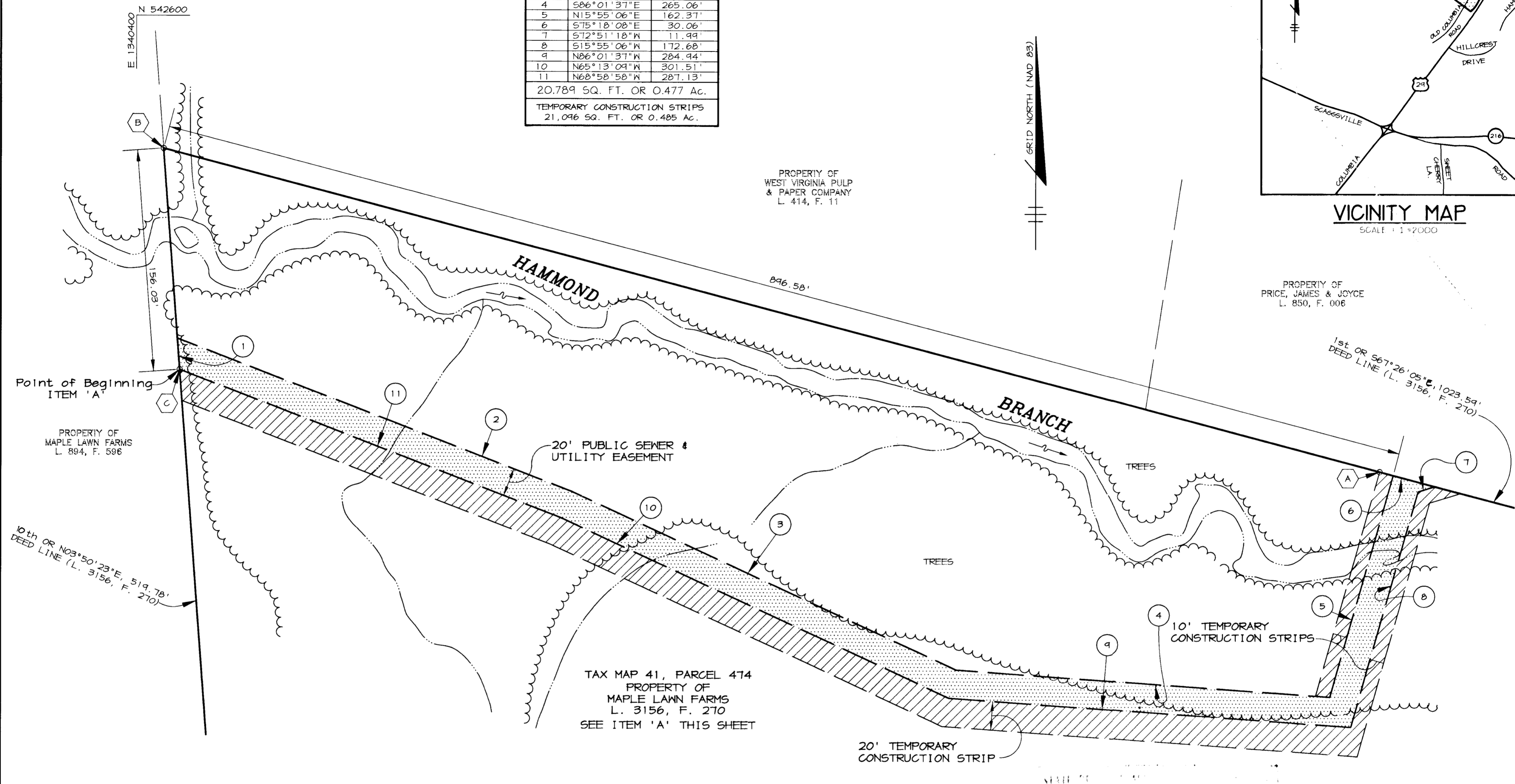
REVISION DESCRIPTION	DATE

COORDINATE LIST		
No.	NORTH	EAST
(A)	542281.742	1341276.796
(B)	542506.686	1340419.230
(C)	542351.080	1340430.692

ITEM 'A'		
TAX MAP 41, PARCEL 474		
MAPLE LAWN FARMS		
L. 3156, F. 270		
LINE	DIRECTION	DISTANCE
1	N04°12'46"W	22.11'
2	S68°58'58"E	297.21'
3	S65°13'09"E	298.49'
4	S86°01'37"E	265.06'
5	N15°55'06"E	162.37'
6	S75°18'08"E	30.06'
7	S72°51'18"W	11.99'
8	S15°55'06"W	172.68'
9	N86°01'37"W	284.94'
10	N65°13'09"W	301.51'
11	N68°58'58"W	287.13'
20.789 SQ. FT. OR 0.477 Ac.		
TEMPORARY CONSTRUCTION STRIPS		
21,096 SQ. FT. OR 0.485 Ac.		



VICINITY MAP
SCALE: 1"=2000'



PLAN
SCALE: 1"=50'

Bennie Best - Dec
12/30/96

FILED JAN 16 1997

RIEMER MUEGGE & ASSOCIATES, INC.
ENGINEERING • ENVIRONMENTAL SERVICES • PLANNING • SURVEYING
8818 Centre Park Drive, Columbia, Maryland 21045
tel 410.997.8900 fax 410.997.9282

M:\PROJECT\SURVEY2\96\921\SEASPLT2.DWG

APPROVED: REAL ESTATE SERVICES
Tina D. Blackett 10/26/96
DATE
APPROVED: BUREAU OF ENGINEERING
Arthur E. Muegge
DATE

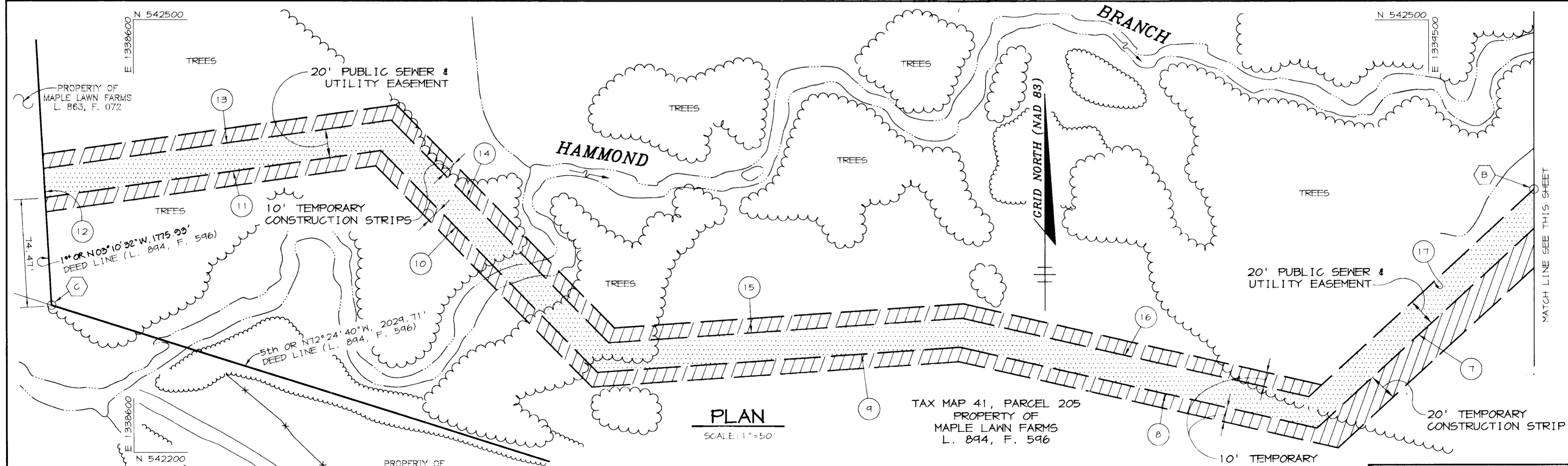
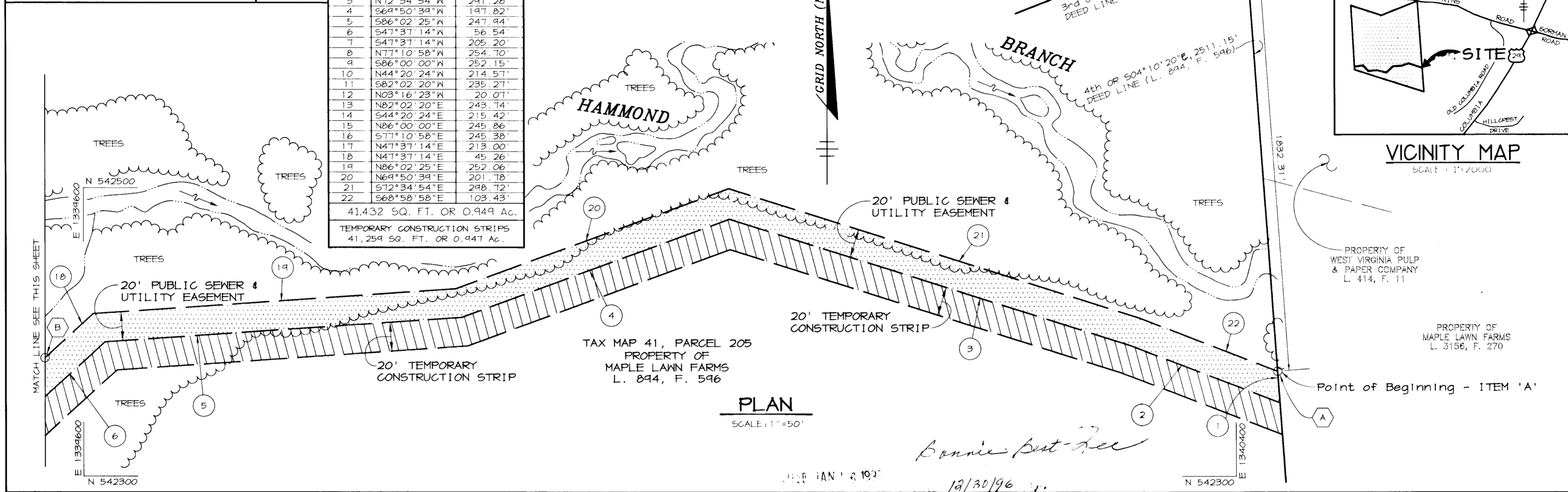
HOWARD COUNTY DEPARTMENT OF PUBLIC WORKS
SEWER AND UTILITY EASEMENT
WESTERN SCHOOL COMPLEX
CONTRACT 20-3506
PROPERTY OF
MAPLE LAWN FARMS
5th ELECTION DISTRICT, HOWARD COUNTY, MARYLAND

DRAWN BY: C.G.F.
CHECKED BY: L.J.D.
PLAT NO. 20-3506-2
CAP. PROJ. NO. W-8213
SCALE: AS SHOWN
DATE: 10-02-96
SHEET 1 OF 3

REVISION DESCRIPTION	DATE

ITEM 'A'		
TAX MAP 41, PARCEL 205 MAPLE LAWN FARMS L. 894, F. 596		
LINE	DIRECTION	DISTANCE
1	S04°12'46"E	22.11'
2	N68°58'58"W	112.22'
3	N72°34'54"W	291.28'
4	S69°50'39"W	197.82'
5	S86°02'25"W	247.94'
6	S47°37'14"W	56.54'
7	S47°37'14"W	205.20'
8	N77°10'58"W	254.70'
9	S86°00'00"W	252.15'
10	N44°20'24"W	214.57'
11	S82°02'20"W	235.27'
12	N03°16'23"W	20.07'
13	N82°02'20"E	243.74'
14	S44°20'24"E	215.42'
15	N86°00'00"E	245.86'
16	S77°10'58"E	245.38'
17	N47°37'14"E	213.00'
18	N47°37'14"E	45.26'
19	N86°02'25"E	252.06'
20	N69°50'39"E	201.78'
21	S72°34'54"E	248.72'
22	S68°58'58"E	103.43'
41,432 SQ. FT. OR 0.949 AC.		
TEMPORARY CONSTRUCTION STRIPS 41,259 SQ. FT. OR 0.947 AC.		

COORDINATE LIST		
No.	NORTH	EAST
A	542373.130	1340429.068
B	542382.204	1339573.191
C	542302.255	1338542.991



RIEMER MUEGGE & ASSOCIATES, INC.
 ENGINEERING • ENVIRONMENTAL SERVICES • PLANNING • SURVEYING
 8818 Centre Park Drive, Columbia, Maryland 21045
 tel 410.997.8900 fax 410.997.9282

APPROVED: REAL ESTATE SERVICES
[Signature]
 DATE: 12/30/96

APPROVED: BUREAU OF ENGINEERING
[Signature]
 DATE: 12/30/96

HOWARD COUNTY DEPARTMENT OF PUBLIC WORKS
**SEWER AND UTILITY EASEMENT
 WESTERN SCHOOL COMPLEX
 CONTRACT 20-3506**

PROPERTY OF
 MAPLE LAWN FARMS
 5th ELECTION DISTRICT, HOWARD COUNTY, MARYLAND

DRAWN BY: C.G.F.
 CHECKED BY: L.J.D.

PLAT NO. 20-3506-2
 CAP. PROJ. NO. W-8213
 SCALE: AS SHOWN
 DATE: 10-02-96
 SHEET 2 OF 3

REVISION DESCRIPTION	DATE

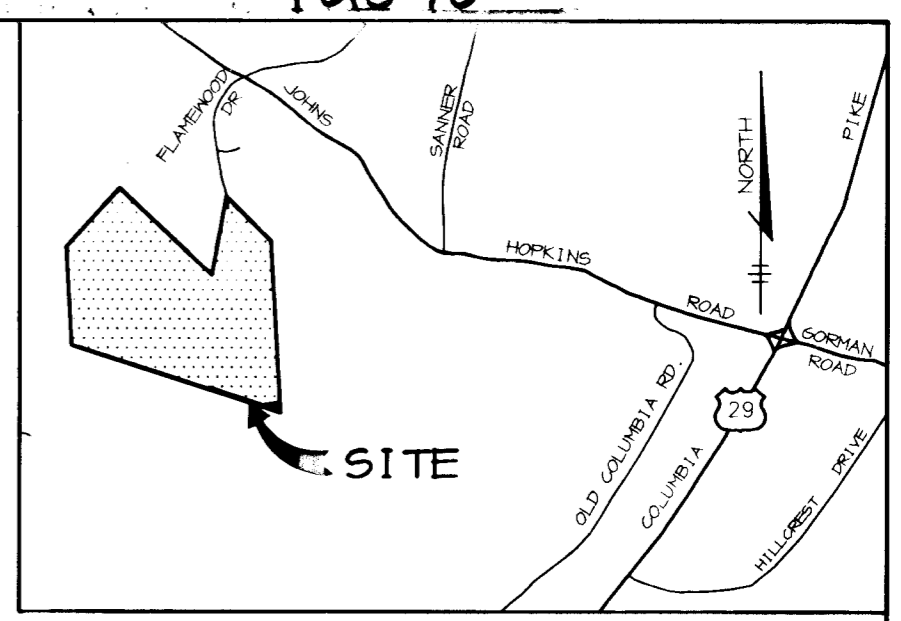
ITEM 'A'
TAX MAP 41, PARCEL 114
MAPLE LAWN FARMS
L. 863, F. 072

LINE	DIRECTION	DISTANCE
1	S87°02'20"W	161.71'
2	N72°27'48"W	650.66'
3	N78°02'51"E	40.63'
4	S72°27'48"E	610.77'
5	N82°02'20"E	158.83'
6	S03°16'23"E	20.07'

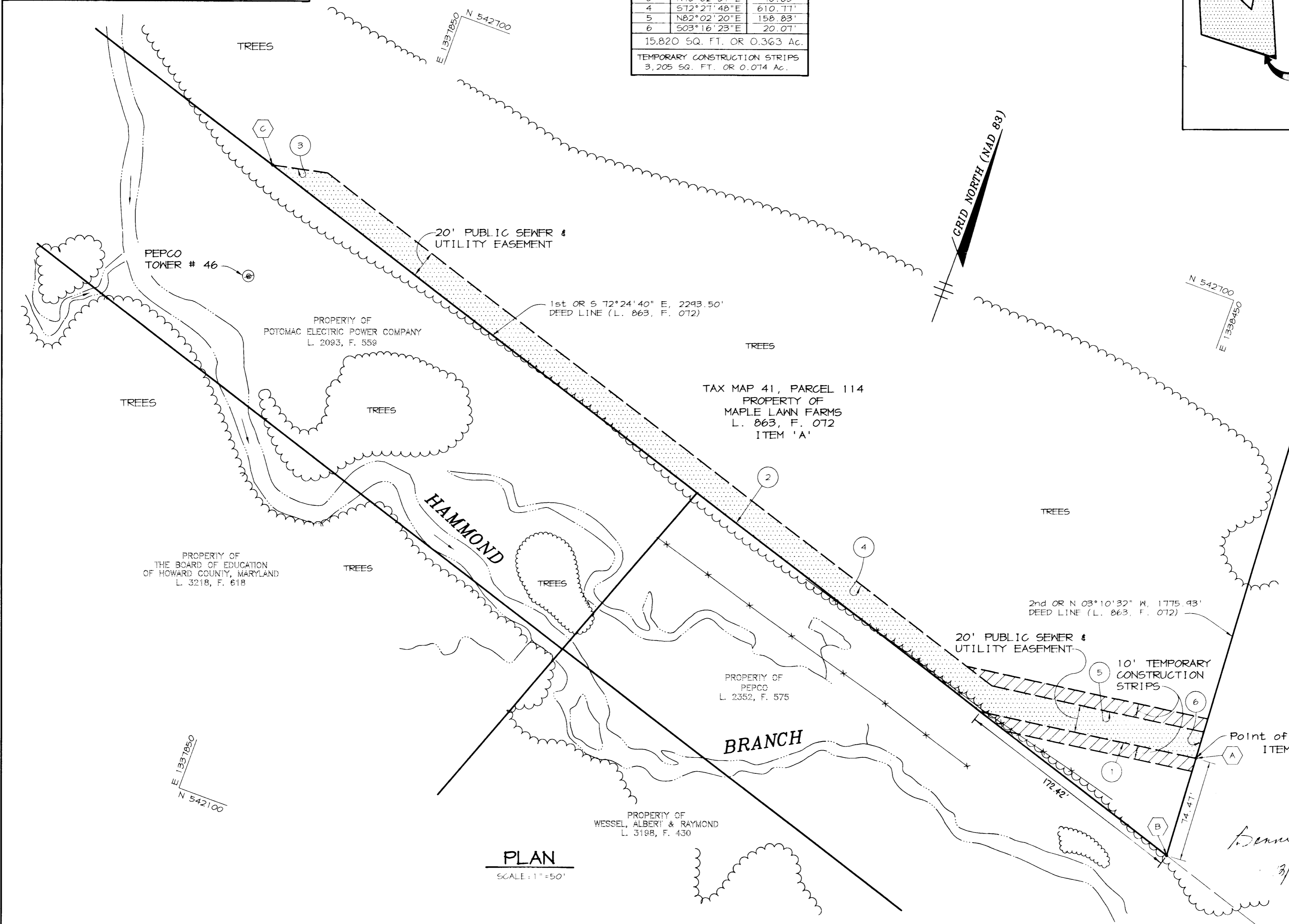
15,820 SQ. FT. OR 0.363 Ac.
TEMPORARY CONSTRUCTION STRIPS
3,205 SQ. FT. OR 0.074 Ac.

COORDINATE LIST

No.	NORTH	EAST
(A)	542376.604	1338538.734
(B)	542302.255	1338542.491
(C)	542550.254	1337758.164



VICINITY MAP
SCALE: 1"=2000'



VICINITY MAP
SCALE: 1"=2000'

Bennie Best-Free
3/30/96

DATE JAN 16 1997

DRAWN BY: C.G.F.
CHECKED BY: L.J.D.

PLAT NO. W-20-3506-2
CAP. PROJ. NO. W-8213
SCALE: AS SHOWN
DATE: 10-02-96
SHEET 3 OF 3

RIEMER MUEGGE & ASSOCIATES, INC.
ENGINEERING • ENVIRONMENTAL SERVICES • PLANNING • SURVEYING
8818 Centre Park Drive, Columbia, Maryland 21045
tel 410.997.8900 fax 410.997.9282

M:\PROJECT\SURVEY\2796\921\SEASPL1.DWG

APPROVED:
REAL ESTATE SERVICES
[Signature]
DATE 10/2/96

APPROVED: BUREAU OF
ENGINEERING
[Signature]
DATE 10/9/96

Arthur E. Muegge
ARTHUR E. MUEGGE, P.E. 10751

HOWARD COUNTY DEPARTMENT OF PUBLIC WORKS
**SEWER AND UTILITY EASEMENT
WESTERN SCHOOL COMPLEX
CONTRACT 20-3506**
PROPERTY OF
MAPLE LAWN FARMS
5th ELECTION DISTRICT, HOWARD COUNTY, MARYLAND