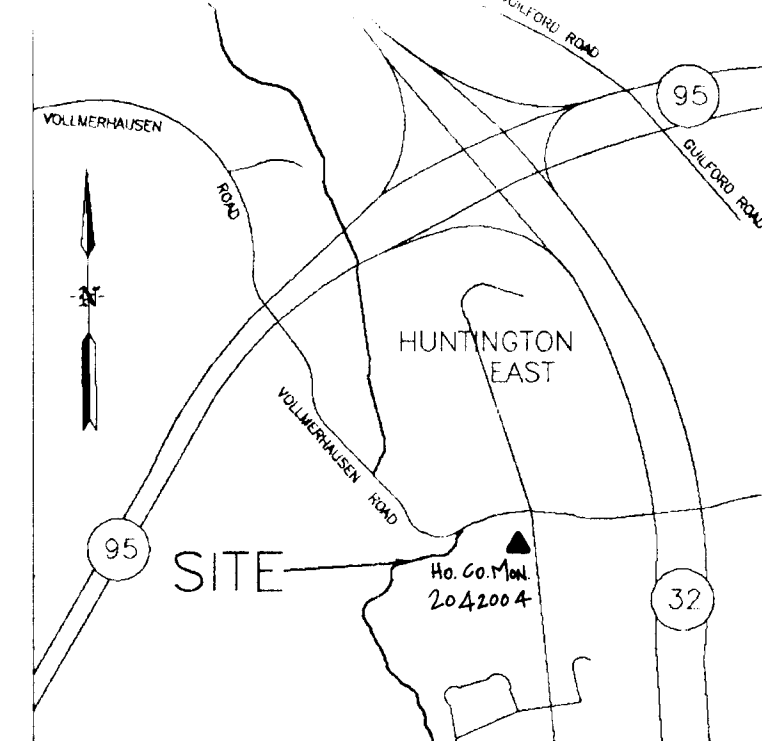


NOTE: COORDINATES SHOWN HEREON ARE BASED ON HOWARD COUNTY GEODETIC SYSTEM POINT NOS. 2341C02 & 2241011. NAD-21 DATUM.

LEGEND

PATHWAY EASEMENT:  
27.276 S.F. OR 0.6262 AC.  
PLATS N-3906JJ-31 & 32.  
MORE OR LESS.

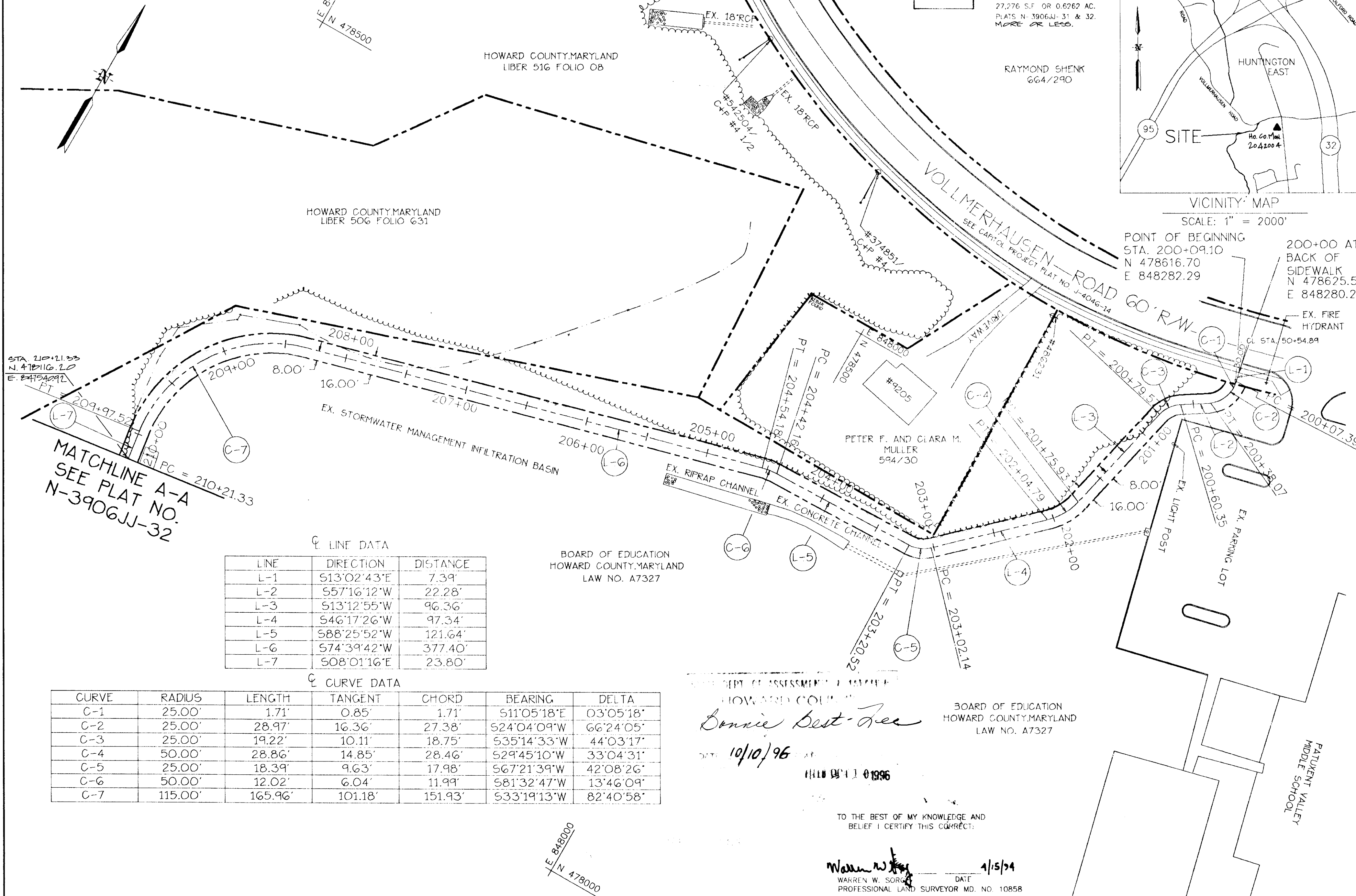
RAYMOND SHENK  
664/290



VICINITY MAP  
SCALE: 1" = 2000'

POINT OF BEGINNING  
STA. 200+09.10  
N 478616.70  
E 848282.29

200+00 AT  
BACK OF  
SIDEWALK  
N 478625.58  
E 848280.29



MATCHLINE A-A  
SEE PLAT NO.  
N-3906JJ-32

LINE DATA

LINE	DIRECTION	DISTANCE
L-1	S13°02'43"E	7.39'
L-2	S57°16'12"W	22.28'
L-3	S13°12'55"W	96.36'
L-4	S46°17'26"W	97.34'
L-5	S88°25'52"W	121.64'
L-6	S74°39'42"W	377.40'
L-7	S08°01'16"E	23.80'

CURVE DATA

CURVE	RADIUS	LENGTH	TANGENT	CHORD	BEARING	DELTA
C-1	25.00'	1.71'	0.85'	1.71'	S11°05'18"E	03°05'18"
C-2	25.00'	28.97'	16.36'	27.38'	S24°04'09"W	66°24'05"
C-3	25.00'	19.22'	10.11'	18.75'	S35°14'33"W	44°03'17"
C-4	50.00'	28.86'	14.85'	28.46'	S29°45'10"W	33°04'31"
C-5	25.00'	18.39'	9.63'	17.98'	S67°21'39"W	42°08'26"
C-6	50.00'	12.02'	6.04'	11.99'	S81°32'47"W	13°46'09"
C-7	115.00'	165.96'	101.18'	151.93'	S33°19'13"W	82°40'58"

BOARD OF EDUCATION  
HOWARD COUNTY, MARYLAND  
LAW NO. A7327

BOARD OF EDUCATION  
HOWARD COUNTY, MARYLAND  
LAW NO. A7327

DEPT. OF ASSESSMENT & TAXATION  
HOWARD COUNTY, MARYLAND  
*Donnie Best-Tree*  
DATE: 10/10/96

TO THE BEST OF MY KNOWLEDGE AND BELIEF I CERTIFY THIS CORRECT:

*Warren W. Sorg* 4/5/94  
WARREN W. SORG DATE  
PROFESSIONAL LAND SURVEYOR MD. NO. 10858

No.	REVISION	BY	DATE

PLAT NO. N-3906JJ-31  
CAPITAL PROJ. NO. N-3906JJ  
SCALE: 1"=50'  
DATE: MARCH, 1994

HOWARD COUNTY DEPARTMENT OF PUBLIC WORKS  
PATHWAY EASEMENT  
BOARD OF EDUCATION OF HOWARD COUNTY  
TAX MAP 47 PARCEL 25  
LAW NO. A7327

6TH. ELECTION DISTRICT  
HOWARD COUNTY, MARYLAND

APPROVED  
REAL ESTATE SER. DIV.  
*Tim D. Haddock*  
BUR. OF ENGINEERING  
*Bennett*

PREPARED BY:  
**gpi**  
GREENMAN-PEDERSEN INC.  
ENGINEERS/ARCHITECTS/PLANNERS/SURVEYORS  
14504 GREENVIEW DRIVE, SUITE 100  
LAUREL, MD. 20708  
WASH. (301) 470-2772 BALT. (410) 880-3055

DRAWN BY: NB & C.L.I.  
CHECKED BY: W.W.S.