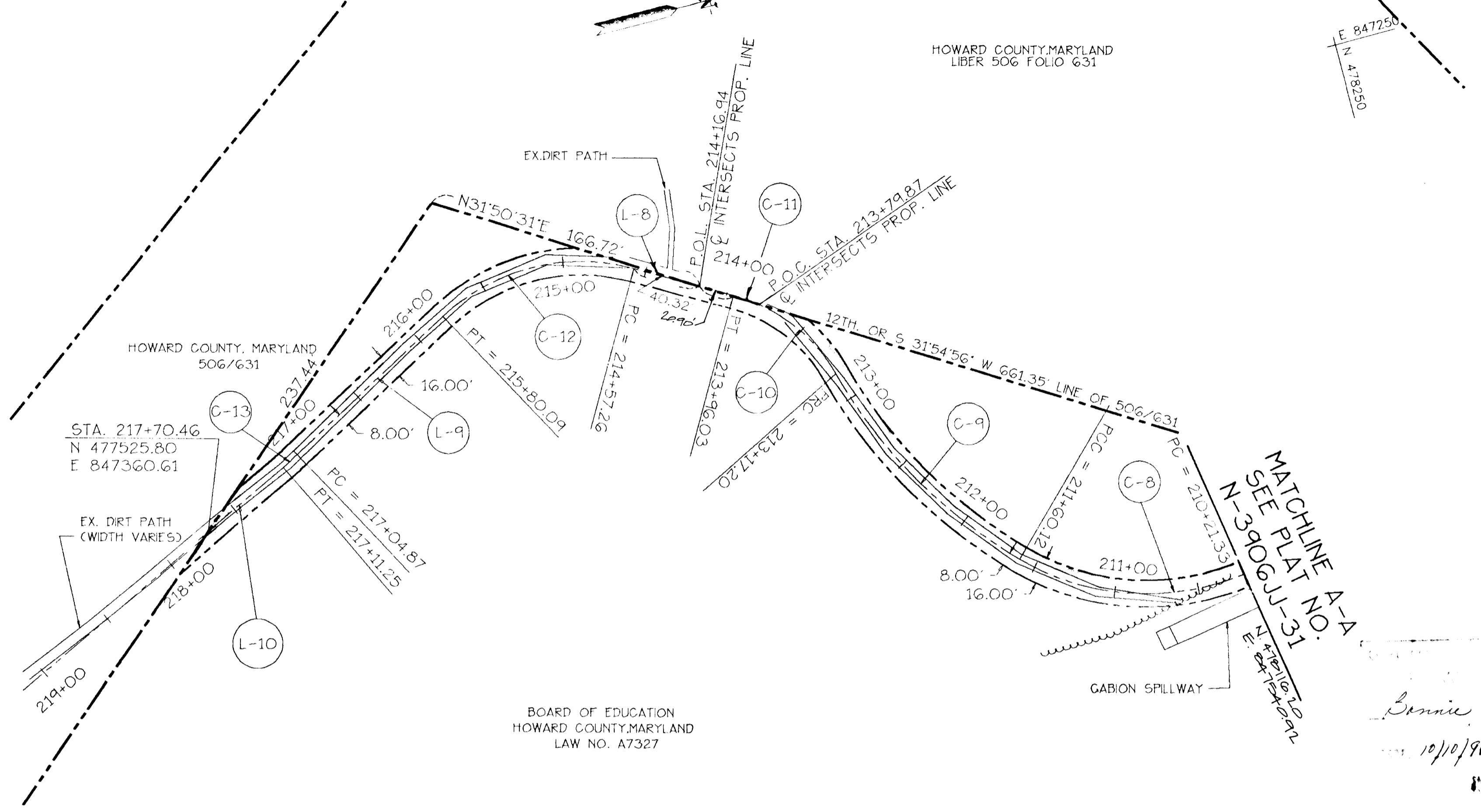
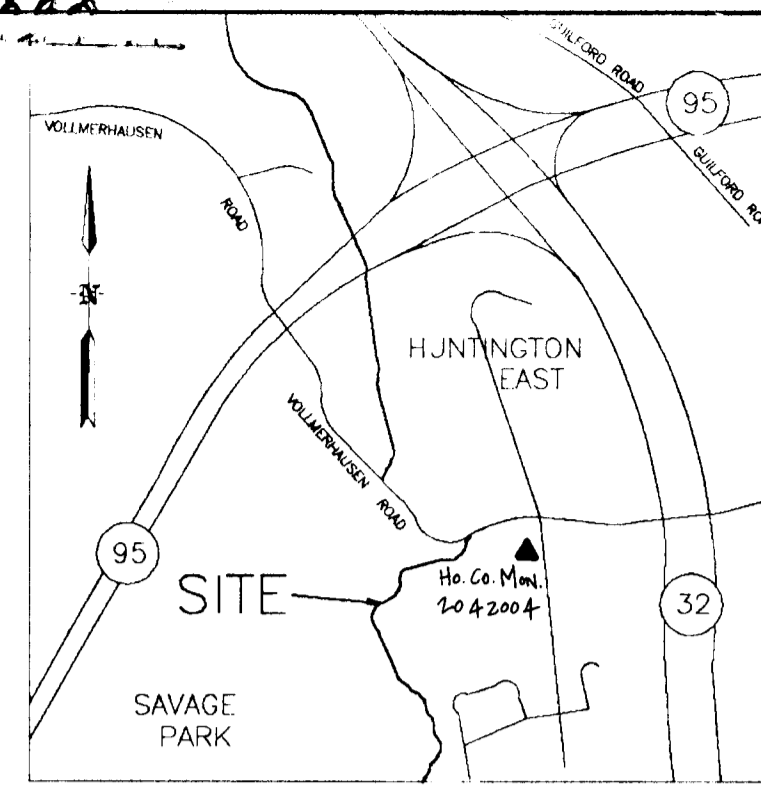


NOTE: COORDINATES SHOWN HEREON ARE BASED ON HOWARD COUNTY GEODETIC SYSTEM POINT NOS. 2341002 & 2241011. NAD-27 DATUM.

LEGEND

PATHWAY EASEMENT:
27,276 S.F. OR 0.6262 AC. MORE OR LESS
PLATS N-3906JJ-31 & 32.



LINE DATA

LINE	DIRECTION	DISTANCE
L-8	S29°49'23"W	61.22'
L-9	S28°49'27"E	124.79'
L-10	S25°54'07"E	59.21'

CURVE DATA

CURVE	RADIUS	LENGTH	TANGENT	CHORD	BEARING	DELTA
C-8	150.00'	138.79'	74.81'	133.89'	S18°29'09"W	53°00'49"
C-9	300.00'	157.08'	80.38'	155.29'	S59°59'34"W	30°00'00"
C-10	100.00'	62.67'	32.40'	61.65'	S57°02'22"W	57°02'22"
C-11	100.00'	16.17'	8.10'	16.15'	S34°27'17"W	09°15'48"
C-12	120.00'	122.83'	67.41'	117.54'	S00°29'58"W	58°38'50"
C-13	125.00'	6.38'	3.19'	6.37'	S27°21'47"E	02°55'20"

TO THE BEST OF MY KNOWLEDGE AND BELIEF I CERTIFY THIS CORRECT.

Warren W. Soris
WARREN W. SORIS
PROFESSIONAL LAND SURVEYOR MD. NO. 10858
DATE: 4/15/94.

Bonnie Best-Free
10/10/96

No.	REVISION	BY	DATE

PLAT NO. N-3906JJ-32
HOWARD COUNTY DEPARTMENT OF PUBLIC WORKS
PATHWAY EASEMENT
BOARD OF EDUCATION OF HOWARD COUNTY
TAX MAP 47 PARCEL 25
LAW NO. A7327
6TH. ELECTION DISTRICT
HOWARD COUNTY, MARYLAND

APPROVED
REAL ESTATE SER. DIV.
Tina C. Harbeck 8/1/96
BUREAU OF ENGINEERING
Bennett C. Howard 2/1/96

PREPARED BY:
gpi

GREENMAN-PEDERSEN INC.
ENGINEERS/ARCHITECTS/PLANNERS/SURVEYORS
14504 GREENVIEW DRIVE, SUITE 100
LAUREL, MD. 20708
WASH. (301) 470-2772 BALT. (410) 880-3055
DRAWN BY: NB & C.L.I.
CHECKED BY: W.W.S.