

COORDINATES

NO.	NORTH	EAST
265	552951.34	1348813.11
266	552953.30	1348844.24
267	553125.86	1349006.83
268	553096.93	1349014.75

COORDINATES SHOWN HEREON ARE BASED ON THE MARYLAND STATE GRID SYSTEM NAD'83 AS PROJECTED BY HOWARD COUNTY MONUMENTS 41C2 AND 42BB.

E 1348700  
N 553250

LEGEND

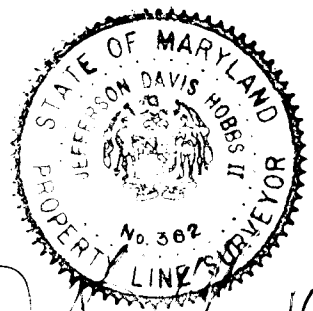
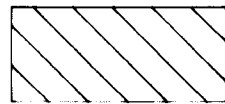
- CCG= COMBINATION CONC. CURB & GUTTER
- ⊙ = STORM DRAIN MANHOLE
- SS= SANITARY SEWER MANHOLE
- ⊙ = CONC. STORM DRAIN INLET
- ⊙ = DECIDUOUS TREE OR SHRUB
- ⊙ = EVERGREEN TREE OR SHRUB

LINE	DIRECTION	DISTANCE
L1	N26°31'42"E	5.84'
L2	S41°50'44"W	14.44'

AREA TABULATION	
7,586 SQ.FT. OR 0.174 ACRES±	

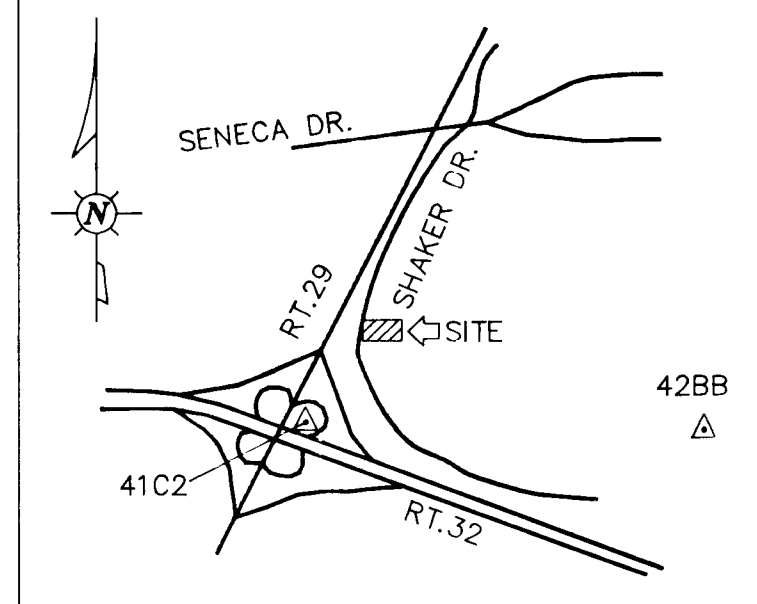
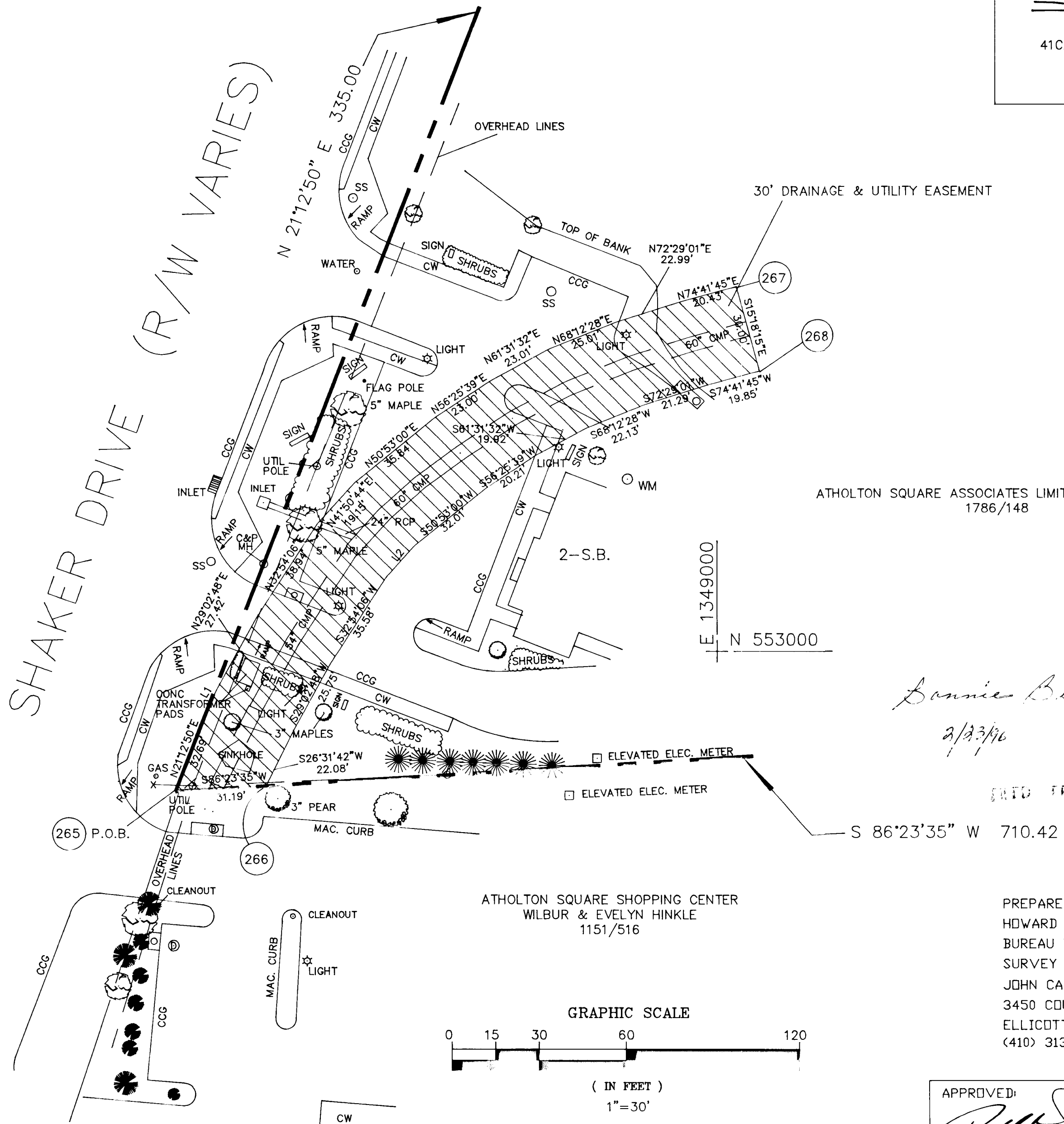
NOTES

1. THIS EASEMENT IS BASED ON A FIELD RUN AND MONUMENTED BOUNDARY SURVEY BY THE HOWARD COUNTY SURVEY DIVISION ON OR ABOUT SEPT. 1, 1995.
2. EASEMENT IS BASED ON THE EXISTING STORM DRAIN AS LOCATED FROM WITHIN THE PIPE.
3. AREA OF EASEMENT HATCHED AS SHOWN.



JEFFERSON D. HOBBS  
PROPERTY LINE SURVEYOR  
NO. 362 DATE:

PLAT NO. D-1114-1  
CAP. PROJ. NO. D-1114  
SCALE: 1"= 30'  
DATE: SEPT. 25, 1995  
COMPUTED BY: AMB  
DRAWN BY: CAD  
CHECKED BY: JDH  
FILE: C:\ACADR13\WIN\ATHD1T2.DWG



VICINITY MAP  
(NO SCALE)

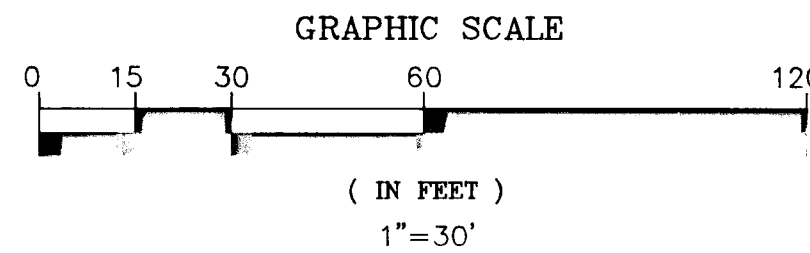
ATHOLTON SQUARE ASSOCIATES LIMITED PARTNERSHIP  
1786/148

ATHOLTON SQUARE SHOPPING CENTER  
WILBUR & EVELYN HINKLE  
1151/516

*Bonnie Best-Few*  
2/23/96

DATED: FEB 23, 1996

PREPARED BY:  
HOWARD COUNTY DPW  
BUREAU OF ENGINEERING  
SURVEY / DRAFTING DIVISION  
JOHN CARROLL BUILDING  
3450 COURT HOUSE DRIVE  
ELLCOTT CITY, MD. 21043  
(410) 313-2417



PLAT OF A DRAINAGE AND UTILITY EASEMENT  
ATHOLTON SQUARE ASSOCIATES LIMITED PARTNERSHIP  
TO  
HOWARD COUNTY, MARYLAND

TAX MAP 36 PARCELS 63,189,& 287 LIBER 1786 FOLIO 148 SIXTH ELECTION DISTRICT

APPROVED:  
*Paul D. Sepperson* 11/8/95  
BUREAU OF ENGINEERING DATE  
*Tina D. Haskell* 2/23/96  
REAL ESTATE SERVICES DIVISION DATE