

PLAN
SCALE: 1"=50'

Handwritten notes:
 REVISIONS
 Bonnie Best-nee
 8/8/96
 FEB 09 1997

COORDINATES		
NUMBER	NORTHING	EASTING
1	564223.600	1349065.109
2	564234.054	1349057.864
3	564367.057	1349043.146
4	564478.822	1349024.133
5	564676.518	1348992.254
6	564679.772	1349012.799

LINE TABLE		
LINE	DIRECTION	DISTANCE
L1	N 34°42'21" W	12.72'
L2	N 06°19'00" W	133.82'
L3	N 09°39'15" W	113.37'
L4	N 09°09'32" W	200.25'
L5	N 81°00'00" E	20.80'
L6	S 06°32'30" E	459.16'
CSL-1	S 06°32'30" E	21.19'
CSL-2	N 34°42'21" W	33.92'
CSL-3	N 06°19'00" W	136.05'
CSL-4	N 09°39'15" W	113.12'
CSL-5	N 09°09'32" W	210.30'
CSL-6	N 80°54'08" E	31.26'
CSL-7	S 06°32'30" E	10.05'

AREA TABULATION	
AREA OF EASEMENT	= 5,021 SF OR 0.115 AC.
AREA OF CONST. STRIP	= 5,028 SF 0.115 AC.

- NOTES:**
- THIS BOUNDARY IS BASED ON A FIELD-RUN SURVEY ON OR ABOUT MARCH 4, 1994, BY DFI, INC.
 - COORDINATES SHOWN HEREON ARE BASED ON HOWARD COUNTY CONTROL STATIONS 36AA AND 36DA, NAD-83.
 - EASEMENT AREA AS SHOWN:
 - CONSTRUCTION EASEMENT AREA HATCHED AS SHOWN:

NO.	REVISION	BY	DATE

APPROVED: DEPARTMENT OF PUBLIC WORKS

Signature: Sarah A. Calvo 12/6/95
 CHIEF: BUREAU OF ENGINEERING, DIV. TRAFFIC & WATERSHED

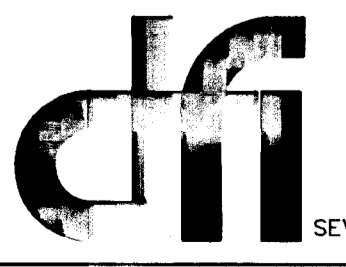
Signature: [illegible] 2-8-96
 CHIEF: SURVEY AND DRAFTING DIVISION

Signature: [illegible]
 CHIEF: REAL ESTATE SERVICES DIVISION

REVISIONS

Signature: Mark E. Powell
 4/11/94

MARK E. POWELL
 PROPERTY LINE SURVEYOR
 MARYLAND REG. No. 578



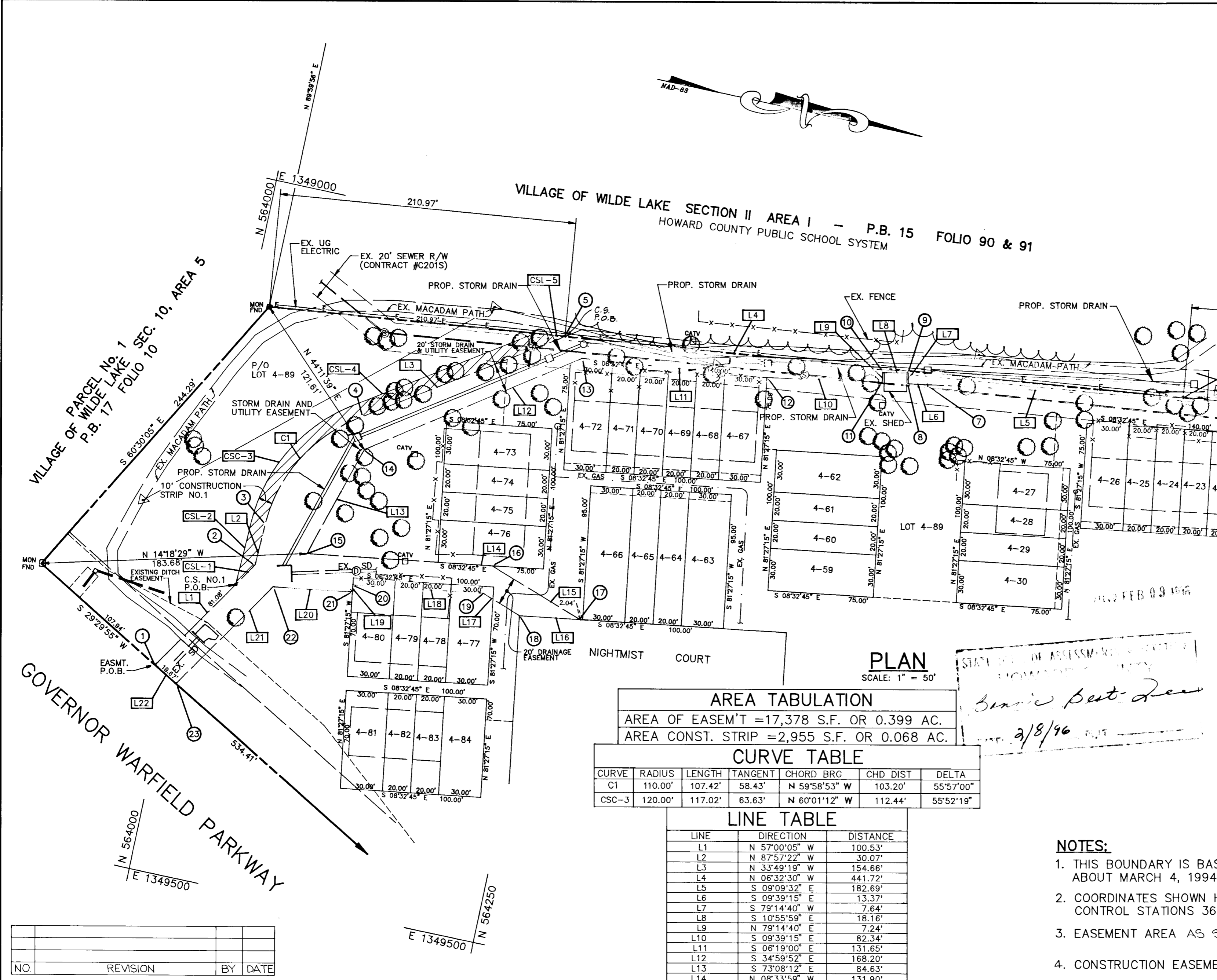
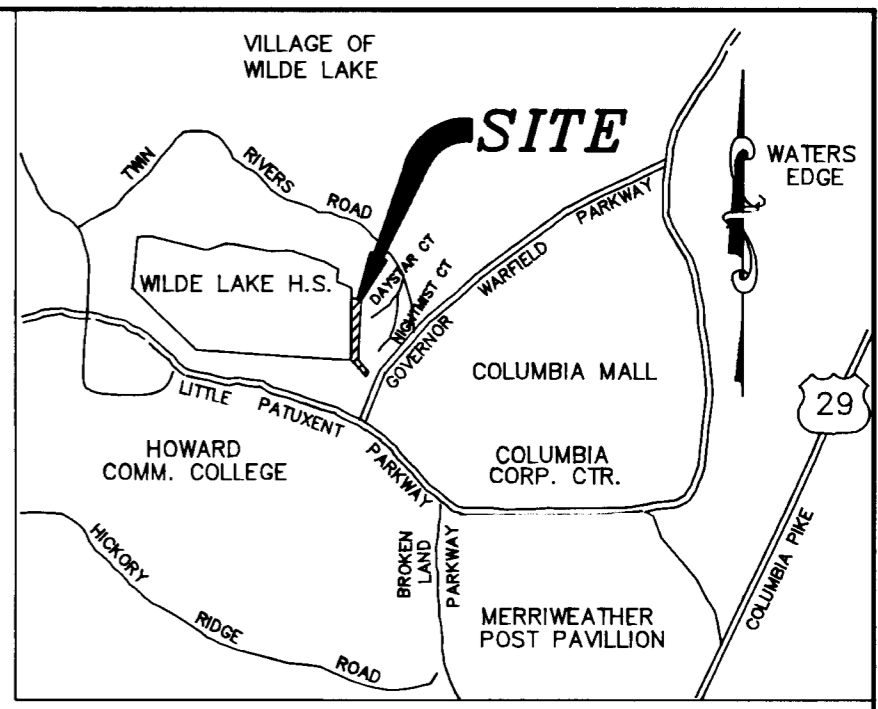
DEVELOPMENT FACILITATORS, INC.
 CONSULTING ENGINEERS, SURVEYORS,
 AND LAND PLANNERS

504 BALTIMORE-ANNAPOLIS BLVD.
 SEVERNA PARK, MD 21146 (410)647-2727

HOWARD COUNTY DEPARTMENT OF PUBLIC WORKS
 STORM DRAIN AND UTILITY EASEMENT
 VILLAGE OF WILDE LAKE - SECTION 11, AREA 1
 BOARD OF EDUCATION OF HOWARD COUNTY

TAX MAP 29 PARCEL 280 LIBER 506 FOLIO 213
 5th ELECTION DISTRICT HOWARD COUNTY, MARYLAND

PROJECT NAME: BRYANT SQUARE DRAINAGE IMPROVEMENTS
 SCALE: AS SHOWN SHEET No. 1 OF 1
 JOB No. AS SHOWN
 DATE: 11-95 PROJECT No.: D-1078T PLAT No. D-1078T-2



COORDINATES

NUMBER	NORTHING	EASTING
1	563987.661	1349354.913
2	564042.409	1349270.604
3	564043.482	1349240.552
4	564095.110	1349151.197
5	564223.600	1349065.109
6	564662.448	1349014.786
7	564482.090	1349043.864
8	564468.907	1349046.107
9	564467.481	1349038.601
10	564449.656	1349042.044
11	564451.006	1349049.152
12	564369.837	1349062.960
13	564238.983	1349077.445
14	564101.197	1349173.915
15	564076.848	1349254.902
16	564207.078	1349235.255
17	564275.941	1349259.232
18	564233.454	1349265.616
19	564205.170	1349255.768
20	564113.222	1349269.618
21	564113.966	1349274.575
22	564058.240	1349282.948
23	564005.101	1349364.780

AREA TABULATION

AREA OF EASEM'T = 17,378 S.F. OR 0.399 AC.
 AREA CONST. STRIP = 2,955 S.F. OR 0.068 AC.

CURVE TABLE

CURVE	RADIUS	LENGTH	TANGENT	CHORD BRG	CHD DIST	DELTA
C1	110.00'	107.42'	58.43'	N 59°58'53" W	103.20'	55°57'00"
CSC-3	120.00'	117.02'	63.63'	N 60°01'12" W	112.44'	55°52'19"

LINE TABLE

LINE	DIRECTION	DISTANCE
L1	N 57°00'05" W	100.53'
L2	N 87°57'22" W	30.07'
L3	N 33°49'19" W	154.66'
L4	N 06°32'30" W	441.72'
L5	S 09°09'32" E	182.69'
L6	S 09°39'15" E	13.37'
L7	S 79°14'40" W	7.64'
L8	S 10°55'59" E	18.16'
L9	N 79°14'40" E	7.24'
L10	S 09°39'15" E	82.34'
L11	S 06°19'00" E	131.65'
L12	S 34°59'52" E	168.20'
L13	S 73°08'12" E	84.63'
L14	N 08°33'59" W	131.90'
L15	N 19°11'52" E	72.92'
L16	S 08°32'45" E	42.96'
L17	S 19°11'52" W	29.95'
L18	S 08°33'59" E	92.99'
L19	N 81°27'15" E	5.01'
L20	S 08°32'42" E	56.35'
L21	S 57°00'05" E	97.57'
L22	S 29°29'55" W	20.04'
CSL-1	S 57°00'05" E	19.44'
CSL-2	N 87°57'22" W	46.74'
CSL-4	N 33°49'19" W	135.12'
CSL-5	N 06°32'30" W	21.82'

- NOTES:**
- THIS BOUNDARY IS BASED ON A FIELD-RUN SURVEY ON OR ABOUT MARCH 4, 1994, BY DFI, INC.
 - COORDINATES SHOWN HEREON ARE BASED ON HOWARD COUNTY CONTROL STATIONS 36AA AND 36DA, NAD-83.
 - EASEMENT AREA AS SHOWN:
 - CONSTRUCTION EASEMENT AREA HATCHED AS SHOWN:

APPROVED: DEPARTMENT OF PUBLIC WORKS

Chief: Bureau of Engineering, acting
Elizabeth de Calcia 10/10/95

Chief: Survey and Drafting Division
[Signature] 11-08-95

Chief: Real Estate Services Division
[Signature]

REVISIONS

MARK E. POWELL
 PROPERTY LINE SURVEYOR
 MARYLAND REG. No. 578

dfi DEVELOPMENT FACILITATORS, INC.
 CONSULTING ENGINEERS, SURVEYORS,
 AND LAND PLANNERS

504 BALTIMORE-ANNAPOLIS BLVD.
 SEVERNA PARK, MD 21146 (410)647-2727

HOWARD COUNTY DEPARTMENT OF PUBLIC WORKS
STORM DRAIN AND UTILITY EASEMENT
 VILLAGE OF WILDE LAKE - SECTION 10, AREA 4
 TAX MAP 36 PARCEL 361 LIBER 641 FOLIO 231
 5th ELECTION DISTRICT HOWARD COUNTY, MARYLAND
 LOT 4-89 BRYANT SQUARE COMMUNITY ASSOC. INC.

PROJECT NAME: BRYANT SQUARE DRAINAGE IMPROVEMENTS
 SCALE: AS SHOWN
 SHEET No. 1 OF 1
 JOB No. AS SHOWN

DATE: 7-95 PROJECT No.: D-1078T
 PLAT No. D-1078T-1

E.K. VIEWARD/SOPLAT.DWG 3-6-95 J.C. : REVISION-E.K. VIEWARD/SOPLAT.DWG/CONSERV-8-8-95