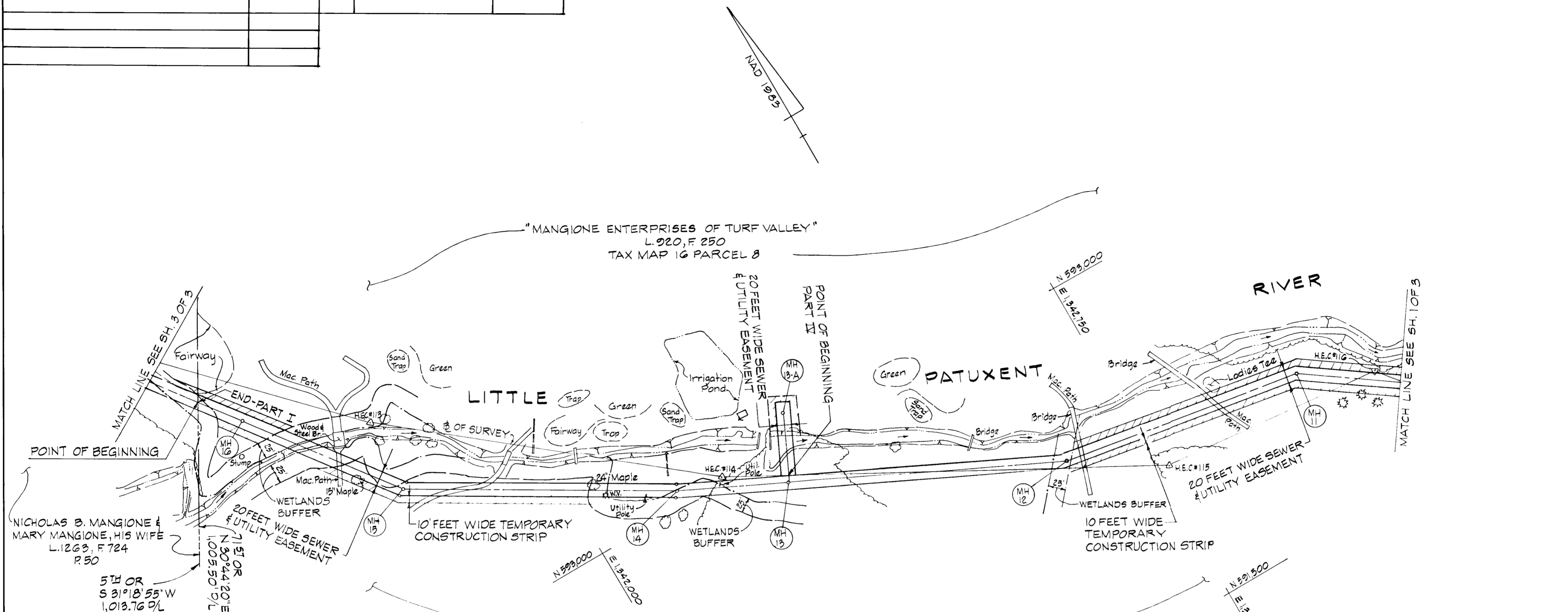




REVISION DESCRIPTION	DATE	SEWER & UTILITY EASEMENT



**PART I**

TAX MAP 16; PARCEL 8  
MANGIONE ENTERPRISES  
OF TURF VALLEY  
L. 220, F. 250

FROM	TO	COURSE	DISTANCE
MH 10	MH 11	N 54° 57' 04" W	220.33'
MH 11	MH 12	N 80° 25' 59" W	354.01'
MH 12	MH 13	N 64° 02' 37" W	300.40'
MH 13	MH 14	N 64° 33' 08" W	160.66'
MH 14	MH 15	N 59° 21' 26" W	380.76'
MH 15	MH 16	N 36° 43' 45" W	240.20'
MH 16	MH 17	N 36° 50' 10" W	380.02'

AREA = 83,374.0 SQ. FT. OR 1.914 AC.

**PART IV**

TAX MAP 16; PARCEL 8  
MANGIONE ENTERPRISES  
OF TURF VALLEY  
L. 220, F. 250

FROM	TO	COURSE	DISTANCE
P.O.B.	END EASEMENT	N 25° 12' 42" E	104.72'

AREA = 2,004.4 SQ. FT. OR 0.046 AC.

POINT	NORTH	EAST
MH 11	502719.36	1,342,000.77
MH 16	503420.46	1,341,653.05

**NOTES:**

- COORDINATES BASED ON NAD 83, MARYLAND COORDINATE SYSTEM, AS PROJECTED BY HOWARD COUNTY GEODETIC CONTROL. STATIONS: 16 E 1 & 16 H 3
- THIS PLAT BASED ON A FIELD SURVEY BY HICKS ENGINEERING CO., INC. - DATED 7/04

**H** HICKS ENGINEERING CO., INC.  
ENGINEERS, SURVEYORS & PLANNERS  
200 EAST JOPPA ROAD - SUITE 402  
TOWSON, MARYLAND 21286

SEWER & UTILITY EASEMENT  
TEMPORARY CONSTRUCTION STRIP

APPROVED:  
REAL ESTATE SERVICES  
*Tina D. Hackett* 1/17/96  
DATE

BUREAU  
OF ENGINEERING  
*H. J. Knell, Jr.* 9/20/95  
HENRY J. KNELL, JR.  
NO. 484

HOWARD COUNTY DEPARTMENT OF PUBLIC WORKS

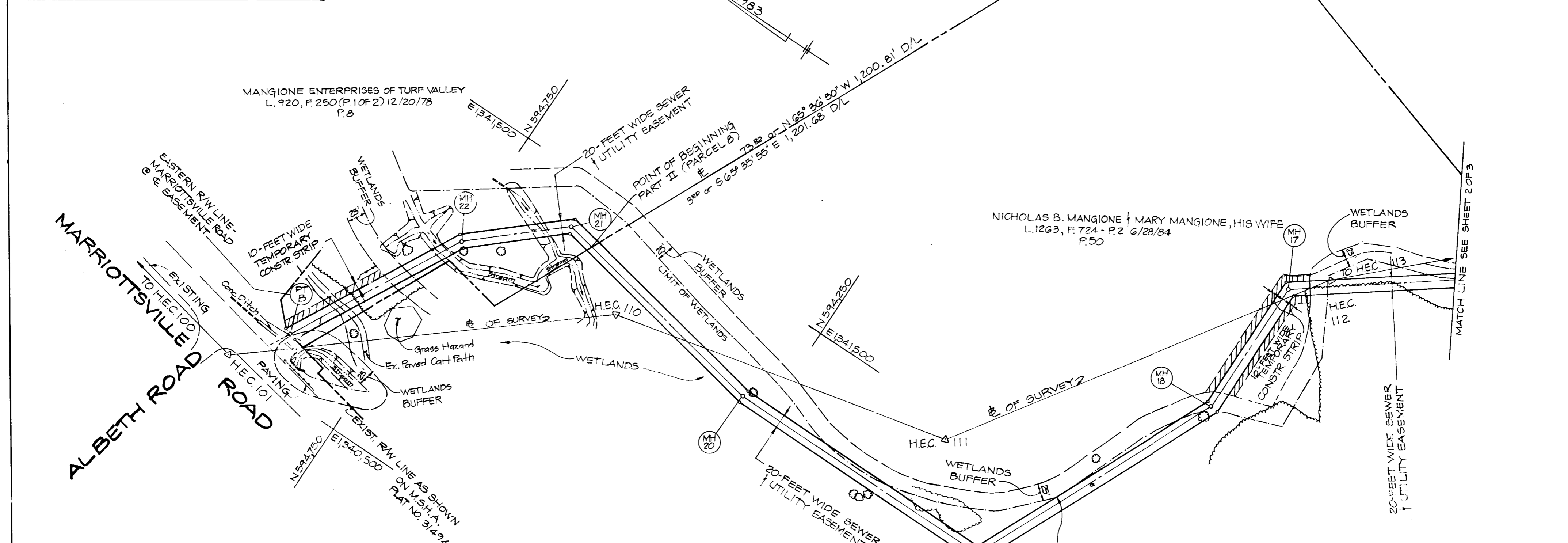
**SEWER AND UTILITY EASEMENT  
FOR  
ALBETH HEIGHTS  
THIRD ELECTION DISTRICT  
HOWARD COUNTY, MARYLAND**

DRAWN BY: F.W.  
CHECKED BY: H.J.K., JR.

PLAT NO. W-8195-2  
CAP. PROJ. NO. W-8195  
SCALE: 1" = 100'  
DATE: SEPTEMBER 15, 1995  
SHEET NO. 2 OF 3

*Bonnie Best Dec*  
2/1/96

REVISION	DESCRIPTION	DATE	SEWER & UTILITY EASEMENT



**PART II**

TAX MAP 16; PARCEL 8  
MANGIONE ENTERPRISES OF  
TURF VALLEY  
L. 920, F. 250

FROM	TO	COURSE	DISTANCE
PT. B	MH 21	N11° 12' 47" E	40.73'
MH 21	MH 22	N41° 22' 23" W	158.03'
MH 22	PT. B	N62° 06' 52" W	279.84'

AREA = 9,570.0 SQ. FT. OR 0.220 ± AC.

TAX MAP 16; PARCEL 50  
NICHOLAS B. MANGIONE &  
MARY MANGIONE, HIS WIFE  
L. 1263, F. 724

FROM	TO	COURSE	DISTANCE
MH 17	MH 18	S89° 51' 56" W	200.81'
MH 18	MH 19	N65° 26' 37" W	397.44'
MH 19	MH 20	N00° 13' 10" E	400.82'
MH 20	PT. B	N11° 12' 47" E	291.91'

AREA = 32,484.05 SQ. FT. OR 0.746 ± AC.

POINT	NORTH	EAST
MH 17	593,724.62	1,341,425.22
'B'	594,876.95	1,340,579.54

**NOTES:**

- COORDINATES BASED ON NAD 83, MARYLAND COORDINATE SYSTEM, AS PROJECTED BY HOWARD COUNTY GEODETIC CONTROL STATIONS: 1G11 & 1G13
- THIS PLAT BASED ON FIELD SURVEY BY HICKS ENGINEERING CO., INC. - DATED 7/94

SEWER & UTILITY EASEMENT

TEMPORARY CONSTRUCTION STRIP

**H** HICKS ENGINEERING CO., INC.  
ENGINEERS, SURVEYORS & PLANNERS  
200 EAST JOPPA ROAD - SUITE 402  
TOWSON, MARYLAND 21286

APPROVED:  
REAL ESTATE SERVICES  
DATE: 1-22-95  
BUREAU OF ENGINEERING  
DATE: 1-22-95  
HENRY J. KNELL, JR.  
NO 484

HOWARD COUNTY DEPARTMENT OF PUBLIC WORKS  
**SEWER AND UTILITY EASEMENT FOR ALBETH HEIGHTS THIRD ELECTION DISTRICT**  
HOWARD COUNTY, MD.

DRAWN BY: R.W.  
CHECKED BY: H.J.K., JR.  
PLAT NO. W-8195-3  
CAP. PROJ. NO. W-8195  
SCALE: 1" = 100'  
DATE: SEPTEMBER 15, 1995  
SHEET NO. 3 OF 3

*Bonnie Best-ace*  
2/1/96