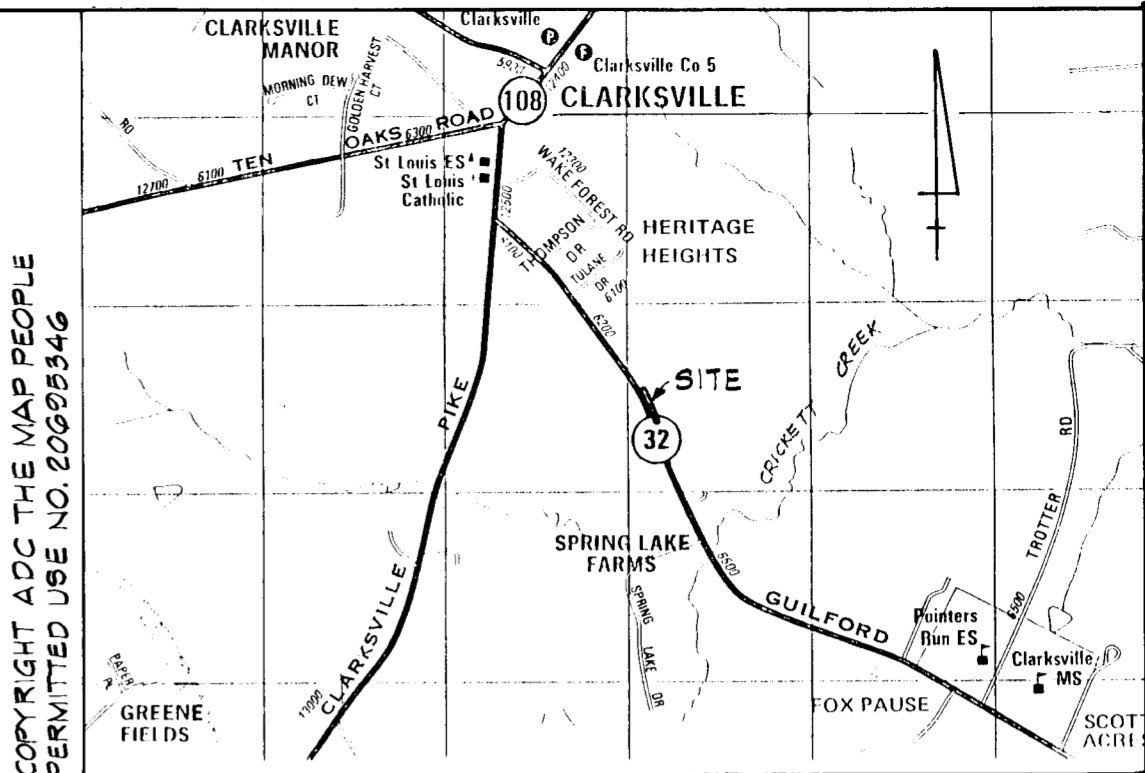
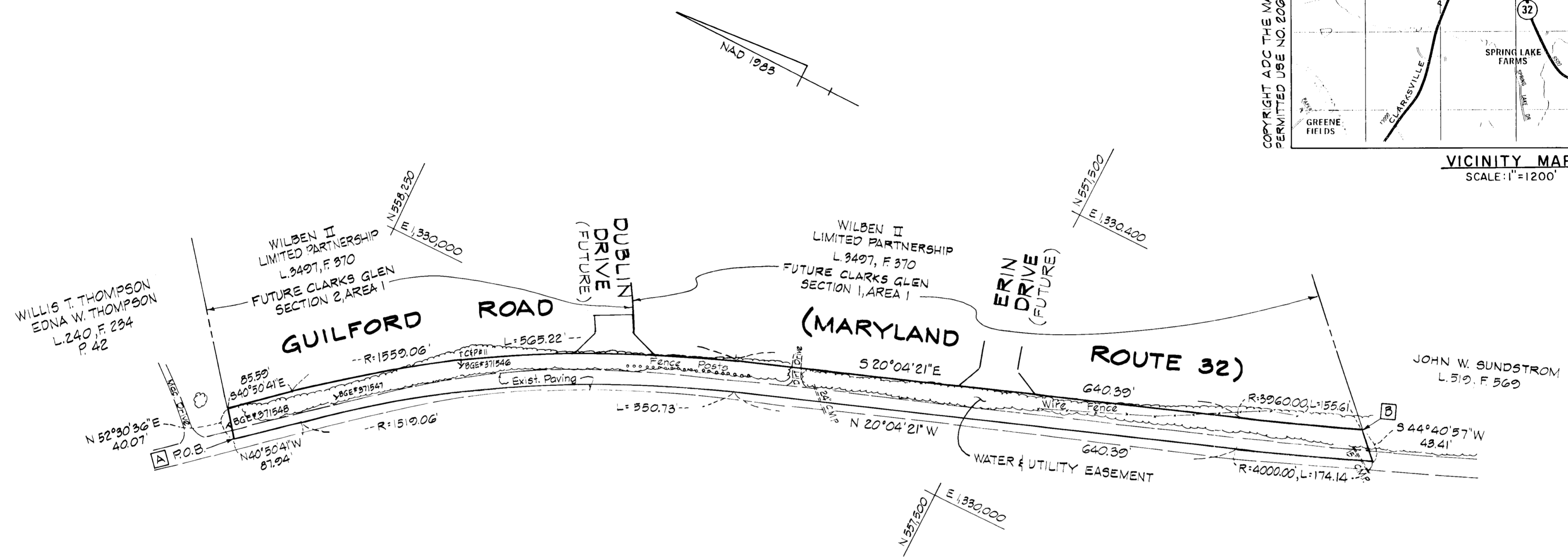


REVISION DESCRIPTION	DATE	WATER & UTILITY EASEMENT



VICINITY MAP  
SCALE: 1" = 1200'



*B. Best - Dec*  
*1/24/96*

WATER & UTILITY EASEMENT  
= 58,587.50 SQ. FT. OR 1.335 AC.

POINT	NORTH	EAST
A	558,328.44	1,322,667.65
B	557,056.95	1,330,316.43

- NOTES:
- COORDINATES BASED ON NAD 83, MARYLAND COORDINATE SYSTEM, AS PROJECTED BY HOWARD COUNTY GEODETIC CONTROL. STATIONS: 34 CA & 35 GA.
  - THIS PLAT BASED ON A FIELD SURVEY BY HICKS ENGINEERING CO., INC. - DATED 7/94

**H** HICKS ENGINEERING CO., INC.  
ENGINEERS, SURVEYORS & PLANNERS  
200 EAST JOPPA ROAD - SUITE 402  
TOWSON, MARYLAND 21286

APPROVED:  
REAL ESTATE SERVICE  
*Tina O. Hackett 12/24/95*  
DATE  
BUREAU OF ENGINEERING  
*H. J. Knell, Jr.*  
DATE  
HENRY J. KNELL, JR.  
NO. 484

HOWARD COUNTY DEPARTMENT OF PUBLIC WORKS  
**WATER AND UTILITY EASEMENT FOR GUILFORD ROAD**  
FIFTH ELECTION DISTRICT  
HOWARD COUNTY, MARYLAND

DRAWN BY: F.W.  
CHECKED BY: H.J.K. JR.  
PLAT NO. W-8194-13  
CAP. PROJ. NO. W-8194  
SCALE: 1" = 100'  
DATE: OCTOBER 6, 1995  
SHEET NO 1 OF 1