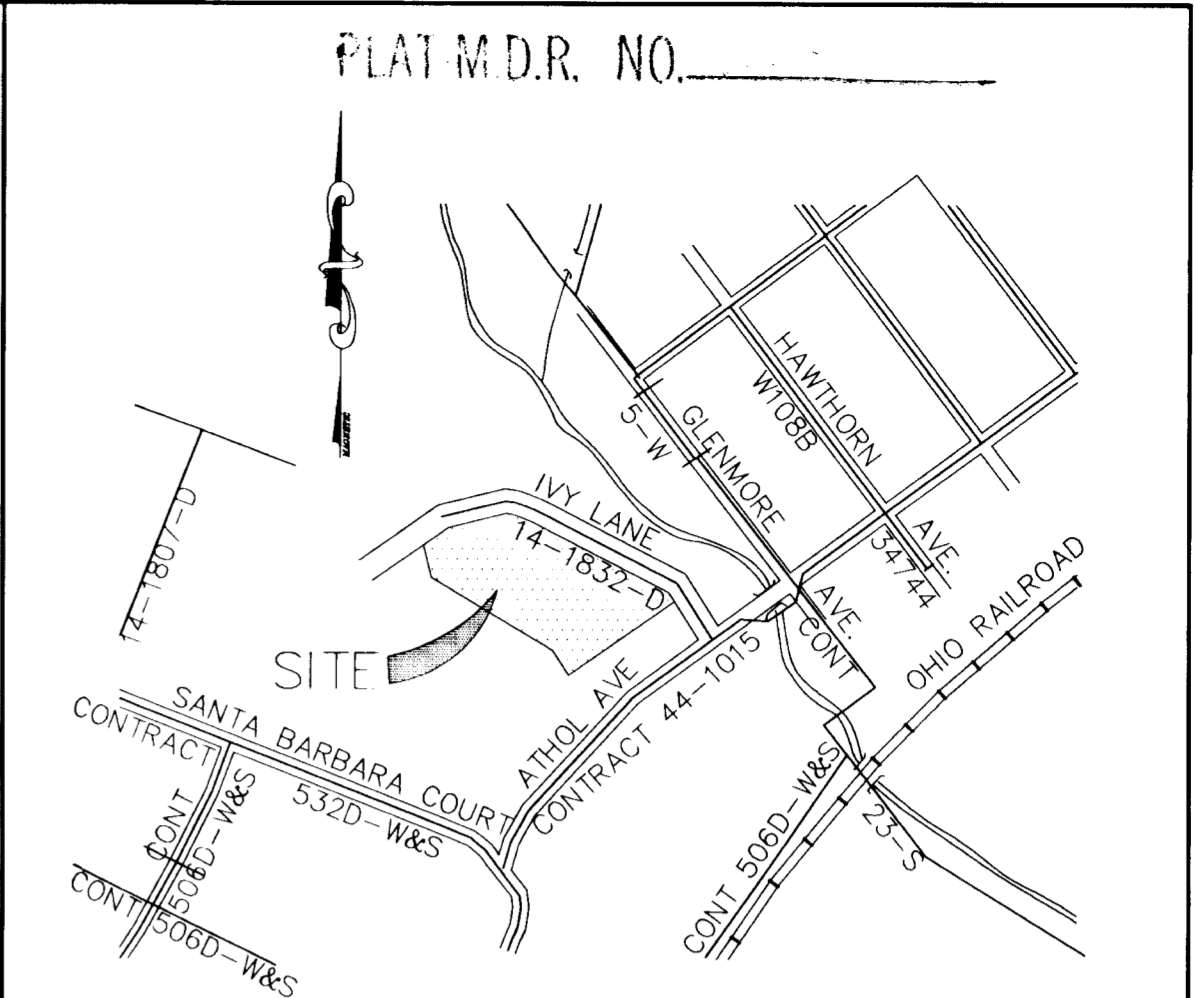
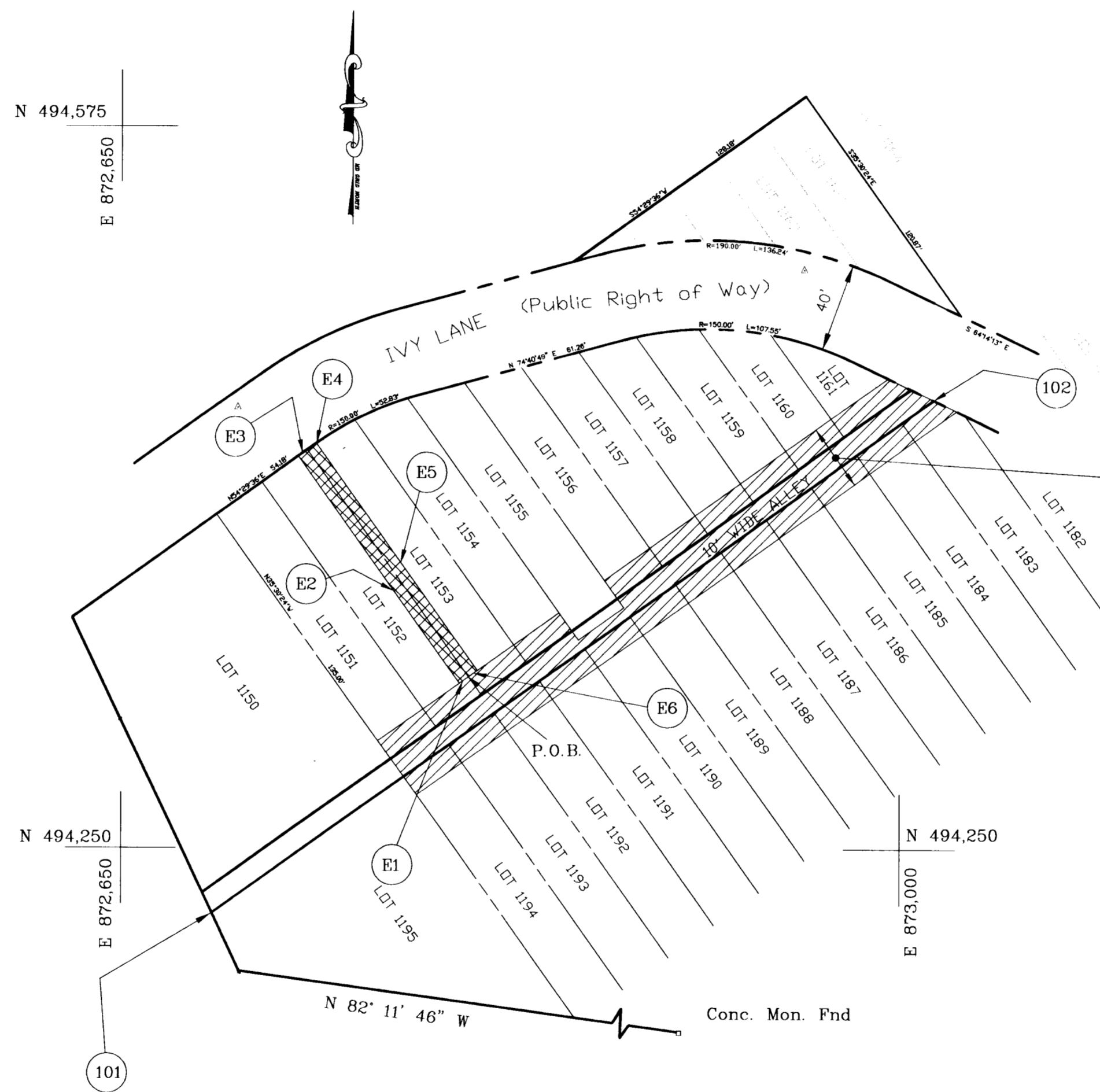


LINE TABLE			
E1	S 54° 29' 36" W	5.00	
E2	N 35° 30' 24" W	125.00	
E3	N 54° 29' 36" E	9.18	
E4	SEE CURVE DATA		
E5	S 35° 30' 24" E	125.00	
E6	S 54° 29' 36" W	5.00	

CURVE DATA					
#	RADIUS	LENGTH	TANGENT	DELTA	CHORD BEARING AND DIST.
E4	150.00'	0.82'	0.41'	00°19'00"	N 54°39'00" E 0.82'



VICINITY MAP
SCALE 1" = 600'



EXISTING WATER, SEWER, AND UTILITY EASEMENT
LIBER: 3514 FOLIO: 191

Dennis Best
12/22/95

- Notes:
- Boundary indicated hereon is based on field run surveys performed by Boender Associates, Inc. in March 1995, as verified by this office.
 - Coordinates shown are based on Howard County Control Stations 2647005 and 2647006, NAD 27.

New Easment area.
 Existing Easment area.

COORDINATE TABLE		
101	N 494220.8904	E 872790.9773
102	N 494452.2551	E 873115.2596

Area of Easment = 1,250 sq. ft. or 0.029 acres +/-

SCALE: 1"=50'

John B. Aldenberg
Prof. Land Surveyor
Md. Reg. No. 10718

PLAT NO. S-6695-3

MILDENBERG, BOENDER & ASSOC., INC.
Engineers Planners Surveyors
5072 Dorsey Hall Drive, Suite 202, Ellicott City, Maryland 21042
(410) 997-0296 Balt. (301) 621-5521 Wash. (410) 997-0298 Fax.

Engineering	JBM		
Illustration	JBM		
Approval			
Project	95018	1 Added Easement to Lots 1152 & 1153 Lot Lines	sd 12/15/95
Date	June 2, 1995	NO REVISION	By DATE

Howard County Department of Public Works
Water, Sewer and Utility Easement
ROGERS AVENUE REALTY
TAX MAP 39 PARCEL 873 - Lots 1151 through 1154 and 1156 through 1162 & 1182 through 1194
1ST ELECTION DISTRICT
HOWARD COUNTY, MARYLAND

Approved:
John B. Aldenberg 12-22-95
Bur. of Eng. Date
Real Estate Ser. Div. Date