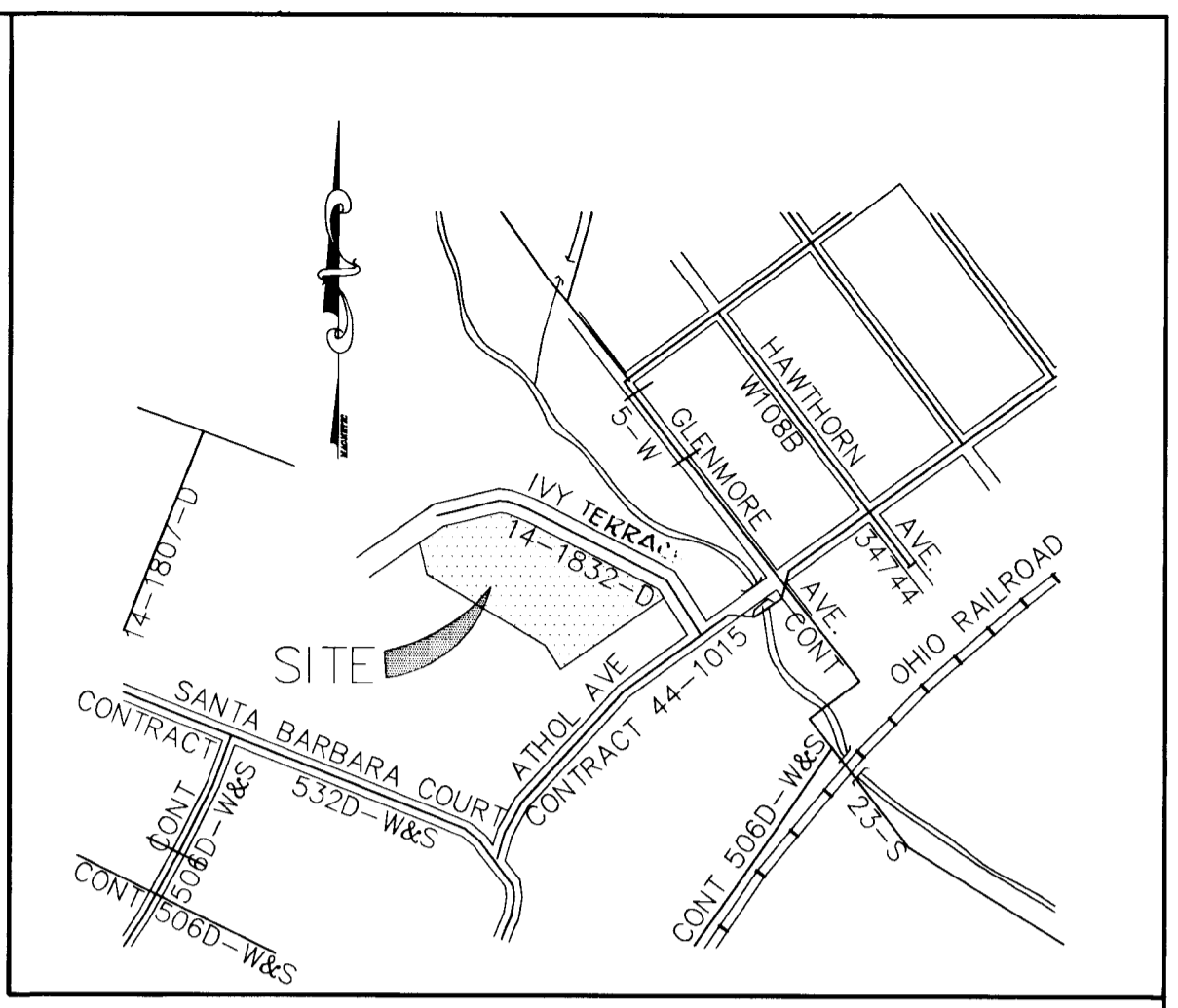
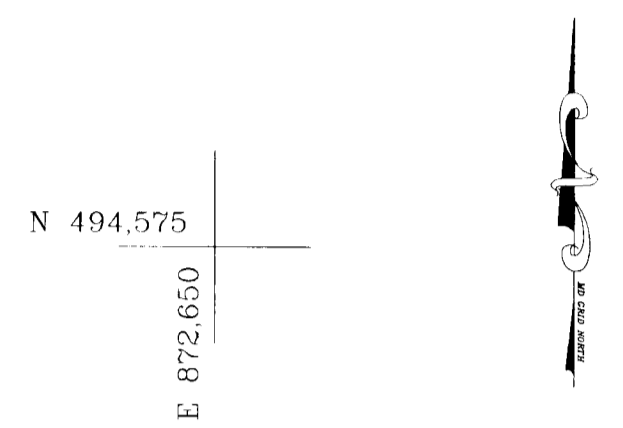


LINE TABLE			
E1	N	35° 30' 24"	W 10.00
E2	N	54° 29' 36"	E 25.00
E3	S	35° 30' 24"	E 10.00
E4	S	35° 30' 24"	E 5.00
E5	S	54° 29' 36"	W 25.00
E6	N	35° 30' 24"	W 10.00

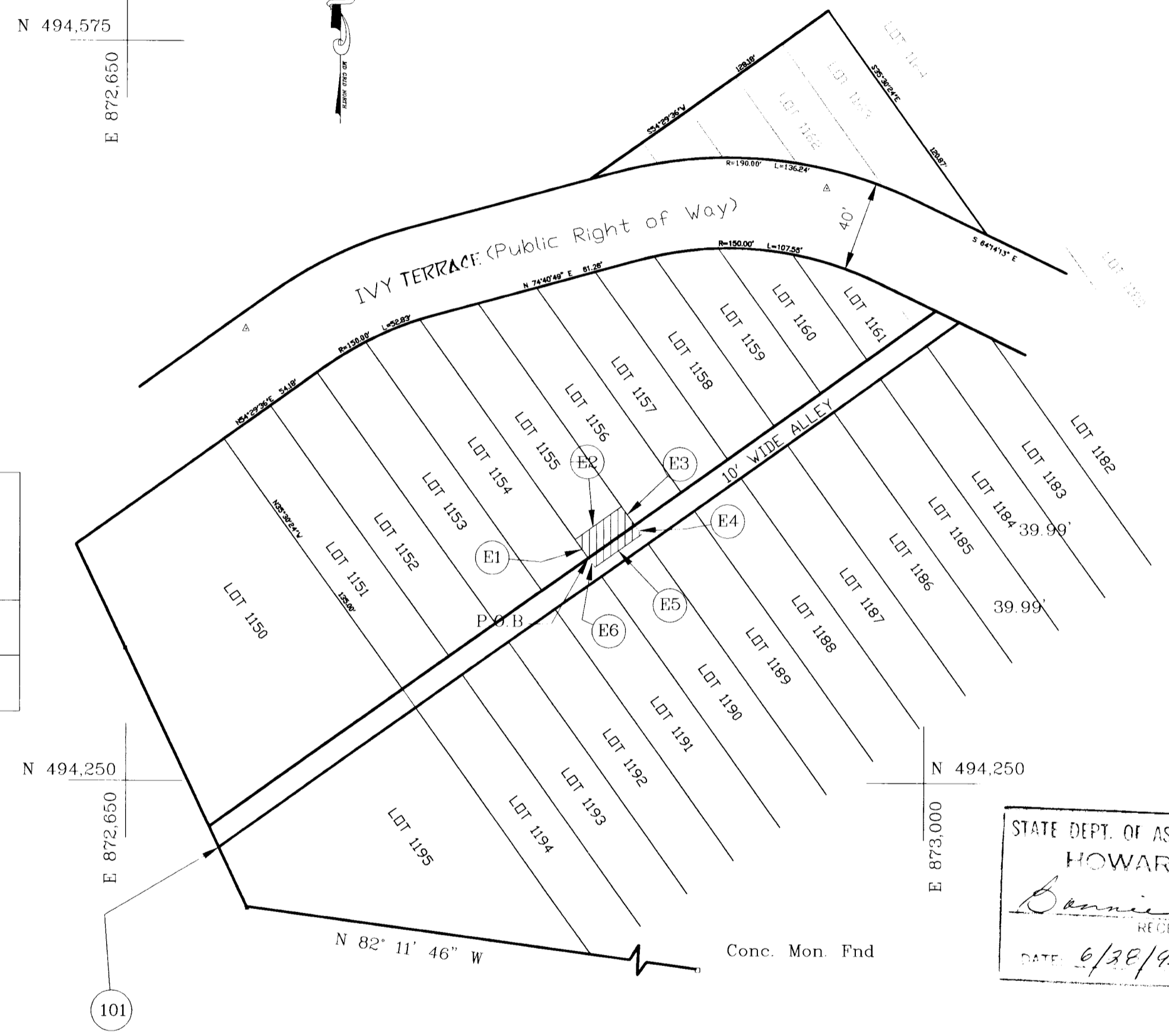


VICINITY MAP

SCALE 1" = 600'

PLAT M.D.R. NO. 1177

COORDINATE TABLE			
101	N	494220.8904	E 872790.9773
102	N	494452.2551	E 873115.2596



- Notes:
1. Boundary indicated hereon is based on field run surveys performed by Boender Associates, Inc. in March 1995, as verified by this office.
 2. Coordinates shown are based on Howard County Control Stations 2647005 and 2647006, NAD 27.
 3. Easement area is shown cross hatched.

STATE DEPT. OF ASSESSMENTS & TAXATION
 HOWARD COUNTY
Bonnie Post-Tree
 RECEIVED BY
 DATE 6/30/95 PLAT _____

Area of Easement = 375 sq. ft. or 0.0086 acres +/-

John B. Mildenberg
 John B. Mildenberg
 Prof. Land Surveyor
 Md. Reg. No. 10718

PLAT NO. S-6695-1

**MILDENBERG,
 BOENDER & ASSOC., INC.**
 Engineers Planners Surveyors
 5072 Dorsey Hall Drive, Suite 202, Ellicott City, Maryland 21042
 (410) 997-0296 Balt. (301) 621-5521 Wash. (410) 997-0298 Fax.

engineering	JBM			
illustration	JBM			
approval				
project	95018			
date	June 2, 1995	NO.	REVISION	By DATE

Howard County Department of Public Works
 Water, Sewer and Utility Easement
BOENDER PROPERTIES, INC.
 TAX MAP 39 PARCEL 873 - Lots 1155
 1ST ELECTION DISTRICT
 HOWARD COUNTY, MARYLAND

Approved
Oy Dan Line 6-7-95
 Buf. of Eng Date
Tara D. Hackitt 6/7/95
 Real Estate Ser. Div. Date