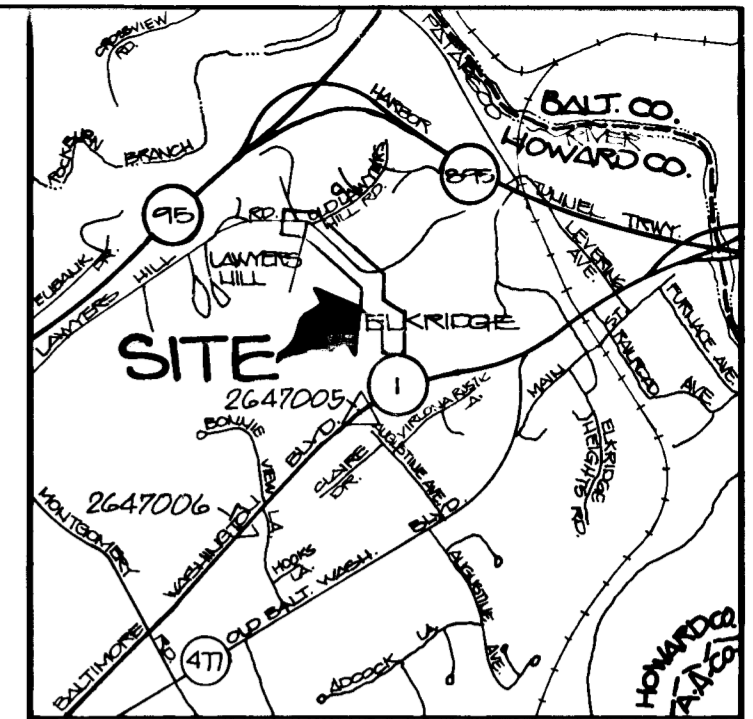


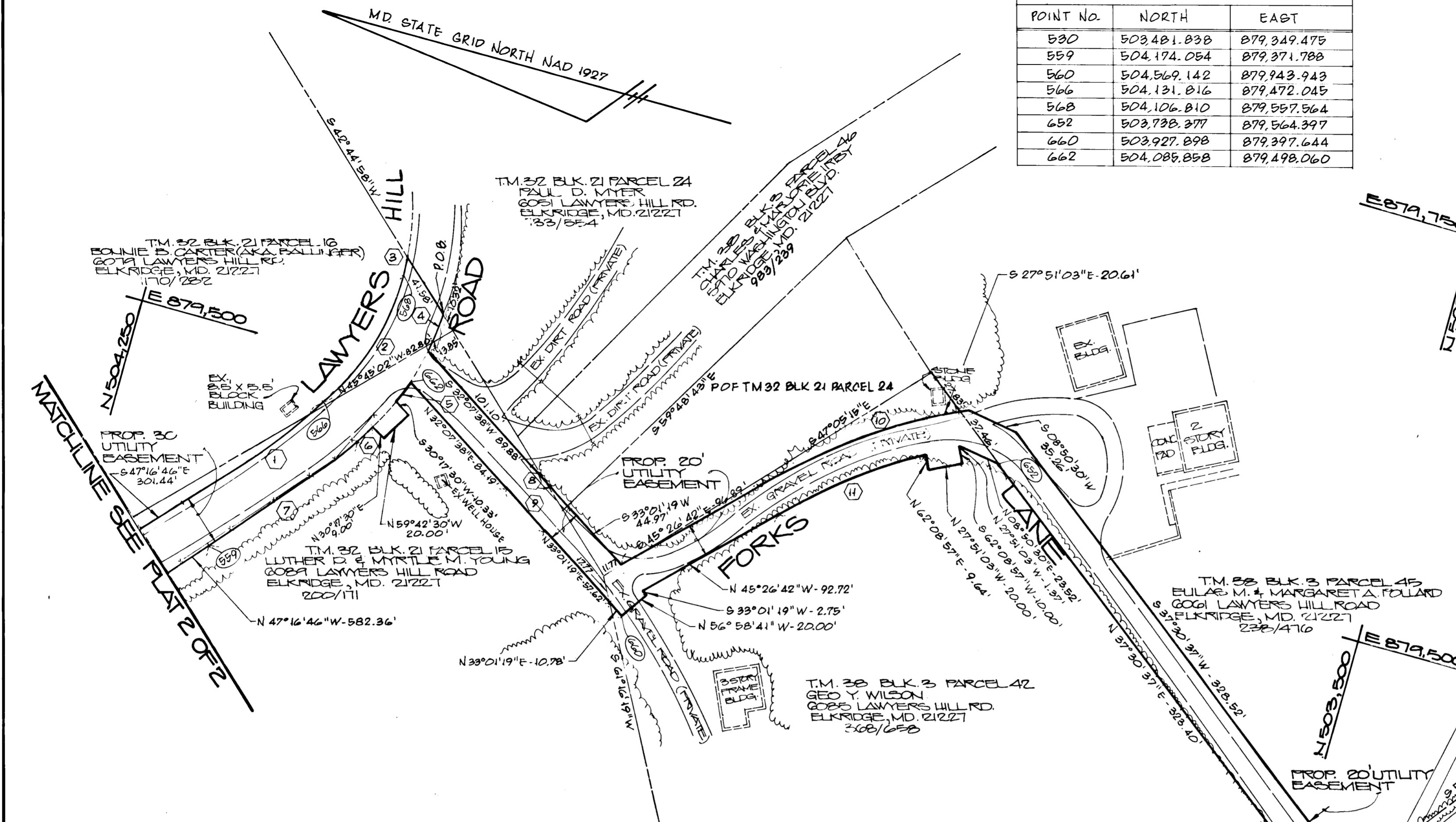
COORDINATES		
POINT NO.	NORTH	EAST
530	503,481.838	879,349.475
559	504,174.054	879,371.788
560	504,569.142	879,943.943
566	504,131.816	879,472.045
568	504,106.810	879,557.564
652	503,738.377	879,564.397
660	503,927.898	879,397.644
662	504,085.858	879,498.060



VICINITY MAP
SCALE: 1" = 2000'

GENERAL NOTES

1. BEARING ANGLES BASED ON NAD 27 MARYLAND COORDINATE SYSTEM AS PROJECTED BY HOWARD COUNTY GEODETIC CONTROL STATIONS NO. 2647005 AND 2647006
2. THIS PLAT IS BASED ON A FIELD RUN AND MONUMENTED BOUNDARY SURVEY PERFORMED ON OR ABOUT OCTOBER, 1992 BY THE HOWARD COUNTY BUREAU OF ENGINEERING, SURVEY AND DRAFTING DIVISION.



CURVE TABLE

CURVE NO.	RADIUS	ARC LENGTH	DELTA	TANGENT	CHORD BEARING & DISTANCE
1	854.47	102.73	006°53'18"	51.43	S 51°10'53"E - 102.67'
2	146.53	90.53	035°23'58"	46.76	S 73°42'01"E - 89.10'
3	190.39	11.61	003°29'34"	5.80	N 85°12'04"E - 11.60'
4	176.53	22.88	007°25'37"	11.46	N 82°02'14"W - 22.87'
5	176.53	14.64	004°45'11"	7.33	N 69°09'16"W - 14.64'
6	176.53	13.52	004°23'22"	6.77	N 58°04'32"W - 13.52'
7	884.47	106.80	006°55'07"	53.47	N 51°11'19"W - 106.74'
8	410.00	35.63	004°58'46"	17.83	S 32°05'09"W - 35.62'
9	390.00	34.60	005°04'59"	17.31	N 32°04'24"E - 34.59'
10	410.00	107.47	015°01'08"	54.05	S 37°24'01"E - 107.16'
11	390.00	94.02	013°48'44"	47.24	N 37°59'24"W - 93.79'

Bonnie Best-Jee

10/38/93

FILED NOV 1 1993 PREPARED FOR HOWARD COUNTY D.P.W. BY:

dfi CONSULTING ENGINEERS, SURVEYORS AND LAND PLANNERS
504 BALTIMORE / ANNAPOLIS BLVD.
P.O. BOX 964
SEVERNA PARK, MD 21146
PHONE (301) 647-2727



JEFFERSON D. HOBBS II
REG. PROP. LINE SURVEYOR
NO. 362 DATE:

APPROVED
James M. Carruso 7/14/93
DEPT. OF PUBLIC WORKS DATE
Op. D. Carruso 6-1-93
BUREAU OF ENGINEERING DATE
Tina D. Bennett 6-14-93
REAL ESTATE SERVICES DATE

PLAT 1 OF 2
CAP. PROJECT NO. W-8179
SCALE: 1" = 50'
DATE: JAN. 1993
COMPUTED BY: M.E.P.
DRAWN BY: R.P.D.
CHECKED BY: M.E.P.
PLAT NUMBER

HOWARD COUNTY, MARYLAND
LAWYERS HILL ROAD
WATER EXTENSION UTILITY EASEMENT

