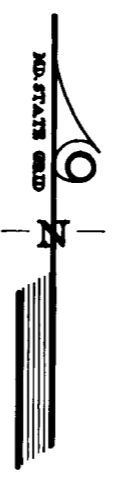
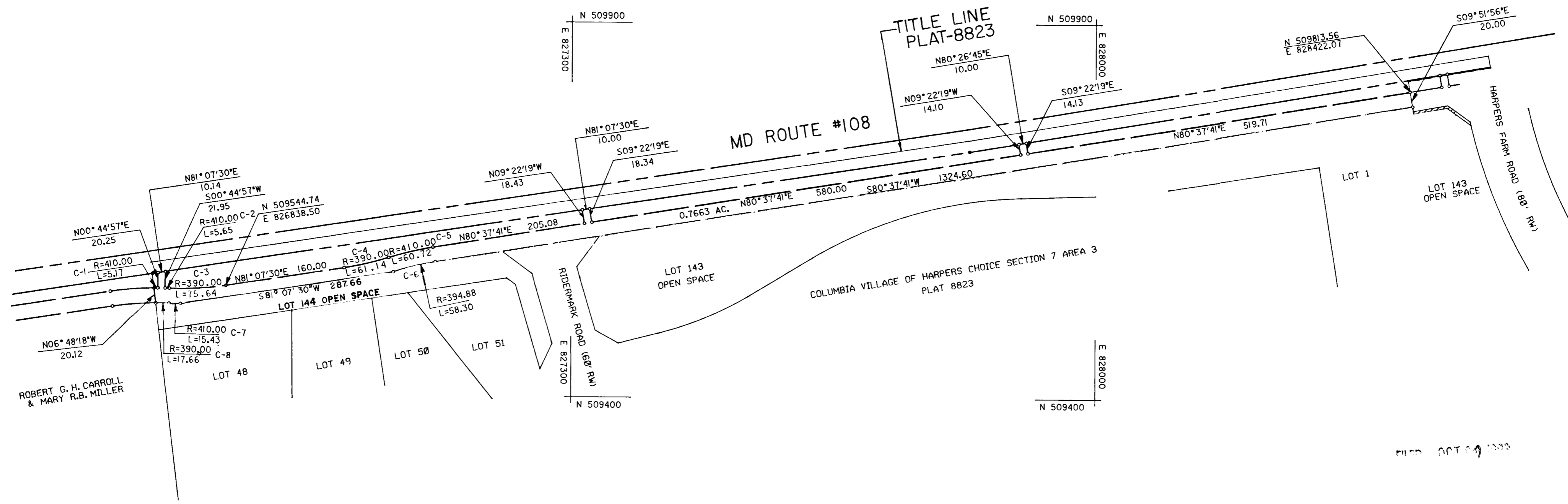


LOCATION MAP
SCALE: 1"=2000'



NOTE: COORDINATES SHOWN HEREON ARE
BASED ON HOWARD COUNTY GEODETIC
CONTROL MONUMENT NOS. 2636001 &
2637002



FILED OCT 9 1993

NO.	RADIUS	LENGTH	TANGENT	DELTA	CHORD BEARING	DISTANCE
C-1	410.00'	5.17'	2.59'	00° 43' 21"	N89° 41' 21"E	5.17'
C-2	410.00'	5.65'	2.83'	00° 47' 23"	S88° 09' 26"E	5.65'
C-3	390.00'	75.64'	37.94'	11° 06' 46"	N86° 40' 53"E	75.52'
C-4	390.00'	61.14'	30.63'	08° 58' 56"	N76° 38' 02"E	61.08'
C-5	410.00'	60.72'	30.42'	08° 29' 07"	N76° 23' 07"E	60.66'
C-6	394.88'	58.30'	29.20'	08° 27' 34"	S76° 23' 54"W	58.25'
C-7	410.00'	15.43'	7.72'	02° 09' 22"	N88° 50' 26"W	15.43'
C-8	390.00'	17.66'	8.32'	02° 35' 39"	N89° 03' 34"W	17.66'

Bonnie Best Lee
10/7/93

□ WATER AND UTILITY EASEMENT
0.7664 AC.

2-26-93

PLAT REVISION: DELETED CONSTRUCTION STRIP LINES IN
OPEN SPACE LOTS 143 AND 144, LABELED TITL E LINE PLAT 8823
MD ROUTE 108

<p>HARRIS SMARIGA, MATZ, INC. PLANNERS / ENGINEERS / SURVEYORS 104 CHURCH LANE, SUITE 100 BALTIMORE, MARYLAND 21208 (410)-486-1511 FAX (410)-486-2573</p>	<p>TO THE BEST OF MY KNOWLEDGE AND BELIEF I CERTIFY THIS CORRECT</p> <p><i>Karl F. Schmid</i> KARL F. SCHMID PROPERTY LINE SURVEYOR NO. 439</p>	<p>DRAWN BY: CHECKED BY: KFS</p>	<p>PLAT NO. W-8178-18 CAPITAL PROJ. NO. W-8178 SCALE 1" = 100" DATE</p>	<p>HOWARD COUNTY DEPARTMENT OF PUBLIC WORKS WATER AND UTILITY EASEMENT PROPERTY OF THE HOWARD RESEARCH AND DEVELOPMENT CORPORATION SECTION 7 AREA 3 PLAT 8823 FIFTH ELECTION DISTRICT HOWARD COUNTY, MARYLAND</p>	<p>APPROVED: BUREAU OF ENGINEERING</p> <p><i>[Signature]</i> DATE 3-9-93 LAND ACQUISITION <i>[Signature]</i> DATE 3-9-93</p>
--	---	---	--	--	--