

VICINITY MAP
1" = 2000'



N 509700
E 823600

N 509700
E 823600

N509496.52
E826335.23

MD ROUTE #108

-19 THRU 24 LINE OF 417/520

EDGE OF PAVING

16.80'
38.54'
56.50'
110.47'

3RD. LINE OF 1ST. EXCEPTION OF DEED L 1377 / 343 ETC.
CARRULL L 417 / 520 ETC.

MD ROUTE #108

Cultivated field

20' WATER AND UTILITY EASEMENT

Dense Trees

HOWARD RESEARCH AND DEVELOPMENT CORPORATION
LIBRE 1535 FOLIO 193

S.H.A. RIGHT-OF-WAY
PLAT NO. 49237

19 THRU 24 LINE OF 417/520

EDGE OF PAVING

20' WATER AND UTILITY EASEMENT

Dense Trees

P.O.B.
N 508876.41
E 824342.31

E 824400
N 508700

E 825000
N 508700

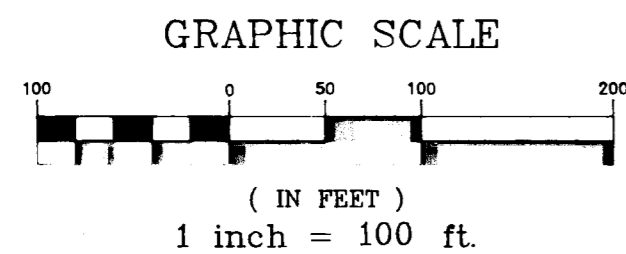
CURVE DATA

NO.	RADIUS	LENGTH	TANGENT	DELTA	CHORD BEARING	DISTANCE
C-1	458.24'	206.31'	104.97'	26°01'23"	N72°59'30"E	204.56'
C-2	801.66'	294.26'	148.80'	21°01'52"	N70°36'33"E	292.61'
C-3	781.66'	286.92'	145.09'	21°01'52"	S70°36'33"W	285.31'
C-4	478.24'	215.32'	109.52'	25°47'47"	S72°59'30"W	213.50'

NOTE: COORDINATES SHOWN HEREON ARE BASED ON HOWARD COUNTY GEODETIC CONTROL.

WATER AND UTILITY EASEMENT
1.0161 AC.

REVISED AUG. 20 1993
REVISED JULY 6 1993



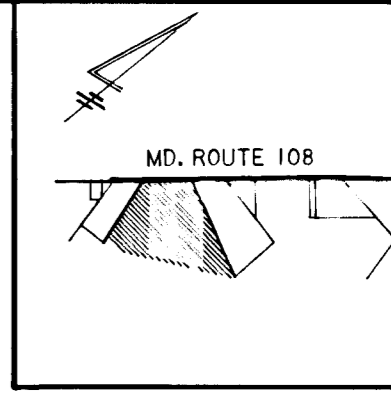

TO THE BEST OF MY KNOWLEDGE AND BELIEF I CERTIFY THIS PLAT TO BE CORRECT AS SHOWN.
Robert P. Grim
ROBERT P. GRIM
PROPERTY LINE SURVEYOR NO. 354

DRAWN BY: R. GRIM
SCALE: 1" = 100'

PLAT NO. W-8178-16
CAPITAL PROJ. NO. W-8178
SCALE: 1" = 100'
DATE: 18 MAY '93

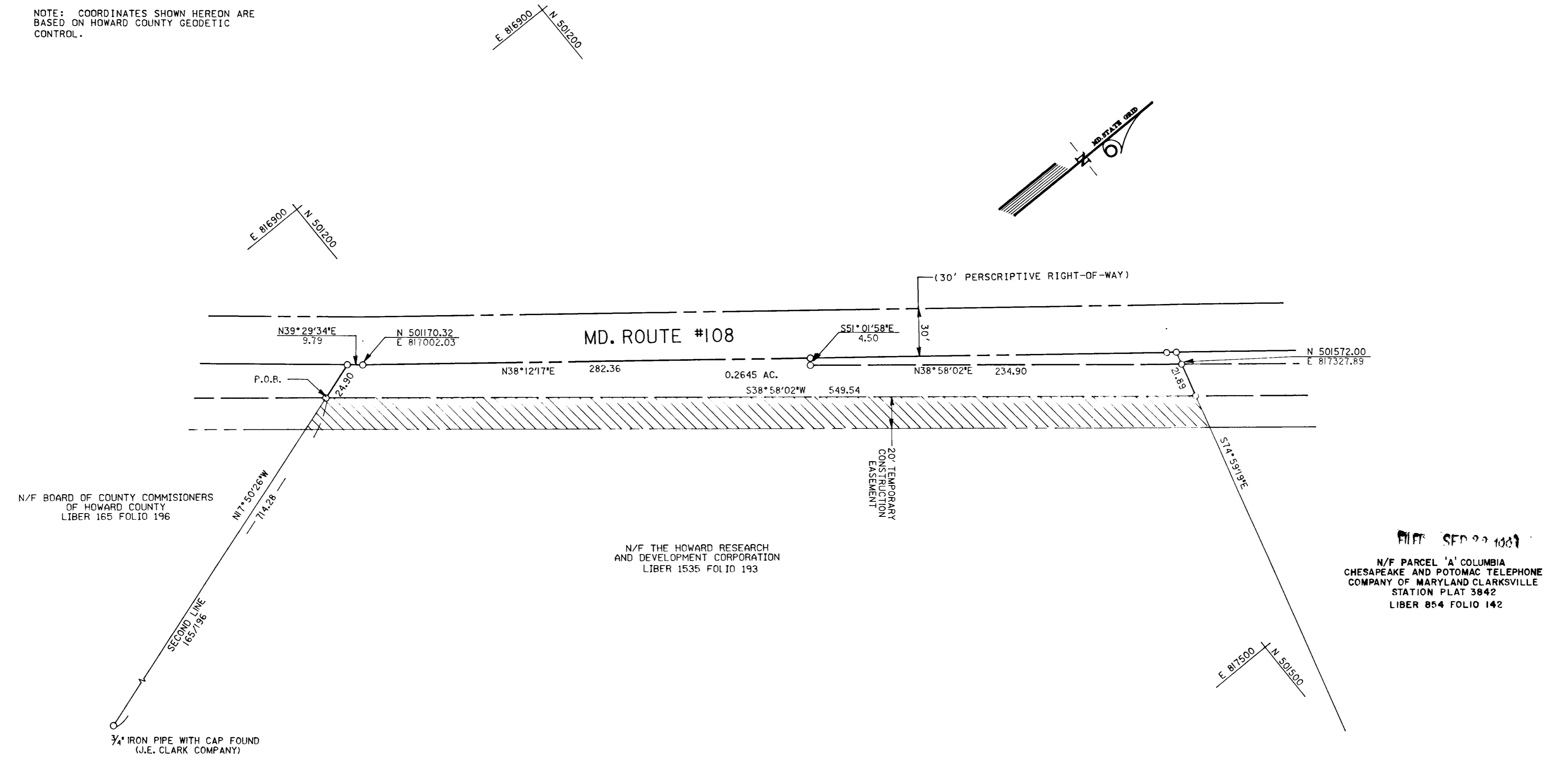
HOWARD COUNTY DEPARTMENT OF PUBLIC WORKS
WATER AND UTILITY EASEMENT
PROPERTY OF
THE HOWARD RESEARCH AND DEVELOPMENT CORPORATION
FIFTH ELECTION DISTRICT
HOWARD COUNTY, MARYLAND

APPROVED:
BUREAU OF ENGINEERING
[Signature] DATE: 5-27-93
LAND ACQUISITION
DATE: _____



LOCATION MAP
SCALE: 1"=2000'

NOTE: COORDINATES SHOWN HEREON ARE BASED ON HOWARD COUNTY GEODETIC CONTROL.



N/F BOARD OF COUNTY COMMISSIONERS OF HOWARD COUNTY LIBER 165 FOLIO 196

N/F THE HOWARD RESEARCH AND DEVELOPMENT CORPORATION LIBER 1535 FOLIO 193

FIFTH SELECTION DISTRICT
N/F PARCEL 'A' COLUMBIA CHESAPEAKE AND POTOMAC TELEPHONE COMPANY OF MARYLAND CLARKSVILLE STATION PLAT 3842 LIBER 854 FOLIO 142

3/4" IRON PIPE WITH CAP FOUND (J.E. CLARK COMPANY)

□ WATER AND UTILITY EASEMENT 0.2645 AC.
▨ TEMPORARY CONSTRUCTION EASEMENT 0.2574 AC.

Karen L. Price
9/22/93

2-26-93

<p>HARRIS, SMARIGA, MATZ, INC. PLANNERS / ENGINEERS / SURVEYORS 104 CHURCH LANE, SUITE 100 BALTIMORE, MARYLAND 21208 (410)-486-1511 FAX (410)-486-2573</p>	<p>TO THE BEST OF MY KNOWLEDGE AND BELIEF I CERTIFY THIS CORRECT</p> <p><i>Karl F. Schmid</i> KARL F. SCHMID PROPERTY LINE SURVEYOR NO. 439</p>	<p>DRAWN BY: SJB/JAM CHECKED BY: KFS</p>	<p>PLAT NO. W-8178-20 CAPITAL PROJ. NO. W-8178 SCALE 1" = 50' DATE SEPT 02, 1992</p>	<p>HOWARD COUNTY DEPARTMENT OF PUBLIC WORKS WATER AND UTILITY EASEMENT PROPERTY OF THE HOWARD RESEARCH AND DEVELOPMENT CORPORATION FIFTH ELECTION DISTRICT HOWARD COUNTY, MARYLAND</p>	<p>APPROVED: BUREAU OF ENGINEERING <i>O.D.L.</i> DATE 3-4-93 LAND ACQUISITION <i>O. Hooker</i> DATE 3-11-93</p>
---	---	--	--	---	---