

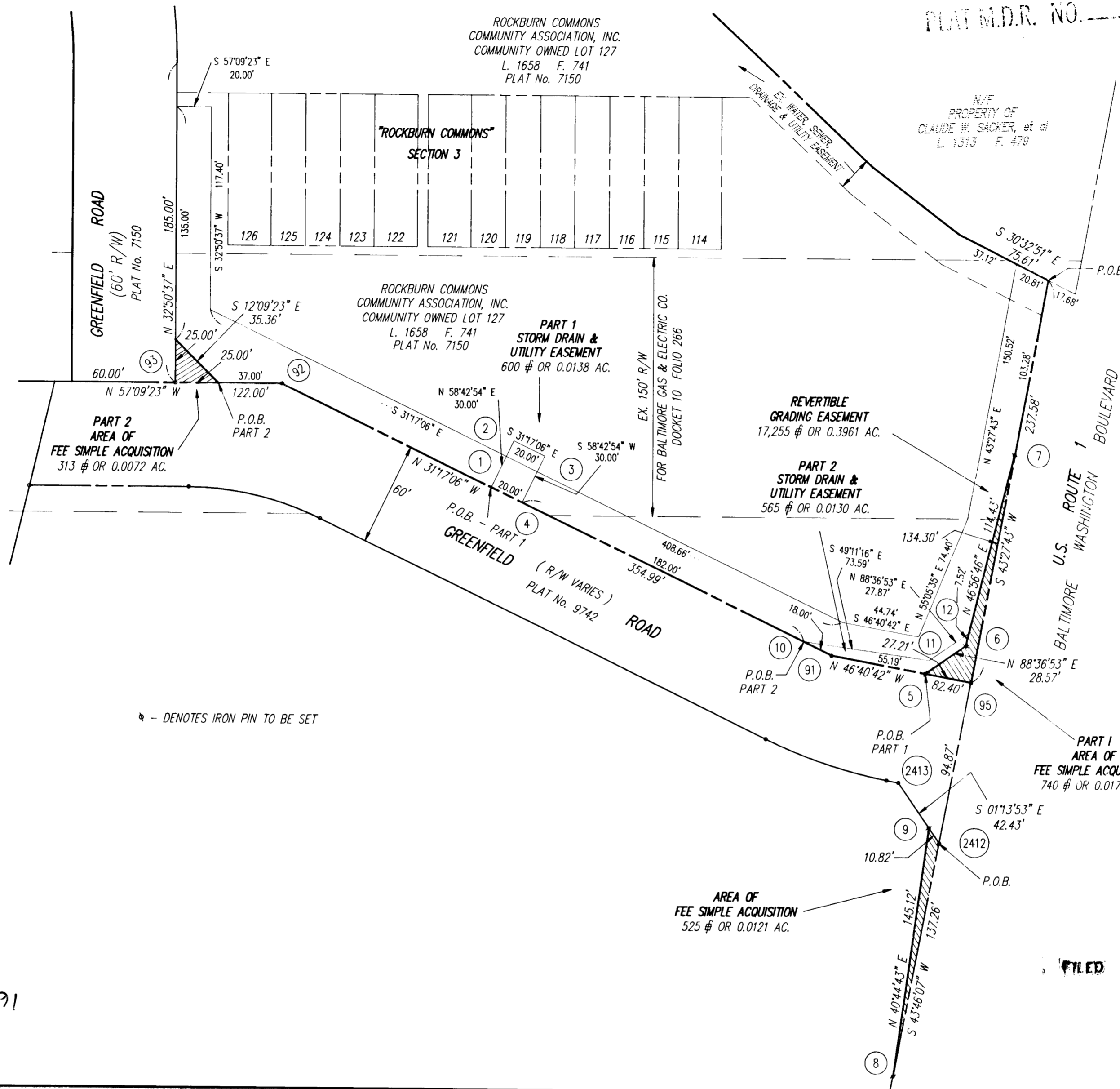
| COORDINATE TABLE | | |
|------------------|-----------|-----------|
| PT. # | NORTH | EAST |
| 1 | 499738.03 | 876150.58 |
| 2 | 499753.61 | 876176.21 |
| 3 | 499736.51 | 876186.60 |
| 4 | 499720.94 | 876160.96 |
| 5 | 499512.15 | 876304.97 |
| 6 | 499512.84 | 876333.53 |
| 7 | 499590.97 | 876417.15 |
| 8 | 499325.85 | 876164.19 |
| 9 | 499435.80 | 876258.91 |
| 10 | 499565.40 | 876255.47 |
| 11 | 499517.30 | 876311.17 |
| 12 | 499517.98 | 876339.03 |
| 91 | 499550.02 | 876264.82 |
| 92 | 499853.39 | 876080.48 |
| 93 | 499887.01 | 876028.39 |
| 95 | 499493.48 | 876324.76 |
| 2412 | 499424.97 | 876259.14 |
| 2413 | 499467.39 | 876258.23 |

NOTE: COORDINATES SHOWN HEREON ARE BASED ON HOWARD COUNTY CONTROL PTS. 2647006 & 2647007 AS SHOWN ON PLAT No. 7150 & 2547001 & 2547002 AS SHOWN ON PLAT No. 9742.



David S. Weber 9/24/91

DAVID S. WEBER
PROFESSIONAL LAND SURVEYOR
MARYLAND REGISTRATION NO. 10852



⊙ - DENOTES IRON PIN TO BE SET

Revenue Book Fee
11/9/98

FILED NOV 13 1992 PREPARED BY:
GLW GUTSCHICK LITTLE & WEBER, P.A.
CIVIL ENGINEERS, SURVEYORS, PLANNERS, LANDSCAPE ARCHITECTS
3909 NATIONAL DRIVE - SUITE 250 - BURTONSVILLE OFFICE PARK
BURTONSVILLE, MARYLAND 20866
TEL: (301) 421-4074 NO. VA.: (301) 989-2574 BALT.: (301) 680-1870 FAX: (301) 421-4186

PLAT NO. _____
SCALE: 1"=50'
DATE: SEPTEMBER 1991
DRAWN BY: GPM/CAD
CHECKED BY: TOC

HOWARD COUNTY DEPARTMENT OF PUBLIC WORKS
PLAT SHOWING
STORM DRAIN & UTILITY EASEMENTS,
AREAS OF FEE SIMPLE ACQUISITION &
AREA OF REVERTIBLE GRADING EASEMENT
PROPERTY OF
ROCKBURN COMMONS COMMUNITY ASSOCIATION, INC.
LIBER 1658 FOLIO 741 - PLAT No. 7150

APPROVED:
LAND ACQUISITION

APPROVED:
BUREAU OF ENGINEERING

1st ELECTION DISTRICT

HOWARD COUNTY, MARYLAND