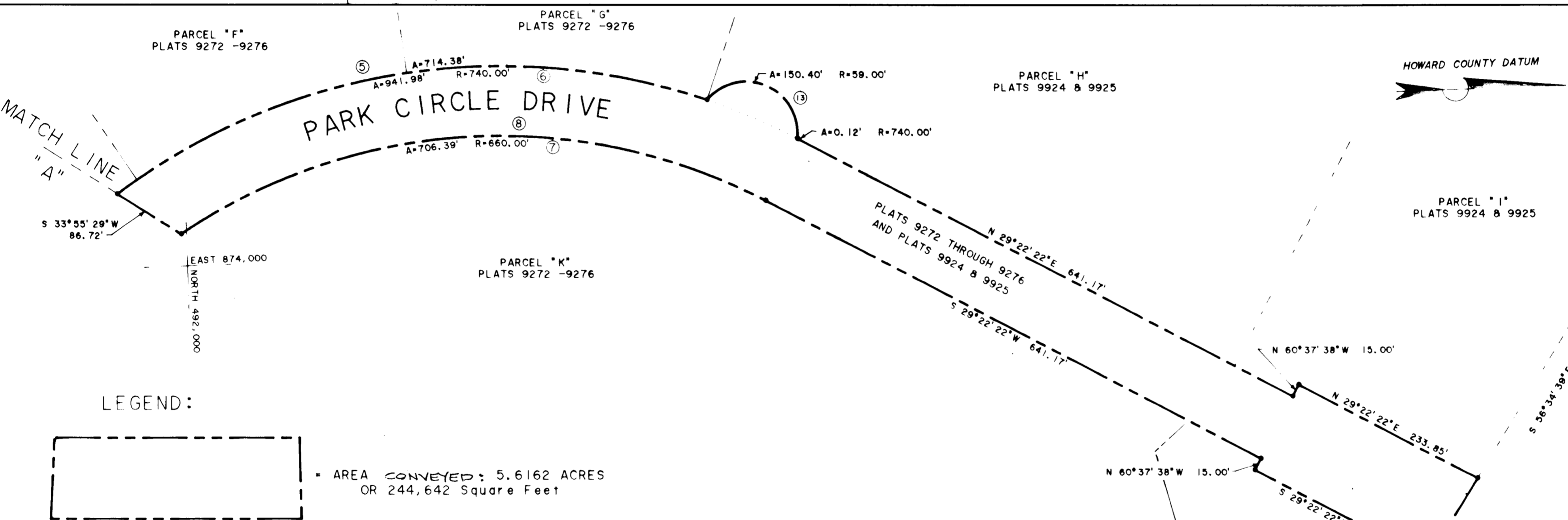
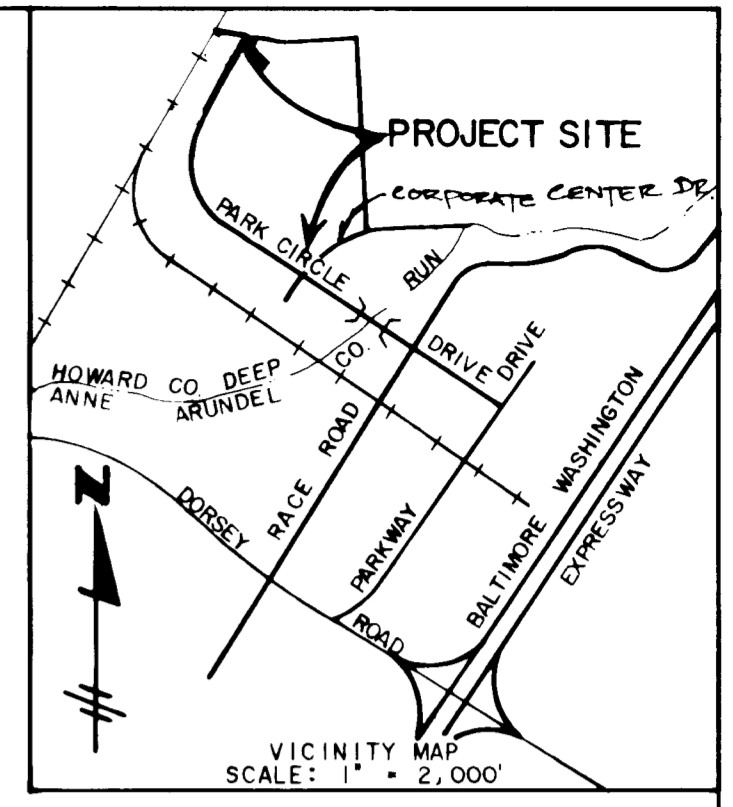
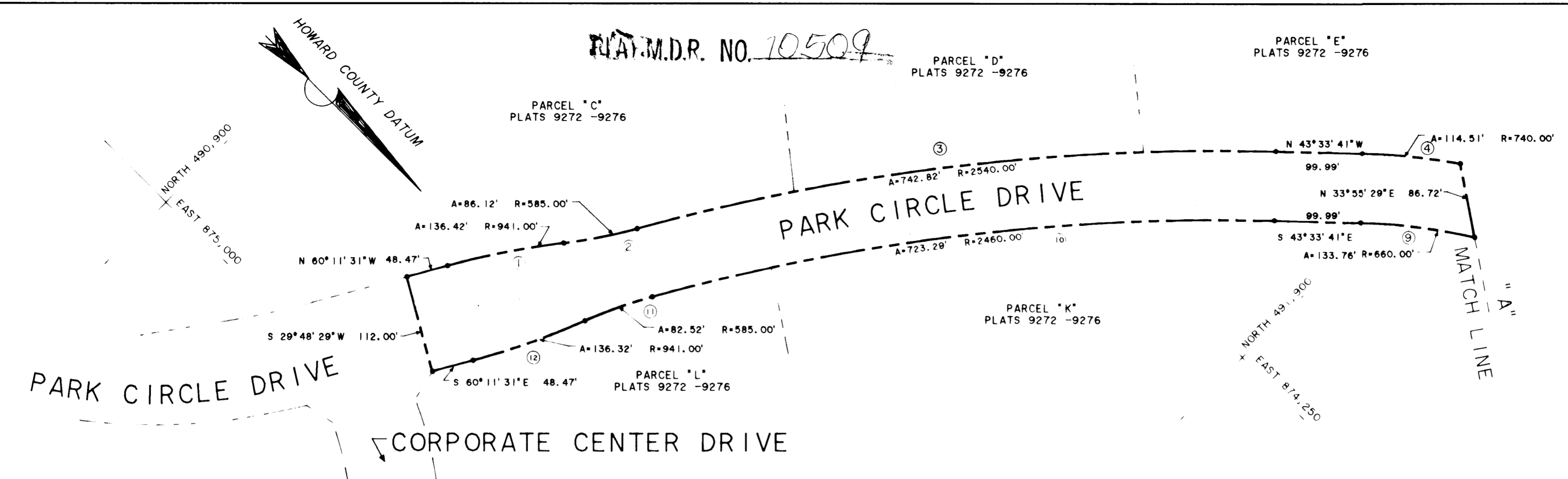


PLAT M.D.R. NO. 10509

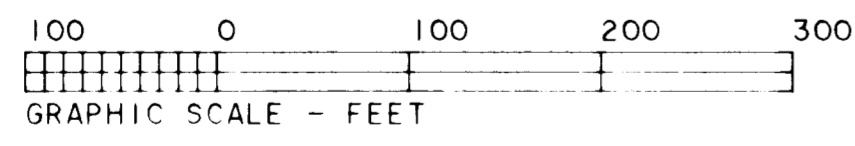


LEGEND:



AREA CONVEYED: 5.6162 ACRES
OR 244,642 Square Feet

CURVE	RADIUS	TANGENT	LENGTH	DELTA	DEGREE	CHORD	CH. BEARING
1	941.00'	68.33'	136.42'	8° 18' 23"	6° 05' 20"	136.30'	N 56° 02' 22" W
2	585.00'	43.14'	86.12'	8° 26' 03"	9° 47' 39"	86.04'	N 56° 05' 51" W
3	2540.00'	374.08'	742.82'	16° 45' 22"	2° 15' 21"	740.18'	N 51° 56' 24" W
4	740.00'	57.37'	114.51'	8° 51' 59"	7° 44' 34"	114.40'	N 39° 07' 43" W
5	740.00'	387.78'	714.38'	55° 18' 42"	7° 44' 33"	686.96'	N 07° 02' 22" W
6	740.00'	546.92'	941.98'	72° 56' 04"	7° 44' 34"	879.66'	N 07° 05' 40" W
7	660.00'	487.79'	840.15'	72° 56' 04"	8° 40' 52"	784.56'	S 07° 05' 40" E
8	660.00'	391.28'	706.39'	61° 19' 20"	8° 40' 52"	673.15'	S 01° 17' 18" E
9	660.00'	67.11'	133.76'	11° 36' 43"	8° 40' 52"	133.53'	S 37° 45' 24" E
10	2460.00'	364.27'	723.29'	16° 50' 46"	2° 19' 45"	720.69'	S 51° 59' 05" E
11	585.00'	41.33'	82.52'	8° 04' 56"	9° 47' 39"	82.45'	S 64° 27' 04" E
12	941.00'	68.28'	136.32'	8° 18' 02"	6° 05' 20"	136.21'	S 64° 20' 31" E
13	59.00'	193.34'	150.40'	146° 03' 37"	97° 06' 41"	112.86'	N 24° 59' 27" E



Rodney H. John
7/13/92

TAX DEPT. OF ASSESSMENTS & TAXATION
9/17/92

FILED SEP 17 1992
NOTES:

1) THIS PLAT IS BASED UPON HOWARD COUNTY GEODETIC CONTROL DATUM PER NAD 27 CONTROL AS PER A SURVEY PERFORMED IN DECEMBER 1990.

ENGINEERING TECHNOLOGIES ASSOCIATES, INC.
ENGINEERS * PLANNERS * SURVEYORS
3458 ELLICOTT CENTER DRIVE, SUITE 101
ELLICOTT CITY, MARYLAND 21043
BALTIMORE (410) 461-9920 WASHINGTON (301) 621-4690

PARK CIRCLE DRIVE
PARKWAY CENTER
1ST ELECTION DISTRICT
HOWARD COUNTY, MARYLAND

APPROVED:
[Signature]
ENGINEERING DATE
[Signature]
LAND ACQUISITION DATE