

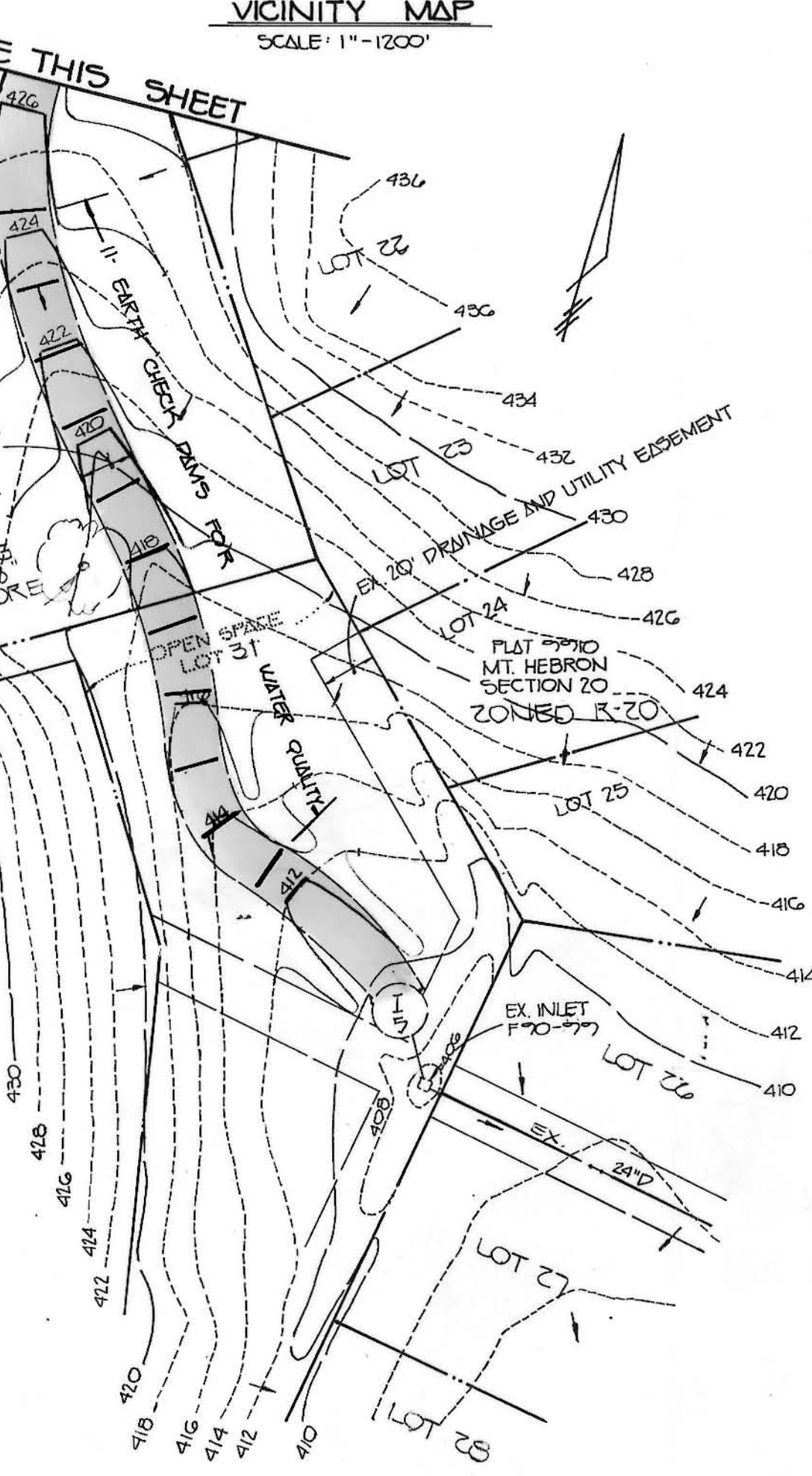
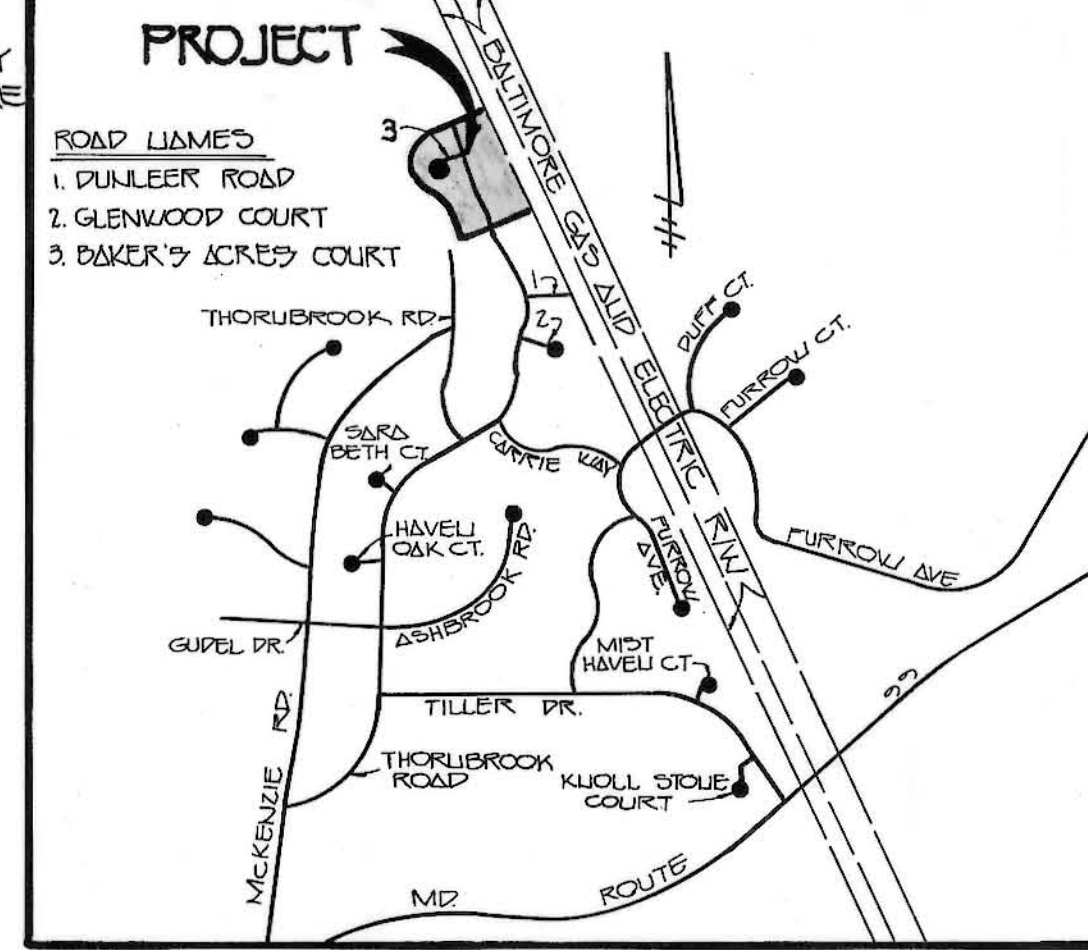
COORDINATE TABLE

Point	North	East
2232	537750.22835	845035.09237
2240	537711.61128	844837.93806
2577	538347.05043	844990.90018
2639	538250.40269	844710.12763
2642	538225.15398	844717.44205
3000	537579.06751	845331.12975
3001	537513.46354	845183.03944
3516	537654.88879	844679.30845
3517	537638.95361	844841.78827
3555	538002.44500	844389.54700
3556	538060.75800	844388.85600
3557	538096.84700	844410.45400
3558	538138.05300	844466.57700
3559	538162.83500	844525.06500
3567	537788.63900	844658.29800
3568	537774.17500	844627.66200
3569	537757.56900	844572.45100
3570	537794.34500	844506.09300
3571	537779.91300	844461.82300

CURVE DATA			
CURVE	RADIUS	LENGTH (ARC)	DELTA
A	550'	77.73'	10°23'20"
B	500'	148.87'	17°03'42"
C	100.02'	60'	36°04'12"

SECTION / AREA	DENSITY TABULATION		NET AREA	No OF DU ALLOWED	No OF D.U. PROPOSED	DENSITY PER ACRE
	OPEN SPACE REQ	OPEN SPACE PROVIDED				
17 THRU 20 PHASE I	14.187 AC±	19.502 AC±	23,864 AC±	5.80 AC±	87,370 AC±	1.86
21	2.87 AC±	* 2.87 AC±	2.2 AC±	-	2.2 AC±	1.85
TOTALS	17.057 AC±	22.372 AC±	103,004 AC±	5.80 AC±	27,170 AC±	1.86

* DRY GROUND USABLE OPEN SPACE = 100%



- GENERAL NOTES**
- PROPERTY IS ZONED R-20
 - GROSS AREA OF TRACT: 172 ACRES
 - NET AREA OF TRACT: 0.2 ACRES
 - NUMBER OF PROPOSED BUILDING LOTS: 113
 - AREA OF PROPOSED BUILDING LOTS: 5.81 AC±
 - NUMBER OF OPEN SPACE LOTS: 2
 - AREA OF OPEN SPACE REQUIRED: 2.8 AC±
 - AREA OF OPEN SPACE PROVIDED: 2.87 AC±
 - PUBLIC WATER AND SEWER TO BE UTILIZED
 - TOPOGRAPHIC SURVEY BY PHOTO SCIENCE INC. DATED JANUARY 27, 1970
 - SOILS MAP NUMBER 3
 - SKETCH PLAN 87-53
 - PUBLIC ROAD RW-11.1 AC±
 - DRILL PENETOR BUILDING RESTRICTION LINE
 - STORMWATER MANAGEMENT AND WATER QUALITY HAVE BEEN PROVIDED SEE FINAL PLAN 72-77 APPROVED IN MARCH 1972
 - EXISTING DIRT ROADS WERE CREATED DURING FARMING ACTIVITY, THEY ARE TO BE ABANDONED WITH THIS SUBMISSION.
 - OPEN SPACE LOTS 16 AND 17 WILL BE DEDICATED TO THE DEPT. OF RECREATION AND PARKS.



FISHER, COLLINS & CARTER, INC.
 CIVIL ENGINEERING CONSULTANTS & LAND SURVEYORS
 9171 BALTIMORE NATIONAL PIKE, SUITE 100
 ELLICOTT CITY, MARYLAND 21042
 TELEPHONE (410) 461-2222
 FAX: (410) 770-3704

TENTATIVELY APPROVED:
 DEPARTMENT OF PLANNING AND ZONING
 HOWARD COUNTY, MARYLAND
Mark V. M'Laughlin 6/6/72
 PLANNING DIRECTOR DATE

MATCH LINE SEE THIS SHEET

MT. HEBRON SECTION 20 ZONED R-20 PLAT 9711
 PLAN SCALE: 1"=50'

OWNER AND DEVELOPER
 MT. HEBRON I.L.C.
 2108 MT. HEBRON DRIVE
 ELLICOTT CITY, MARYLAND 21042

PRELIMINARY PLAN
MT. HEBRON
 LOTS 1-17
 SECTION 20
 2ND ELECTION DISTRICT HOWARD COUNTY, MD
 TAX MAP 17 PARCEL 37
 DATE: DECEMBER 31, 1971
 SHEET 1 OF 1
 387-53