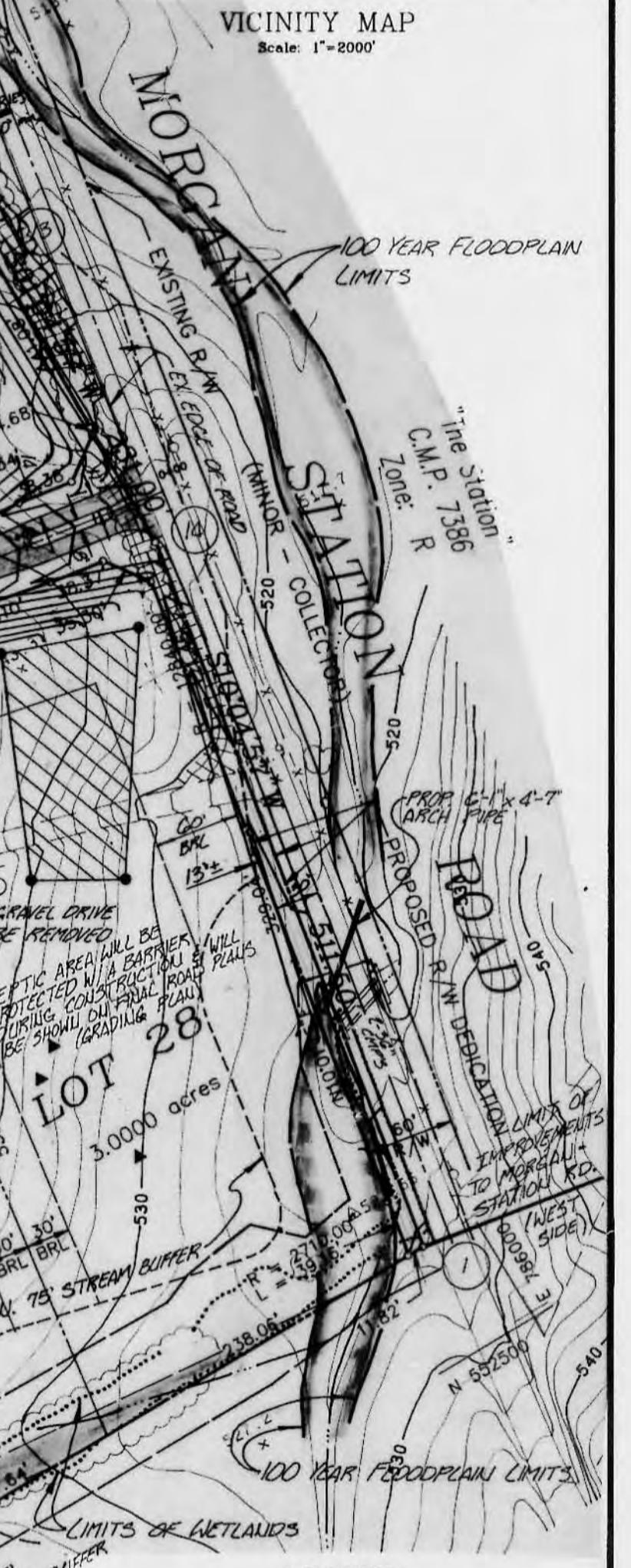
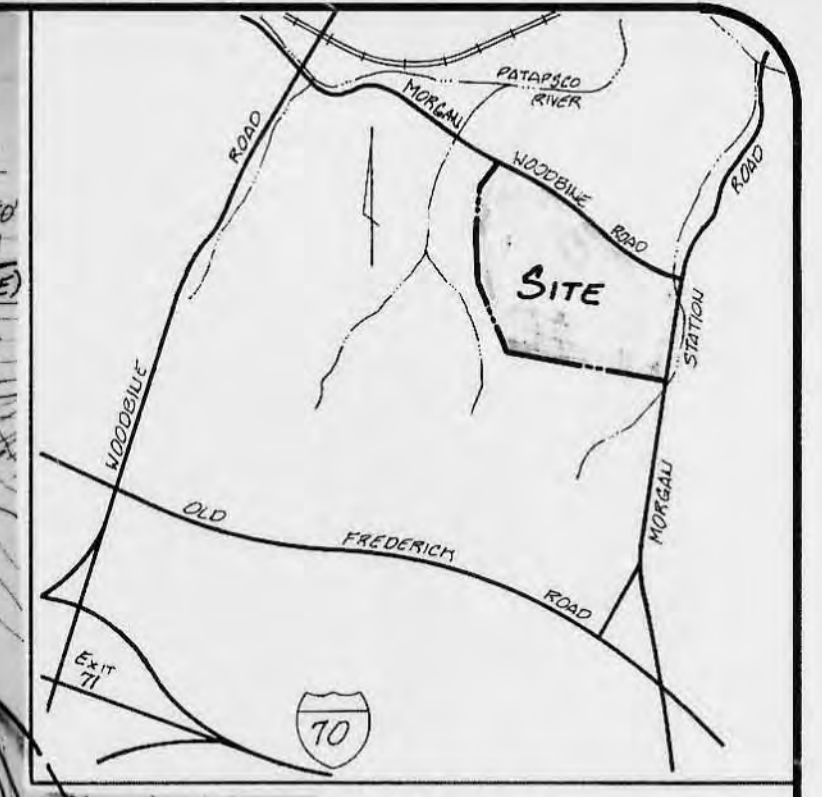
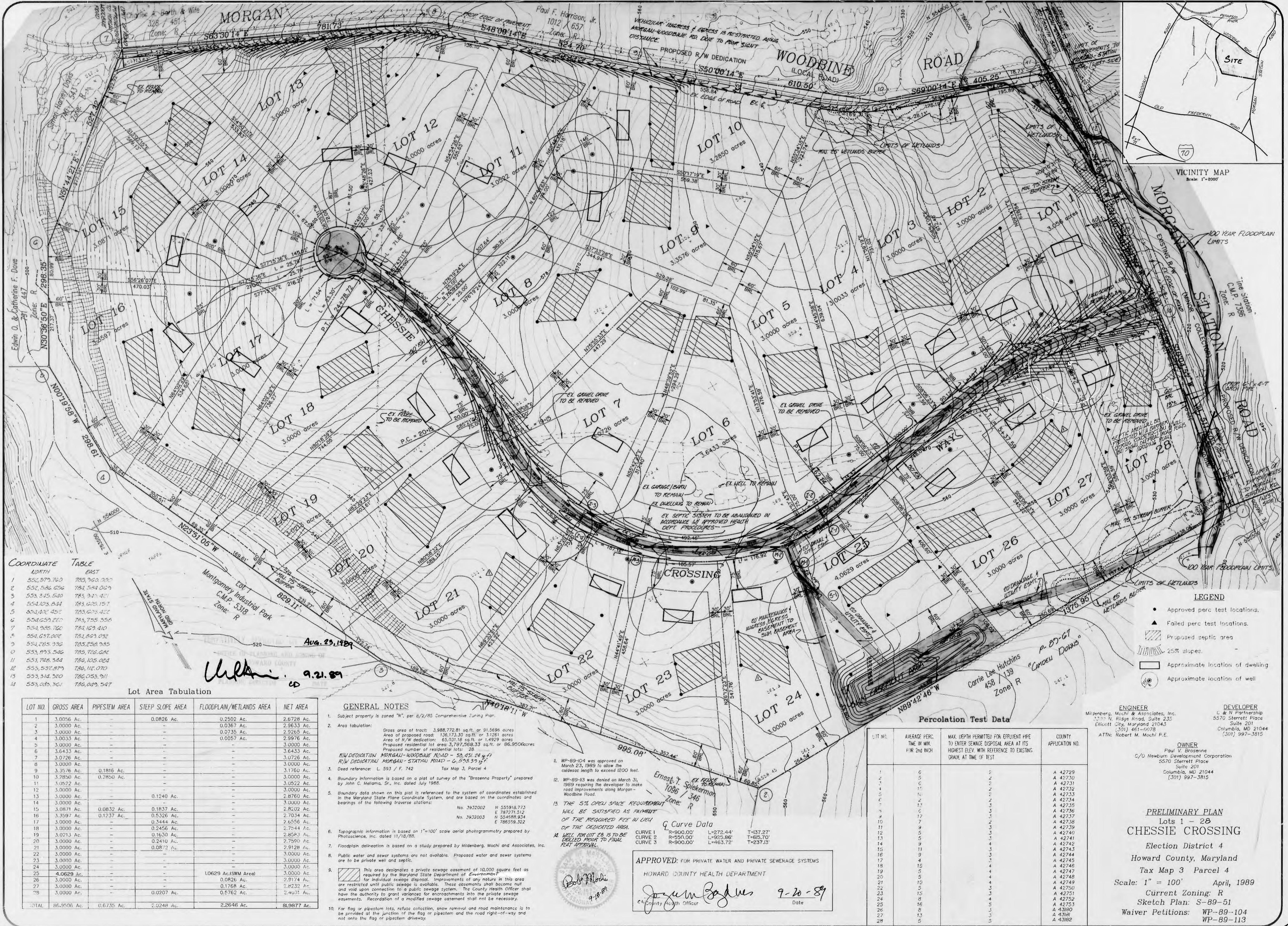


Project	88020-00	Date	APRIL 89
Illustrator	J.M./S.M.	Engineering	J.M.
Scale	1" = 100'	Approval	J.M.

3 SUBMITTED FOR SIGNATURE
 2 REVISED PRELIMINARY PLAN RE SUBMITTED
 1 REVISED FOR HEALTH DEPT. APPROVAL COMMENTS
 1st SUBMISSION TO HOWARD COUNTY DEP.
 DATE: 9/15/89
 TIME: 4:15 PM
 BY: J.M./S.M.

CHESSE CROSSING
 TAX MAP 3 PARCEL 4
 HOWARD COUNTY, MARYLAND
 PRELIMINARY PLAN

MILDBERG, MOCHI & ASSOCIATES, INC.
 ENGINEERS • SURVEYORS • PLANNERS
 3300 North Ridge Road, Suite 235, Ellicott City, Maryland 21043-3350
 (301) 461-0078
 D.C. Metro: (202) 827-5788



COORDINATE TABLE

LINE	NORTH	EAST
1	554,979.740	785,940.000
2	552,966.656	784,584.029
3	553,345.540	783,947.401
4	554,105.844	783,628.157
5	554,407.458	783,628.422
6	554,659.220	783,755.556
7	554,985.722	784,129.410
8	554,637.034	784,867.032
9	554,285.376	785,259.585
10	553,993.546	785,726.546
11	553,748.544	786,105.024
12	553,532.879	786,412.070
13	553,344.520	786,653.511
14	553,285.304	786,829.547

Lot Area Tabulation

LOT NO.	GROSS AREA	PIPESTEM AREA	STEEP SLOPE AREA	FLOODPLAIN/WETLANDS AREA	NET AREA
1	3,0056 Ac.	-	0.0826 Ac.	0.2502 Ac.	2,6728 Ac.
2	3,0000 Ac.	-	-	0.0387 Ac.	2,9613 Ac.
3	3,0000 Ac.	-	-	0.0735 Ac.	2,9265 Ac.
4	3,0033 Ac.	-	-	0.0057 Ac.	2,9976 Ac.
5	3,0000 Ac.	-	-	-	3,0000 Ac.
6	3,6433 Ac.	-	-	-	3,6433 Ac.
7	3,0726 Ac.	-	-	-	3,0726 Ac.
8	3,0000 Ac.	-	-	-	3,0000 Ac.
9	3,3576 Ac.	0.1816 Ac.	-	-	3,1760 Ac.
10	3,2850 Ac.	0.2850 Ac.	-	-	3,0000 Ac.
11	3,0522 Ac.	-	-	-	3,0522 Ac.
12	3,0000 Ac.	-	-	-	3,0000 Ac.
13	3,0000 Ac.	-	0.1240 Ac.	-	2,8760 Ac.
14	3,0000 Ac.	-	-	-	3,0000 Ac.
15	3,0871 Ac.	0.0832 Ac.	0.1837 Ac.	-	2,8202 Ac.
16	3,3597 Ac.	0.1237 Ac.	0.5326 Ac.	-	2,7034 Ac.
17	3,0000 Ac.	-	0.3444 Ac.	-	2,6556 Ac.
18	3,0000 Ac.	-	0.2456 Ac.	-	2,7544 Ac.
19	3,0213 Ac.	-	0.1630 Ac.	-	2,8583 Ac.
20	3,0000 Ac.	-	0.2410 Ac.	-	2,7590 Ac.
21	3,0000 Ac.	-	0.0872 Ac.	-	2,9128 Ac.
22	3,0000 Ac.	-	-	-	3,0000 Ac.
23	3,0000 Ac.	-	-	-	3,0000 Ac.
24	3,0000 Ac.	-	-	-	3,0000 Ac.
25	4,0629 Ac.	-	-	1.0629 Ac. (SWIM Area)	3,0000 Ac.
26	3,0000 Ac.	-	-	0.0826 Ac.	2,9174 Ac.
27	3,0000 Ac.	-	-	0.1768 Ac.	2,8232 Ac.
28	3,0000 Ac.	-	0.0207 Ac.	0.5762 Ac.	2,4021 Ac.
TOTAL	86,9506 Ac.	0.6735 Ac.	2.0248 Ac.	2.2646 Ac.	81,9877 Ac.

GENERAL NOTES

- Subject property is zoned "R", per 4/2/85 Comprehensive Zoning Plan.
- Area tabulation: Gross area of tract: 3,988,772.81 sq.ft. or 91,5696 acres; Area of proposed road: 136,173.30 sq.ft. or 3.1261 acres; Area of R/W dedication: 65,031.18 sq.ft. or 1.4829 acres; Proposed residential lot area: 3,797,568.33 sq.ft. or 86,9506 acres; Proposed number of residential lots: 28.
- Deed reference: L 593 / F 742 Tax Map 3, Parcel 4.
- Boundary information is based on a plat of survey of the "Brossene Property" prepared by John C. Melton, Sr., Inc. dated July 1988.
- Boundary data shown on this plat is referenced to the Maryland State Plane Coordinate System, and are based on the coordinates and bearings of the following traverse stations: No. 3932002 N 555918.733 E 787271.512; No. 3932003 N 554588.934 E 786598.322.
- Topographic information is based on 1"=100' scale aerial photography prepared by Photoscience, Inc. dated 11/18/88.
- Floodplain delineation is based on a study prepared by Mildberg, Mochi and Associates, Inc.
- Public water and sewer systems are not available. Proposed water and sewer systems are to be private well and septic.
- This area designates a private sewage easement of 10,000 square feet as required by the Maryland State Department of Environment for individual sewage disposal. Improvements of any nature in this area are restricted until public sewage is available. These easements shall become null and void upon connection to a public sewage system. The County Health Officer shall have the authority to grant variances for encroachments into the private sewage easements. Recordation of a modified sewage easement shall not be necessary.
- For flag or pipestem lots, refuse collection, snow removal and road maintenance is to be provided at the junction of the flag or pipestem and the road right-of-way and not onto the flag or pipestem driveway.

PERCOLATION TEST DATA

LOT NO.	AVERAGE PERC. TIME IN MIN. PER 2ND INCH	MAX. DEPTH PERMITTED FOR EFFLUENT PIPE TO ENTER SEWAGE DISPOSAL AREA AT ITS HIGHEST ELEV. WITH REFERENCE TO EXISTING GRADE AT TIME OF TEST	COUNTY APPLICATION NO.
1	6	2	A 42729
2	5	2	A 42730
3	6	2	A 42731
4	15	2	A 42732
5	2	2	A 42733
6	13	2	A 42734
7	1	3	A 42735
8	7	3	A 42736
9	17	3	A 42737
10	7	3	A 42738
11	9	3	A 42739
12	5	3	A 42740
13	5	3	A 42741
14	9	4	A 42742
15	11	3	A 42743
16	9	3	A 42744
17	4	3	A 42745
18	15	4	A 42746
19	5	4	A 42747
20	5	4	A 42748
21	10	4	A 42749
22	5	3	A 42750
23	15	3	A 42751
24	8	4	A 42752
25	8	3	A 42890
26	13	3	A 43181
27	13	3	A 43182

Q Curve Data
 CURVE 1 R=900.00' L=272.44' T=137.27'
 CURVE 2 R=500.00' L=925.86' T=65.70'
 CURVE 3 R=900.00' L=463.72' T=237.13'

APPROVED: FOR PRIVATE WATER AND PRIVATE SEWERAGE SYSTEMS
 HOWARD COUNTY HEALTH DEPARTMENT
 Ernest T. Spiekerman
 Health Officer
 9-20-89
 Date

ENGINEER: Mildberg, Mochi & Associates, Inc.
 5570 Stierrett Place
 Ellicott City, Maryland 21043
 (301) 461-0078
 ATTN: Robert M. Mochi P.E.

DEVELOPER: C/O Newburg Development Corporation
 5570 Stierrett Place
 Suite 201
 Columbia, MD 21044
 (301) 997-3815

OWNER: Paul V. Brossene
 5570 Stierrett Place
 Suite 201
 Columbia, MD 21044
 (301) 997-3815

PRELIMINARY PLAN
 Lots 1 - 28
CHESSE CROSSING
 Election District 4
 Howard County, Maryland
 Tax Map 3 Parcel 4
 Scale: 1" = 100' April, 1989
 Current Zoning: R
 Sketch Plan: S-89-51
 Waiver Petitions: WP-89-104
 WP-89-113