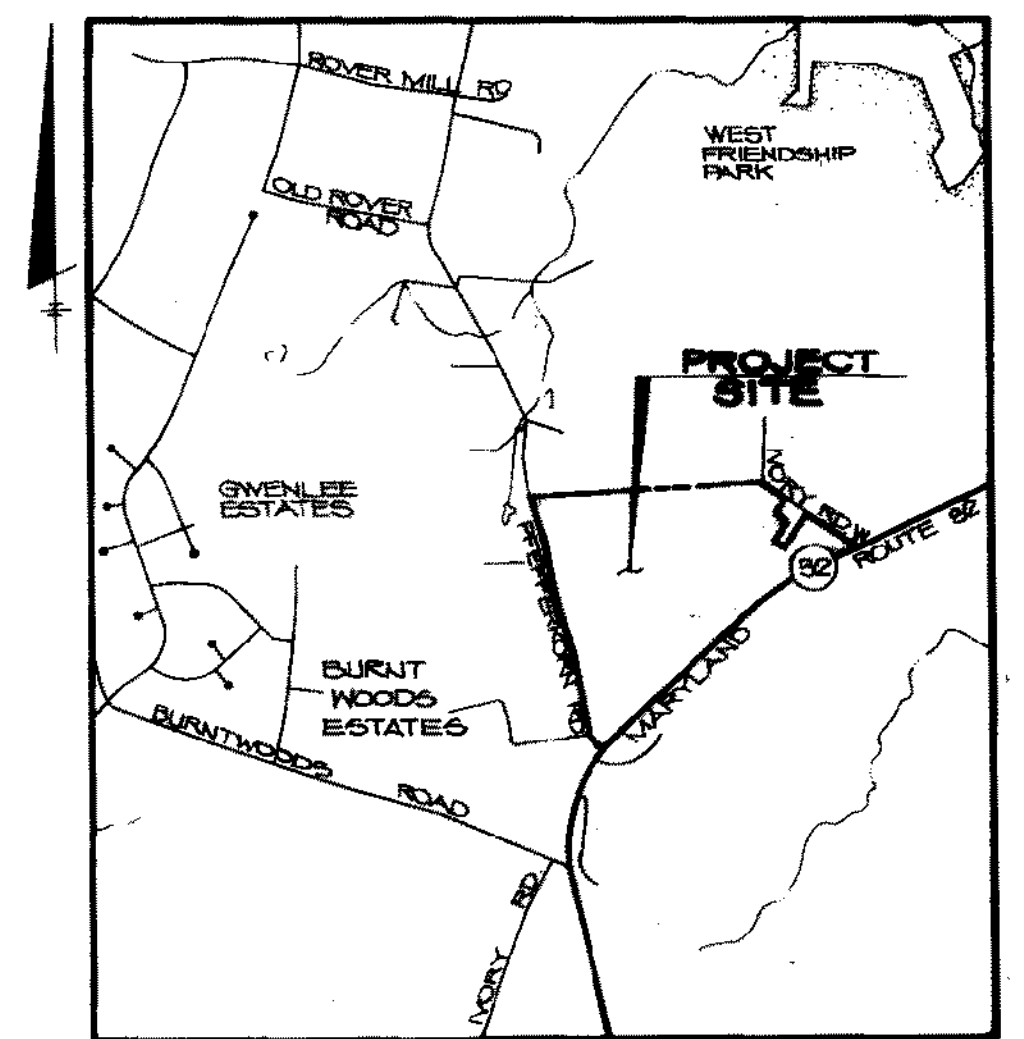


# PRELIMINARY PLAN THE INDIAN'S GUN A SUBDIVISION OF PARCEL 8 AND A RESUBDIVISION OF LOT 1 OF THE SELBY PROPERTY SECTION ONE 3RD ELECTION DISTRICT HOWARD COUNTY, MARYLAND

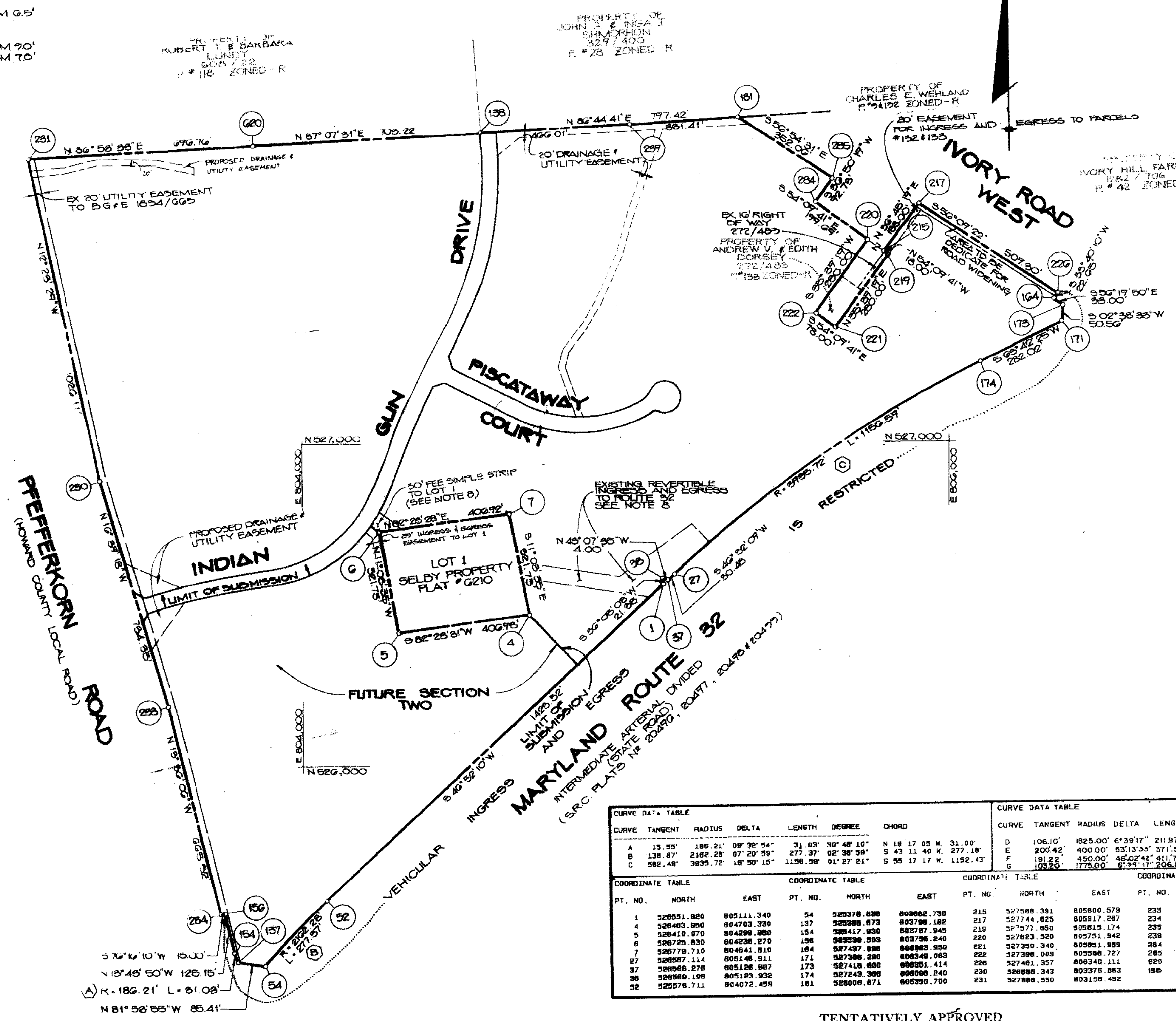


**VICINITY MAP**  
SCALE: 1" = 2000'

**PERC TEST DATA**

A' NUMBER	LOT NO. NEW	LOT NO. OLD	REMARKS	AVERAGE PERC TIME IN MINUTES FOR 2nd INCH	INLET AND BOTTOM MAXIMUM DEPTH PERMITTED IN FEET
41820	1	27		5 MINUTES	
41819	2	26		5 MINUTES	
41818	3	25		10 MINUTES	
41817	4	24		7 MINUTES	
41816	5	23		10 MINUTES	
41815	6	22		9 MINUTES	
41814	7	21		4 MINUTES	
41813	8	20		29 MINUTES	
41812	9	19		9 MINUTES	
41811	10	18		9 MINUTES	
41810	11	17		7 MINUTES	
41809	12	16		4 MINUTES	
41808	13	15		7 MINUTES	
41807 & 41806	14	14&13		14 MINUTES	
41805	14	12		10 MINUTES	
38250	15	29		19 MINUTES	
41821	16	28		12 MINUTES	
41804	17	11		12 MINUTES	
41803	18	10		20 MINUTES	
41802	19	9		10 MINUTES	
41801	20	8		12 MINUTES	

INLET 30' BOTTOM 0.5'  
INLET 60' BOTTOM 20'  
INLET 35' BOTTOM 70'



**LOT TABULATION**

LOT NO.	GROSS LOT AREA	AREA OF STEEP SLOPES	AREA OF PIPESTEM	AREA OF FLOODPLAIN	RESULTING LOT AREA
1	3.11± Ac.	—	—	—	3.11± Ac.
2	3.17± Ac.	—	—	—	3.17± Ac.
3	3.06± Ac.	—	—	—	3.06± Ac.
4	3.00± Ac.	—	—	—	3.00± Ac.
5	3.43± Ac.	—	—	—	3.43± Ac.
6	3.04± Ac.	—	—	—	3.04± Ac.
7	3.44± Ac.	—	—	—	3.44± Ac.
8	3.30± Ac.	—	0.29± Ac.	—	3.01± Ac.
9	3.25± Ac.	—	0.11± Ac.	—	3.14± Ac.
10	4.24± Ac.	—	—	—	4.24± Ac.
11	3.13± Ac.	—	—	—	3.13± Ac.
12	3.01± Ac.	0.03± Ac.	—	—	2.98± Ac.
13	10.95± Ac.	0.25± Ac.	—	—	10.70± Ac.
14	3.56± Ac.	0.08± Ac.	0.17± Ac.	—	3.31± Ac.
15	3.33± Ac.	—	—	—	3.33± Ac.
16	3.39± Ac.	0.07± Ac.	0.24± Ac.	—	3.08± Ac.
17	3.13± Ac.	0.12± Ac.	—	—	3.01± Ac.
18	3.51± Ac.	0.31± Ac.	—	—	3.20± Ac.
19	4.11± Ac.	0.03± Ac.	—	—	4.08± Ac.
20	3.24± Ac.	—	—	—	3.24± Ac.

**SITE TABULATION**

Present Zoning	R
Total Number of Lots	20
Total Area of Lots	74.42± Ac.
Total Area of Road Right of Way	53.02± Ac.
Total Area of Open Space	0 Ac.
Total Area of 100 Year Floodplain	0 Ac.
Total Area of Submission	77.04± Ac.
Water System	Private
Sewer System	Private

**NOTES**

- The area shown with diagonal hatching indicates a private sewage easement of approximately 10,000 square feet as required by the Maryland State Department of Health and Mental Hygiene for individual disposal. Improvements of any kind in this area are restricted until public sewage is available and servicing any residential structures on this site. This easement shall become null and void upon connection to a public sewage. The County Health Officer shall have the authority to grant variances for encroachments into the private sewage easement. Recordation of a modified sewage easement shall not be necessary.
- Percolation test holes shown hereon have been field located as shown:
  - DARK DOT APPROVED and
  - DISAPPROVED.
- The lots shown hereon comply with the minimum ownership width and lot areas as required by the Maryland State Department of Health and Mental Hygiene.
- Percolation areas and water wells for adjoining lots are shown where pertinent.
- See Office of Planning and Zoning file.
- For flag or pipestem lots, refuse collection, snow removal and maintenance to be provided at the junction of pipestem and the road right of way and not onto the flag or pipestem driveway.
- ▭ denotes 2% steep slopes.
- The existing revertible ingress and egress easement provided for existing Lot 1, Selby Property, Plat #6210 to become null and void at recordation of the record PLATS FOR THE INDIAN'S GUN. Access to Lot 1 will be provided by a 50' fee simple strip from Lot 1 to Indian Gun Drive.

CURVE DATA TABLE						CURVE DATA TABLE						
CURVE	TANGENT	RADIUS	DELTA	LENGTH	DEGREE	CURVE	TANGENT	RADIUS	DELTA	LENGTH	DEGREE	CHORD
A	15.95'	186.21'	08°32'54"	31.03'	30°48'10"	D	106.10'	825.00'	6°39'17"	211.97'	3°08'22"	N77°52'31"E, 211.85'
B	138.87'	2182.28'	07°20'59"	277.37'	02°30'59"	E	200.42'	400.00'	63°13'55"	371.59'	40°19'26"	S54°35'25"E, 350.57'
C	582.48'	3835.72'	18°50'15"	1196.58'	01°27'21"	F	181.25'	450.00'	45°02'42"	411.74'	12°43'37"	S89°10'48"E, 351.95'
						G	103.50'	175.00'	6°34'17"	206.16'	3°13'41"	N77°52'31"E, 206.04'

COORDINATE TABLE			COORDINATE TABLE			COORDINATE TABLE			COORDINATE TABLE		
PT. NO.	NORTH	EAST	PT. NO.	NORTH	EAST	PT. NO.	NORTH	EAST	PT. NO.	NORTH	EAST
1	528951.820	805111.340	34	528378.630	803882.730	210	527588.391	805800.578	233	528182.801	803987.158
4	528483.890	804703.730	137	528388.873	803798.182	217	527744.825	805917.287	234	528539.843	803743.888
5	528410.070	804298.980	154	528417.800	803787.945	218	527877.850	805815.174	235	528518.117	803488.842
6	528729.830	804238.270	158	528339.505	803796.240	220	527823.320	805751.842	238	527988.052	805618.823
7	528778.710	804841.810	164	527437.886	803883.950	221	527350.340	805891.959	284	527740.438	805950.980
27	528987.114	805148.911	171	527388.280	803748.063	232	527388.098	805988.727	285	527814.823	805645.637
37	528988.278	805188.987	173	527418.800	803851.414	236	527481.357	808340.111	820	527828.322	803852.238
38	528958.188	805123.932	174	527243.308	803898.240	230	528888.342	803378.883	180	527761.871	804584.508
52	528578.711	804072.458	181	528006.871	803950.700	231	527888.598	803198.482			

**PLAN**  
SCALE: 1" = 200'

TENTATIVELY APPROVED  
ON 10/17/88  
OFFICE OF PLANNING AND ZONING  
HOWARD COUNTY

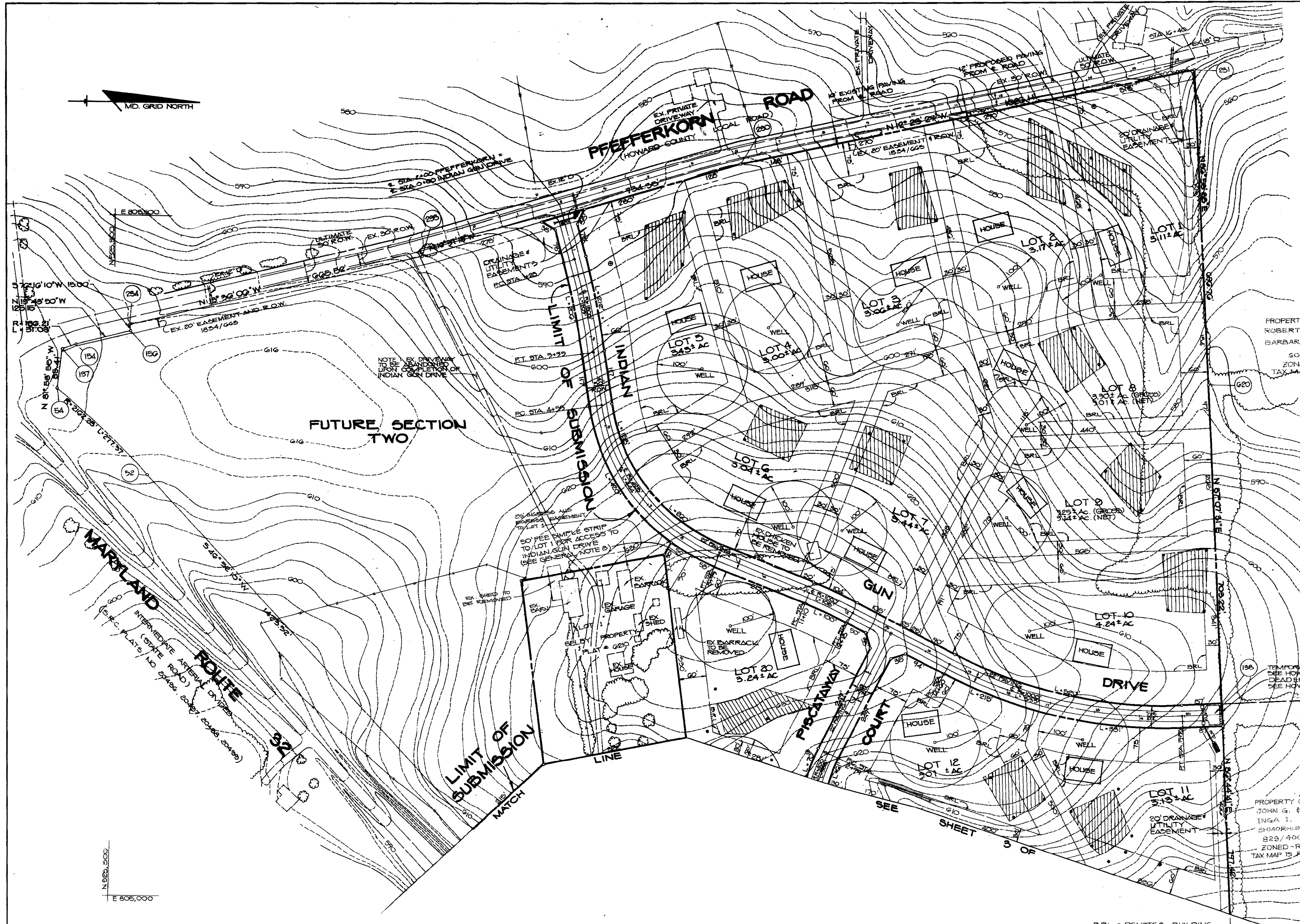
*[Signature]*  
PLANNING DIRECTOR

APPROVED: FOR PRIVATE WATER AND PRIVATE SEWERAGE SYSTEMS FOR HOWARD COUNTY HEALTH DEPARTMENT.

*[Signature]*  
DATE 3/9/89  
COUNTY HEALTH OFFICER

DATE NO. REVISION	
OWNER/DEVELOPER FRISCILLA S. CLAGETT 14000 CASTLE BOULEVARD SILVER SPRING, MARYLAND 20904 AND PFEFFERKORN 2797 PFEFFERKORN ROAD WEST FRIENDSHIP, MARYLAND 21794	
PROJECT: A SUBDIVISION OF PARCEL 8 AND A RESUBDIVISION OF LOT 1 OF THE SELBY PROPERTY <b>THE INDIAN'S GUN (SECTION ONE)</b> REF: F-88-27, Y.P. 88-19, Y.P. 87-11	
AREA	TAX MAP 22: PARCEL 8 ZONED R 3RD ELECTION DISTRICT HOWARD COUNTY, MARYLAND
<b>TITLE SHEET</b>	
<b>THE RIEMER GROUP, INC.</b> The Riemer Group, Inc. A Land Planning, Design & Civil Engineering Firm 3105 North Ridge Road, Ellicott City, Maryland 21043 (301) 461-2888	
DATE <u>1-6-89</u>	DESIGNED BY: D.B.S.
	DRAWN BY: R.A.W.
	PROJECT NO: 12404
	DATE: OCTOBER 20, 1988
	SCALE: AS SHOWN
	DRAWING NO. 1 OF 5





ST. 216' 10" W 1500'  
 N 15° 48' 00" W 12516'  
 R 182.21' L 317.08'  
 N 81° 55' 00" W 3541.1'  
 E 800.500'

ST. 216' 10" W 1500'  
 N 15° 48' 00" W 12516'  
 R 182.21' L 317.08'  
 N 81° 55' 00" W 3541.1'  
 E 800.500'

ST. 216' 10" W 1500'  
 N 15° 48' 00" W 12516'  
 R 182.21' L 317.08'  
 N 81° 55' 00" W 3541.1'  
 E 800.500'

ST. 216' 10" W 1500'  
 N 15° 48' 00" W 12516'  
 R 182.21' L 317.08'  
 N 81° 55' 00" W 3541.1'  
 E 800.500'

E 800.500'  
 N 528.250'

TEMPORARY TREE TURNAROUND  
 SEE HOWARD CO STD DETAIL R 909  
 DEAD END BARRICADE TYPE 'B'  
 SEE HOWARD CO STD DETAIL R 711

PROPERTY OF  
 JOHN G. &  
 INGA I.  
 SHMOEHLIN  
 828/400  
 ZONED - R  
 TAX MAP 15 P 23

DATE	NO.	REVISION
OWNER/DEVELOPER		
PRISCILLA S. CLAGETT 14000 CASTLE BOULEVARD SILVER SPRING, MARYLAND 20904		
AVIS PFEFFERKORN 2777 PFEFFERKORN ROAD WEST FRIENDSHIP, MARYLAND 21794		
PROJECT: A SUBDIVISION OF PARCEL B AND A RESUBDIVISION OF LOT 1 OF THE SELBY PROPERTY		
<b>THE INDIAN'S GUN (SECTION ONE)</b>		
REF: F-88-49; V.P. 85-73; V.P. 87-79; S-88-84		
AREA: TAX MAP 22 PARCEL B ZONED R 3RD ELECTION DISTRICT HOWARD COUNTY, MARYLAND		
TITLE:		
<b>PRELIMINARY PLAN</b>		
<b>THE RIEMER GROUP, INC.</b>		
The Riemer Group, Inc. A Land Planning, Design & Civil Engineering Firm 3105 North Ridge Road, Ellicott City, Maryland 21043 (301) 461-2690		

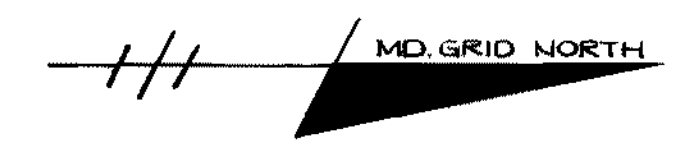
**PLAN**  
 SCALE: 1" = 100'

REVISIONS  
 1. 10/20/88  
 2. 11/10/88  
 3. 12/15/88  
 4. 1/15/89  
 5. 2/15/89  
 6. 3/15/89  
 7. 4/15/89  
 8. 5/15/89  
 9. 6/15/89  
 10. 7/15/89  
 11. 8/15/89  
 12. 9/15/89  
 13. 10/15/89  
 14. 11/15/89  
 15. 12/15/89  
 16. 1/15/90  
 17. 2/15/90  
 18. 3/15/90  
 19. 4/15/90  
 20. 5/15/90  
 21. 6/15/90  
 22. 7/15/90  
 23. 8/15/90  
 24. 9/15/90  
 25. 10/15/90  
 26. 11/15/90  
 27. 12/15/90  
 28. 1/15/91  
 29. 2/15/91  
 30. 3/15/91  
 31. 4/15/91  
 32. 5/15/91  
 33. 6/15/91  
 34. 7/15/91  
 35. 8/15/91  
 36. 9/15/91  
 37. 10/15/91  
 38. 11/15/91  
 39. 12/15/91  
 40. 1/15/92  
 41. 2/15/92  
 42. 3/15/92  
 43. 4/15/92  
 44. 5/15/92  
 45. 6/15/92  
 46. 7/15/92  
 47. 8/15/92  
 48. 9/15/92  
 49. 10/15/92  
 50. 11/15/92  
 51. 12/15/92  
 52. 1/15/93  
 53. 2/15/93  
 54. 3/15/93  
 55. 4/15/93  
 56. 5/15/93  
 57. 6/15/93  
 58. 7/15/93  
 59. 8/15/93  
 60. 9/15/93  
 61. 10/15/93  
 62. 11/15/93  
 63. 12/15/93  
 64. 1/15/94  
 65. 2/15/94  
 66. 3/15/94  
 67. 4/15/94  
 68. 5/15/94  
 69. 6/15/94  
 70. 7/15/94  
 71. 8/15/94  
 72. 9/15/94  
 73. 10/15/94  
 74. 11/15/94  
 75. 12/15/94  
 76. 1/15/95  
 77. 2/15/95  
 78. 3/15/95  
 79. 4/15/95  
 80. 5/15/95  
 81. 6/15/95  
 82. 7/15/95  
 83. 8/15/95  
 84. 9/15/95  
 85. 10/15/95  
 86. 11/15/95  
 87. 12/15/95  
 88. 1/15/96  
 89. 2/15/96  
 90. 3/15/96  
 91. 4/15/96  
 92. 5/15/96  
 93. 6/15/96  
 94. 7/15/96  
 95. 8/15/96  
 96. 9/15/96  
 97. 10/15/96  
 98. 11/15/96  
 99. 12/15/96  
 100. 1/15/97  
 101. 2/15/97  
 102. 3/15/97  
 103. 4/15/97  
 104. 5/15/97  
 105. 6/15/97  
 106. 7/15/97  
 107. 8/15/97  
 108. 9/15/97  
 109. 10/15/97  
 110. 11/15/97  
 111. 12/15/97  
 112. 1/15/98  
 113. 2/15/98  
 114. 3/15/98  
 115. 4/15/98  
 116. 5/15/98  
 117. 6/15/98  
 118. 7/15/98  
 119. 8/15/98  
 120. 9/15/98  
 121. 10/15/98  
 122. 11/15/98  
 123. 12/15/98  
 124. 1/15/99  
 125. 2/15/99  
 126. 3/15/99  
 127. 4/15/99  
 128. 5/15/99  
 129. 6/15/99  
 130. 7/15/99  
 131. 8/15/99  
 132. 9/15/99  
 133. 10/15/99  
 134. 11/15/99  
 135. 12/15/99  
 136. 1/15/00  
 137. 2/15/00  
 138. 3/15/00  
 139. 4/15/00  
 140. 5/15/00  
 141. 6/15/00  
 142. 7/15/00  
 143. 8/15/00  
 144. 9/15/00  
 145. 10/15/00  
 146. 11/15/00  
 147. 12/15/00  
 148. 1/15/01  
 149. 2/15/01  
 150. 3/15/01  
 151. 4/15/01  
 152. 5/15/01  
 153. 6/15/01  
 154. 7/15/01  
 155. 8/15/01  
 156. 9/15/01  
 157. 10/15/01  
 158. 11/15/01  
 159. 12/15/01  
 160. 1/15/02  
 161. 2/15/02  
 162. 3/15/02  
 163. 4/15/02  
 164. 5/15/02  
 165. 6/15/02  
 166. 7/15/02  
 167. 8/15/02  
 168. 9/15/02  
 169. 10/15/02  
 170. 11/15/02  
 171. 12/15/02  
 172. 1/15/03  
 173. 2/15/03  
 174. 3/15/03  
 175. 4/15/03  
 176. 5/15/03  
 177. 6/15/03  
 178. 7/15/03  
 179. 8/15/03  
 180. 9/15/03  
 181. 10/15/03  
 182. 11/15/03  
 183. 12/15/03  
 184. 1/15/04  
 185. 2/15/04  
 186. 3/15/04  
 187. 4/15/04  
 188. 5/15/04  
 189. 6/15/04  
 190. 7/15/04  
 191. 8/15/04  
 192. 9/15/04  
 193. 10/15/04  
 194. 11/15/04  
 195. 12/15/04  
 196. 1/15/05  
 197. 2/15/05  
 198. 3/15/05  
 199. 4/15/05  
 200. 5/15/05  
 201. 6/15/05  
 202. 7/15/05  
 203. 8/15/05  
 204. 9/15/05  
 205. 10/15/05  
 206. 11/15/05  
 207. 12/15/05  
 208. 1/15/06  
 209. 2/15/06  
 210. 3/15/06  
 211. 4/15/06  
 212. 5/15/06  
 213. 6/15/06  
 214. 7/15/06  
 215. 8/15/06  
 216. 9/15/06  
 217. 10/15/06  
 218. 11/15/06  
 219. 12/15/06  
 220. 1/15/07  
 221. 2/15/07  
 222. 3/15/07  
 223. 4/15/07  
 224. 5/15/07  
 225. 6/15/07  
 226. 7/15/07  
 227. 8/15/07  
 228. 9/15/07  
 229. 10/15/07  
 230. 11/15/07  
 231. 12/15/07  
 232. 1/15/08  
 233. 2/15/08  
 234. 3/15/08  
 235. 4/15/08  
 236. 5/15/08  
 237. 6/15/08  
 238. 7/15/08  
 239. 8/15/08  
 240. 9/15/08  
 241. 10/15/08  
 242. 11/15/08  
 243. 12/15/08  
 244. 1/15/09  
 245. 2/15/09  
 246. 3/15/09  
 247. 4/15/09  
 248. 5/15/09  
 249. 6/15/09  
 250. 7/15/09  
 251. 8/15/09  
 252. 9/15/09  
 253. 10/15/09  
 254. 11/15/09  
 255. 12/15/09  
 256. 1/15/10  
 257. 2/15/10  
 258. 3/15/10  
 259. 4/15/10  
 260. 5/15/10  
 261. 6/15/10  
 262. 7/15/10  
 263. 8/15/10  
 264. 9/15/10  
 265. 10/15/10  
 266. 11/15/10  
 267. 12/15/10  
 268. 1/15/11  
 269. 2/15/11  
 270. 3/15/11  
 271. 4/15/11  
 272. 5/15/11  
 273. 6/15/11  
 274. 7/15/11  
 275. 8/15/11  
 276. 9/15/11  
 277. 10/15/11  
 278. 11/15/11  
 279. 12/15/11  
 280. 1/15/12  
 281. 2/15/12  
 282. 3/15/12  
 283. 4/15/12  
 284. 5/15/12  
 285. 6/15/12  
 286. 7/15/12  
 287. 8/15/12  
 288. 9/15/12  
 289. 10/15/12  
 290. 11/15/12  
 291. 12/15/12  
 292. 1/15/13  
 293. 2/15/13  
 294. 3/15/13  
 295. 4/15/13  
 296. 5/15/13  
 297. 6/15/13  
 298. 7/15/13  
 299. 8/15/13  
 300. 9/15/13  
 301. 10/15/13  
 302. 11/15/13  
 303. 12/15/13  
 304. 1/15/14  
 305. 2/15/14  
 306. 3/15/14  
 307. 4/15/14  
 308. 5/15/14  
 309. 6/15/14  
 310. 7/15/14  
 311. 8/15/14  
 312. 9/15/14  
 313. 10/15/14  
 314. 11/15/14  
 315. 12/15/14  
 316. 1/15/15  
 317. 2/15/15  
 318. 3/15/15  
 319. 4/15/15  
 320. 5/15/15  
 321. 6/15/15  
 322. 7/15/15  
 323. 8/15/15  
 324. 9/15/15  
 325. 10/15/15  
 326. 11/15/15  
 327. 12/15/15  
 328. 1/15/16  
 329. 2/15/16  
 330. 3/15/16  
 331. 4/15/16  
 332. 5/15/16  
 333. 6/15/16  
 334. 7/15/16  
 335. 8/15/16  
 336. 9/15/16  
 337. 10/15/16  
 338. 11/15/16  
 339. 12/15/16  
 340. 1/15/17  
 341. 2/15/17  
 342. 3/15/17  
 343. 4/15/17  
 344. 5/15/17  
 345. 6/15/17  
 346. 7/15/17  
 347. 8/15/17  
 348. 9/15/17  
 349. 10/15/17  
 350. 11/15/17  
 351. 12/15/17  
 352. 1/15/18  
 353. 2/15/18  
 354. 3/15/18  
 355. 4/15/18  
 356. 5/15/18  
 357. 6/15/18  
 358. 7/15/18  
 359. 8/15/18  
 360. 9/15/18  
 361. 10/15/18  
 362. 11/15/18  
 363. 12/15/18  
 364. 1/15/19  
 365. 2/15/19  
 366. 3/15/19  
 367. 4/15/19  
 368. 5/15/19  
 369. 6/15/19  
 370. 7/15/19  
 371. 8/15/19  
 372. 9/15/19  
 373. 10/15/19  
 374. 11/15/19  
 375. 12/15/19  
 376. 1/15/20  
 377. 2/15/20  
 378. 3/15/20  
 379. 4/15/20  
 380. 5/15/20  
 381. 6/15/20  
 382. 7/15/20  
 383. 8/15/20  
 384. 9/15/20  
 385. 10/15/20  
 386. 11/15/20  
 387. 12/15/20  
 388. 1/15/21  
 389. 2/15/21  
 390. 3/15/21  
 391. 4/15/21  
 392. 5/15/21  
 393. 6/15/21  
 394. 7/15/21  
 395. 8/15/21  
 396. 9/15/21  
 397. 10/15/21  
 398. 11/15/21  
 399. 12/15/21  
 400. 1/15/22  
 401. 2/15/22  
 402. 3/15/22  
 403. 4/15/22  
 404. 5/15/22  
 405. 6/15/22  
 406. 7/15/22  
 407. 8/15/22  
 408. 9/15/22  
 409. 10/15/22  
 410. 11/15/22  
 411. 12/15/22  
 412. 1/15/23  
 413. 2/15/23  
 414. 3/15/23  
 415. 4/15/23  
 416. 5/15/23  
 417. 6/15/23  
 418. 7/15/23  
 419. 8/15/23  
 420. 9/15/23  
 421. 10/15/23  
 422. 11/15/23  
 423. 12/15/23  
 424. 1/15/24  
 425. 2/15/24  
 426. 3/15/24  
 427. 4/15/24  
 428. 5/15/24  
 429. 6/15/24  
 430. 7/15/24  
 431. 8/15/24  
 432. 9/15/24  
 433. 10/15/24  
 434. 11/15/24  
 435. 12/15/24  
 436. 1/15/25  
 437. 2/15/25  
 438. 3/15/25  
 439. 4/15/25  
 440. 5/15/25  
 441. 6/15/25  
 442. 7/15/25  
 443. 8/15/25  
 444. 9/15/25  
 445. 10/15/25  
 446. 11/15/25  
 447. 12/15/25  
 448. 1/15/26  
 449. 2/15/26  
 450. 3/15/26  
 451. 4/15/26  
 452. 5/15/26  
 453. 6/15/26  
 454. 7/15/26  
 455. 8/15/26  
 456. 9/15/26  
 457. 10/15/26  
 458. 11/15/26  
 459. 12/15/26  
 460. 1/15/27  
 461. 2/15/27  
 462. 3/15/27  
 463. 4/15/27  
 464. 5/15/27  
 465. 6/15/27  
 466. 7/15/27  
 467. 8/15/27  
 468. 9/15/27  
 469. 10/15/27  
 470. 11/15/27  
 471. 12/15/27  
 472. 1/15/28  
 473. 2/15/28  
 474. 3/15/28  
 475. 4/15/28  
 476. 5/15/28  
 477. 6/15/28  
 478. 7/15/28  
 479. 8/15/28  
 480. 9/15/28  
 481. 10/15/28  
 482. 11/15/28  
 483. 12/15/28  
 484. 1/15/29  
 485. 2/15/29  
 486. 3/15/29  
 487. 4/15/29  
 488. 5/15/29  
 489. 6/15/29  
 490. 7/15/29  
 491. 8/15/29  
 492. 9/15/29  
 493. 10/15/29  
 494. 11/15/29  
 495. 12/15/29  
 496. 1/15/30  
 497. 2/15/30  
 498. 3/15/30  
 499. 4/15/30  
 500. 5/15/30  
 501. 6/15/30  
 502. 7/15/30  
 503. 8/15/30  
 504. 9/15/30  
 505. 10/15/30  
 506. 11/15/30  
 507. 12/15/30  
 508. 1/15/31  
 509. 2/15/31  
 510. 3/15/31  
 511. 4/15/31  
 512. 5/15/31  
 513. 6/15/31  
 514. 7/15/31  
 515. 8/15/31  
 516. 9/15/31  
 517. 10/15/31  
 518. 11/15/31  
 519. 12/15/31  
 520. 1/15/32  
 521. 2/15/32  
 522. 3/15/32  
 523. 4/15/32  
 524. 5/15/32  
 525. 6/15/32  
 526. 7/15/32  
 527. 8/15/32  
 528. 9/15/32  
 529. 10/15/32  
 530. 11/15/32  
 531. 12/15/32  
 532. 1/15/33  
 533. 2/15/33  
 534. 3/15/33  
 535. 4/15/33  
 536. 5/15/33  
 537. 6/15/33  
 538. 7/15/33  
 539. 8/15/33  
 540. 9/15/33  
 541. 10/15/33  
 542. 11/15/33  
 543. 12/15/33  
 544. 1/15/34  
 545. 2/15/34  
 546. 3/15/34  
 547. 4/15/34  
 548. 5/15/34  
 549. 6/15/34  
 550. 7/15/34  
 551. 8/15/34  
 552. 9/15/34  
 553. 10/15/34  
 554. 11/15/34  
 555. 12/15/34  
 556. 1/15/35  
 557. 2/15/35  
 558. 3/15/35  
 559. 4/15/35  
 560. 5/15/35  
 561. 6/15/35  
 562. 7/15/35  
 563. 8/15/35  
 564. 9/15/35  
 565. 10/15/35  
 566. 11/15/35  
 567. 12/15/35  
 568. 1/15/36  
 569. 2/15/36  
 570. 3/15/36  
 571. 4/15/36  
 572. 5/15/36  
 573. 6/15/36  
 574. 7/15/36  
 575. 8/15/36  
 576. 9/15/36  
 577. 10/15/36  
 578. 11/15/36  
 579. 12/15/36  
 580. 1/15/37  
 581. 2/15/37  
 582. 3/15/37  
 583. 4/15/37  
 584. 5/15/37  
 585. 6/15/37  
 586. 7/15/37  
 587. 8/15/37  
 588. 9/15/37  
 589. 10/15/37  
 590. 11/15/37  
 591. 12/15/37  
 592. 1/15/38  
 593. 2/15/38  
 594. 3/15/38  
 595. 4/15/38  
 596. 5/15/38  
 597. 6/15/38  
 598. 7/15/38  
 599. 8/15/38  
 600. 9/15/38  
 601. 10/15/38  
 602. 11/15/38  
 603. 12/15/38  
 604. 1/15/39  
 605. 2/15/39  
 606. 3/15/39  
 607. 4/15/39  
 608. 5/15/39  
 609. 6/15/39  
 610. 7/15/39  
 611. 8/15/39  
 612. 9/15/39  
 613. 10/15/39  
 614. 11/15/39  
 615. 12/15/39  
 616. 1/15/40  
 617. 2/15/40  
 618. 3/15/40  
 619. 4/15/40  
 620. 5/15/40  
 621. 6/15/40  
 622. 7/15/40  
 623. 8/15/40  
 624. 9/15/40  
 625. 10/15/40  
 626. 11/15/40  
 627. 12/15/40  
 628. 1/15/41  
 629. 2/15/41  
 630. 3/15/41  
 631. 4/15/41  
 632. 5/15/41  
 633. 6/15/41  
 634. 7/15



E 804,500  
N 528,000

E 804,500  
N 528,000



N 528,000  
E 806,500

DATE	NO	REVISION
OWNER/DEVELOPER		
PRISCILLA S. CLAGETT 14000 CASTLE BOULEVARD SILVER SPRING, MARYLAND 20904 AVIS PFEFFERKORN 2797 PFEFFERKORN ROAD WEST FRIENDSHIP, MARYLAND 21794		
PROJECT: A SUBDIVISION OF PARCELS 8 AND 9 AND A RESUBDIVISION OF LOT 1 OF THE BELDY PROPERTY <b>THE INDIAN'S GUN (SECTION ONE)</b> REF: F-88-47 VP 89-79 VP 87-77 506-84		
AREA TAX MAP 22 PARCEL 8 ZONED-R 8RD ELECTION DISTRICT HOWARD COUNTY, MARYLAND		
TITLE <b>PRELIMINARY PLAN</b>		
<b>THE RIEMER GROUP, INC.</b> The Riemer Group, Inc. A Land Planning, Design & Civil Engineering Firm 3105 North Ridge Road, Ellicott City, Maryland 21043 (301) 461-2680		

TENTATIVELY APPROVED  
ON 10/17/88  
DATE  
OFFICE OF PLANNING AND ZONING  
HOWARD COUNTY  
PLANNING DIRECTOR DATE

**PLAN**  
SCALE: 1"=100'

BRL = BUILDING RESTRICTION LINE

APPROVED FOR PRIVATE WATER AND PRIVATE SEWERAGE SYSTEMS FOR HOWARD COUNTY HEALTH DEPARTMENT

*Arthur E. Muegge* 3-6-89  
COUNTY HEALTH OFFICER DATE

	DESIGNED BY: D.B.S.
	DRAWN BY: D.S.
	PROJECT NO: 12404
	DATE: OCTOBER 20, 1988
	SCALE: AS SHOWN
	DRAWING NO. 3 OF 3