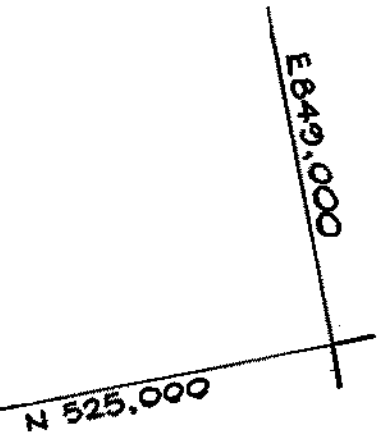
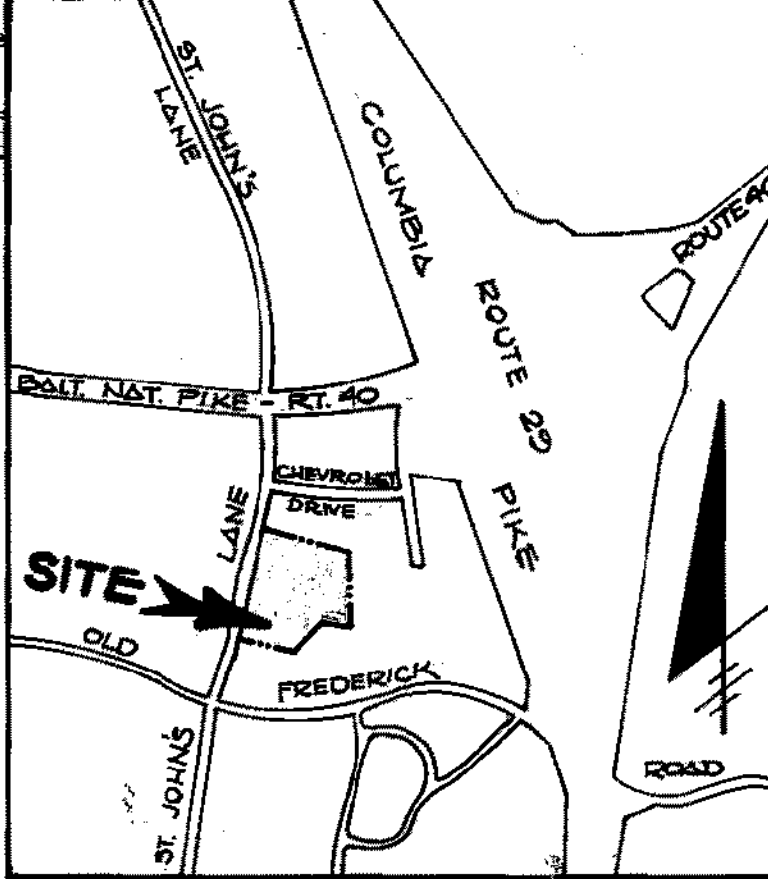


COORDINATE TABLE		
PT #	NORTHING	EASTING
425	524910.940	849271.137
420	524770.157	849819.023
113	524293.452	849834.064
120	524302.069	849708.071
428	524120.121	849511.690
426	524243.717	849135.752
425	524910.940	849241.137



DENSITY TABULATION							
OPEN SPACE PROVIDED	GROSS AREA	FLOODPLAIN STEEP SLOPES	NET AREA	NO. OF DWELLING UNITS ALLOWED	FLOODPLAIN ADJUSTMENT	TOTAL NO. OF DWELLING UNITS ALLOWED	DENSITY PER ACRE
1.73 AC ±	9.92 AC ±	0.08 AC ±	9.24 AC ±	20	—	20	2.18



- GENERAL NOTES**
- SUBJECT PROPERTY ZONED R-20
 - TOTAL AREA OF SUBDIVISION = 9.92 AC ±
 - TOTAL NUMBER OF LOTS = 21
 - TOTAL NUMBER OF BUILDABLE LOTS = 17
 - TOTAL AREA OF BUILDABLE LOTS = 6.45 AC ±
 - TOTAL AREA OF ROADWAY = 1.14 AC ±
 - TOTAL AREA OF OPEN SPACE REQUIRED = 1.73 AC ±
 - TOTAL AREA OF OPEN SPACE PROVIDED = 1.73 AC ±
 - PUBLIC WATER AND SEWER TO BE UTILIZED.
 - PERCENTAGE OF DRY GROUND OPEN SPACE = 80%.
 - B.R.L. DENOTES BUILDING RESTRICTION LINE.
 - SEE OFFICE OF PLANNING & ZONING FILE 5-88-104
 - S.W.M. WILL BE PROVIDED BY THE DETENTION METHOD.
 - TOTAL AREA OF FLOODPLAIN = 0.08 AC ±

TENTATIVELY APPROVED
ON 3-3-89
DATE
OFFICE OF PLANNING AND ZONING
HOWARD COUNTY
[Signature] 2/28/89
PLANNING DIRECTOR
T.R.

PRELIMINARY PLAN
WEST GATE WOODS
LOTS 1-21
SECOND ELECTION DISTRICT
HOWARD COUNTY, MARYLAND
TAX MAP 24 PARCEL 11G
SCALE: 1" = 50'
APRIL 21, 1988



FISHER, COLLINS AND CARTER, INC.
CIVIL ENGINEERS & LAND SURVEYORS
8380 COURT AVENUE
ELLICOTT CITY, MARYLAND 21043

OWNER AND DEVELOPER
JACK PECTOR
LAND DESIGN AND DEVELOPMENT INC.
8307 MAIN STREET
ELLICOTT CITY, MARYLAND 21043

MANDATORY OPEN SPACE TABULATION				
LOT SIZE	No. OF LOTS	AREA OF LOTS	MANDATORY AREA OF OPEN SPACE	SPACE - AC.
14,000 - 16,999	15	4.91 Ac.	30 %	1.47 Ac.
16,000 - 17,999	3	1.11 Ac.	20 %	0.22 Ac.
18,000 - 19,999	1	0.43 Ac.	10 %	0.04 Ac.
20,000 +	0	0	6 %	0
TOTALS	19	6.45 Ac.	—	1.73 Ac.