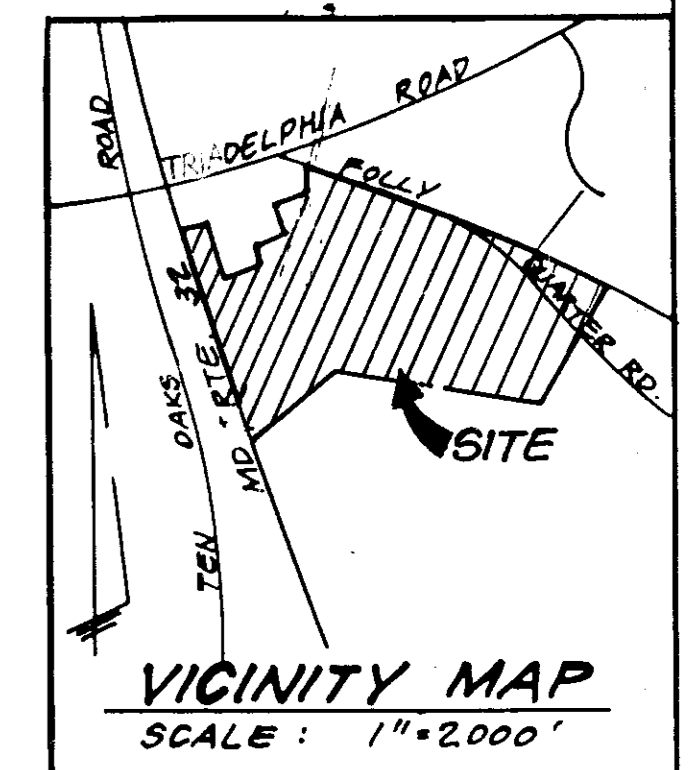


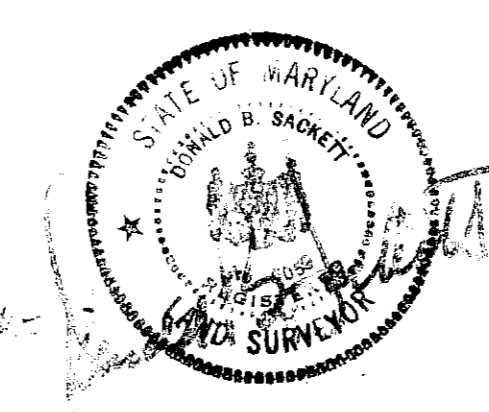



DESIGNED BY DEC. 7, 1987
 CHECKED BY PLANNING AND ENGINEERING
 HOWARD COUNTY
 PLANNING DIRECTOR 3.2.88
 35.

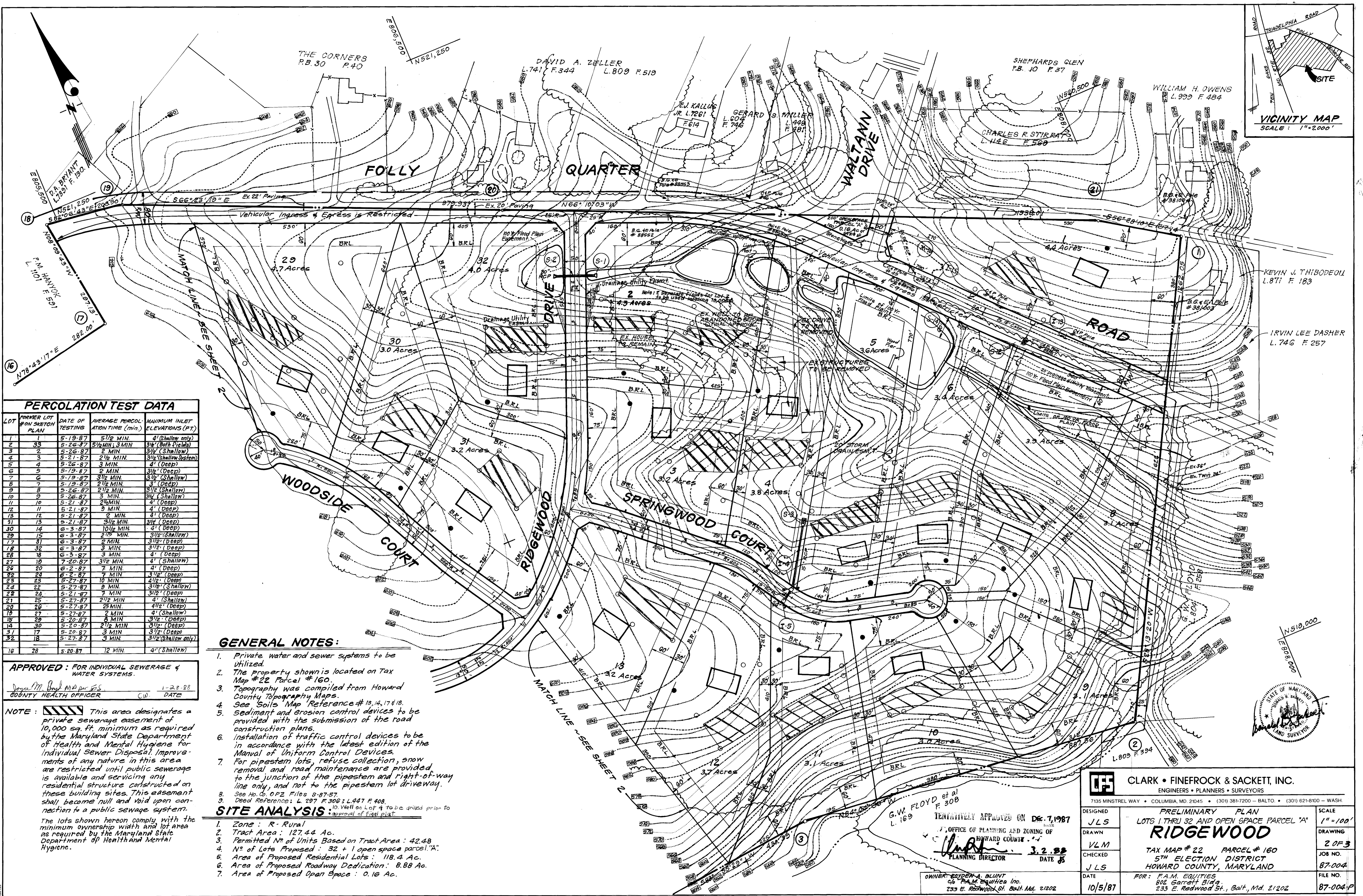


APPROVED: FOR INDIVIDUAL SEWERAGE & WATER SYSTEMS
James Bond
 COUNTY HEALTH OFFICER DATE 1-28-88

DWIMB ROYDEN A BLUNT
 c/o F.A.M. Equities Inc.
 233 E. Redwood St., Balt. Md. 21202



| | | | |
|--|--|----------------------|-------------------|
|  CLARK • FINEFROCK & SACKETT, INC. ENGINEERS • PLANNERS • SURVEYORS 7135 MINSTREL WAY • COLUMBIA, MD. 21045 • (301) 381-7200 - BALTO. • (301) 621-8100 - WASH. | | | |
| DESIGNED | COVER SHEET & LOCATION PLAN LOTS 1 THRU 32 AND OPEN SPACE PARCEL "A" RIDGEWOOD TAX MAP # 22 PARCEL # 160 5TH ELECTION DISTRICT HOWARD COUNTY, MARYLAND FOR: F.A.M. EQUITIES 802 Garsfield Bldg. 233 E. Redwood St., Balt., Md. 21202 | SCALE | |
| DRAWN | | 1" = 200' | |
| CHECKED | | DRAWING | |
| DATE | | 10/5/87 | 1 OF 3 |
| | | | JOB NO. 87-004 |
| | | FILE NO. 87-004-P | |



PERCOLATION TEST DATA

| LOT | FORMER LOT # ON SKETCH PLAN | DATE OF TESTING | AVERAGE PERCOLATION TIME (min.) | MAXIMUM INLET ELEVATIONS (FT.) |
|-----|-----------------------------|-----------------|---------------------------------|--------------------------------|
| 1 | 1 | 5-19-87 | 5 1/2 MIN. | 4' (Shallow only) |
| 2 | 33 | 6-26-87 | 5 1/2 MIN. 3 MIN. | 3 1/2' (Both Fields) |
| 3 | 2 | 5-26-87 | 2 MIN. | 3 1/2' (Shallow) |
| 4 | 3 | 5-21-87 | 2 1/2 MIN. | 3 1/2' (Shallow System) |
| 5 | 4 | 5-26-87 | 3 MIN. | 4' (Deep) |
| 6 | 5 | 5-19-87 | 2 MIN. | 3 1/2' (Deep) |
| 7 | 6 | 5-19-87 | 3 1/2 MIN. | 3 1/2' (Shallow) |
| 8 | 7 | 5-19-87 | 2 1/2 MIN. | 3' (Deep) |
| 9 | 8 | 5-26-87 | 2 1/2 MIN. | 3 1/2' (Shallow) |
| 10 | 9 | 5-26-87 | 3 MIN. | 3 1/2' (Shallow) |
| 11 | 10 | 5-21-87 | 2 1/2 MIN. | 4' (Deep) |
| 12 | 11 | 5-21-87 | 3 MIN. | 4' (Deep) |
| 13 | 12 | 5-21-87 | 2 MIN. | 4' (Deep) |
| 14 | 13 | 5-21-87 | 3 1/2 MIN. | 3 1/2' (Deep) |
| 15 | 14 | 6-3-87 | 10 1/2 MIN. | 4' (Deep) |
| 16 | 15 | 6-3-87 | 2 1/2 MIN. | 3 1/2' (Shallow) |
| 17 | 16 | 6-3-87 | 2 MIN. | 3 1/2' (Deep) |
| 18 | 17 | 6-3-87 | 3 MIN. | 3 1/2' (Deep) |
| 19 | 18 | 6-3-87 | 3 MIN. | 4' (Deep) |
| 20 | 19 | 7-20-87 | 3 1/2 MIN. | 4' (Shallow) |
| 21 | 20 | 6-2-87 | 7 MIN. | 4' (Deep) |
| 22 | 21 | 6-2-87 | 7 MIN. | 3 1/2' (Deep) |
| 23 | 22 | 5-27-87 | 10 MIN. | 4 1/2' (Deep) |
| 24 | 23 | 5-27-87 | 9 MIN. | 3 1/2' (Shallow) |
| 25 | 24 | 5-21-87 | 7 MIN. | 3 1/2' (Deep) |
| 26 | 25 | 5-27-87 | 2 1/2 MIN. | 4' (Shallow) |
| 27 | 26 | 5-27-87 | 23 MIN. | 4 1/2' (Deep) |
| 28 | 27 | 5-27-87 | 2 MIN. | 4' (Shallow) |
| 29 | 28 | 5-20-87 | 8 MIN. | 3 1/2' (Deep) |
| 30 | 29 | 5-20-87 | 2 1/2 MIN. | 3 1/2' (Deep) |
| 31 | 30 | 5-20-87 | 3 MIN. | 3 1/2' (Deep) |
| 32 | 31 | 5-27-87 | 9 MIN. | 3 1/2' (Shallow only) |
| 33 | 32 | 5-20-87 | 12 MIN. | 4' (Shallow) |

APPROVED: FOR INDIVIDUAL SEWERAGE & WATER SYSTEMS.

Jenna M. Boyd, M.D. per Sec. COUNTY HEALTH OFFICER
 1-28-88 DATE

NOTE: [Hatched Area] This area designates a private sewerage easement of 10,000 sq. ft. minimum as required by the Maryland State Department of Health and Mental Hygiene for Individual Sewer Disposal. Improvements of any nature in this area are restricted until public sewerage is available and servicing any residential structure constructed on these building sites. This easement shall become null and void upon connection to a public sewerage system.

The lots shown hereon comply with the minimum ownership width and lot area as required by the Maryland State Department of Health and Mental Hygiene.

GENERAL NOTES:

- Private water and sewer systems to be utilized.
- The property shown is located on Tax Map #22 Parcel #160.
- Topography was compiled from Howard County Topography Maps.
- See Soils Map Reference #13, 14, 17 & 18.
- Sediment and erosion control devices to be provided with the submission of the road construction plans.
- Installation of traffic control devices to be in accordance with the latest edition of the Manual of Uniform Control Devices.
- For pipestem lots, refuse collection, snow removal and road maintenance are provided to the junction of the pipestem and right-of-way line only, and not to the pipestem lot driveway.
- See Ho. Co. OPZ Files 8-87-87.
- Deed Reference: L 297 F.308 & L 447 F.408.

SITE ANALYSIS:

- Zone: R - Rural
- Tract Area: 127.44 Ac.
- Permitted No of Units Based on Tract Area: 42.48
- No of Lots Proposed: 32 + 1 open space parcel "A"
- Area of Proposed Residential Lots: 118.4 Ac.
- Area of Proposed Roadway Dedication: 8.88 Ac.
- Area of Proposed Open Space: 0.16 Ac.

OWNER: GAVEN A. BLUNT
 c/o PALM EQUITIES Inc.
 235 E. Redwood St. Baltimore, Md. 21202

G.W. FLOYD et al
 L. 169

TENTATIVELY APPROVED ON Dec. 7, 1987
 OFFICE OF PLANNING AND ZONING OF
 HOWARD COUNTY, MD.
 PLANNING DIRECTOR
 DATE 3.2.88

CLARK • FINEFROCK & SACKETT, INC.
 ENGINEERS • PLANNERS • SURVEYORS
 7135 MNISTREL WAY • COLUMBIA, MD. 21045 • (301) 381-7200 - BALTO. • (301) 621-8100 - WASH.

DESIGNED: JLS
 DRAWN: VLM
 CHECKED: JLS
 DATE: 10/5/87

PRELIMINARY PLAN
 LOTS 1 THRU 32 AND OPEN SPACE PARCEL "A"
RIDGEWOOD
 TAX MAP # 22 PARCEL # 160
 5TH ELECTION DISTRICT
 HOWARD COUNTY, MARYLAND

SCALE: 1" = 100'
 DRAWING: 2 OF 3
 JOB NO.: 87-004
 FILE NO.: 87-004-P

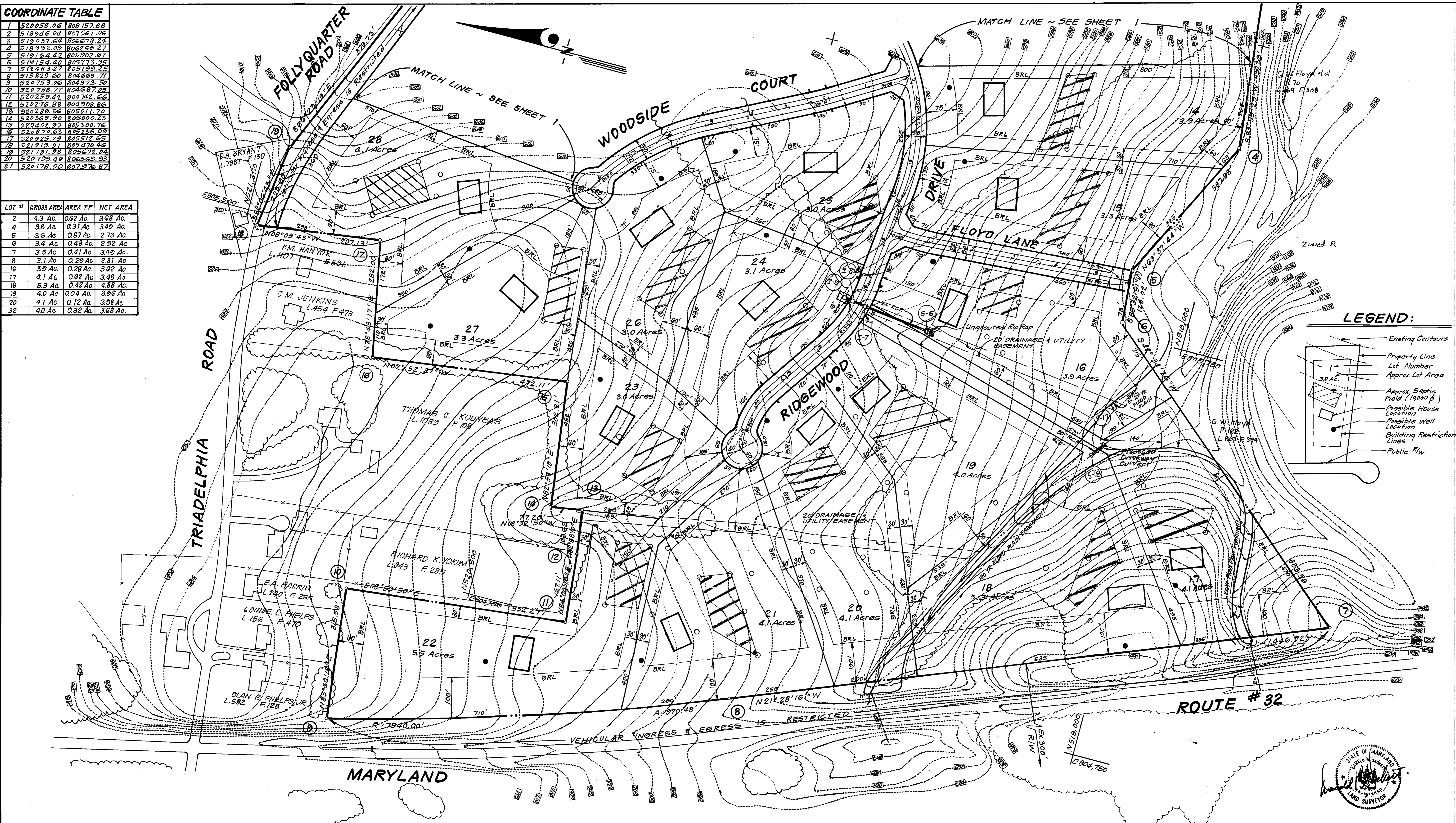
FOR: F.A.M. EQUITIES
 802 Garrett Bldg.
 235 E. Redwood St., Balt., Md. 21202



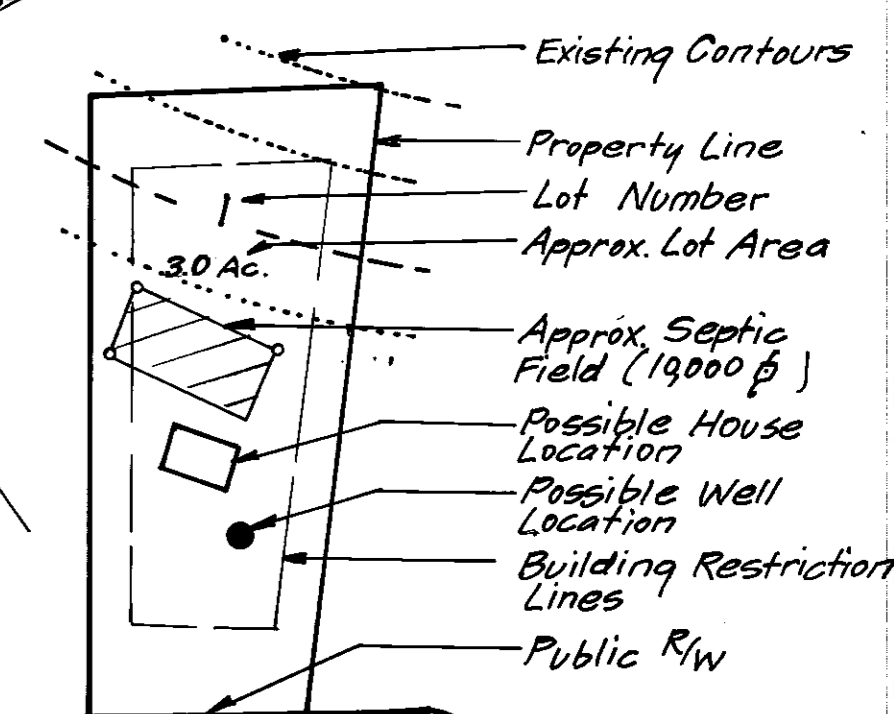
COORDINATE TABLE

| | | |
|----|-----------|-----------|
| 1 | 520058.06 | 808157.88 |
| 2 | 518946.04 | 807561.06 |
| 3 | 519037.64 | 806678.24 |
| 4 | 518992.09 | 806250.27 |
| 5 | 519164.42 | 805902.67 |
| 6 | 519154.40 | 805773.95 |
| 7 | 518483.27 | 805199.23 |
| 8 | 519829.60 | 804669.70 |
| 9 | 520763.06 | 804373.50 |
| 10 | 520788.77 | 804087.05 |
| 11 | 520259.42 | 804742.66 |
| 12 | 520276.88 | 804908.86 |
| 13 | 520289.56 | 805011.70 |
| 14 | 520365.90 | 805000.23 |
| 15 | 520402.97 | 805300.76 |
| 16 | 520876.63 | 805236.09 |
| 17 | 520925.79 | 805512.65 |
| 18 | 521219.91 | 805470.62 |
| 19 | 521191.98 | 805672.04 |
| 20 | 520799.49 | 806562.83 |
| 21 | 520178.00 | 807276.87 |

| LOT # | GROSS AREA | AREA FP | NET AREA |
|-------|------------|----------|----------|
| 2 | 4.3 Ac. | 0.62 Ac. | 3.68 Ac. |
| 4 | 3.8 Ac. | 0.31 Ac. | 3.49 Ac. |
| 5 | 3.6 Ac. | 0.87 Ac. | 2.73 Ac. |
| 6 | 3.4 Ac. | 0.88 Ac. | 2.52 Ac. |
| 7 | 3.9 Ac. | 0.41 Ac. | 3.49 Ac. |
| 8 | 3.1 Ac. | 0.29 Ac. | 2.81 Ac. |
| 16 | 3.0 Ac. | 0.28 Ac. | 2.72 Ac. |
| 17 | 4.1 Ac. | 0.02 Ac. | 4.08 Ac. |
| 18 | 5.3 Ac. | 0.42 Ac. | 4.88 Ac. |
| 19 | 4.0 Ac. | 0.04 Ac. | 3.96 Ac. |
| 20 | 4.1 Ac. | 0.12 Ac. | 3.98 Ac. |
| 32 | 4.0 Ac. | 0.32 Ac. | 3.68 Ac. |



LEGEND:



APPROVED: FOR INDIVIDUAL SEWERAGE & WATER SYSTEMS
 [Signature] 1-28-88
 COUNTY HEALTH OFFICER DATE

RECEIVED AND APPROVED ON DEC. 7, 1987
 OFFICE OF PLANNING AND ZONING OF HOWARD COUNTY
 [Signature] 3.2.88
 PLANNING DIRECTOR DATE

OWNER: ROYDEN A. BLUNT
 % F.A.M. EQUITIES INC.
 233 E. Redwood St. Balt. Md. 21202

CLARK • FINEFROCK & SACKETT, INC.
 ENGINEERS • PLANNERS • SURVEYORS
 7135 MINISTREL WAY • COLUMBIA, MD. 21045 • (301) 381-7200 - BALTO. • (301) 621-8100 - WASH.

| | | | | |
|---|---------|--|----------|-----------|
| DESIGNED | JLS | PRELIMINARY PLAN LOTS 1 THRU 32 AND OPEN SPACE PARCEL "A" RIDGEWOOD TAX MAP # 22 PARCEL # 160 5TH ELECTION DISTRICT HOWARD COUNTY, MARYLAND | SCALE | 1" = 100' |
| DRAWN | VLM | | DRAWING | 3 OF 3 |
| CHECKED | JLS | | JOB NO. | 87-004 |
| DATE | 10/5/87 | | FILE NO. | 87-004-P |
| FOR: F.A.M. EQUITIES 802 Garrett Bldg. 233 E. Redwood St., Balt., Md. 21202 | | | | |