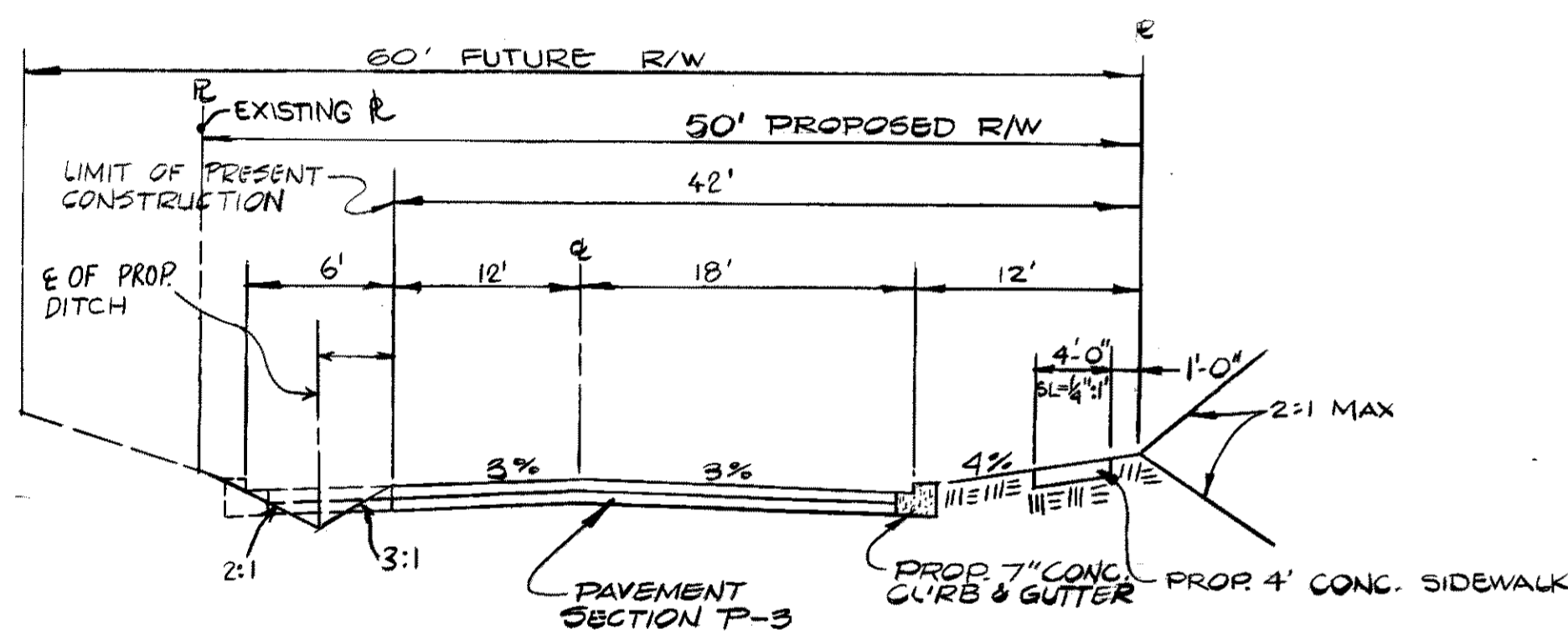


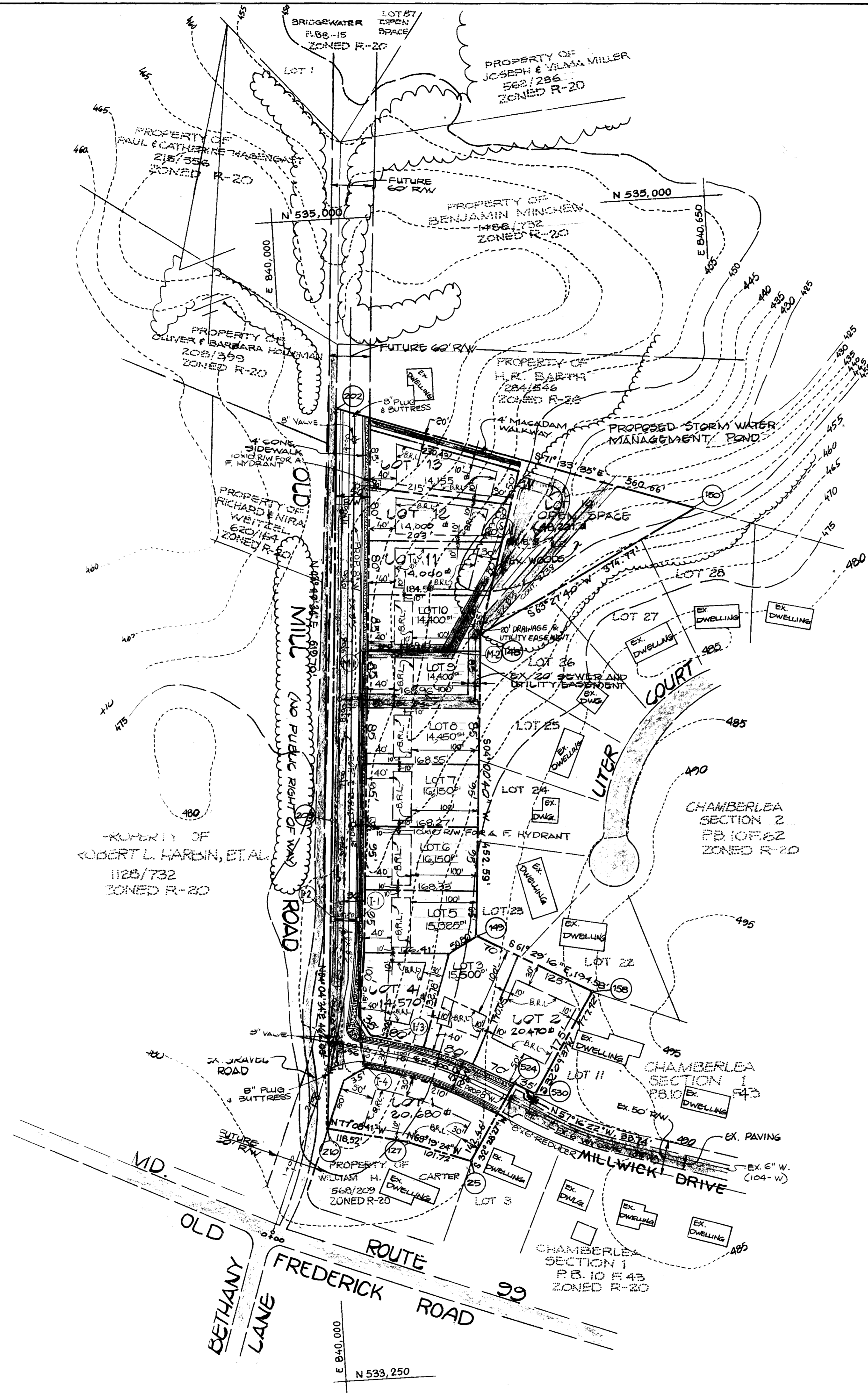
DENSITY TABULATION					
SECTION	OPEN SPACE REQUIRED	OPEN SPACE PROVIDED	GROSS AREA	FLOOD PLAIN	STEEP SLOPES
1	1.107 AC.±	1.107 AC.±	7.125 AC.±		N/A
NET AREA	NUMBER OF DWELLING UNITS ALLOWED	FLOOD PLAIN LOT ADJUSTMENT	TOTAL NO. OF DWELLING UNITS PROPOSED	TOTAL NO. OF DWELLING UNITS ALLOWED	DENSITY PER ACRE
7.125 AC.±	15.5	N/A	13	15.5	1.82

LOT SIZE AND MANDATORY OPEN SPACE				
LOT SIZE	NO. OF LOTS	AREA OF LOTS (AC)	MANDATORY OPEN SPACE	AREA OF OPEN SPACE (AC)
14,000-15,999	9	3.005	30%	0.902
16,000-17,999	2	0.740	20%	0.148
18,000-19,999	--	--	10%	--
20,000 OR >	2	0.945	6%	0.057
TOTALS	13	4.690	--	1.107

COORDINATE TABLE		
NO.	NORTH	EAST
28	533,572.78	841,205.47
127	533,628.70	841,110.23
210	533,635.07	840,994.73
209	534,095.90	841,027.57
202	534,714.22	841,068.93
150	534,596.87	841,600.80
148	534,369.42	841,265.52
149	533,217.24	841,233.06
158	533,825.06	841,404.83
530	533,674.86	841,310.39
524	533,692.96	841,281.96



TYPICAL SECTION
OLD MILL ROAD
NO SCALE



GENERAL NOTES:

- SUBJECT PROPERTY ZONED R-20
- TOTAL NUMBER OF PROPOSED BUILDABLE LOTS: 3
- TOTAL AREA OF BUILDABLE LOTS: 4.692 AC.±
- TOTAL AREA OF OPEN SPACE REQUIRED: 1.107 AC.±
- TOTAL AREA OF OPEN SPACE PROVIDED: 1.107 AC.±
- TOTAL AREA OF ROADWAY: 1.326 AC.±
- TOTAL AREA OF SUBDIVISION: 7.125 AC.±
- PUBLIC WATER AND SEWER TO BE UTILIZED.
- STORM WATER MANAGEMENT WILL BE PROVIDED BY THE DETENTION METHOD.
- SITE IS WOODED WITH VEGETATIVE GROWTH.

TENTATIVELY APPROVED ON Nov. 30, 1987
 OFFICE OF PLANNING AND ZONING OF
 HOWARD COUNTY
 [Signature]
 PLANNING DIRECTOR 12-10-87
 DATE R

PRELIMINARY PLAN
 OLD MILL
 LOTS 1-14

2nd ELECTION DISTRICT
 HOWARD COUNTY, MARYLAND
 TAX MAP 17 PARCEL 498 ZONING MAP 17
 SCALE: 1"=100' AUGUST 31, 1987 S-87-82 P.88-16, AA87-25

FISHER, COLLINS AND CARTER, INC.
 CIVIL ENGINEERS AND LAND SURVEYORS
 8388 COURT AVE.
 ELLICOTT CITY, MARYLAND 21043

OWNER
 ROLAND STIRN
 2101 SUNSET KEY
 FORT LAUDERDALE, FLORIDA 33304

DEVELOPER
 HEMPHILL ASSOCIATES
 CO HOWARD COUNTY LAND SERVICES
 8307 MAIN STREET
 ELLICOTT CITY, MARYLAND 21043

