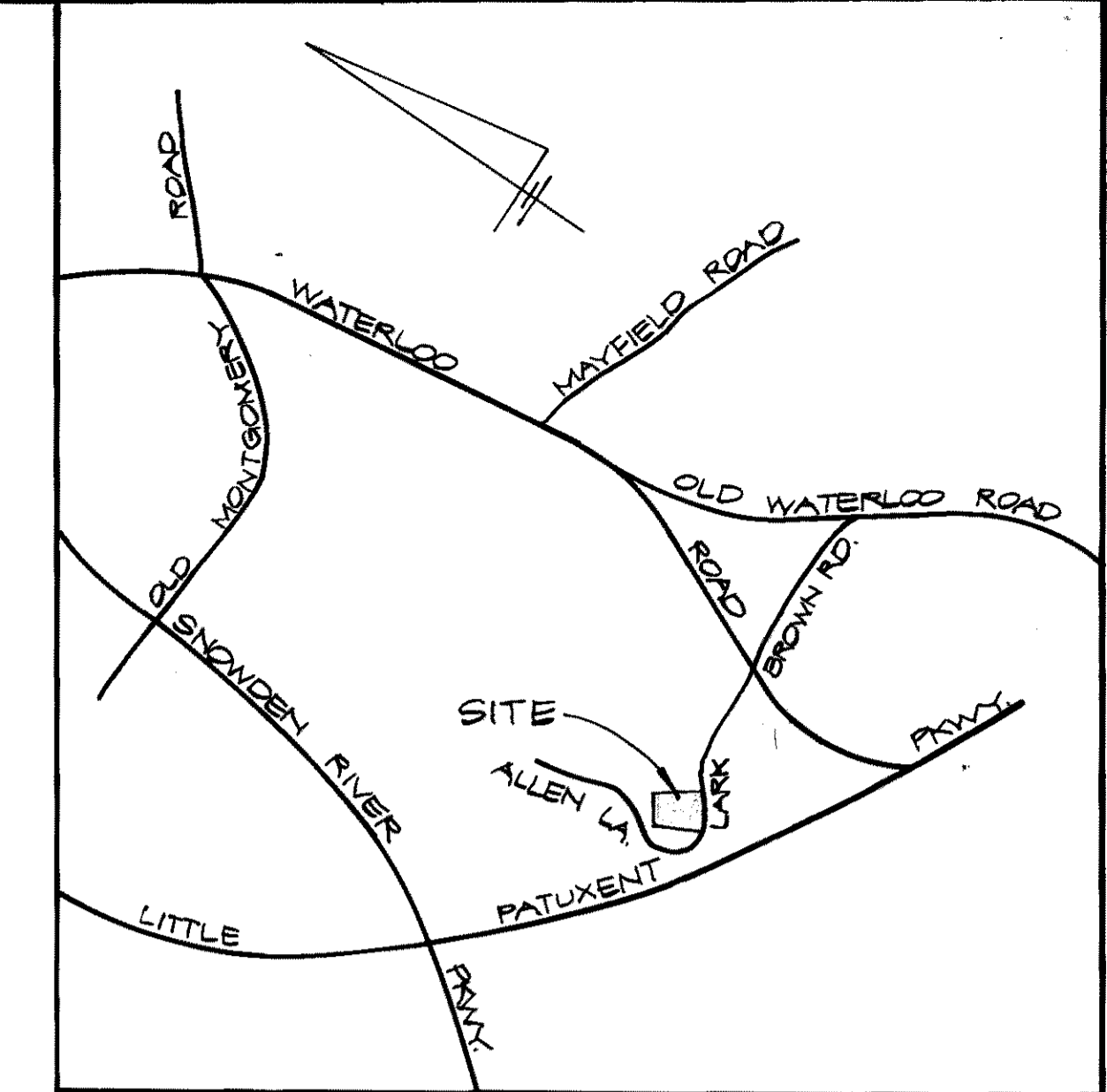


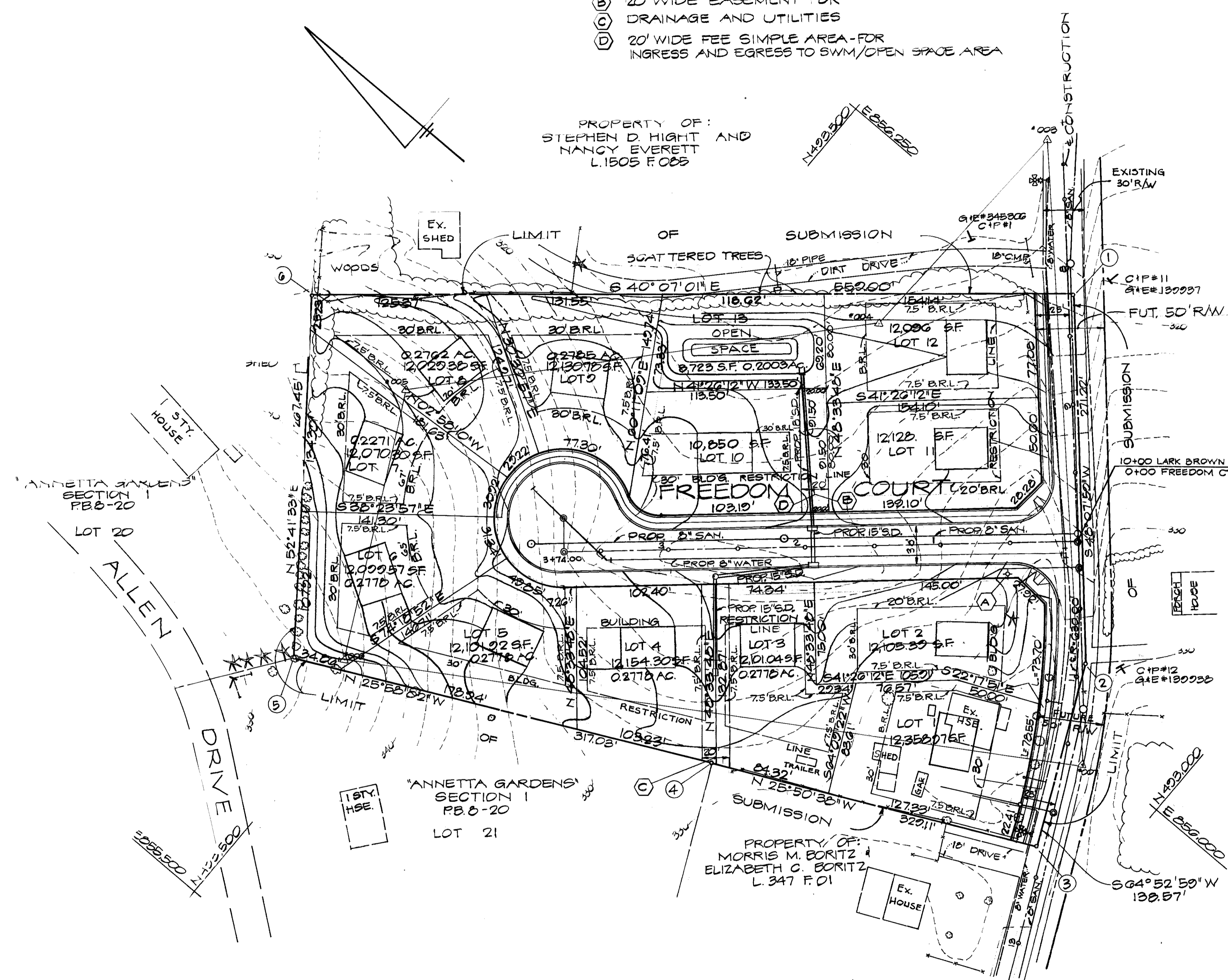
NO.	NORTH	EAST
1	493,293.91	856,247.16
2	493,097.74	856,024.93
3	493,050.02	855,923.14
4	493,270.22	855,816.48
5	493,555.24	855,677.67
6	493,717.33	855,500.89



VICINITY MAP  
SCALE: 1"=2,000'

- (B) 20' WIDE EASEMENT FOR DRAINAGE AND UTILITIES
- (C) 20' WIDE TREE SIMPLE AREA-FOR INGRESS AND EGRESS TO SWM/OPEN SPACE AREA

PROPERTY OF:  
STEPHEN D. HIGHT AND  
NANCY EVERETT  
L.1505 F.025



LARK BROWN ROAD

**SITE ANALYSIS**

- ZONING: R-12 (PER AUGUST 2, 1985 COMPREHENSIVE ZONING PLAN)
- NO. OF PROPOSED LOTS: 13, WITH 12 BUILDABLE LOTS. LOT NO. 13 TO BE DEDICATED FOR STORM WATER MANAGEMENT & OPEN SPACE.
- PUBLIC WATER AND PUBLIC SEWER TO BE UTILIZED.
- TOPOGRAPHY SHOWN IS BASED ON MARYLAND STATE GRID DATUM.
- CONTOUR INTERVALS AT 2 FOOT.
- OPEN SPACE FEE WILL BE PAID FOR LOTS NO.1 THRU INCLUSIVE, LOT 11, 12 AND 13. (LOT 13-SWM FACILITY)
- TABULATION TABLE

LOT SIZE AND MANDATORY OPEN SPACE PROVISIONS RE: SECTION 107-E2 (R-12 DISTRICT) ZONING REGULATIONS.

LOT SIZE (SQ. FEET)	NO. OF LOTS	AREA OF LOTS (AC)	MANDATORY OPEN SPACE PROVISIONS	AREA OF OPEN SPACE IN ACRES
12000 OR LARGER	11	3.0906	SUBDIVISION REGULATIONS	OPEN SPACE FEE TO BE
10,850 (LOT #10)	1	0.2491	"	0.0434
OPEN SPACE/SWM	1	0.2003	"	0.2003
<b>TOTALS</b>	<b>13</b>	<b>3.5402</b>	"	<b>OPEN SPACE FEE TO BE PAID (LOT 13)</b>

- GROSS AREA OF TRACT : 4.4110 ACRES.
- TOTAL AREA OF VEHICULAR R/W : 0.8708 AC.
- SEDIMENT AND EROSION CONTROL MEASURES WILL BE PROVIDED WITH THE SUBMISSION OF SITE DEVELOPMENT & ROAD CONSTRUCTION PLANS.
- SEE OFFICE OF PLANNING AND ZONING FILE #S-87-62
- SEE LIBER 281 FOLIO 493
- LANDSCAPING MEASURES WILL BE PROVIDED WITH THE SUBMISSION OF A LANDSCAPE PLAN.
- ALL EXISTING STRUCTURES ON LOT NO.1 WILL BE RAZED, AND EXISTING TRAILER ON LOT NO.3 WILL BE REMOVED.
- MATURE TREES TO REMAIN UNDISTURBED WHEREVER POSSIBLE.

NOTE:  
(A) THE PROPOSED STREET LIGHT HARDWARE SHALL BE A 250-WATT MERCURY VAPOR LAMP PENDANT MOUNTED FIXTURE ON A 30 FOOT GALVANIZED STEEL POLE, LOCATED 6 FEET MINIMUM FROM THE EDGE OF PAVING AS SHOWN, STA. 0+50 LT. (FREEDOM CT.)

TENTATIVELY APPROVED ON Nov. 17, 1987  
DATE  
OFFICE OF PLANNING AND ZONING OF  
HOWARD COUNTY  
*[Signature]*  
PLANNING DIRECTOR  
12.31.87  
DATE 2



**PRELIMINARY PLAN FOR LARK BROWN ESTATES**

6<sup>TH</sup> ELECTION DISTRICT HOWARD COUNTY, MD  
PARCEL 322  
TAX MAP 37 DATE: AUG. 11, 1987  
SCALE: 1"=50' CHECKED BY: D.E.H.  
DRAWN BY: L.A.W. S-87-62  
F-88-14

HICKS ENGINEERING COMPANY, INC.  
200 EAST JOPPA ROAD - SUITE 402  
TOWSON, MARYLAND 21204  
(301) 494-0001

OWNER  
JESSIE M. LYONS  
8400 LARK BROWN RD.  
COLUMBIA, MD. 21045  
799-5242

DEVELOPER  
DR. PRADIP GHOSH  
3651 DOVES FLY WAY  
LAUREL, MD. 20707  
792-0766