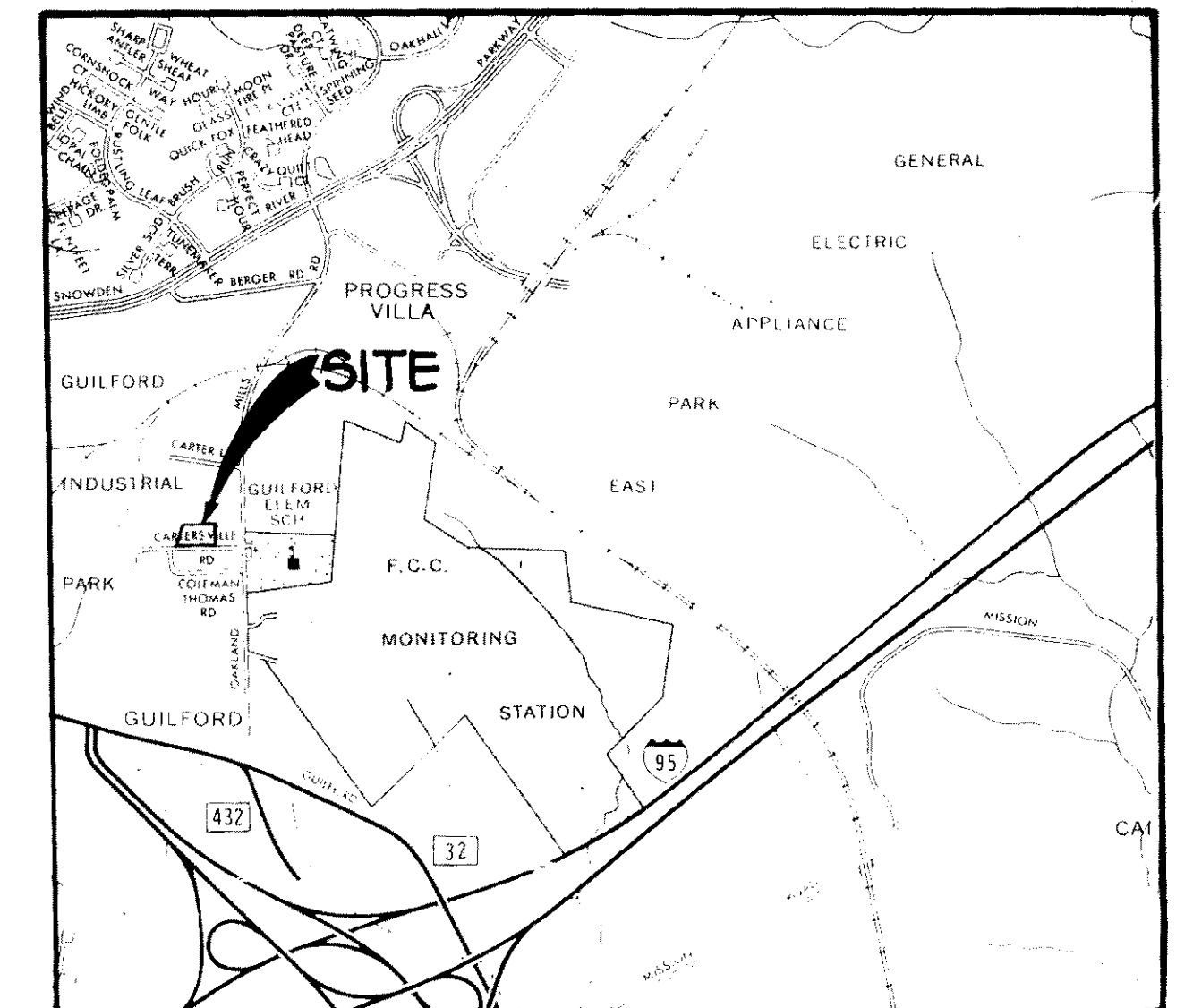
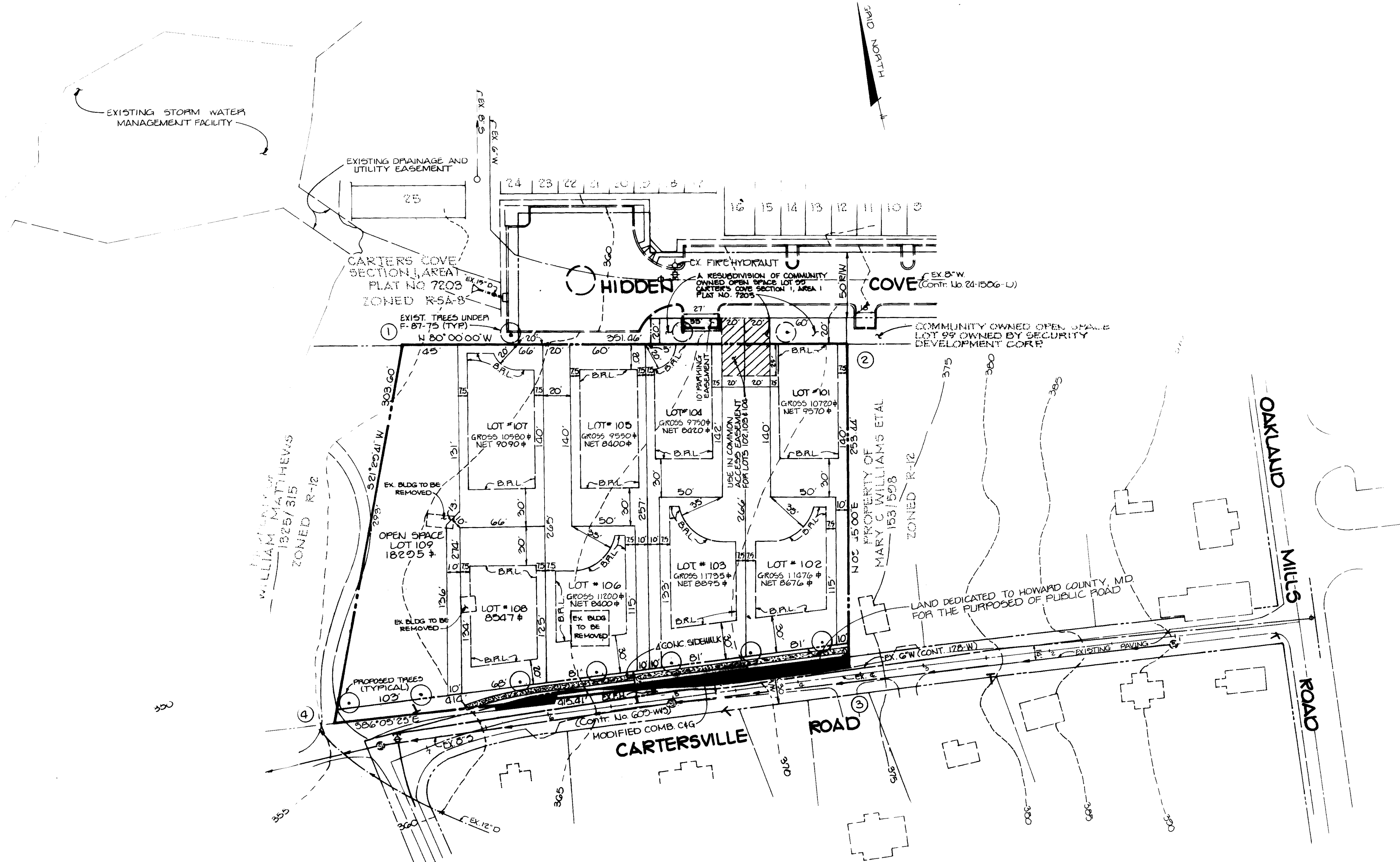


COORDINATES		
POINT	NORTH	EAST
1	487219.210	846581.582
2	487258.280	846927.701
3	487008.501	846884.781
4	487036.826	846470.339



VICINITY MAP  
SCALE: 1"=2000'



PLAN  
SCALE: 1"=50'

- GENERAL NOTES
1. LOCAL WATER AND SANITARY SEWER ARE EXISTING FOR THIS DEVELOPMENT.
  2. STORM WATER MANAGEMENT PROVIDED UNDER CARTERS COVE SECTION 1 F-87-75.
  3. CONTOURS SHOWN HEREON WERE DEVELOPED FROM HOWARD COUNTY TOPOGRAPHY MAPS.
  4. SUBJECT PROPERTY ZONED R-12.

SPACE TABULATION

GROSS AREA	2.47 Ac
AREA OF PROPOSED LOTS	2.34 Ac
AREA OF ROAD R/W	
INCLUDING WIDENING STRIPS	0.3 Ac
NUMBER OF PROPOSED LOTS	6 BUILDABLE (10/100)
	1 OPEN SPACE (1/10)

SPACE TABULATION

LOT SIZE (sq. ft.)	NO. OF LOTS	AREA OF LOTS (Ac)	MANDATORY OPEN SPACE PROVISION	AREA OF OPEN SPACE
2000 OR LARGER	0	0	8%	0
1800 - 1999	1	0.25	10%	0.03
1600 - 1799	2	0.47	20%	0.09
1400 - 1599	3	1.01	30%	0.03
TOTAL				0.12 Ac
OPEN SPACE PROVIDED				0.42 Ac

TEMPORARILY APPROVED ON Nov 30, 1987  
 OFFICE OF PLANNING AND ZONING OF  
 HOWARD COUNTY  
 PLANNING DIRECTOR  
 DATE 1.20.88

NO.	DATE	REVISION
<p>TRACY, SCHULTE &amp; ASSOCIATES INC.            planning • architecture • engineering            8480 Baltimore National Pike • Ellicott City, Maryland 21043 • (301) 465-6105</p>		
<p>OWNER            SECURITY DEVELOPMENT CORP.            8480 BALTIMORE NATIONAL PIKE            ELICOTT CITY, MARYLAND 21043</p>		<p>PROJECT  <b>CARTERS COVE</b>            SECTION 2</p>
<p>DEVELOPER            SECURITY DEVELOPMENT CORP.            8480 BALTIMORE NATIONAL PIKE            ELICOTT CITY, MARYLAND 21043</p>		<p>LOCATION            TAX MAP NO 42            PARCEL NOS 332 &amp; 218            6TH ELECTION DISTRICT            HOWARD COUNTY, MARYLAND 5-87-87</p>
<p>TITLE  <b>PRELIMINARY PLAN</b></p>		
<p>DATE            AUGUST 13, 1987            OCTOBER 2, 1987</p>		<p>PROJECT NO 8772</p>
DES. DAM	DRN JH/JCA	SCALE AS SHOWN DRAWING 1 OF 1