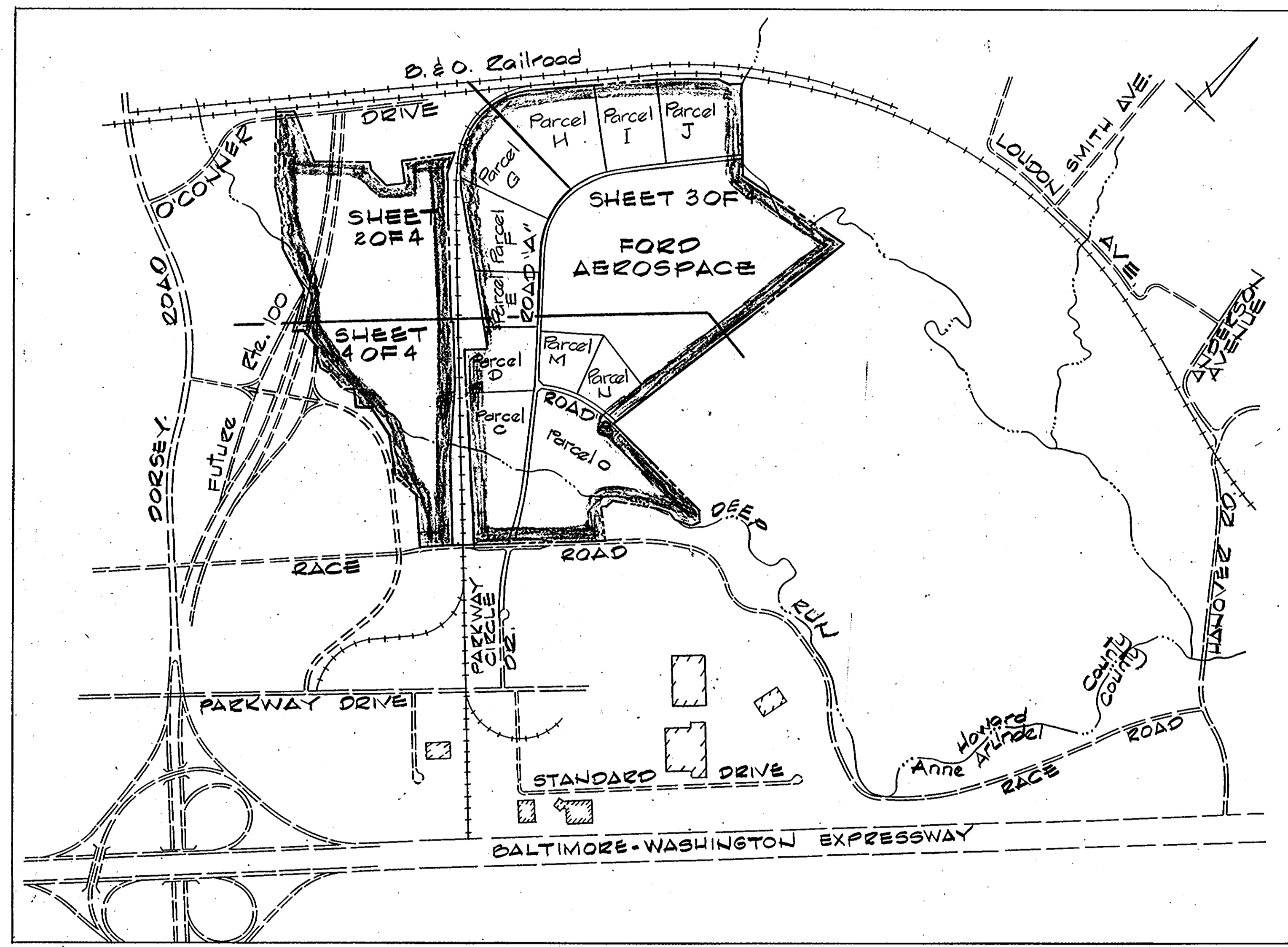


VICINITY MAP
Scale: 1" = 2000'

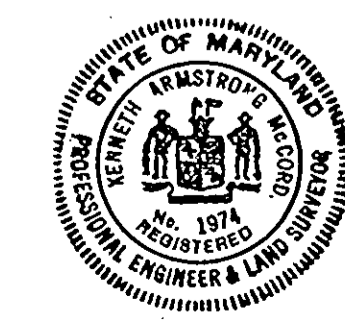


SHEET INDEX PLAN
Scale: 1" = 600'

GENERAL NOTES

	Howard County	Anne Arundel Co.	Total
1. Existing Zoning	M-2, Manufacturing-Heavy	R-1, Residential & O.S. Open Space	
2. Gross Area of Tract	179.5± Acres	17.8± Acres	197.0± Acres
3. Area of Proposed Lots	171.8± Acres	16.5± Acres	188.3± Acres
4. Area of Proposed Roads	7.7± Acres	1.0± Acres	8.7± Acres
5. Total Lots Proposed	15	4	19
	Buildable	14	17
	Open Space	1	2
6. Public water and sewer are proposed for this site.			
7. Required Open Space for M-2 Zoning (20%) = 35.9± Ac.			
8. Proposed Open Space 45.2± Ac.			
9. See Office of Planning & Zoning files 587-66			

TENTATIVELY APPROVED ON JUNE 23, 1987
 OFFICE OF PLANNING AND ZONING OF
 HOWARD COUNTY
[Signature]
 PLANNING DIRECTOR DATE 9-21-87
 DATE 2



HI-TECH VENTURE LIMITED PARTNERSHIP
 OWNER AND DEVELOPER
 7223 PARKWAY DRIVE
 HANOVER, MARYLAND 21076

WHITMAN, REQUARDT AND ASSOCIATES
 ENGINEERS
 2315 SAINT PAUL STREET
 BALTIMORE, MARYLAND 21218
[Signature] 4/29/87
 KENNETH A. MCCORD NO. 1974 DATE:

PRELIMINARY PLAN

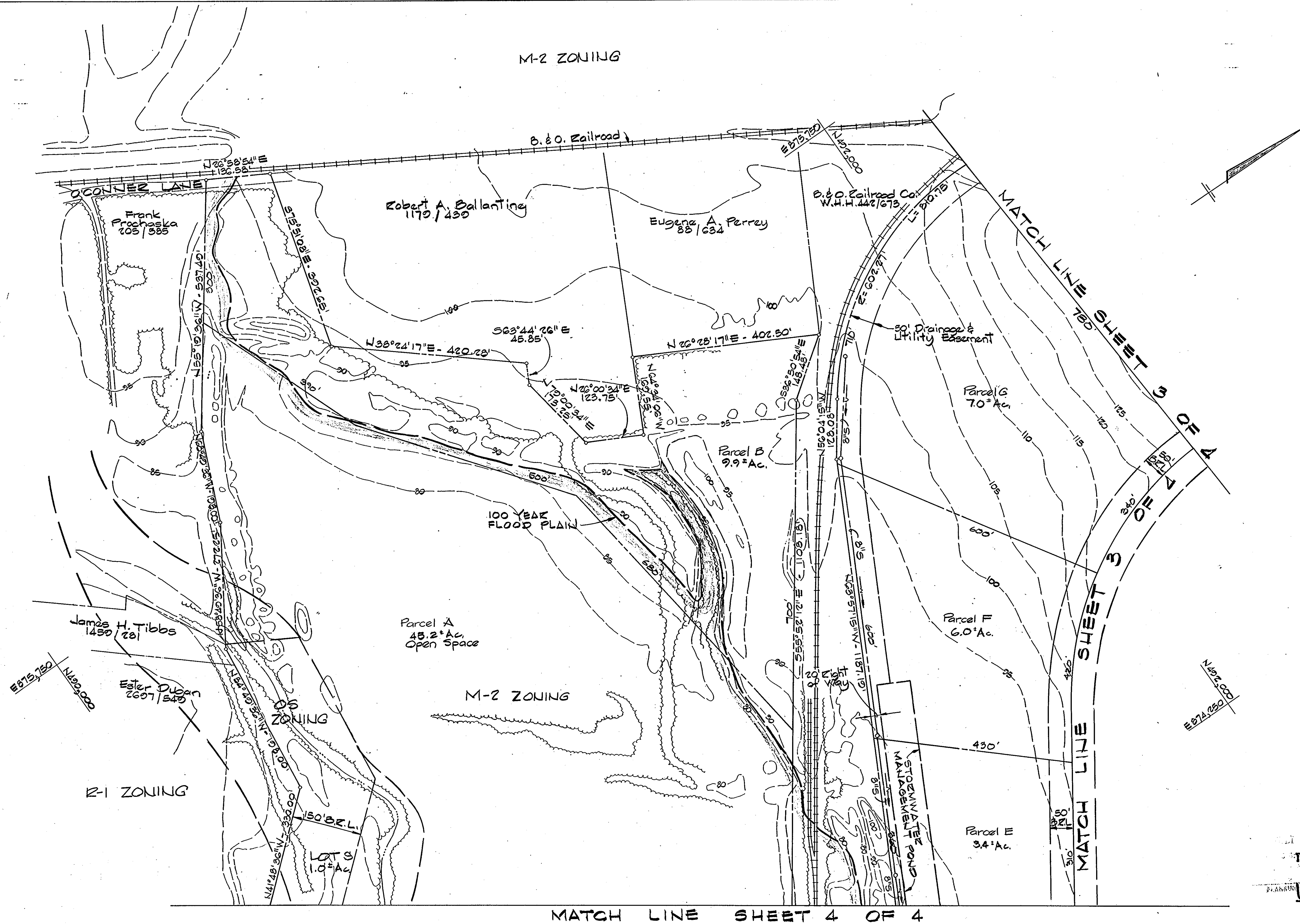
PARKWAY CENTER-ARUNDEL TRACT

1ST. ELECT. DISTRICT
 HOWARD CO. MD.
 TAX MAPS 33, 44

1ST. ELECT. DISTRICT
 ANNE ARUNDEL CO., MD.
 TAX MAP 8

Date: APRIL 29, 1987
 Scale: As Shown

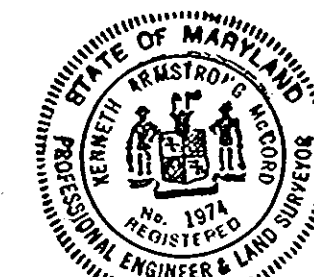
Sheet 1 of 4



TENTATIVELY APPROVED ON JUNE 23, 1987
 OFFICE OF PLANNING AND ZONING OF
 HOWARD COUNTY
 PLANNING DIRECTOR: *[Signature]* DATE: 9-21-87

HI-TECH VENTURE LIMITED PARTNERSHIP
 OWNER AND DEVELOPER
 7223 PARKWAY DRIVE
 HANOVER, MARYLAND 21076

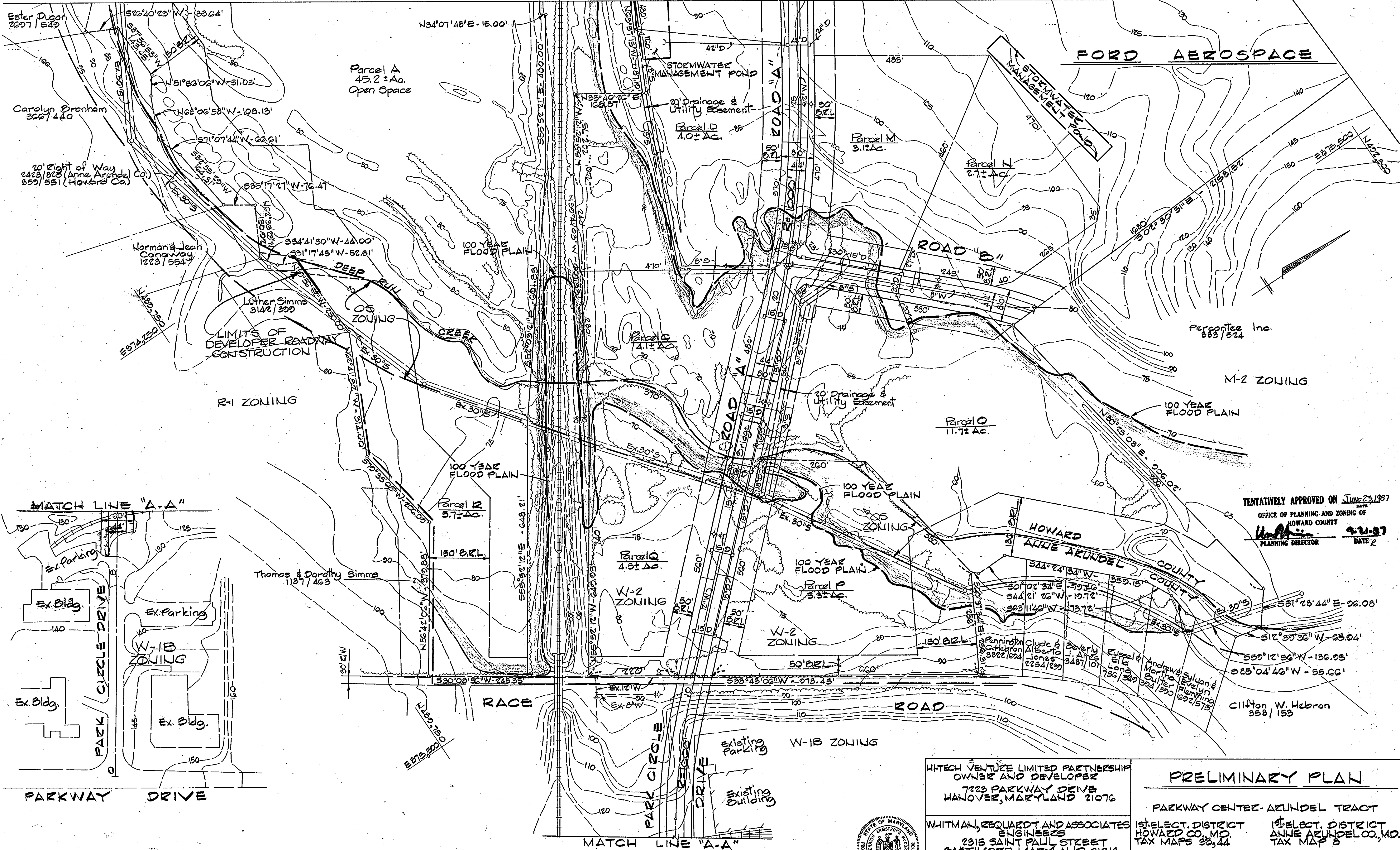
WHITMAN, REQUAEDT AND ASSOCIATES
 ENGINEERS
 2315 SAINT PAUL STREET
 BALTIMORE, MARYLAND 21218
[Signature] 4/29/87
 KENNETH A. MCCORD NO. 1974 DATE



PRELIMINARY PLAN
 PARKWAY CENTER-ARUNDEL TRACT
 1ST ELECT. DISTRICT HOWARD CO., MD. TAX MAPS 38, 44
 1ST ELECT. DISTRICT ANNE ARUNDEL CO., MD. TAX MAP 8

Date: APRIL 29, 1987
 Scale: 1"=100'
 Sheet 2 of 4

MATCH LINE SHEET 2 OF 4



TENTATIVELY APPROVED ON JUNE 23, 1987
 DATE
 OFFICE OF PLANNING AND ZONING OF
 HOWARD COUNTY
Whitman
 PLANNING DIRECTOR
9-21-87
 DATE 2

HITECH VENTURE LIMITED PARTNERSHIP
 OWNER AND DEVELOPER
 7223 PARKWAY DRIVE
 HANOVER, MARYLAND 21076

WHITMAN, REQUARDT AND ASSOCIATES
 ENGINEERS
 2315 SAINT PAUL STREET
 BALTIMORE, MARYLAND 21218
Kenneth A. McCord
 4/23/87
 KENNETH A. MCCORD NO. 974 DATE:



PRELIMINARY PLAN

PARKWAY CENTER-ARUNDEL TRACT

1ST ELECT. DISTRICT
 HOWARD CO., MD.
 TAX MAPS 33, 44

1ST ELECT. DISTRICT
 ANNE ARUNDEL CO., MD.
 TAX MAP 8

Date: April 29, 1987
 Scale: 1" = 100'