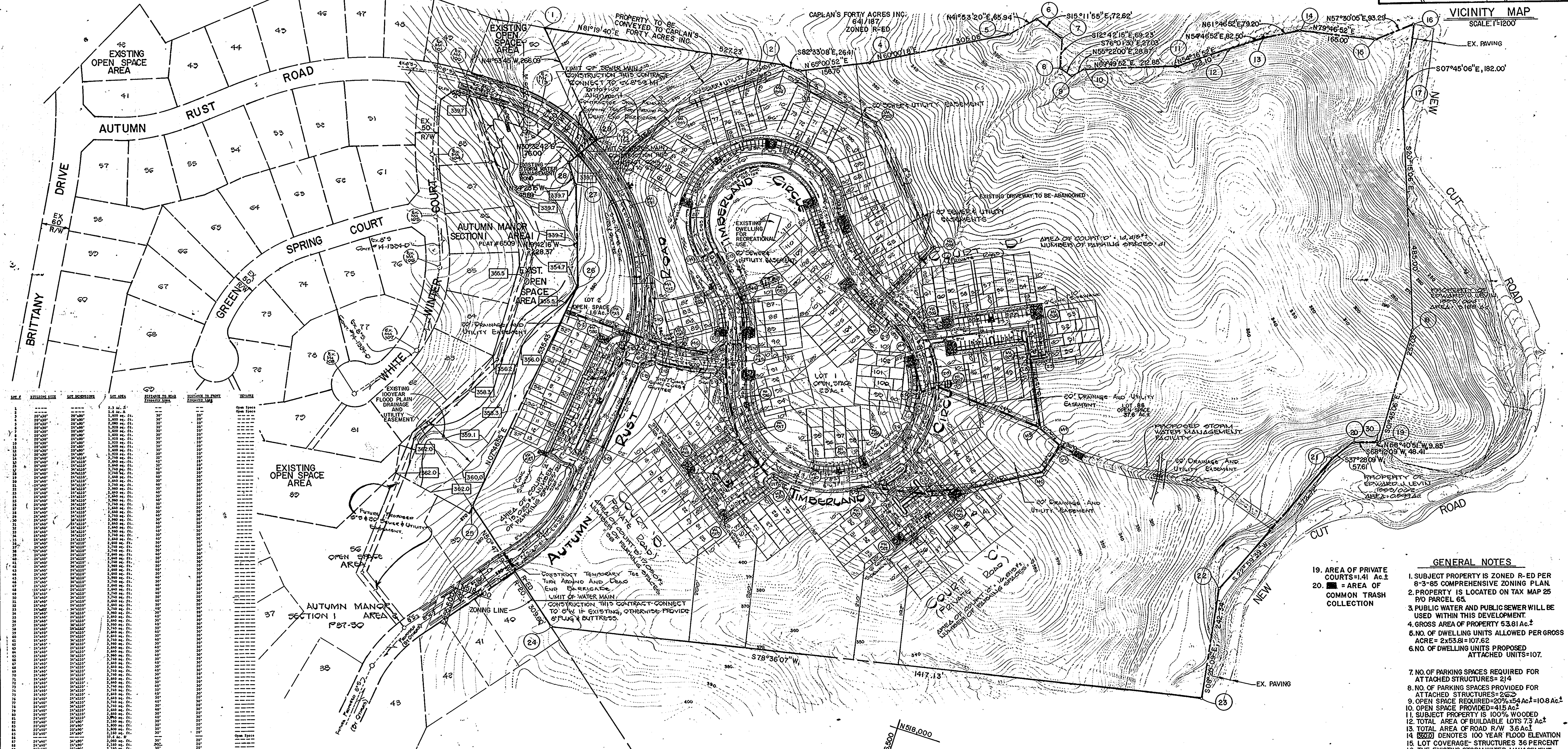
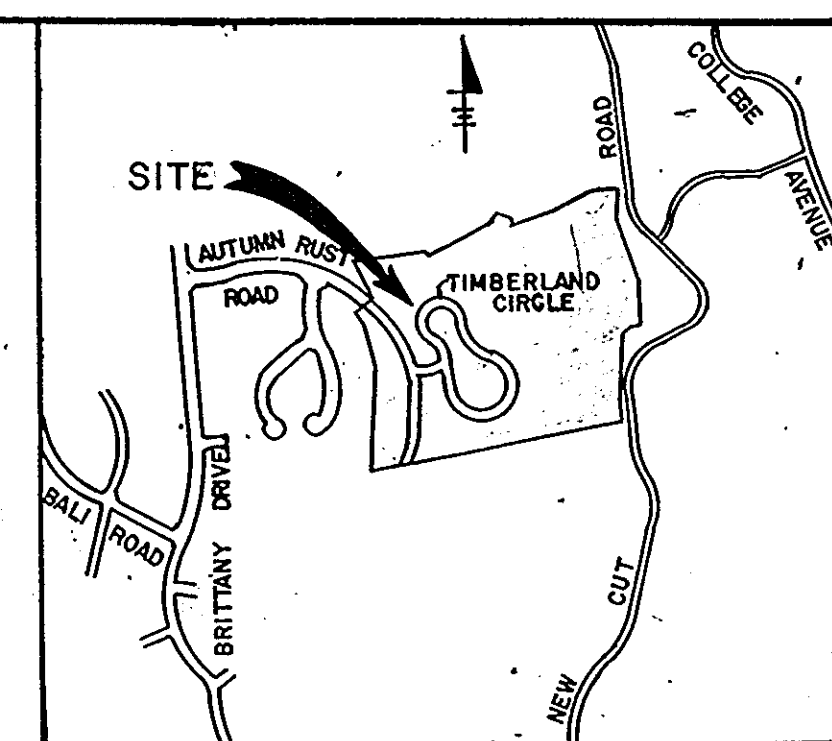


COORDINATE TABLE					
NO.	NORTH	EAST	NO.	NORTH	EAST
1	519221.37	855306.50	16	519799.49	857105.48
2	519309.66	855825.33	17	519619.16	857130.03
3	519296.92	855853.42	18	519164.14	857297.91
4	519363.12	855995.50	19	518907.22	857305.77
5	519515.63	856259.70	20	518892.83	857251.64
6	519564.72	856303.73	21	518847.11	857216.60
7	519546.16	856373.93	22	518504.00	857071.00
8	519478.63	856389.16	23	518264.22	857106.13
9	519472.10	856415.39	24	517984.09	855716.63
10	519492.06	856436.25	25	518179.78	855476.72
11	519565.45	856636.05	26	518705.00	85548.50
12	519336.73	856735.18	27	518320.00	855471.50
13	519686.63	856800.88	28	518957.85	855445.56
14	519724.08	856870.67	29	518980.24	855458.78
15	519753.35	857033.05	30	518910.81	857296.60



NO.	DESCRIPTION	AREA	PERCENT	REMARKS
1	24x50	1,200	100	
2	24x50	1,200	100	
3	24x50	1,200	100	
4	24x50	1,200	100	
5	24x50	1,200	100	
6	24x50	1,200	100	
7	24x50	1,200	100	
8	24x50	1,200	100	
9	24x50	1,200	100	
10	24x50	1,200	100	
11	24x50	1,200	100	
12	24x50	1,200	100	
13	24x50	1,200	100	
14	24x50	1,200	100	
15	24x50	1,200	100	
16	24x50	1,200	100	
17	24x50	1,200	100	
18	24x50	1,200	100	
19	24x50	1,200	100	
20	24x50	1,200	100	
21	24x50	1,200	100	
22	24x50	1,200	100	
23	24x50	1,200	100	
24	24x50	1,200	100	
25	24x50	1,200	100	
26	24x50	1,200	100	
27	24x50	1,200	100	
28	24x50	1,200	100	
29	24x50	1,200	100	
30	24x50	1,200	100	
31	24x50	1,200	100	
32	24x50	1,200	100	
33	24x50	1,200	100	
34	24x50	1,200	100	
35	24x50	1,200	100	
36	24x50	1,200	100	
37	24x50	1,200	100	
38	24x50	1,200	100	
39	24x50	1,200	100	
40	24x50	1,200	100	
41	24x50	1,200	100	
42	24x50	1,200	100	
43	24x50	1,200	100	
44	24x50	1,200	100	
45	24x50	1,200	100	
46	24x50	1,200	100	
47	24x50	1,200	100	
48	24x50	1,200	100	
49	24x50	1,200	100	
50	24x50	1,200	100	
51	24x50	1,200	100	
52	24x50	1,200	100	
53	24x50	1,200	100	
54	24x50	1,200	100	
55	24x50	1,200	100	
56	24x50	1,200	100	
57	24x50	1,200	100	
58	24x50	1,200	100	
59	24x50	1,200	100	
60	24x50	1,200	100	
61	24x50	1,200	100	
62	24x50	1,200	100	
63	24x50	1,200	100	
64	24x50	1,200	100	
65	24x50	1,200	100	
66	24x50	1,200	100	
67	24x50	1,200	100	
68	24x50	1,200	100	
69	24x50	1,200	100	
70	24x50	1,200	100	
71	24x50	1,200	100	
72	24x50	1,200	100	
73	24x50	1,200	100	
74	24x50	1,200	100	
75	24x50	1,200	100	
76	24x50	1,200	100	
77	24x50	1,200	100	
78	24x50	1,200	100	
79	24x50	1,200	100	
80	24x50	1,200	100	
81	24x50	1,200	100	
82	24x50	1,200	100	
83	24x50	1,200	100	
84	24x50	1,200	100	
85	24x50	1,200	100	
86	24x50	1,200	100	
87	24x50	1,200	100	
88	24x50	1,200	100	
89	24x50	1,200	100	
90	24x50	1,200	100	
91	24x50	1,200	100	
92	24x50	1,200	100	
93	24x50	1,200	100	
94	24x50	1,200	100	
95	24x50	1,200	100	
96	24x50	1,200	100	
97	24x50	1,200	100	
98	24x50	1,200	100	
99	24x50	1,200	100	
100	24x50	1,200	100	

FISHER, COLLINS AND CARTER, INC.  
CONSULTING ENGINEERS AND LAND SURVEYORS  
8388 COURT AVENUE  
ELLICOTT CITY, MARYLAND 21043

OWNER AND DEVELOPER  
TAYLOR LAND SERVICE CO. INC.  
C/O HOWARD COUNTY LAND SERVICES  
8307 MAIN STREET  
ELLICOTT CITY, MARYLAND 21043

GUSTAV WILLIAM EKLOF, JR.  
189/486  
ZONED R-ED

TENTATIVELY APPROVED  
ON 11/10/88  
DATE  
OFFICE of PLANNING AND  
ZONING of  
HOWARD COUNTY  
PLANNING DIRECTOR  
12/21/88  
DATE



- GENERAL NOTES**
- SUBJECT PROPERTY IS ZONED R-ED PER 8-3-85 COMPREHENSIVE ZONING PLAN.
  - PROPERTY IS LOCATED ON TAX MAP 25 P/O PARCEL 65.
  - PUBLIC WATER AND PUBLICSEWER WILL BE USED WITHIN THIS DEVELOPMENT.
  - GROSS AREA OF PROPERTY 53.81 AC.
  - NO. OF DWELLING UNITS ALLOWED PER GROSS ACRE = 2x53.81 = 107.62
  - NO. OF DWELLING UNITS PROPOSED ATTACHED UNITS=107.
  - NO. OF PARKING SPACES REQUIRED FOR ATTACHED STRUCTURES= 214
  - NO. OF PARKING SPACES PROVIDED FOR ATTACHED STRUCTURES= 262
  - OPEN SPACE REQUIRED= 20% x 54 AC = 10.8 AC
  - OPEN SPACE PROVIDED= 415 AC
  - SUBJECT PROPERTY IS 100% WOODED
  - TOTAL AREA OF BUILDABLE LOTS 7.3 AC
  - TOTAL AREA OF ROAD R/W 3.6 AC
  - 14 DENOTES 100 YEAR FLOOD ELEVATION
  15. LOT COVERAGE- STRUCTURES 36 PERCENT
  16. THE EXISTING STORMWATER MANAGEMENT FACILITY AT AUTUMN MANOR SECTION I AREA WILL BE USED FOR THIS DEVELOPMENT.
  - SEE PLANNING BOARD CASE NO. 204, 5-86-88
  - DEED REFERENCE 362/466

PRELIMINARY PLAN  
**THE TOWNHOMES OF TIMBERLAND**  
LOTS 1-110  
SECOND ELECTION DISTRICT  
HOWARD COUNTY, MARYLAND  
TAX MAP 25 P/O PARCEL 65  
SCALE: 1"=100'  
SHEET 1 OF 1  
DATE: MARCH 23, 1987