

VICINITY MAP

SCALE: 1"=2000'

CURVE DATA
 RC. Sta. 1+90 to PT. Sta. 2+74
 R = 150.00'
 L = 61.00'
 Δ = 23°18'00"
 Tan. = 60.58'
 Chd. = 30.93'

INDEX

Sheet	Description
1	Grading, Sediment Control, Stormwater Management, Sewer, Water, Roads, Storm Drains.
2	Soil Map, Road Section, Road Profile, Drainage Area Map.

LEGEND

Existing Contours	---104---
Prop. Contours	---154---
Silt Fence	S
Prop. Water (Public)	---
Prop. Sewer (Public)	---
Prop. Storm Drain	---
Street Trees	---
Stabilized Construction Entrance	---

TENTATIVELY APPROVED ON JUNE 8, 1987
 DATE
 OFFICE OF PLANNING AND ZONING OF
 HOWARD COUNTY
[Signature] 8.3.87
 PLANNING DIRECTOR DATE ADB

PLAN SUMMARY
 TOTAL AREA OF PLAN - 5.67 AC.
 TOTAL NO. LOTS - 13
 TOTAL AREA OF LOTS - 459 AC.
 MINIMUM LOT AREA - 16,000 SQ. FEET
 TOTAL AREA OF R/W'S - 0.88 AC.
 TOTAL OPEN SPACE - 2,107.5 SQ. FEET
 REQUIRED OPEN SPACE - (247,821 / 10,000) = 19,822 SQ. FEET
 EXISTING ZONING - R-12
 SETBACK REQUIREMENTS
 FRONT - 30' MIN.
 REAR - 30' MIN.
 SIDE - 7 1/2' MIN.

S-86-60 P-87-65

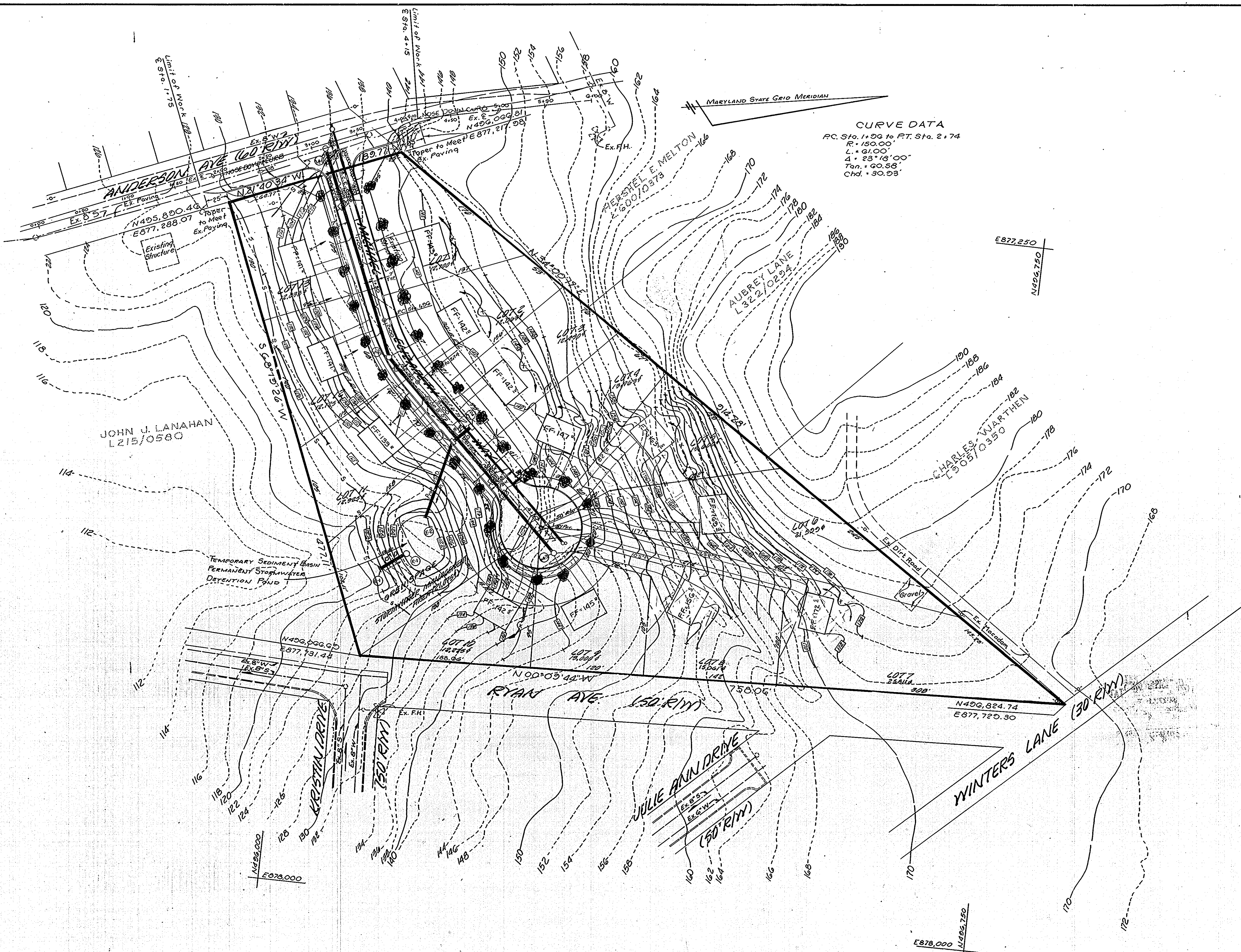
PRELIMINARY PLAN
LINDSAY'S CHOICE

TAX MAP 38 PARCEL 642
 1st District Howard County

Scale: 1"=50' February 1987

Sheet 1 of 1

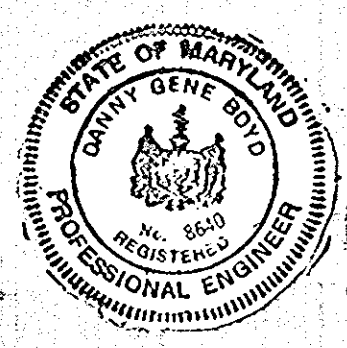
P-87-55



DEVELOPER:

HANOVER DEVELOPMENT CO.
 5136 WESTLAND BLVD.
 BALTIMORE, MD. 21227

A.L. DOWGIALLO & ASSOCIATES INC.
 836 RITCHIE HIGHWAY
 SEVERNA PARK, MD. 21146



[Signature]
 DANNY G. BOYD PE #8640 Date