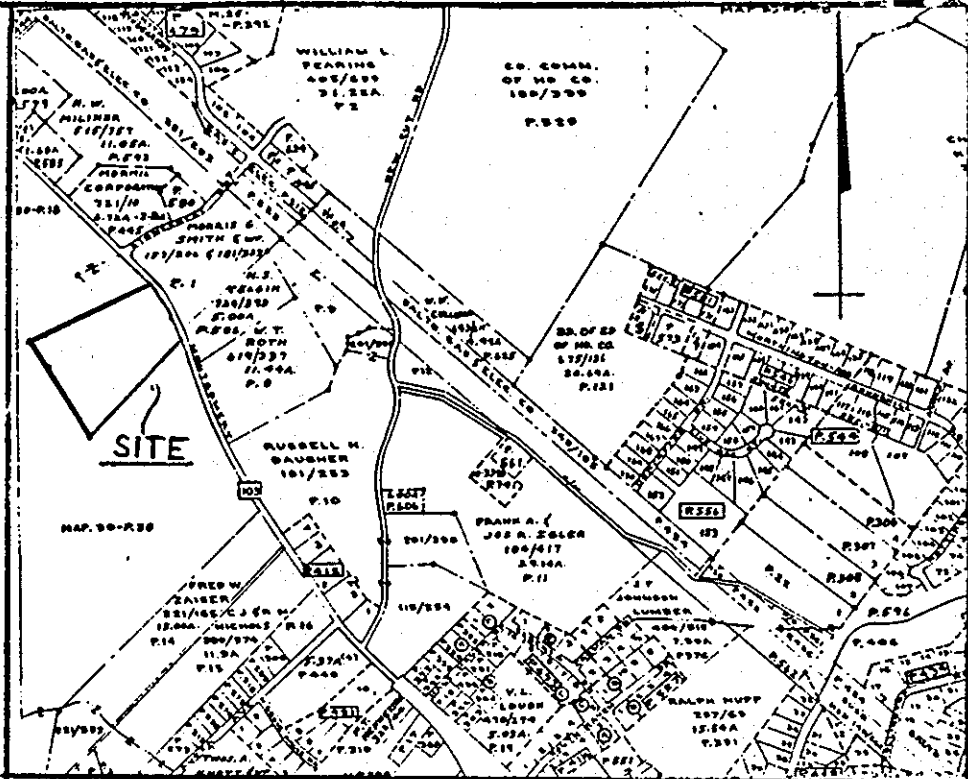


COORDINATES  
 NORTH EAST  
 855,264.00  
 855,209.92  
 854,908.37  
 855,111.82



VICINITY MAP

GENERAL NOTES

Existing Zoning: R-20  
 Gross Area of Tract: 11.4 ac.  
 Area of Proposed Lots: 10.39 ac.  
 Area of Proposed R.O.W.: 1.01 ac.  
 Number of lots proposed: 21/19 Buildable  
 Open Space required: 54,134.75 sq. ft. - 1.2 ac.  
 Area of Flood plain & 25% slopes: 74,487.60 sq. ft. - 1.71 ac.  
 The water & sewer systems proposed are to be Public Facilities

OPEN SPACE TABULATION

Lot size (sq ft)	No. of lots	Area of lots (sq ft)	Mandatory open space provisions	Area of open space (sq ft)
20,000	1	13,234.6	SUB. TO REGS.	0
18,000	1	1906.4	10%	1706.4
16,000	1	8143.5	20%	1628.3
14,000	1	11473.5	30%	3542.05

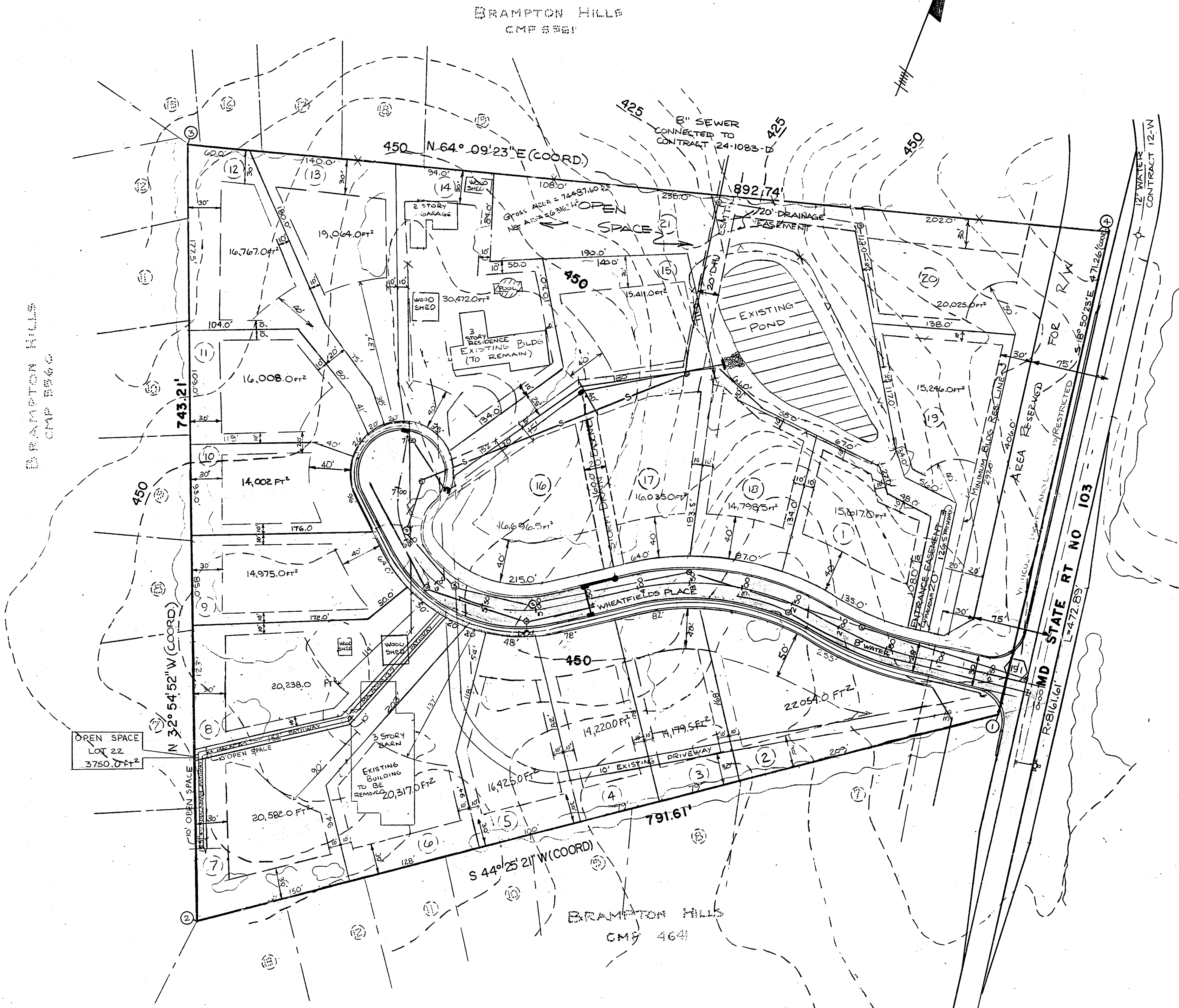
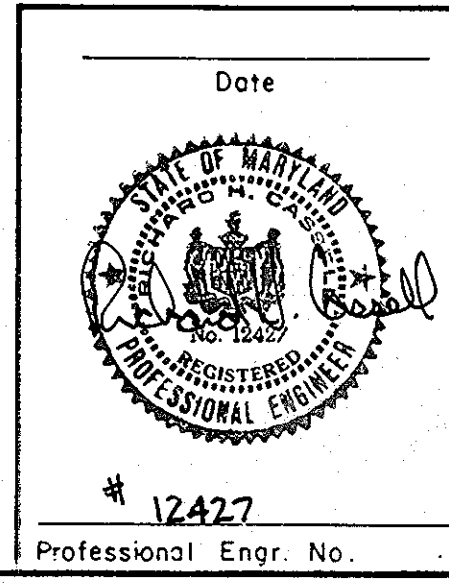
Open Space Required = 54,134.75 sq. ft.  
 Required Open Space = 1.2 ACRES  
 Proposed Open Space = 1.79 ACRES

22 PROPOSED LOTS → 20 LOTS ARE RESIDENTIAL  
 2 OPEN SPACE LOTS

○ - AVERAGE DAILY TRAFFIC

TEMPORARILY APPROVED ON April 13, 1987  
 OFFICE OF PLANNING AND ZONING OF HOWARD COUNTY  
*Van P. Adams* 6-9-87  
 PLANNING DIRECTOR EXEC. R.D.B.

Date	No.	Revision Description
OWNER / DEVELOPER HERITAGE HOMES IN OAKWOOD LIMITED PARTNERSHIP 8950 RT 108, SUITE 210 GORMAN PLAZA COLUMBIA, MD 21045		
ATLANTIC ENGINEERING, INC. CONSULTING ENGINEERS - PLANNERS 196 PENNSYLVANIA AVE. WESTMINSTER MD (301) 876-1288		
AREA MD RT 103 NEAR BRAMPTON PKWY 2ND ELECTION DIST., HOWARD CO., MD TAX MAP 31, PARCEL 563		
TITLE PRELIMINARY PLAN MANORS OF OAKWOOD		
Des By R.CASELL	Scale 1" = 50'	Proj. No. 243-001-947
Drn By AEC	Date 7/11/86	Drawing No. 1 OF 1
Chk By RHC	Approved	



BRAMPTON HILLS  
 CMP 5566

BRAMPTON HILLS  
 CMP 5561

BRAMPTON HILLS  
 CMP 464